

BAND-IT[®]

Engineered Fastening Solutions

CELEBRATING 80 YEARS OF EXCELLENCE

HOSE CLAMPING

IDENTIFICATION

CABLE MANAGEMENT

INFRASTRUCTURE

Product Solutions Guide
www.band-it-idex.com

BAND-IT® IDEX, Inc. is an innovative clamping solutions company providing service and value second to none!



Founded in Denver, Colorado in 1937, BAND-IT® is acknowledged as the world's leader in quality engineered fastening solutions. A unit of IDEX corporation, BAND-IT® has an international network of representatives and distributors, with manufacturing and distribution facilities serving users worldwide.



Certificates

As demonstration of our ongoing commitment to excellence, quality and environmental management, BAND-IT is proud to display the following certificates of compliance to the prestigious International Standards:



- ISO 9001
- ISO 14001
- TS16949

Since becoming ISO/TS certified, BAND-IT® continues to seek new and innovative ways to manufacture products through our continuous efforts of upgrading equipment, employee training and internal quality assurance in our quest to deliver the best products within the market place to our customers.

Patents:

- 6,014,792 - Ultra-Lok® band clamp including separately attached buckle
- 6,260,704 B - Band tote assembly
- 6,481,467 - Pneumatic Automatic Air Tool S350
- 7,650,680 - Improved dimple locking method for bundling objects
- 7,484,274 - Free end band and seal
- 8,146,212 - Free end band

Trademarks:

BAND-IT®, BAND-IT Jr.®, Junior®, BAND-FAST®, COLOR-IT®, Tie-Lok®, Tie-Lok Tool®, and Ultra-Lok® are registered trademarks owned by BAND-IT IDEX, Inc., a unit of IDEX Corporation.

World Headquarters

North American Operations
BAND-IT IDEX, Inc.
Western Hemisphere Sales and Marketing
Tel: (303) 320-4555
Toll Free : 800-525-0758
Fax: (303) 333-6549
Email:
info.BAND-IT@idexcorp.com
Website:
www.band-it-idex.com

European Operations

BAND-IT Company Limited
Tel: (44) 1246-477333
UK Sales Tel:
(44) 1246-479479
European Sales Tel:
(44) 1246-479480
Fax (44) 1246-476324
Sales Email:
BAND-ITUKSALES.
BAND-IT@idexcorp.com
Email:
EUROPEinfo.BAND-IT@
idexcorp.com
Website:
www.band-it-idex.eu

Singapore Sales Office

BAND-IT Asia Pacific Pte. LTD.
Tel: (65) 6684-7312 /
(65) 6684-7317
Fax: (65) 6795-8070
Email:
PACIFICRIMinfo.BAND-IT@
idexcorp.com

Latin American Sales Office

Tel: (52) 55 5825-8502
Fax: (52) 55 5825-8502
Email:
LAinfo.BAND-IT@idexcorp.
com
Japan Sales Office
Tel: (81) 90 2917 8463
Email:
BID.Japaninfo.BAND-IT@
idexcorp.com

China Suzhou Operations

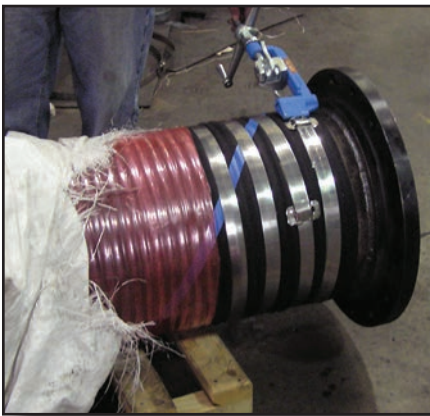
Tel: (86) 512 6283-3000
Fax: (86) 512 6283-3928
Email:
BIDChina.BAND-IT@
idexcorp.com
Website
www.band-it.com.cn

TABLE OF CONTENTS

Band & Buckle	3
• 201 SS Band, Giant Band, Scru-Lok Buckles.....	5
• VALU-STRAP™, VALU-STRAP™ Plus, Valuband.....	6
• Valu-clip, Galvanized Band & Buckle.....	7
• 304 SS Band, 316 SS Band, 316 SS Buckle & Clips.....	8
• 317L Band, Alloy 400 Band, & Buckle, All Purpose Band.....	9
• Band & Buckle Kits.....	10
• BAND-FAST® with COLOR-IT®, BAND-FAST® Open End Band.....	11
• BAND-FAST® Pre Cut Band.....	12
• Roll Band w/COLOR-IT®.....	13
• Ultra-Lok® Banding System.....	14
Preformed Clamps	16
• Ultra-Lok®.....	17
• Junior® Smooth.....	18
• Center Punch.....	20
Cable Ties	22
• Tie-Lok®.....	24
• Multi-Lok, Ultra-Lok®.....	25
• Ball-Lok.....	26
• Ball-Lok™.....	27
• BAND-IT® Ties.....	28
SIGNFIX	29
• Extrusions and Cantilever Arms.....	29
Identification	30
• Identification.....	31
Mounting	32
• Mounting Hardware.....	32
• Mounting Brackets.....	33
Adjustable Clamping Systems	34
• Worm Gear.....	34
• Scru-Band & Scru-Seal.....	35
Tools	36
• Hand Tools.....	37
• Power Tools.....	38
Tools	36
Product Matrix	42
Certifications & Definitions	44
Metals Data	46



Banding Applications



General Use

BAND-IT Band

- 201 SS, bright annealed finish with a combination of high strength and quality appearance
- Offers good resistance to oxidation and many moderate corrosive agents
- EASY SCALE - Patented imprint on the band to quickly determine band length
- Durable plastic tote dispensers available

Giant Band

- Our widest and thickest band
- Available in 201 SS bright annealed
- Application Tools: C00369 (for 3/4" band only), and G40269

VALU-STRAP™, VALU-STRAP Plus™, and Valuband

- Economical band suitable for light duty applications
- Thickness: 0.015", 0.020", 0.025"
- Application Tools: C00169, C00369, C07569, C08569, C40099 and J02069

Galvanized Carbon Steel Band

- Utilized for low cost and non corrosive applications
- Good strength
- Application Tools: C00169, C00369, C07569, C08569, and C40099

Corrosion Resistant

304 Stainless Steel Band

- Band suitable for light duty applications
- Good corrosion resistance in fresh water and industrial atmospheres
- Application Tools: C00169, C00369, C07569, C08569, and C40099

316 Coated & Uncoated Stainless Steel Band

- Superior corrosion resistance in typical atmospheres and fresh water
- Coated band can be used in salt spray applications. Available with a non-toxic polymer coating (PPA 571) that produces low smoke and is halogen free
- Application Tools for coated: C07569, C08569, and C40099
- Application Tools for uncoated: C00169, C00369, C07569, C08569, and C40099

317L Stainless Steel Band

- Superior corrosion resistance in industrial and marine atmospheres, salt water, and mild chemicals
- Application Tools: C00169, C00369, and C40099

Alloy 400 Band

- Superior corrosion resistance in marine, salt water, and harsh chemical environments
- Application Tools: C00169, C00369, C07569, C08569 and C40099

Special Purpose

All Purpose Band

- Evenly spaced holes allow fastening with screw or nut and bolt
- Available with a non-toxic polymer coating (PPA 571) that produces low smoke and is halogen free

COLOR-IT®

- 12 stocked colors
- Speciality colors available upon request (*minimum quantity applies*)

Ultra-Lok® Banding System

- Designed for quick installation, highest clamping force and gap-free inside diameter.
- 201 1/4 hard SS band provides greater material strength allowing tighter clamps and can be double wrapped for additional strength

General Use Band & Buckle

Type 201 Stainless Steel

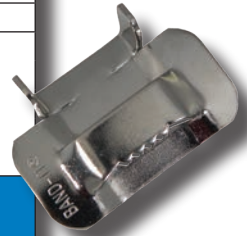
This is the standard choice of BAND-IT products, offering very high strength, clean appearance and good resistance to oxidation and weathering. This non-magnetic material is the choice for municipal and industrial markets.

BAND-IT® Band 201 Stainless Steel

Part No.	Material	Width		Thickness		Average Breaking Strength (lbs)	Package Quantity	Weight		Application Tools
		in	mm	in	mm			lbs	kg	
201 Stainless Steel BAND-IT® Band										
C20299	201 SS	1/4	6.4	0.020	0.51	500	100/Roll	1.7	0.7	C00169 C00369 C07569 C08569 C40099 J02069*
C20399	201 SS	3/8	9.6	0.025	0.64	900	100/Roll	3.2	1.5	
C203Y9	201 SS	3/8	9.6	0.025	0.64	900	Yellow Tote 100/Roll	3.6	1.6	
C20499	201 SS	1/2	12.7	0.030	0.76	1500	100/Roll	5.1	2.3	
C204B9	201 SS	1/2	12.7	0.030	0.76	1500	Blue Tote 100/Roll	5.5	2.5	
C20599	201 SS	5/8	15.8	0.030	0.76	1875	100/Roll	6.4	2.9	
C205G9	201 SS	5/8	15.8	0.030	0.76	1875	Green Tote 100/Roll	6.8	3.1	
C20699	201 SS	3/4	19.1	0.030	0.76	2250	100/Roll	7.7	3.5	
C206R9	201 SS	3/4	19.1	0.030	0.76	2250	Red Tote 100/Roll	8.2	3.7	
BAND-IT® Buckle Ear-Lokt Style										
C25299**	201 SS	1/4	6.4				100/Box	0.3	0.1	
C25399	201 SS	3/8	9.6				100/Box	0.8	0.4	
C25499	201 SS	1/2	12.7				100/Box	2.1	1.0	
C25599	201 SS	5/8	15.8				100/Box	2.4	1.1	
C25699	201 SS	3/4	19.1				100/Box	3.7	1.7	

*The J02069 can be used with 3/8" maximum width product.

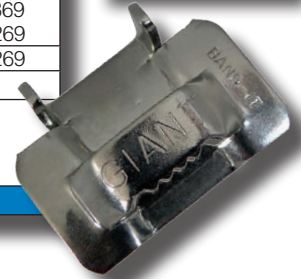
** Clip Style



Giant Band 201 Stainless Steel

Part No.	Material	Width		Thickness		Average Breaking Strength (lbs)	Package Quantity	Weight		Finish	Application Tools
		in	mm	in	mm			lbs	kg		
Giant Band											
G43099*	201 SS	3/4	19.1	0.044	1.10	3300	100/Roll	11.6	5.4		C00369 G40269
G43199	201 SS	1	25.4	0.044	1.10	4400	100/Roll	13.7	6.4		G40269
G43299	201 SS	1-1/4	31.8	0.044	1.10	5500	100/Roll	17.2	8.0		
G46099	201 SS	3/4	19.1	0.044	1.10	3300	100/Roll	11.6	5.4	Matte	C00369 G40269
G46299	201 SS	1-1/4	31.8	0.044	1.10	5500	100/Roll	17.2	8.0	Matte	G40269
Giant Buckle Ear-Lokt Style											
G44099	201 SS	3/4	19.1				25/Box	1.8	0.8		
G44199	201 SS	1	24.4				25/Box	2.4	1.1		
G44299	201 SS	1-1/4	31.8				25/Box	3.2	1.4		

*C00369 tool to be used for 3/4"



Scru-Lokt Buckle Stainless Steel

Part No.	Material	Width		Package Quantity	Weight		Application Tools
		in	mm		lbs	kg	
Stainless Steel Scru-Lokt Buckle							
C72099	301 SS 1/4 Hard	1/4	6.4	50/Box	0.3	0.1	Hex Key
C72299	301 SS 1/4 Hard	3/8	9.6	50/Box	0.5	0.2	
C72499	301 SS 1/4 Hard	1/2	12.7	25/Box	0.5	0.2	
C72599	201 SS	5/8	15.8	25/Box	0.8	0.4	
C72699	201 SS	3/4	19.1	25/Box	0.9	0.4	



BAND-IT reserves the right to substitute material with equal or better corrosion resistance and/or mechanical specifications.

General Use Band & Buckle

Type 200-300 Stainless Steel

Also known as Value Series Stainless steel – Typically non-magnetic, this economy steel is suitable for light duty applications when the benefits of stainless steel are required.

VALU-STRAP™ Band Stainless Steel

Part No.	Material	Width		Thickness		Average Breaking Strength (lbs)	Package Quantity	Weight		Application Tools
		in	mm	in	mm			lbs	kg	
VALU-STRAP™										
C13199	200/300 SS	3/16	4.8	0.015	0.38	280	100'/Roll	1.2	0.5	C00169 C00369 C07569 C08569 C40099 J02069*
C13399	200/300 SS	3/8	9.6	0.015	0.38	450	100'/Roll	2.2	1.0	
C13499	200/300 SS	1/2	12.7	0.015	0.38	600	100'/Roll	2.9	1.3	
C13599	200/300 SS	5/8	15.8	0.015	0.38	750	100'/Roll	3.6	1.7	
C13699	200/300 SS	3/4	19.1	0.015	0.38	900	100'/Roll	4.4	2.0	
C12799	200/300 SS	3/8	9.6	0.015	0.38	450	200'/Roll	4.4	2.0	
C12899	200/300 SS	1/2	12.7	0.015	0.38	600	200'/Roll	5.8	2.6	
C12999	200/300 SS	5/8	15.8	0.015	0.38	750	200'/Roll	7.3	3.2	
C13099	200/300 SS	3/4	19.1	0.015	0.38	900	200'/Roll	8.8	3.9	

These products are available in 300' rolls & Full Mill Coil.

*The J02069 can be used with 3/8" maximum width product.



VALU-STRAP™ Plus Band Stainless Steel

Part No.	Material	Width		Thickness		Average Breaking Strength (lbs)	Package Quantity	Weight		Application Tools
		in	mm	in	mm			lbs	kg	
VALU-STRAP™ Plus										
C19199	200/300 SS	3/8	9.6	0.020	0.51	600	100'/Roll	2.9	1.3	C00169 C00369 C07569 C08569 C40099 J02069*
C18189	200/300 SS	1/2	12.7	0.020	0.51	850	100'/Roll	3.8	1.7	
C17199	200/300 SS	5/8	15.8	0.020	0.51	1000	100'/Roll	5.6	2.6	
C16189	200/300 SS	3/4	19.1	0.020	0.51	1275	100'/Roll	5.7	2.5	
C19399	200/300 SS	3/8	9.6	0.020	0.51	600	200'/Roll	5.8	2.6	
C18389	200/300 SS	1/2	12.7	0.020	0.51	850	200'/Roll	7.6	3.4	
C17399	200/300 SS	5/8	15.8	0.020	0.51	1000	200'/Roll	11.2	5.2	
C16389	200/300 SS	3/4	19.1	0.020	0.51	1275	200'/Roll	11.4	5.0	

*The J02069 can be used with 3/8" maximum width product).



Valuband Stainless Steel

Part No.	Material	Width		Thickness		Average Breaking Strength (lbs)	Package Quantity	Weight		Application Tools
		in	mm	in	mm			lbs	kg	
Valuband										
C14499	200/300 SS	1/2	12.7	0.025	0.64	1000	100'/Roll	4.5	2.0	C00169 C00369 C07569 C08569 C40099
C14599	200/300 SS	5/8	15.8	0.025	0.64	1250	100'/Roll	5.6	2.6	
C14699	200/300 SS	3/4	19.1	0.025	0.64	1590	100'/Roll	6.7	3.0	
C14899	200/300 SS	1/2	12.7	0.025	0.64	1000	200'/Roll	9.0	4.0	
C14999	200/300 SS	5/8	15.8	0.025	0.64	1250	200'/Roll	11.2	5.2	
C15099	200/300 SS	3/4	19.1	0.025	0.64	1590	200'/Roll	13.4	6.0	

These products are available in 300' rolls & Full Mill Coil.

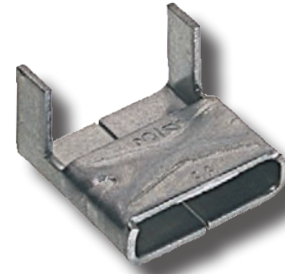


BAND-IT reserves the right to substitute material with equal or better corrosion resistance and/or mechanical specifications.

General Use Band & Buckle

Stainless Steel Valucлип

Part No.	Material	Width		Package Quantity	Weight	
		in	mm		lbs	kg
Valucлип						
C15199	200/300 SS	3/16	4.8	100/Box	0.2	0.1
C15399	200/300 SS	3/8	9.6	100/Box	0.6	0.3
C15499	200/300 SS	1/2	12.7	100/Box	1.1	0.5
C15599	200/300 SS	5/8	15.8	100/Box	1.2	0.5
C15699	200/300 SS	3/4	19.1	100/Box	2.1	0.9



Stainless Steel Clip

Part No.	Material	Width		Package Quantity	Weight	
		in	mm		lbs	kg
Stainless Steel Clip						
C25299	200/300 SS	1/4	6.4	100/Box	0.3	0.1
L15399	200/300 SS	3/8	9.6	100/Box	0.9	0.4
L15499	200/300 SS	1/2	12.7	100/Box	1.5	0.7
L15599	200/300 SS	5/8	15.8	100/Box	1.8	0.8
L15699	200/300 SS	3/4	19.1	100/Box	2.6	1.2
L15789	304 SS	5/8	15.8	1000/Box	9.7	4.4



Galvanized Carbon Steel "GCS"

Carbon steel which has been electro galvanized. This is an economical choice offering medium strength.

Galvanized Carbon Steel Band

Part No.	Material	Width		Thickness		Average Breaking Strength (lbs)	Package Quantity	Weight		Application Tools
		in	mm	in	mm			lbs	kg	
Galvanized Carbon Steel Band										
C30399	GCS	3/8	9.6	0.025	0.63	700	100'/Roll	3.3	1.6	C00169 C00369 C07569 C08569 C40099 J02069*
C30499	GCS	1/2	12.7	0.025	0.63	1125	100'/Roll	5.1	2.4	
C30599	GCS	5/8	15.8	0.025	0.63	1405	100'/Roll	6.4	3.0	
C30699	GCS	3/4	19.1	0.025	0.63	1690	100'/Roll	7.7	3.6	



These products are available in Full Mill Coil.

*The J02069 can be used with 3/8" maximum width product.

Galvanized Carbon Steel Buckle

Part No.	Material	Width		Package Quantity	Weight	
		in	mm		lbs	kg
Galvanized Carbon Steel Ear-Lokt Buckle						
C35399	GCS	3/8	9.6	100/Box	0.8	0.4
C35499	GCS	1/2	12.7	100/Box	2.1	1.0
C35599	GCS	5/8	15.8	100/Box	2.4	1.1
C35699	GCS	3/4	19.1	100/Box	3.7	1.7



BAND-IT reserves the right to substitute material with equal or better corrosion resistance and/or mechanical specifications.

Corrosion Resistant Band & Buckle

Type 304 Stainless Steel Band

This alloy will provide a very good corrosion resistance in fresh water and industrial atmospheres. Often selected for light duty applications in food processing, chemical, power transmission and cable management.

Part No.	Material	Width		Thickness		Average Breaking Strength (lbs)	Package Quantity	Weight		Application Tools
		in	mm	in	mm			lbs	kg	
304 Stainless Steel Band										
C90399	304 SS	3/8	9.6	0.015	0.38	450	200'/Roll	4.4	2.0	C00169 C00369 C07569 C08569 C40099 J02069*
C91399	304 SS	3/8	9.6	0.020	0.51	600	200'/Roll	5.9	2.7	
C90499	304 SS	1/2	12.7	0.015	0.38	600	200'/Roll	5.8	2.6	
C91499	304 SS	1/2	12.7	0.020	0.51	850	200'/Roll	7.6	3.4	
C90599	304 SS	5/8	15.8	0.015	0.38	750	200'/Roll	7.3	3.2	
C91599	304 SS	5/8	15.8	0.020	0.51	1000	200'/Roll	9.5	4.3	
C90699	304 SS	3/4	19.1	0.015	0.38	900	200'/Roll	8.8	3.9	
C91699	304 SS	3/4	19.1	0.020	0.51	1275	200'/Roll	11.3	5.0	

*The J02069 can be used with 3/8" maximum width product.



Type 316 Stainless Steel Band (coated & uncoated)

This alloy provides superior corrosion resistance in fresh water and typical atmospheres and is non-magnetic. Ideal for food process, chemical / agricultural hose assemblies, marine splash zones and some acidic environments.

Part No.	Material	Width		Thickness		Average Breaking Strength (lbs)	Package Quantity	Weight		Application Tools
		in	mm	in	mm			lbs	kg	
316 Stainless Steel Band Coated										
AE4329	316 SS	1/4	6.4	0.048**	1.22**	335	82.5'/Roll	2.0	0.9	C07569 C08569 C40069
AE4339	316 SS	3/8	9.6	0.048**	1.22**	505	82.5'/Roll	2.6	1.2	
AE4349	316 SS	1/2	12.7	0.048**	1.22**	670	82.5'/Roll	3.5	1.6	
AE4359	316 SS	5/8	15.8	0.048**	1.22**	840	82.5'/Roll	4.4	2.0	
AE4369	316 SS	3/4	19.1	0.048**	1.22**	1000	82.5'/Roll	5.3	2.4	
**Material thickness includes PPA 571 coating - Base material thickness is 0.015*										
316 Stainless Steel Band Uncoated										
C40299	316 SS	1/4	6.4	0.020	0.51	400	100'/Roll	2.0	0.9	C00169 C00369 C07569 C08569 C40099 J02069*
C40399	316 SS	3/8	9.6	0.025	0.64	750	100'/Roll	3.5	1.6	
C403Y9	316 SS	3/8	9.6	0.025	0.64	750	Yellow Tote 100'/Roll	3.7	1.7	
C40499	316 SS	1/2	12.7	0.030	0.76	1200	100'/Roll	4.9	2.2	
C404B9	316 SS	1/2	12.7	0.030	0.76	1200	Blue Tote 100'/Roll	5.6	2.6	
C40599	316 SS	5/8	15.8	0.030	0.76	1500	100'/Roll	6.2	2.8	
C405G9	316 SS	5/8	15.8	0.030	0.76	1500	Green Tote 100'/Roll	6.9	3.1	
C40699	316 SS	3/4	19.1	0.030	0.76	1800	100'/Roll	7.5	3.4	
C406R9	316 SS	3/4	19.1	0.030	0.76	1800	Red Tote 100'/Roll	8.2	3.7	
C44499	316 SS	1/2	12.7	0.015	0.38	600	200'/Roll	5.7	2.6	
C444B9	316 SS	1/2	12.7	0.015	0.38	600	Blue Tote 200'/Roll	5.8	2.7	
C44599	316 SS	5/8	15.8	0.015	0.38	750	200'/Roll	6.7	3.0	
C445G9	316 SS	5/8	15.8	0.015	0.38	750	Green Tote 200'/Roll	6.9	3.1	
C44699	316 SS	3/4	19.1	0.015	0.38	900	200'/Roll	8.3	3.8	
C446R9	316 SS	3/4	19.1	0.015	0.38	900	Red Tote 200'/Roll	8.4	3.8	

*The J02069 can be used with 3/8" maximum width product.



316 Stainless Steel Ear-Lokt Buckle

Part No.	Material	Width		Package Quantity	Weight	
		in	mm		lbs	kg
316 Stainless Steel Ear-Lokt Buckle						
C45299**	316 SS	1/4	6.4	100/Box	0.3	0.1
C45399	316 SS	3/8	9.6	100/Box	0.8	0.4
C45499	316 SS	1/2	12.7	100/Box	2.1	1.0
C45599	316 SS	3/8	15.8	100/Box	2.4	1.1
C45699	316 SS	3/4	19.1	100/Box	3.7	1.7

** Clip Style

316 Stainless Steel Clip

Part No.	Material	Width		Package Quantity	Weight	
		in	mm		lbs	kg
316 Stainless Steel Clip						
AE4529	316 SS	1/4	6.4	100/Box	0.3	0.1
AE4539	316 SS	3/8	9.6	100/Box	0.6	0.3
AE4549	316 SS	1/2	12.7	100/Box	1.0	0.4
AE4559	316 SS	5/8	15.8	100/Box	1.1	0.5
AE4569	316 SS	3/4	19.1	100/Box	1.3	0.6

Corrosion Resistant Band & Buckle

Type 317L Stainless Steel Band

This alloy has superior corrosion resistance and is typically used to wrap bleach drums in the pulp and paper mills. The "L" indicates a low carbon content, which significantly improves its welding characteristics.

Part No.	Material	Width		Thickness		Average Breaking Strength (lbs)	Package Quantity	Weight		Application Tools
		in	mm	in	mm			lbs	kg	
317L Band										
C41399	317L 1/4 Hard SS	3/8	9.6	0.030	0.76	1290	300'/Roll	11.9	5.3	C00169 C00369 C40099
C42499	317L 1/4 Hard SS	1/2	12.7	0.020	0.51	1160	300'/Roll	10.2	4.6	
C41499	317L 1/4 Hard SS	1/2	12.7	0.030	0.76	1725	300'/Roll	15.9	7.2	
C41599	317L 1/4 Hard SS	5/8	15.8	0.030	0.76	2150	300'/Roll	19.9	9.0	
C41699	317L 1/4 Hard SS	3/4	19.1	0.030	0.76	2580	300'/Roll	23.9	10.8	

These products available in Full Mill Coil.

Alloy 400 Band

This material of choice for submerged marine and harsh chemical applications.

Part No.	Material	Width		Thickness		Average Breaking Strength (lbs)	Package Quantity	Weight		Application Tools
		in	mm	in	mm			lbs	kg	
Alloy 400 Band										
C80399	Alloy 400 Band	3/8	9.6	0.025	0.64	630	100'/Roll	3.7	1.7	C00169
C80499	Alloy 400 Band	1/2	12.7	0.030	0.76	1050	100'/Roll	5.1	2.4	C00369
C80599	Alloy 400 Band	5/8	15.8	0.030	0.76	1310	100'/Roll	7.7	3.5	C40099
C80699	Alloy 400 Band	3/4	19.1	0.030	0.76	1595	100'/Roll	7.7	3.6	J02069*

*The J02069 can be used with 3/8" maximum width product.



Alloy 400 Buckle

Part No.	Material	Width		Package Quantity	Weight	
		in	mm		lbs	kg
Alloy 400 Buckle						
C85399	Alloy 400	3/8	9.6	100/Box	0.8	0.4
C85499	Alloy 400	1/2	12.7	100/Box	2.1	1.0
C85599	Alloy 400	5/8	15.8	100/Box	2.4	1.0
C85699	Alloy 400	3/4	19.1	100/Box	3.7	1.7



Special Purpose Band

All Purpose Band (coated & uncoated)

Part No.	Material	Width		Thickness		Diameter of Hole		Package Quantity	Weight	
		in	mm	in	mm	in	mm		lbs	kg
All Purpose Band Coated										
AE4759	316 SS	1/2	12.7	0.050	1.3	0.19	5	82.5'/Roll	3.1	1.4
AE4769	316 SS	3/4	19.1	0.050	1.3	0.27	7	82.5'/Roll	5.3	2.4
AE4779	316 SS	1	25.4	0.050	1.3	0.31	8	82.5'/Roll	7.3	3.3
NOTE: Material thickness includes PPA 571 coating - Base material thickness is 0.030"										
All Purpose Band Uncoated										
AE4259	316 SS	1/2	12.7	0.030	0.76	0.19	5	82.5'/Roll	3.1	1.4
AE4269	316 SS	3/4	19.1	0.030	0.76	0.27	7	82.5'/Roll	4.6	2.1
AE4279	316 SS	1	25.4	0.030	0.76	0.31	8	82.5'/Roll	5.5	2.5



BAND-IT reserves the right to substitute material with equal or better corrosion resistance and/or mechanical specifications.

Band & Buckle Kits



BAND-IT® Warehouse Kit C27599

- Portable rugged container, 16" X 8-1/2" X 9-3/4" (Weight: 51.5lbs, 23.4kg)
- Kit includes: 1 each - C00169, Close quarter Tension nut, C20299, C20399, C20499, C20599, C20699, C25399, C25499, C25599, C25699, C72499 and C72699



BAND-IT® Band & Buckle Kit C27699 & C27799

- Basic starter kit in a polyethylene case
- Two versions available:
 - C27699 - 1/2" band & buckle kit: 1- C00169, 1- C20499, 1- C25499 and 1- C72499 (kit weight - 17.2lbs, 7.8kg)
 - C27799 - 3/4" band & buckle kit: 1- C00169, 1- C20699, 1- C25699 and 1- C72699 (kit weight - 21.6lbs, 9.8kg)



Pok-It Pak Kit J10099

- Polyethylene carrying case
- Kit includes: J02069 Pok-It II tool, 1- C20299, 1- C20399, 1- C25299, 1- C25399, 1- C72099, 1- C72299, 80- Junior Smooth ID clamps (20- 3/8"W X 13/16" dia, 20- 3/8" X 1-3/8" dia, 20- 1/4" X 3/4" dia, 20- 3/8" X 1-3/8" dia), 10- BAND-FAST® (1/4" X 16" L), and 10- BAND-FAST® (1/4" X 34" L)

201 Stainless Steel Band and Buckle Kits

Our most popular band and buckle is available in convenient kits. Each kit contains just the right amount of band and buckles ready to take with you on the job.

C204BB (1/2" Blue Tote, 6.13lbs) - 100' band with 35 Ear-Lokt Buckles

C206BB (3/4" Red Tote, 8.88lbs) - 100' band with 25 Ear-Lokt Buckles



BAND-FAST®

BAND-FAST® is a pre-cut band with smoother edges that creates a safer and more efficient working environment with decreased installation labor.



BAND-FAST® with Ear-Lokt Buckle with Black COLOR-IT® - Polyester

Part No.	Material	Width		Thickness		Finished Length		Max. Dia. Single Wrap		Max. Dia. Double Wrap		Package Quantity	Color	Application Tools
		in	mm	in	mm	in	mm	in	mm	in	mm			
BAND-FAST® with Ear-Lokt Buckle with Black COLOR-IT® - Polyester														
BFES-A0830-020-P900C†	201 SS	1/2	12.7	0.030	0.76	20	51	4	102	2	51	25/Box	Black†	C00169 C00369 C07569 C08569 C40099
BFES-A0830-024-P900C†	201 SS	1/2	12.7	0.030	0.76	24	61	5	127	2.5	64	25/Box	Black†	
BFES-A0830-027-P900C†	201 SS	1/2	12.7	0.030	0.76	27	69	6	152	3	76	25/Box	Black†	
BFES-A0830-034-P900C†	201 SS	1/2	12.7	0.030	0.76	34	86	8	203	4	102	25/Box	Black†	
BFES-A0830-041-P900C†	201 SS	1/2	12.7	0.030	0.76	41	104	10	254	5	127	25/Box	Black†	
BFES-A0830-048-P900C†	201 SS	1/2	12.7	0.030	0.76	48	122	12	305	6	152	25/Box	Black†	
BFES-A0830-055-P900C†	201 SS	1/2	12.7	0.030	0.76	55	140	14	356	7	178	25/Box	Black†	
BFES-A0830-069-P900C†	201 SS	1/2	12.7	0.030	0.76	69	175	18	457	9	229	25/Box	Black†	
BFES-A0830-076-P900C†	201 SS	1/2	12.7	0.030	0.76	76	193	20	508	10	254	15/Box	Black†	
BFES-A0830-090-P900C†	201 SS	1/2	12.7	0.030	0.76	90	229	24	610	12	305	15/Box	Black†	
BFES-A0830-020-P900C	201 SS	3/4	19.1	0.030	0.76	20	51	4	102	2	51	25/Box	Black	
BFES-A1230-024-P900C	201 SS	3/4	19.1	0.030	0.76	24	61	5	127	2.5	64	25/Box	Black	
BFES-A1230-027-P900C	201 SS	3/4	19.1	0.030	0.76	27	69	6	152	3	76	25/Box	Black	
BFES-A1230-034-P900C	201 SS	3/4	19.1	0.030	0.76	34	86	8	203	4	102	25/Box	Black	
BFES-A1230-041-P900C	201 SS	3/4	19.1	0.030	0.76	41	104	10	254	5	127	25/Box	Black	
BFES-A1230-048-P900C	201 SS	3/4	19.1	0.030	0.76	48	122	12	305	6	152	25/Box	Black	
BFES-A1230-055-P900C	201 SS	3/4	19.1	0.030	0.76	55	140	14	356	7	178	25/Box	Black	
BFES-A1230-069-P900C	201 SS	3/4	19.1	0.030	0.76	69	175	18	457	9	229	25/Box	Black	
BFES-A1230-076-P900C	201 SS	3/4	19.1	0.030	0.76	76	193	20	508	10	254	15/Box	Black	
BFES-A1230-090-P900C	201 SS	3/4	19.1	0.030	0.76	90	229	24	610	12	305	15/Box	Black	

† BAND-FAST® in 1/2" wide 201 SS is also available in other COLOR-IT colors and buckle configurations (see page 13).

C00169



BAND-IT® Tool

C00369



Heavy Duty Tool

C07569



Bantam Tool

C40099



Ratchet Tool

BAND-FAST® Open End with Center Punch Clip

SS Part No.	Width		Thickness		Length**		Inside Diameter Single Wrap		Inside Diameter Double Wrap		Pkg Qty	Application Tools
	In	mm	In	mm	In	mm	In	mm	In	mm		
BAND-FAST® Open End with Center Punch Clip												
O325S9	3/8	9.6	0.020	0.51	24.0	610	6	152	3	76	100/Box	T30069
O16S99	5/8	15.8	0.020	0.51	31.0	787	8	203	4	102	50/Box	

T30069 Center Punch Tool



For quick installation

NOTE: Take the object circumference and add 6" to grip with the tool (2 X circumference for double wrap plus 6" for tail insertion).

BAND-FAST®

BAND-FAST® is a pre-cut band with smoother edges that creates a safer and more efficient working environment with decreased installation labor.



BAND-FAST® Precut and Assembled with Clip

Part No.	Material	Width		Thickness		Finished Length		Max. Dia. Single Wrap		Max. Dia. Double Wrap		Package Quantity	Weight		Application Tools
		in	mm	in	mm	in	cm	in	mm	in	mm		lbs	kg	
BAND-FAST® Precut and Assembled with Clip															
L20399	201 SS	1/4	6.4	0.020	0.51	10	25	2	50	not suggested		100/Box	2.2	0.9	C00169 C00369 C07569 C40099 J02069*
L20499	201 SS	1/4	6.4	0.020	0.51	16	40	3-1/2	88	1-1/2	38	100/Box	3.1	1.4	
L20799	201 SS	1/4	6.4	0.020	0.51	19	48	5	127	2-1/2	63	100/Box	3.5	1.6	
L20899	201 SS	1/4	6.4	0.020	0.51	26	68	7	177	3-1/2	88	100/Box	4.6	2.1	
L21099	201 SS	1/4	6.4	0.020	0.51	34	86	9	228	4-1/2	114	100/Box	5.6	2.6	
L22199	201 SS	3/8	9.6	0.025	0.64	16	40	3-1/2	88	1-1/2	38	100/Box	6.2	2.8	
L22999	201 SS	3/8	9.6	0.025	0.64	44	112	12	305	6	152	25/Box	3.6	1.6	
L24299	201 SS	1/2	12.7	0.030	0.76	18	45	4	102	2	50	100/Box	10.5	4.8	
L24699	201 SS	1/2	12.7	0.030	0.76	31	78	8	203	4	101	25/Box	4.7	2.1	
L26399	201 SS	5/8	15.8	0.030	0.76	21	53	5	127	2-1/2	63	100/Box	15.1	6.8	
L27199	201 SS	5/8	15.8	0.030	0.76	56	142	16	406	8	203	25/Box	9.0	4.1	
L27399	201 SS	5/8	15.8	0.030	0.76	69	508	20	508	10	175	25/Box	10.7	4.8	
L28499	201 SS	3/4	19.1	0.030	0.76	24	60	6	152	3	76	50/Box	10.9	4.9	
L28899	201 SS	3/4	19.1	0.030	0.76	37	93	10	254	5	127	25/Box	7.6	3.5	
L29099	201 SS	3/4	19.1	0.030	0.76	50	127	14	355	7	177	25/Box	9.7	4.4	
L29299	201 SS	3/4	19.1	0.030	0.76	62	157	18	457	9	228	25/Box	11.6	5.3	

* The J02069 can be used with 3/8" maximum width product

BAND-FAST® Precut and Assembled with Ear-Lokt Buckle

Part No.	Material	Width		Thickness		Finished Length		Max. Dia. Single Wrap		Max. Dia. Double Wrap		Package Quantity	Application Tools
		in	mm	in	mm	in	cm	in	mm	in	mm		
BAND-FAST® Precut and Assembled with Ear-Lokt Buckle													
BFES-A0830-020	201 SS	1/2	12.7	0.030	0.76	20	51	4	102	2	51	25/Box	C00169 C00369 C07569 C08569 C40099
BFES-A0830-024	201 SS	1/2	12.7	0.030	0.76	24	61	5	127	2.5	64	25/Box	
BFES-A0830-027	201 SS	1/2	12.7	0.030	0.76	27	69	6	152	3	76	25/Box	
BFES-A0830-034	201 SS	1/2	12.7	0.030	0.76	34	86	8	203	4	102	25/Box	
BFES-A0830-041	201 SS	1/2	12.7	0.030	0.76	41	104	10	254	5	127	25/Box	
BFES-A0830-048	201 SS	1/2	12.7	0.030	0.76	48	122	12	305	6	152	25/Box	
BFES-A0830-055	201 SS	1/2	12.7	0.030	0.76	55	140	14	356	7	178	25/Box	
BFES-A0830-069	201 SS	1/2	12.7	0.030	0.76	69	175	18	457	9	229	25/Box	
BFES-A0830-076	201 SS	1/2	12.7	0.030	0.76	76	193	20	508	10	254	15/Box	
BFES-A0830-090	201 SS	1/2	12.7	0.030	0.76	90	229	24	610	12	305	15/Box	
BFES-A1230-020	201 SS	3/4	19.1	0.030	0.76	20	51	4	102	2	51	25/Box	
BFES-A1230-024	201 SS	3/4	19.1	0.030	0.76	24	61	5	127	2.5	64	25/Box	
BFES-A1230-027	201 SS	3/4	19.1	0.030	0.76	27	69	6	152	3	76	25/Box	
BFES-A1230-034	201 SS	3/4	19.1	0.030	0.76	34	86	8	203	4	102	25/Box	
BFES-A1230-041	201 SS	3/4	19.1	0.030	0.76	41	104	10	254	5	127	25/Box	
BFES-A1230-048	201 SS	3/4	19.1	0.030	0.76	48	122	12	305	6	152	25/Box	
BFES-A1230-055	201 SS	3/4	19.1	0.030	0.76	55	140	14	356	7	178	25/Box	
BFES-A1230-069	201 SS	3/4	19.1	0.030	0.76	69	175	18	457	9	229	25/Box	
BFES-A1230-076	201 SS	3/4	19.1	0.030	0.76	76	193	20	508	10	254	15/Box	
BFES-A1230-090	201 SS	3/4	19.1	0.030	0.76	90	229	24	610	12	305	15/Box	

General Use Band & Buckle

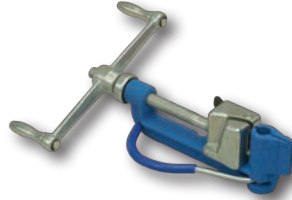
Roll Band with COLOR-IT®

Part No.	Material	Width		Thickness		Package Quantity	Weight		Color	RAL#	Application Tools
		in	mm	in	mm		lbs	kg			
Roll Band with COLOR-IT® - Polyester											
C144C9-P000	201/301 SS	1/2	12.7	0.025	0.64	100'/Roll	5.1	2.3	White	9016	C00169 C00369 C07569 C08569 C40099
C144C9-P100	201/301 SS	1/2	12.7	0.025	0.64	100'/Roll	5.1	2.3	Red	3001	
C144C9-P200	201/301 SS	1/2	12.7	0.025	0.64	100'/Roll	5.1	2.3	Orange	2008	
C144C9-P300	201/301 SS	1/2	12.7	0.025	0.64	100'/Roll	5.1	2.3	Yellow	1018	
C144C9-P302	201/301 SS	1/2	12.7	0.025	0.64	100'/Roll	5.1	2.3	Tan	1001	
C144C9-P400	201/301 SS	1/2	12.7	0.025	0.64	100'/Roll	5.1	2.3	Green	6032	
C144C9-P500	201/301 SS	1/2	12.7	0.025	0.64	100'/Roll	5.1	2.3	Blue	5002	
C144C9-P550	201/301 SS	1/2	12.7	0.025	0.64	100'/Roll	5.1	2.3	Lt. Blue	5012	
C144C9-P600	201/301 SS	1/2	12.7	0.025	0.64	100'/Roll	5.1	2.3	Purple	4008	
C144C9-P700	201/301 SS	1/2	12.7	0.025	0.64	100'/Roll	5.1	2.3	Gray	7036	
C144C9-P800	201/301 SS	1/2	12.7	0.025	0.64	100'/Roll	5.1	2.3	Brown	8002	
C144C9-P900	201/301 SS	1/2	12.7	0.025	0.64	100'/Roll	5.1	2.3	Black	9004	
C206C9-P900	201/301 SS	3/4	19.1	0.030	0.76	100'/Roll	7.6	3.4	Black	9004	
Ear-Lokt Buckles with COLOR-IT® - Polyester											
C25499-D900	201/301 SS	1/2	12.7			100/Box	1.7	0.8	Black	9004	
C25699-D900	201/301 SS	3/4	19.1			100/Box	3.5	1.6	Black	9004	



Colored Roll Band in Tote

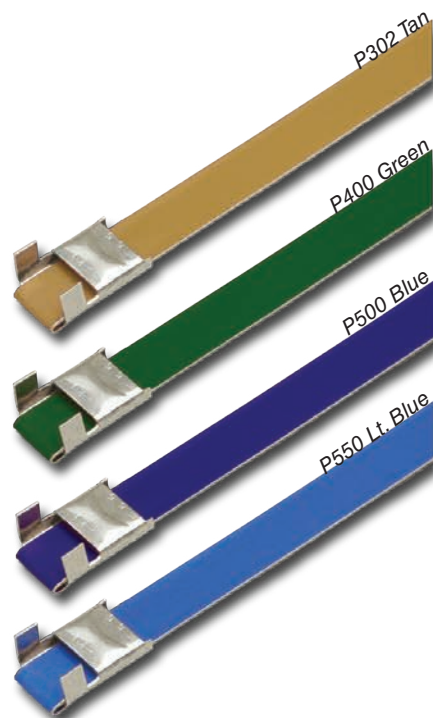
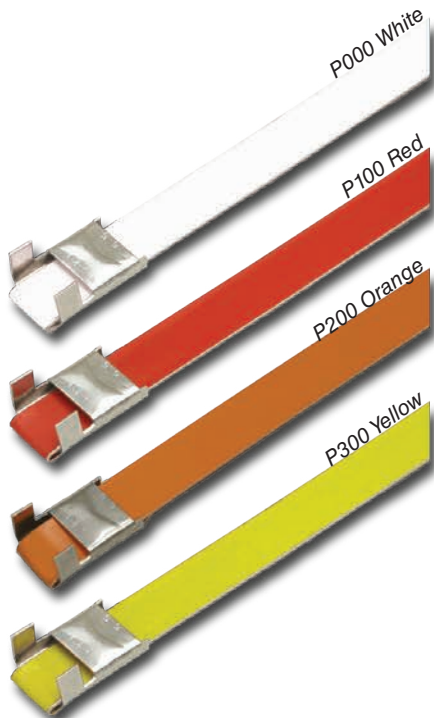
C00169 Standard Banding Tool



C07569 Bantam Tool



Roll Band with COLOR-IT® - Custom colors available upon request



ULTRA-LOK® Clamping System



3/4" Ultra-Lok® Free End Band with Buckle forms a low profile, tamper proof lock.

Ultra-Lok® Free End Banding System

Designed for quick installation, highest clamping force and gap-free inside diameter. The best choice for demanding applications!

- Apply 3-5 times faster than band and buckle hand tools
- Unique lock formed under full tension maximizing tightness
- 201 1/4 hard SS band provides greater material strength allowing tighter clamps and can be double wrapped for additional strength
- 3/4" band available in plastic totes with buckles
- Application Tools: UL4000-D cordless, and UL9010 110-volt AC



1/2" Ultra-Lok® Free End Band with Buckle



3/4" Ultra-Lok® Tote with convenient buckle storage



UL4000-D

Longer charge and battery life. Now powered with a Lithium-ion battery, the UL4000-D battery charge lasts longer with consistent peak performance through the life of the battery. In addition, the UL4000-D uses a mechanical clutch and predetermined torque settings to provide a consistent tightness that eliminates assembly guesswork.

ULTRA-LOK® Tool with Accessories

Part No.	Description
Ultra-Lok® Tool with Accessories	
UL4000-D	ULTRA-LOK® tool comes fully assembled in a custom protective case made with impact resistant HDPE thermoplastic. Included with the UL4000-D: 1- spare 18 volt Lithium-ion battery, 1- battery charger, tool lubrication/assembly tool kit and operators manuals.
M09387	1/2" shear plate (SOLD SEPARATELY) is compatible with the UL 4000-D,C,B, UL4000, and UL9010 to convert from 3/4" ULTRA-LOK® to 1/2" ULTRA-LOK® Clamp systems. For models of the UL9010 built prior to October 2006, use the ULK249 upgrade kit.
UL4199	UL Safety Belt (SOLD SEPARATELY) is compatible with the UL 4000-D,C,B, UL4000, and UL9010.

ULTRA-LOK® Clamping System

Part No.	Material	Width		Length		Single Wrap		Double Wrap		Package Quantity	Weight		Application Tools
		in	mm	in	mm	in	mm	in	mm		lbs	kg	
Ultra-Lok® Band													
UL1018**	201 SS	1/2	12.7	18	457	3	76	not suggested		50/Box	4.1	1.9	UL4000D UL9010
UL1024**	201 SS	1/2	12.7	24	610	5	127	2.5	64	50/Box	5.3	2.4	
UL1028**	201 SS	1/2	12.7	28	711	6	152	3	76	50/Box	6.4	0.9	
UL1032**	201 SS	1/2	12.7	32	813	7	178	3.5	89	50/Box	7.2	3.3	
UL1036**	201 SS	1/2	12.7	36	914	8	203	4	102	50/Box	8.0	3.6	
UL1046**	201 SS	1/2	12.7	46	1168	11	280	5.5	140	25/Box	5.9	2.7	
UL1056**	201 SS	1/2	12.7	56	1422	14	356	7	178	25/Box	7.1	3.2	
UL1070**	201 SS	1/2	12.7	70	1778	18	457	9	229	25/Box	8.5	3.9	
UL1086**	201 SS	1/2	12.7	86	2184	22	559	11	280	25/Box	10.2	4.6	
UL1096**	201 SS	1/2	12.7	96	2438	25	635	12.5	318	25/Box	11.2	5.1	
UL1106**	201 SS	1/2	12.7	106	2692	28	711	14	356	25/Box	12.3	5.6	
UL1116**	201 SS	1/2	12.7	116	2946	31	787	15.5	394	25/Box	13.3	6.0	
UL2020	201 SS	3/4	19.1	20	508	4	102	not suggested		30/Tote	4.3	2.0	
UL2024	201 SS	3/4	19.1	24	610	5	127	not suggested		25/Tote	4.1	1.9	
UL2028	201 SS	3/4	19.1	28	711	6	152	not suggested		21/Tote	4.3	2.0	
UL2032	201 SS	3/4	19.1	32	813	7	178	3.5	89	19/Tote	4.3	2.0	
UL2036	201 SS	3/4	19.1	36	914	8	252	4	102	33/Tote	8.2	3.7	
UL2040	201 SS	3/4	19.1	40	1016	10	254	4.5	127	30/Tote	7.75	3.5	
UL2044	201 SS	3/4	19.1	44	1118	11	267	5.5	140	27/Tote	8.2	3.7	
UL2048	201 SS	3/4	19.1	48	1219	12	305	6	153	25/Tote	8.2	3.7	
UL2052	201 SS	3/4	19.1	52	1321	13	330	6.5	165	23/Tote	8.2	3.7	
UL2060	201 SS	3/4	19.1	60	1524	15	381	7.5	191	20/Tote	8.2	3.7	
UL2068	201 SS	3/4	19.1	68	1727	17	445	8.5	216	17/Tote	8.2	3.7	
UL2076	201 SS	3/4	19.1	76	1930	20	508	10	254	15/Tote	8.2	3.7	
UL2084	201 SS	3/4	19.1	84	2134	22	559	11	280	14/Tote	8.2	3.7	
UL2092	201 SS	3/4	19.1	92	2337	24	622	12	305	13/Tote	8.2	3.7	
UL2120	201 SS	3/4	19.1	120	3048	32	826	16	407	10/Tote	8.2	3.7	
UL2150	201 SS	3/4	19.1	150	3810	41	1029	20.5	508	8/Tote	8.2	3.7	
UL2175	201 SS	3/4	19.1	175	4445	48	1232	24	610	7/Tote	8.2	3.7	
Ultra-Lok® Buckles													
UB2549	201 SS	1/2	12.7							100/Box	3.7	1.7	
UB2569	201 SS	3/4	19.1							100/Box	3.7	1.7	

** 1/2" Bands will require M09387 for UL4000 and UL9010 Tool.

3/4" width band lengths 36" or longer in 100' Totes; 34" or less in 50' Totes.

UL4000-D Ultra-Lok® Cordless Tool

- Applies 1/2"* & 3/4" Ultra-Lok preformed clamps or Band and Buckle
- Ultra-Lok clamps can be applied four times faster than conventional clamps
- Supplied with spare battery and charger with Automatic Battery Tune-Up feature
- Locks under full tension
- Adjustable speed and torque
- Consistent, repeatable tensioning
- Available in 110 or 220 volt power source
- Ideal for field repairs



UL4000-D

* For 1/2" applications, must use M09387 1/2" Shear Plate.

Preformed Clamps

Chemical Plants, Food Processing, Plant Maintenance, Government, Communications & Utility

Engineered Fastening and Bundling Systems for Extreme Conditions:

Products: Ultra-Lok®, Junior® Smooth ID and Center Punch.

Benefits:

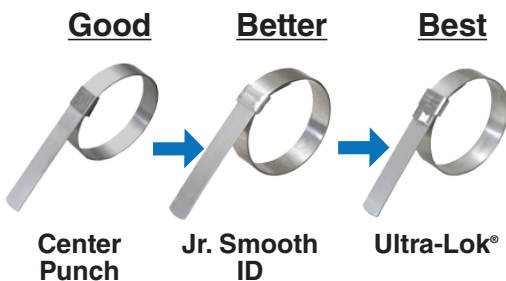
- Superior performance in extreme temperatures, chemical exposure, salt spray conditions and UV light exposure
- Low inventory requirements
- Multiple preformed clamp solutions for various environments, markets and industries
- Hand and production application tools
- Permanent and secure locking mechanisms
- Reliable and efficient installation tools
- Low installed cost
- High quality materials that meets ASTM standards
- Quality certified manufacturing process management – ISO9001 with TS 16949

Commonly Used Hose Applications:

- Air/Multi-Purpose
- Food Handling
- Lay Flat
- Petroleum Drop, Vapor, Discharge and Suction
- Water - General Purpose, Suction, Discharge
- Chemical Hose - Plastic and Rubber Lined

Preformed Clamps Chart

Good Center Punch	Better Junior Smooth ID	Best Ultra-Lok®
Preformed Clamps		
2 Material choices	3 Material choices	201 1/4 hard stainless steel
Locks using conical punch	Vibration resistant lip wrap lock	Superior vibration resistance, locks under full tension
Manufactured with stainless steel buckles to provide greater locking strength	Smooth ID design reduces leak path	Smooth ID design reduces leak pat
Sizes from 13/16" to 8" available	Sizes from 13/16" to 8" available	Patented lock design, sizes from 1 1/2" to 9" available, longer length open end clamps also available
Applied with choice of 2 hand tools, or one air production tool	Applied with a choice of 1 hand tool, or 2 air production tools	Applied with electric or portable battery powered tool



CAUTION: BAND-IT recommends that hose assemblies are tested per established industry test methods and tagged for your safety prior to use.

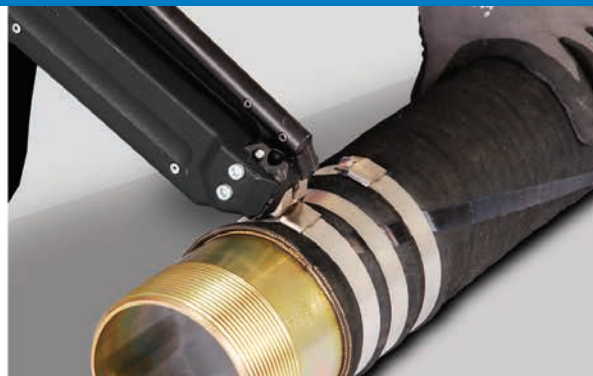
ULTRA-LOK® Clamping System



Preformed Clamping Systems

Designed for quick installation, highest clamping force and gap-free inside diameter. The best choice for demanding applications!

- Strongest band clamping system available
- Double wrapped 1/4 hard 201SS for superior strength
- Unique lock formed under full tension maximizes tightness
- Thicker buckle is 2-3 times stronger than other preformed clamps
- Smooth inside diameter designed to eliminate leak paths
- Buckle hood protects lock from snags
- Install Ultra-Lok® clamping systems quickly using portable power tools



Preformed Clamps

Part No.	Material	Width		Thickness		Inside Diameter		Package Weight		Pkg Qty	Tools
		In	mm	In	mm	In	mm	Lbs	Kg		
Ultra-Lok® Preformed Clamp											
UL2799**	201 SS 1/4 Hard	1/2	12.7	0.030	0.76	1.5	38	9.1	4.1	100/Box	UL4000-D UL9010
UL2839**	201 SS 1/4 Hard	1/2	12.7	0.030	0.76	2	50	10.6	4.8	100/Box	
UL2869**	201 SS 1/4 Hard	1/2	12.7	0.030	0.76	2.75	69	12.7	5.8	100/Box	
UL2919**	201 SS 1/4 Hard	1/2	12.7	0.030	0.76	4	101	16.7	7.6	100/Box	
UL2279	201 SS 1/4 Hard	3/4	19.1	0.030	0.76	2	50	14.9	6.8	100/Box	
UL2109	201 SS 1/4 Hard	3/4	19.1	0.030	0.76	2.75	69	9.2	4.2	50/Box	
UL2119	201 SS 1/4 Hard	3/4	19.1	0.030	0.76	3	76	10.4	4.7	50/Box	
UL2129	201 SS 1/4 Hard	3/4	19.1	0.030	0.76	3.5	88	10.8	4.9	50/Box	
UL2139	201 SS 1/4 Hard	3/4	19.1	0.030	0.76	4	101	6.4	2.9	25/Box	
UL2149	201 SS 1/4 Hard	3/4	19.1	0.030	0.76	4.5	114	7	3.2	25/Box	
UL2159	201 SS 1/4 Hard	3/4	19.1	0.030	0.76	5	127	7.5	3.4	25/Box	
UL2709	201 SS 1/4 Hard	3/4	19.1	0.030	0.76	5.25	139	7.3	3.3	25/Box	
UL2169	201 SS 1/4 Hard	3/4	19.1	0.030	0.76	6	152	8.4	3.8	25/Box	
UL2179	201 SS 1/4 Hard	3/4	19.1	0.030	0.76	6.5	165	10.2	4.6	25/Box	
UL2189	201 SS 1/4 Hard	3/4	19.1	0.030	0.76	7	177	9.8	4.4	25/Box	
UL2199	201 SS 1/4 Hard	3/4	19.1	0.030	0.76	8	203	11.0	5.0	25/Box	
UL2289	201 SS 1/4 Hard	3/4	19.1	0.030	0.76	9	228	5.1	2.31	10/Box	

**1/2" bands require M09387 for UL4000 or UL9010 tools.



UL 9010 Ultra-Lok® Electric Tool

- Applies 1/2"* & 3/4" Ultra-Lok preformed clamps or Band and Buckle
- Locks under full tension
- Adjustable speed and torque
- Consistent, repeatable tensioning
- Ideal for production and large diameter hose clamping
- No roll up required

BAND-IT JR® Smooth ID



Preformed Clamping Systems

Wide choice of sizes and materials in a leak resistant design.

- Smooth I.D. Clamps reduce the risk of leaks especially when used on thin walled hoses
- Vibration resistant lip lock design. No hammering or crimping
- Unique buckle nest and smooth ID design reduces leak paths
- Double wrapped steel bands for additional strength
- Various materials for corrosive environments
- Band widths - 1/4", 3/8", 1/2", 5/8" and 3/4"
- Available for hose assemblies up to 8" outside diameter



Pneumatic and Hand Tools

S75099 Pneumatic Junior® Clamp Application Tool



Use with

BAND-IT® Junior® Smooth ID
Preformed Clamps

S35099 Pneumatic Junior® Clamp Automatic Air Tool



Use with

BAND-IT® Junior® Smooth ID
Preformed Clamps

C00269 Junior® Preformed Clamp Tool



Use with

BAND-IT® Junior® Smooth ID
Preformed Clamps

BAND-IT JR® Smooth ID

Preformed Clamping Systems

Wide choice of sizes and materials.

Suggested Band Clamp Widths, Rollover Style: Hose ID	Clamp Band Width
Use with Juniors & Junior Smooth Clamps	
<1/2"	3/8"
1/2" - 3/4"	1/2"
3/4" - 2"	5/8"
>2"	3/4"

201 SS* Part No.	316 SS* Part No.	GCS SS* Part No.	Width		Thickness		Inside Diameter		Package Weight		Package Quantity	Application Tools
			In	mm	In	mm	In	mm	Lbs	Kg		
BAND-IT® Junior® Smooth ID Clamp												
JS2409	NA	NA	1/2	6.4	0.020	0.51	0.8125	20	2.0	0.9	100/Box	C00169** J00169**
JS2429	NA	NA	1/2	6.4	0.020	0.51	1.0	25	2.1	1.0	100/Box	
JS2419	NA	NA	1/2	6.4	0.020	0.51	1.375	34	2.5	1.1	100/Box	
JS2529	NA	NA	1/2	6.4	0.020	0.51	1.5	38	2.6	1.2	100/Box	
JS2539	NA	NA	1/2	6.4	0.020	0.51	2.0	50	3.2	1.5	100/Box	
JS2209	NA	NA	1/2	6.4	0.020	0.51	2.5	63	3.7	1.7	100/Box	
JS2569	NA	NA	1/2	6.4	0.020	0.51	2.75	69	3.8	1.7	100/Box	
JS2449	NA	NA	1/2	6.4	0.020	0.51	3	76	4.2	1.9	100/Box	
JS2579	NA	NA	1/2	6.4	0.020	0.51	3.5	88	4.6	2.1	100/Box	
JS2589	NA	NA	1/2	6.4	0.020	0.51	4.0	101	5.3	2.4	100/Box	
JS2599	NA	NA	1/2	6.4	0.020	0.51	4.5	114	5.7	2.6	100/Box	
JS2019	JS4019	JS3019	3/8	9.6	0.025	0.64	0.8125	20	3.6	1.6	100/Box	C00169** J00169** J05069**
JS2439	NA	JS3439	3/8	9.6	0.025	0.64	1.0	25	3.9	1.8	100/Box	
JS2029	JS4029	JS3029	3/8	9.6	0.025	0.64	1.375	34	5.0	2.3	100/Box	
JS2459	JS4459	JS3459	3/8	9.6	0.025	0.64	2.0	50	5.9	2.7	100/Box	
JS2219	JS4219	JS3219	3/8	9.6	0.025	0.64	2.5	63	6.8	3.1	100/Box	
JS2469	NA	JS3469	3/8	9.6	0.025	0.64	3.0	76	7.5	3.4	100/Box	
JS2559	JS4559	JS3559	3/8	9.6	0.025	0.64	3.5	88	8.6	3.9	100/Box	
JS2489	JS4489	JS3489	3/8	9.6	0.025	0.64	4.0	101	9.5	4.3	100/Box	
JS2039	JS4039	JS3039	1/2	12.7	0.030	0.76	1.0	25	6.5	3.0	100/Box	
JS2049	JS4049	JS3049	1/2	12.7	0.030	0.76	1.25	31	7.2	3.3	100/Box	
JS2319	NA	JS3319	1/2	12.7	0.030	0.76	1.5	38	8.1	3.7	100/Box	
JS2369	NA	JS3369	1/2	12.7	0.030	0.76	1.75	44	8.7	4.0	100/Box	
JS2379	JS4379	JS3379	1/2	12.7	0.030	0.76	2.0	50	9.4	4.3	100/Box	C00169** J00169** J05069**
JS2339	JS4339	JS3339	1/2	12.7	0.030	0.76	2.5	63	10.8	4.9	100/Box	
JS2309	NA	JS3309	1/2	12.7	0.030	0.76	2.75	69	11.3	5.1	100/Box	
JS2349	JS4349	JS3349	1/2	12.7	0.030	0.76	3.0	76	12.2	5.5	100/Box	
JS2479	JS4479	JS3479	1/2	12.7	0.030	0.76	3.5	88	13.6	6.2	100/Box	
JS2499	JS4499	JS3499	1/2	12.7	0.030	0.76	4.0	101	14.9	6.8	100/Box	
JS2059	JS4059	JS3059	5/8	15.8	0.030	0.76	1.5	38	10.4	4.7	100/Box	
JS2069	JS4069	JS3069	5/8	15.8	0.030	0.76	1.75	44	11.3	5.1	100/Box	
JS2079	JS4079	JS3079	5/8	15.8	0.030	0.76	2.0	50	12.2	5.5	100/Box	
JS2089	JS4089	JS3089	5/8	15.8	0.030	0.76	2.25	57	13.3	6.0	100/Box	
JS2099	JS4099	JS3099	5/8	15.8	0.030	0.76	2.5	63	13.9	6.3	100/Box	
JS2279	JS4279	JS3279	3/4	19.1	0.030	0.76	2.0	50	14.9	6.8	100/Box	C00169** J00169** J05069**
JS2109	JS4109	JS3109	3/4	19.1	0.030	0.76	2.75	69	9.2	4.2	50/Box	
JS2119	JS4119	JS3119	3/4	19.1	0.030	0.76	3.0	76	9.7	4.4	50/Box	
JS2129	JS4129	JS3129	3/4	19.1	0.030	0.76	3.5	88	10.8	4.9	50/Box	
JS2139	JS4139	JS3139	3/4	19.1	0.030	0.76	4.0	101	6.1	2.8	25/Box	
JS2149	JS4149	JS3149	3/4	19.1	0.030	0.76	4.5	114	6.7	3.0	25/Box	
JS2159	JS4159	JS3159	3/4	19.1	0.030	0.76	5.0	127	7.2	3.3	25/Box	
JS2709	JS4709	JS3709	3/4	19.1	0.030	0.76	5.25	133	7.3	3.3	25/Box	
JS2169	JS4169	JS3169	3/4	19.1	0.030	0.76	6.0	152	8.2	3.7	25/Box	
JS2179	JS4179	JS3179	3/4	19.1	0.030	0.76	6.5	165	9.2	4.2	25/Box	
JS2189	NA	JS3189	3/4	19.1	0.030	0.76	7.0	177	10.2	4.6	25/Box	
JS2199	NA	JS3199	3/4	19.1	0.030	0.76	8.0	203	11.0	5.0	25/Box	

* BAND-IT reserves the right to substitute material with equal or better corrosion resistance and/or mechanical specifications

** Junior® Adaptors, either J00169 or J05069, must be used with C00169

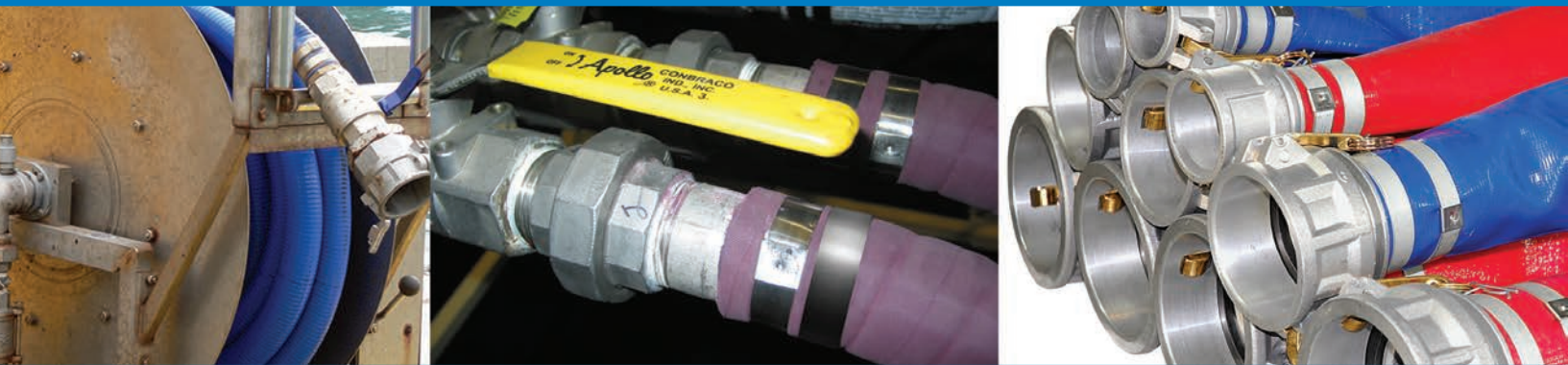
Center Punch Clamps



Preformed Clamping Systems

Designed to meet your specific application requirement.

- Lock with impact from a hammer using a conical punch designed into the tool
- Double wrapped steel bands using 201 Stainless Steel or galvanized carbon steel
- Manufactured with 201 Stainless Steel buckles to provide added locking strength
- Not recommended for use with fittings that may crack as a result of impact or poly fittings
- Install 3/8" and 5/8" width Center Punch clamping systems with the following hand tools: S03869, T30069. The SM1700 Pneumatic Production Tool installs 5/8" clamps without the typical roll up action



Center Punch Clamp Kit CP3999

Designed to meet your specific application requirement.

- For general plant maintenance and emergency field repairs
- Clamping range from 3/4" to 1" diameter
- Kit Includes: 4 CP3S99 Center Punch Clamps; 8 each - CP311S and CP6S99 Center Punch Clamps; 6 - CP5S99 Center Punch Clamps; 9 - CP8S99 Center Punch Clamps; 3 each O316S9, O10S99, BAND-FAST® Open End with Center Punch Clips; 1 - S03869 Center Punch Tool; Polyethylene Carrying Case.



Center Punch Clamps

Preformed Clamping Systems

201 SS* Part No.	GCS* Part No.	Width		Thickness		Inside Diameter		Package Weight		Package Quantity	Application Tools
		In	mm	In	mm	In	mm	Lbs	Kg		
Center Punch Clamp 0.025" Thickness											
CP3S99	CP0399	3/8	9.6	0.025	0.64	.8125	20	3.6	1.6	100/Box	S03869 T30069
CP311S	CP3119	3/8	9.6	0.025	0.64	1.375	35	4.6	2.1	100/Box	
CP4S99	CP0499	5/8	15.8	0.025	0.64	1	25	8.3	3.8	100/Box	
CP5S99	CP0599	5/8	15.8	0.025	0.64	1.25	32	8.7	4.0	100/Box	
CP6S99	CP0699	5/8	15.8	0.025	0.64	1.5	38	9.7	4.4	100/Box	
CP7S99	CP0799	5/8	15.8	0.025	0.64	1.75	44	10.6	4.8	100/Box	
CP8S99	CP0899	5/8	15.8	0.025	0.64	2	51	11.5	5.2	100/Box	
CP9S99	CP0999	5/8	15.8	0.025	0.64	2.25	57	12.6	5.7	100/Box	
CP10S9	CP1099	5/8	15.8	0.025	0.64	2.5	64	6.8	3.1	50/Box	
CP11S9	CP1199	5/8	15.8	0.025	0.64	2.75	70	7.3	3.3	50/Box	
CP12S9	CP1299	5/8	15.8	0.025	0.64	3	76	7.7	3.5	50/Box	
CP14S9	CP1499	5/8	15.8	0.025	0.64	3.5	89	8.7	4.0	50/Box	
CP16S9	CP1699	5/8	15.8	0.025	0.64	4	102	4.9	2.2	25/Box	
CP18S9	CP1899	5/8	15.8	0.025	0.64	4.5	114	5.5	2.5	25/Box	
CP20S9	CP2099	5/8	15.8	0.025	0.64	5	127	5.9	2.7	25/Box	
CP24S9	CP2499	5/8	15.8	0.025	0.64	6	152	6.8	3.1	25/Box	
CP26S9	CP2699	5/8	15.8	0.025	0.64	6.5	165	7.1	3.3	25/Box	
CP28S9	CP2899	5/8	15.8	0.025	0.64	7	178	7.4	3.4	25/Box	
CP32S9	CP3299	5/8	15.8	0.025	0.64	8	203	8.2	3.7	25/Box	
Center Punch Clamp 0.030" Thickness											
	PB0499	5/8	15.8	0.030	0.76	1	25	8.3	3.8	100/Box	S03869 T30069 SM1700
	PB0599	5/8	15.8	0.030	0.76	1.25	32	8.7	4.0	100/Box	
	PB0699	5/8	15.8	0.030	0.76	1.5	38	9.7	4.4	100/Box	
	PB0799	5/8	15.8	0.030	0.76	1.75	44	10.6	4.8	100/Box	
	PB0899	5/8	15.8	0.030	0.76	2	51	11.5	5.2	100/Box	
	PB0999	5/8	15.8	0.030	0.76	2.25	57	12.6	5.7	100/Box	
	PB1099	5/8	15.8	0.030	0.76	2.5	64	6.8	3.1	50/Box	
	PB1199	5/8	15.8	0.030	0.76	2.75	70	7.3	3.3	50/Box	
	PB1299	5/8	15.8	0.030	0.76	3	76	7.7	3.5	50/Box	
	PB1499	5/8	15.8	0.030	0.76	3.5	89	8.7	4.0	50/Box	
	PB1699	5/8	15.8	0.030	0.76	4	102	4.9	2.2	25/Box	
	PB1899	5/8	15.8	0.030	0.76	4.5	114	5.5	2.5	25/Box	
	PB2099	5/8	15.8	0.030	0.76	5	127	5.9	2.7	25/Box	
	PB2499	5/8	15.8	0.030	0.76	6	152	6.8	3.1	25/Box	
	PB2699	5/8	15.8	0.030	0.76	6.5	165	7.1	3.3	25/Box	
	PB2899	5/8	15.8	0.030	0.76	7	178	7.4	3.4	25/Box	
	PB3299	5/8	15.8	0.030	0.76	8	203	8.2	3.7	25/Box	

* BAND-IT reserves the right to substitute material with equal or better corrosion resistance and/or mechanical specifications



T30069 Center Punch Tool



Used to apply BAND-IT® 3/8" and 5/8" Center Punch and Galvanized Carbon Steel preformed clamps.

S03869 Center Punch Tool



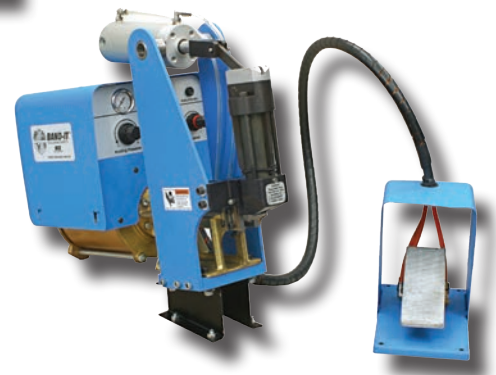
Versatile ratchet tool applies 3/8" and 5/8" Center Punch Clamps.

SM1700 Pneumatic Automatic Center Punch Clamp Air Tool

Designed to install BAND-IT® Center Punch 5/8" wide preformed clamps, made from 201 Stainless Steel and Galvanized Carbon Steel. Automatically tensions and cuts off clamp tail.

Use with

BAND-IT® Center Punch Preformed Clamps



Electrical Applications

Oil Rigs, Ships, Chemical Plants, Refineries, Industrial Complexes, Public Buildings, Mining, Bridges and Tunnels, Power Distribution, Transmission and Communications

Engineered Fastening and Bundling Systems for Extreme Conditions:

Electrical cable management, heat and sound shield fastening, instrument tubing and device attachment.

Products: Ball-Lokt™, Ball-Lok, Multi-Lok, Tie-Lok®, BAND-IT® Tie, BAND-FAST®, Uncoated and Coated Band & Clip**.

Benefits:

- Superior performance in extreme temperatures, chemical exposure, salt spray conditions and UV light exposure
- Permanent and secure locking mechanisms
- Reliable and efficient installation tools
- Low installed cost and long service life
- Proven performance coatings for abrasion protection and dissimilar metal contact (Nylon11, PPA 571, Polyester, Epoxy)
- Proven and controlled materials including - 201 SS, 304 SS, 316 SS, Alloy 400 & 625
- Quality certified manufacturing process management – ISO9001 with TS 16949

Identification Systems:

Indoor/Outdoor: Durable cable, pipe, fixture and asset identification engineered for extreme environments.

Products:

- BAND-IT® ID tags, COLOR-IT® banding, stainless steel embossing tape, imprintable stainless steel tags, stainless steel characters and carrier strips

Benefits:

- Functional in extreme temperatures, UV light exposure, salt spray and chemical exposure
- Long service life
- BAND-FAST® - 201 SS, 304 SS, 316 SS, Alloy 400 & 625
- Quality certified manufacturing process management – ISO9001 with TS 16949
- COLOR-IT® stainless steel banding
- Emboss, engrave or imprintable



Electrical Applications

Engineered Mounting Systems: Outdoor pole, tower & aerial applications for power, communication infrastructure and alternative energy.

Products:

- Mounting Hardware: Bolt clamp, mounting plate, stainless steel brackets
- Band and Buckle Systems: Ultra-Lok® system, band and buckle in various materials and widths

Benefits:

- Superior performance in extreme temperatures, UV light exposure and salt spray
- Corrosion resistant plating on all hardware
- Full tension and heavy duty fastening
- Low installed cost and long service life
- Band & Buckle - 201 SS, 304 SS, 316 SS, Alloy 400 & 625
- Quality certified manufacturing process management – ISO9001 with TS 16949
- Easily applied to pole without drilling
- Ideal for clamping cable splice closures
- Easy to install with no special tools required
- Many banding options

Certifications *For detailed certification information, see page 44.*



- **Russian Maritime Register of Shipping (RS)**
- Ball-Lok, Multi-Lok Ties, Tie-Lok® Ties, Mini Tie-Lok® Ties.



- **CE** - Ball-Lok Ties, BAND-IT AE Ties, Multi-Lok Ties, Tie-Lok® Ties, Mini Tie-Lok® Ties



- **DNV** - BAND-IT Ties, BALL-LOK Ties, BALL-LOKT Ties™, Multi-Lok Ties.



- **GL** - BAND-IT AE Ties, Multi-Lok Ties, Tie-Lok® Ties.



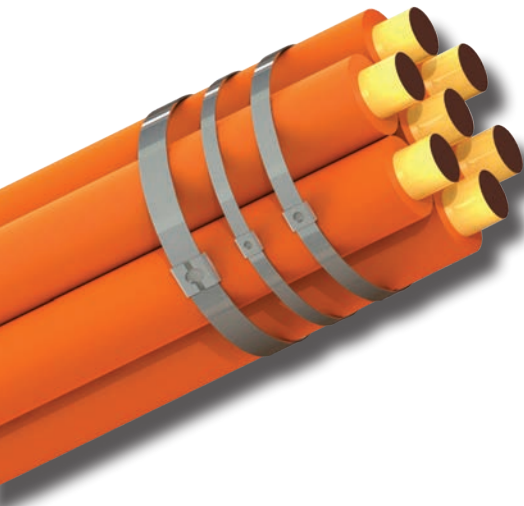
- **Lloyd's Register** - BAND-IT Ties, Multi-Lok Ties, Tie-Lok® Ties.



- **UL** - BALL-LOK Ties, BALL-LOKT Ties™, BAND-IT AE Ties, Tie-Lok® Ties, Multi-Lok Ties.



TIE-LOK® TIES



BAND-IT® Tie-Lok® ties offer a unique dimple lock with a smooth ID and a low profile.

Provides fast, consistent and reliable clamping tension. Used in many industries such as automotive, cable bundling and identification.

- Strong patented dimple lock
- Locks under full tension - no slipback
Three Widths: 0.177 (4.49mm), 0.25" (6.35mm) and 0.325" (9.6mm)
- Available in type 304 and type 316 Stainless Steel to provide good resistance to mild atmosphere, fresh water, UV rays and extreme environments
- 316 Stainless Steel for extreme environments
- Forms a low profile single wrapped assembly to secure cables, hoses, I.D. Tags, CV Boots, filter bags

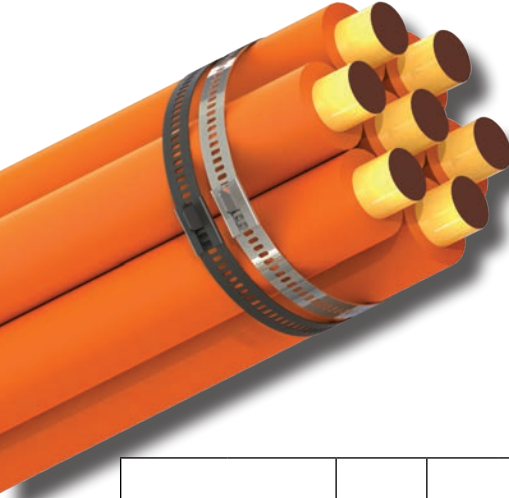
Part No.	Material	Width		Length		Thickness		Maximum Diameter Single Wrap		Minimum Loop Tensile Strength (Lbs)	Package Quantity	Application Tools
		In	mm	In	mm	In	mm	In	mm			
Tie-Lok® Tie												
AS2119	304 SS	0.25	6.4	10.0	254	0.015	0.38	2	51	250	100/Bag	A92079 IT1000
AS2129	304 SS	0.25	6.4	16.5	419	0.015	0.38	4	101	250	100/Bag	
AS2139	304 SS	0.25	6.4	22.5	572	0.015	0.38	6	152	250	100/Bag	
AS2149	304 SS	0.25	6.4	29.0	737	0.015	0.38	8	203	250	100/Bag	
AS2159	304 SS	0.25	6.4	35.0	889	0.015	0.38	10	254	250	100/Bag	
AS4119	316 SS	0.25	6.4	10.0	254	0.015	0.38	2	51	250	100/Bag	
AS4129	316 SS	0.25	6.4	16.5	419	0.015	0.38	4	101	250	100/Bag	
AS4139	316 SS	0.25	6.4	22.5	572	0.015	0.38	6	152	250	100/Bag	
AS4149	316 SS	0.25	6.4	29.0	737	0.015	0.38	8	203	250	100/Bag	
AS4159	316 SS	0.25	6.4	35.0	889	0.015	0.38	10	254	250	100/Bag	
AS6219	304 SS	0.375	9.6	7.2	184	0.020	0.51	1.5	40	350	100/Bag	IT6000 TL3800
AS6229	304 SS	0.375	9.6	10.0	254	0.020	0.51	2	51	350	100/Bag	
AS6239	304 SS	0.375	9.6	16.0	406	0.020	0.51	4	101	350	100/Bag	
AS6249	304 SS	0.375	9.6	22.5	572	0.020	0.51	6	152	350	100/Bag	
AS6259	304 SS	0.375	9.6	29.0	737	0.020	0.51	8	203	350	100/Bag	

* TL3800 to be used with 3/8" only.



Part No.	Material	Width		Length		Thickness		Maximum Diameter Single Wrap		Minimum Loop Tensile Strength (Lbs)	Package Quantity	Application Tools
		In	mm	In	mm	In	mm	In	mm			
Mini Tie-Lok® Tie												
AS2219	304 SS	0.177	4.5	7	165	0.015	0.38	1	25	100	100/Bag	A91079 IT Series
AS2229	304 SS	0.177	4.5	10	254	0.015	0.38	2	51	100	100/Bag	
AS2239	304 SS	0.177	4.5	16	406	0.015	0.38	4	102	100	100/Bag	
AS2249	304 SS	0.177	4.5	22.5	572	0.015	0.38	6	152	100	100/Bag	
AS2259	304 SS	0.177	4.5	29	737	0.015	0.38	8	203	100	100/Bag	
AS4219	316 SS	0.177	4.5	7	165	0.015	0.38	1	25	100	100/Bag	
AS4229	316 SS	0.177	4.5	10	254	0.015	0.38	2	51	100	100/Bag	
AS4239	316 SS	0.177	4.5	16	406	0.015	0.38	4	102	100	100/Bag	
AS4249	316 SS	0.177	4.5	22.5	572	0.015	0.38	6	152	100	100/Bag	
AS4259	316 SS	0.177	4.5	29	737	0.015	0.38	8	203	100	100/Bag	

MULTI-LOK TIES



BAND-IT® Multi-Lok ties offer a high strength plus vibration resistant benefit. This product is a perfect choice for harsh duty or marine environments.

- Self-locking ties
- Two widths - 0.276" (7.01mm) and 0.472" (12.0mm)
- Coated with Nylon 11 or uncoated 316 SS styles available
- Fast, easy application
- Install by hand or with a variety of tools
- Unique high strength multiple locking system

Part No	Material	Width		Length		Thickness (Coated/Un-coated Coated)		Maximum Diameter Single Wrap		Minimum Loop Tensile Strength (Lbs)	Package Quantity	Application Tools	
		In	mm	In	mm	In	mm	In	mm				
Multi-Lok													
Coated		Uncoated											
AE6119	AE6019	316 SS	0.276	7.01	6.0	150	0.018 / 0.011	0.46 / 0.28	1.3	33	250	100/Bag	CB1000 M50389 XE9229
AE6129	AE6029	316 SS	0.276	7.01	9.0	225	0.018 / 0.011	0.46 / 0.28	2.2	57	250	100/Bag	
AE6139	AE6039	316 SS	0.276	7.01	12.0	300	0.018 / 0.011	0.46 / 0.28	3.2	81	250	100/Bag	
AE6149	AE6049	316 SS	0.276	7.01	18.0	450	0.018 / 0.011	0.46 / 0.28	5.1	129	250	100/Bag	
AE6159	AE6059	316 SS	0.276	7.01	24.0	610	0.018 / 0.011	0.46 / 0.28	7.1	180	250	100/Bag	
AE7119	AE7019	316 SS	0.472	12.0	6.0	150	0.018 / 0.011	0.46 / 0.28	1.3	33	415	100/Bag	
AE7129	AE7029	316 SS	0.472	12.0	9.0	225	0.018 / 0.011	0.46 / 0.28	2.2	57	415	100/Bag	
AE7139	AE7039	316 SS	0.472	12.0	12.0	300	0.018 / 0.011	0.46 / 0.28	3.2	81	415	100/Bag	
AE7149	AE7049	316 SS	0.472	12.0	18.0	450	0.018 / 0.011	0.46 / 0.28	5.1	129	415	100/Bag	
AE7159	AE7059	316 SS	0.472	12.0	24.0	610	0.018 / 0.011	0.46 / 0.28	7.1	180	415	100/Bag	



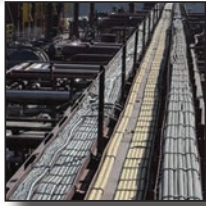
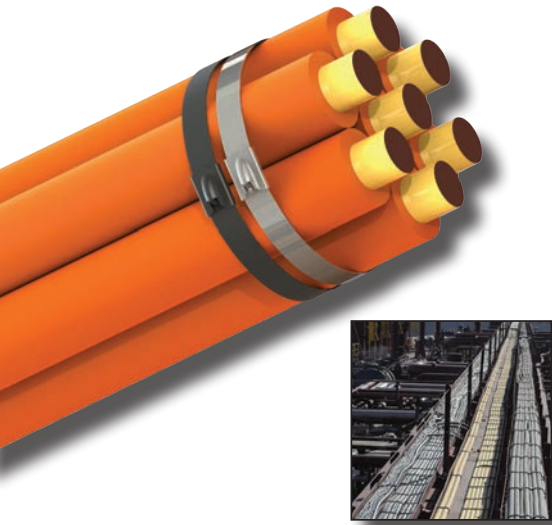
ULTRA-LOK® TIES



- Strongest Tie
- Smooth ID ties with low profile
- Stainless Steel tie with ULTRA-LOK® locking style
- Provides fast, reliable, consistent clamp
- Great for cable bundling

Part No.	Material	Width		Length		Thickness		Maximum Diameter Single Wrap		Minimum Loop Tensile Strength (Lbs)	Package Quantity	Application Tools
		In	mm	In	mm	In	mm	In	mm			
ULTRA-LOK® Ties												
AU2029	201 SS	0.25	6.4	8	203	0.015	0.38	1.5	38	400	100/Bag	A94079
AU2039	201 SS	0.25	6.4	10	254	0.015	0.38	2.5	63	400	100/Bag	
AU2049	201 SS	0.25	6.4	12	305	0.015	0.38	3	76	400	100/Bag	
AU2059	201 SS	0.25	6.4	14	356	0.015	0.38	3.8	96	400	100/Bag	
AU2069	201 SS	0.25	6.4	16	406	0.015	0.38	4.5	114	400	100/Bag	
AU2079	201 SS	0.25	6.4	19	483	0.015	0.38	5.4	137	400	100/Bag	
AU2089	201 SS	0.25	6.4	24	610	0.015	0.38	7	177	400	100/Bag	
AU2099	201 SS	0.25	6.4	29	737	0.015	0.38	8	215	400	100/Bag	
AU2159	201 SS	0.25	6.4	35	889	0.015	0.38	10.5	266	400	100/Bag	

BALL-LOK TIES



Ball-Lok Ties are quick and easy to apply offering a versatile solution for heavy duty applications.

Ball-Lok Ties come with a heavy duty buckle that offers superior corrosive, abrasive and UV resistance performance that makes this product perfect for harsh duty or marine environments.

- Two widths – 0.18" (4.6mm) and 0.31" (7.9mm)
- Self locking design allows fast installation
- Install with tools to ensure uniform tension and clean tail cut-off for safe handling
- Available in Type 304 and Type 316 stainless steels to provide good to excellent corrosion resistance in a wide variety of environments
- Fully coated with black, low smoke, halogen free non-toxic polyester
- This product line is also available with halogen free, low smoke black polyester coating which reduces the risk of cutting or abrading cable insulation or hose coverings

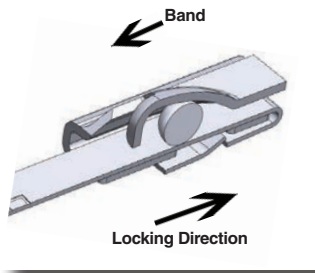
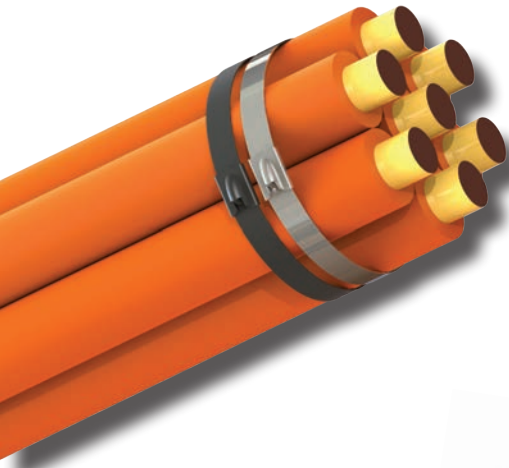
Part Number	Width		Length		Base Material Thickness		Maximum Bundle Diameter		Minimum Loop Tensile Strength (Lbs)	Package Quantity	Application Tools
	In	mm	In	mm	In	mm	In	mm			
Ball-Lok Ties											
304 SS Uncoated Material	316 SS Uncoated Material										
KE1118	KE0118	0.18	4.6	5.9	150	0.010	0.25	1.2	30	200	100/Bag
KE1128	KE0128	0.18	4.6	7.9	201	0.010	0.25	2.0	50	200	100/Bag
KE1138	KE0138	0.18	4.6	10.2	259	0.010	0.25	2.7	69	200	100/Bag
KE1148	KE0148	0.18	4.6	14.2	360	0.010	0.25	4.0	102	200	100/Bag
KE1158	KE0158	0.18	4.6	20.4	520	0.010	0.25	6.0	152	200	100/Bag
KE1168	KE0168	0.18	4.6	26.8	679	0.010	0.25	8.0	203	200	100/Bag
KE1178	KE0178	0.18	4.6	33.0	838	0.010	0.25	10.0	254	200	100/Bag
KE1188	KE0188	0.18	4.6	42.0	1067	0.010	0.25	12.0	305	200	100/Bag
KE1328	KE0328	0.31	7.9	7.9	201	0.010	0.25	2.0	50	300	100/Bag
KE1338	KE0338	0.31	7.9	10.2	259	0.010	0.25	2.7	69	300	100/Bag
KE1348	KE0348	0.31	7.9	14.2	360	0.010	0.25	4.0	102	300	100/Bag
KE1358	KE0358	0.31	7.9	20.4	520	0.010	0.25	6.0	152	300	100/Bag
KE1368	KE0368	0.31	7.9	26.8	679	0.010	0.25	8.0	203	300	100/Bag
KE1378	KE0378	0.31	7.9	33.0	838	0.010	0.25	10.0	254	300	100/Bag
KE1388	KE0388	0.31	7.9	42.0	1067	0.010	0.25	12.0	305	300	100/Bag
316 SS Coated Material											
KE0218		0.18	4.6	5.9	150	0.010	0.25	1.2	30	150	100/Bag
KE0228		0.18	4.6	7.9	201	0.010	0.25	2.0	50	150	100/Bag
KE0238		0.18	4.6	10.2	259	0.010	0.25	2.7	69	150	100/Bag
KE0248		0.18	4.6	14.2	360	0.010	0.25	4.0	102	150	100/Bag
KE0258		0.18	4.6	20.4	520	0.010	0.25	6.0	152	150	100/Bag
KE0268		0.18	4.6	26.8	679	0.010	0.25	8.0	203	150	100/Bag
KE0278		0.18	4.6	33.0	838	0.010	0.25	10.0	254	150	100/Bag
KE0428		0.31	7.9	7.9	201	0.010	0.25	2.0	50	175	100/Bag
KE0438		0.31	7.9	10.2	259	0.010	0.25	2.7	69	175	100/Bag
KE0448		0.31	7.9	14.2	360	0.010	0.25	4.0	102	175	100/Bag
KE0458		0.31	7.9	20.4	520	0.010	0.25	6.0	152	175	100/Bag
KE0468		0.31	7.9	26.8	679	0.010	0.25	8.0	203	175	100/Bag
KE0478		0.31	7.9	33.0	838	0.010	0.25	10.0	254	175	100/Bag

304 **316**



CB1000
K50289
XE9229
or by hand

BALL-LOKT™ TIES



Ball-Lokt™ Ties unique buckle design is the globally accepted industry standard.

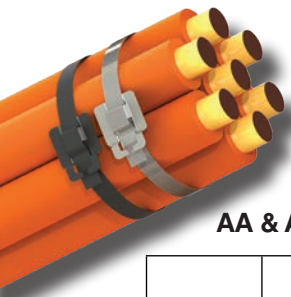
- Four widths – 0.18" (4.6mm), 0.31" (7.9mm), 0.47" (12mm), and 0.59" (15mm) for applications ranging from identification tagging to bundling large cables
- Self locking design allows fast installation
- Installation with hand tool to assure uniform tension and clean tail cut-off for safe handling
- Available in Type 304 and Type 316 stainless steels to provide good to excellent corrosion resistance in a wide variety of environments
- Coated Ball-Lokt™ Ties are fully coated with black epoxy

Part Number	Material	Width		Length		Base Material Thickness		Maximum Diameter Single Wrap		Minimum Loop Tensile Strength lbs	Package Quantity	Application Tools
		In	mm	In	mm	In	mm	In	mm			
Ball-Lok™ Ties												
Coated Uncoated												
	KT4U046-0200	304 SS	0.18	4.6	7.9	200	0.010	0.25	2.0	52	100	100
	KT4U046-0250	304 SS	0.18	4.6	9.8	250	0.010	0.25	2.7	67	100	100
	KT4U046-0350	304 SS	0.18	4.6	13.8	350	0.010	0.25	3.9	99	100	100
	KT4U046-0500	304 SS	0.18	4.6	19.7	500	0.010	0.25	5.8	147	100	100
KT6B046-0200	KT6U046-0200	316 SS	0.18	4.6	7.9	200	0.010	0.25	2.0	52	100	100
KT6B046-0250	KT6U046-0250	316 SS	0.18	4.6	9.8	250	0.010	0.25	2.7	37	100	100
KT6B046-0350	KT6U046-0350	316 SS	0.18	4.6	13.8	350	0.010	0.25	3.9	99	100	100
KT6B046-0500	KT6U046-0500	316 SS	0.18	4.6	19.7	500	0.010	0.25	5.8	147	100	100
	KT4U078-0200	304 SS	0.31	7.9	7.9	200	0.010	0.25	2.0	52	175	100
	KT4U078-0250	304 SS	0.31	7.9	9.8	250	0.010	0.25	2.7	67	175	100
	KT4U078-0350	304 SS	0.31	7.9	13.8	350	0.010	0.25	3.9	99	175	100
	KT4U078-0500	304 SS	0.31	7.9	19.7	500	0.010	0.25	5.8	147	175	100
	KT4U078-0600	304 SS	0.31	7.9	23.6	600	0.010	0.25	7.0	179	175	100
KT6B078-0200	KT6U078-0200	316 SS	0.31	7.9	7.9	200	0.010	0.25	2.0	52	175	100
KT6B078-0250	KT6U078-0250	316 SS	0.31	7.9	9.8	250	0.010	0.25	2.7	67	175	100
KT6B078-0350	KT6U078-0350	316 SS	0.31	7.9	13.8	350	0.010	0.25	3.9	99	175	100
KT6B078-0500	KT6U078-0500	316 SS	0.31	7.9	19.7	500	0.010	0.25	5.8	147	175	100
KT6B078-0600	KT6U078-0600	316 SS	0.47	12	23.6	600	0.010	0.35	7.0	179	175	100
KT6B120-0450	KT6U120-0450	316 SS	0.47	12	17.7	450	0.014	0.35	5.2	131	250	100
KT6B120-0550	KT6U120-0550	316 SS	0.47	12	21.7	500	0.014	0.35	6.4	163	250	100
KT6B120-0600	KT6U120-0600	316 SS	0.47	12	23.6	600	0.014	0.35	7.0	179	250	100
KT6B150-0500	KT6U150-0500	316 SS	0.59	15	19.7	500	0.014	0.35	5.8	147	325	50
KT6B150-0600	KT6U150-0600	316 SS	0.59	15	23.6	600	0.014	0.35	7.0	179	325	50
KT6B150-0700	KT6U150-0700	316 SS	0.59	15	27.6	700	0.014	0.35	8.3	211	325	50
KT6B150-0750	KT6U150-0750	316 SS	0.59	15	29.5	750	0.014	0.35	9.6	243	325	50
KT6B150-0900	KT6U150-0900	316 SS	0.59	15	35.4	900	0.014	0.35	10.8	274	325	50
KT6B150-1100	KT6U150-1100	316 SS	0.59	15	43.3	1100	0.014	0.35	13.3	338.2	325	50

CB1000
C07569
K50289
XE9229
or by hand



BAND-IT® Reusable AA & AH Ties



- Constructed of 200/300 Stainless Steel (coating is with Nylon 11)
- One-piece construction with unique buckle designs capable of double wrapping for special strength requirements and reliable installation

AA & AH Ties

BAND-IT Ties Coated	BAND-IT Ties Uncoated	Material	Width		Length		Thickness AA Coated		Thickness AH Uncoated		Maximum Diameter Single Wrap		Minimum Loop Tensile Strength (Lbs)	Application Tools
			In	mm	In	mm	In	mm	In	mm	In	mm		
AA Ties	AH Ties													
AA1118	AH1115	200/300 SS	1/4	6.4	6	152	0.026	0.66	0.015	0.38	1.5	38	75/300**	AE2018 AE2009 C07569 or by hand
AA1128	AH1125	200/300 SS	1/4	6.4	9	229	0.026	0.66	0.015	0.38	2.5	63	75/300**	
AA1138	AH1135	200/300 SS	1/4	6.4	12	305	0.026	0.66	0.015	0.38	3.4	86	75/300**	
AA1148	AH1145	200/300 SS	1/4	6.4	18	457	0.026	0.66	0.015	0.38	5.4	137	75/300**	
AA1158	AH1155	200/300 SS	1/4	6.4	24	610	0.026	0.66	0.015	0.38	7.3	185	75/300**	
AA3118	AH3115	200/300 SS	3/8	9.6	6.0	152	0.026	0.66	0.015	0.38	1.5	38	100/500**	
AA3128	AH3125	200/300 SS	3/8	9.6	9	229	0.026	0.66	0.015	0.38	2.5	63	100/500**	
AA3138	AH3135	200/300 SS	3/8	9.6	12.0	305	0.026	0.66	0.015	0.38	3.4	86	100/500**	
AA3148	AH3145	200/300 SS	3/8	9.6	18	457	0.026	0.66	0.015	0.38	5.4	137	100/500**	
AA3158	AH3155	200/300 SS	3/8	9.6	24	610	0.026	0.66	0.015	0.38	7.3	185	100/500**	
AA3168	AH3165	200/300 SS	3/8	9.6	30	762	0.026	0.66	0.015	0.38	9.1	231	100/500**	
AA3178	AH3175	200/300 SS	3/8	9.6	36	914	0.026	0.66	0.015	0.38	11	280	100/500**	
AA8638		200/300 SS	5/8	15.8	12	305	0.044	1.1			3.4	86	200/800**	
AA8648		200/300 SS	5/8	15.8	18	457	0.044	1.1			5.4	137	200/800**	
AA8658		200/300 SS	5/8	15.8	24	610	0.044	1.1			7.3	185	200/800**	
AA8668		200/300 SS	5/8	15.8	30	762	0.044	1.1			9.1	231	200/800**	
AA8678		200/300 SS	5/8	15.8	36	914	0.044	1.1			11	280	200/800**	

Material thickness includes coating **Single / Double Wrapped

BAND-IT® Reusable AE Ties

- Constructed of 316 Stainless Steel with PPA571 coating
- PPA 571 is resistant to stress cracking, adverse weather conditions, detergents, salt spray and typical airborne pollutants
- One-piece construction with unique buckle designs capable of double wrapping for special strength requirements and reliable installation



AE Ties

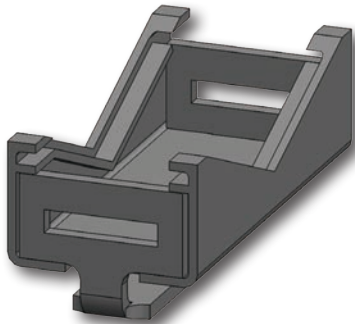
Coated Part No	Uncoated Part No	Material*	Width		Length		Thickness Coated		Maximum Diameter Single Wrap		Minimum Loop Tensile Strength (Lbs)	Package Quantity	Application Tools
			In	mm	In	mm	In	mm	In	mm			
BAND-IT AE Ties													
AE1118	AE1018	316 SS	1/4	6.4	6	152	0.045	1.1	1.5	38	75/300**	100/Bag	AE2018 AE2009 C07569 or by hand
AE1128	AE1028	316 SS	1/4	6.4	9	229	0.045	1.1	2.5	63	75/300**	100/Bag	
AE1138	AE1038	316 SS	1/4	6.4	12	305	0.045	1.1	3.4	86	75/300**	100/Bag	
AE1148	AE1048	316 SS	1/4	6.4	18	457	0.045	1.1	5.4	137	75/300**	100/Bag	
AE1158	AE1058	316 SS	1/4	6.4	24	610	0.045	1.1	7.3	185	75/300**	100/Bag	
AE3118	AE3018	316 SS	3/8	9.6	6	152	0.045	1.1	1.5	38	100/500**	100/Bag	
AE3128	AE3028	316 SS	3/8	9.6	9	229	0.045	1.1	2.5	63	100/500**	100/Bag	
AE3138	AE3038	316 SS	3/8	9.6	12	305	0.045	1.1	3.4	86	100/500**	100/Bag	
AE3148	AE3048	316 SS	3/8	9.6	18	457	0.045	1.1	5.4	137	100/500**	100/Bag	
AE3158	AE3058	316 SS	3/8	9.6	24	610	0.045	1.1	7.3	185	100/500**	100/Bag	
AE3168	AE3068	316 SS	3/8	9.6	30	762	0.045	1.1	9.1	231	100/500**	100/Bag	
AE3178	AE3078	316 SS	3/8	9.6	36	914	0.045	1.1	11	280	100/500**	100/Bag	

*Material thickness includes coating

**Single / Double Wrapped



SIGNFIX®



SX0220-100
Universal Channel Clamp

SIGNFIX® Modular Sign Support Systems

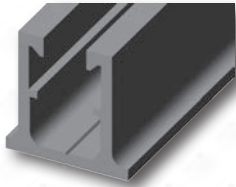
SIGNFIX® is recognized by sign fabricators as a quicker, easier and cost effective method to mount all sizes of signs to any size or shape of pole.

Universal Channel Clamp

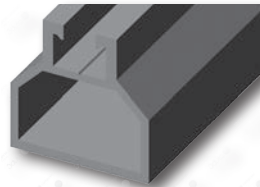
- Compatible with all SIGNFIX® Channel Extrusions
- During installation, the assembly becomes fully adjustable to any size or style sign post when used with BAND-IT® Band and Buckle or Ultra-Lok® Free End System
- Package Quantity 100

Support Channel Extrusions

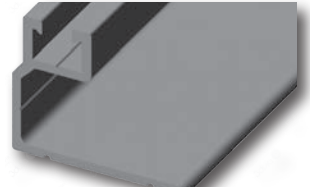
For mounting and stiffening any size sign. SIGNFIX® Channel Extrusions have identical configurations allowing the use of all SIGNFIX® hardware with any extrusion.



SX0073-20 Medium
Channel Extrusion



SX0130-6 Large
Channel Extrusion



SX0090-8 Large Corner Angle
Channel Extrusion



Stainless Steel / Aluminum Cantilever Arms

The SIGNFIX® Cantilever arms provide full-length sign support for sign lengths up to 72" (or 9.5 square feet of surface area) and 0.125" thick, while meeting 80MPH wind load requirements. SIGNFIX® Cantilever Arms provide improved bi-directional visibility and require less maintenance.

Short Length Cantilever Arms

- SX0405 Length: 18"
- SX0406 Length: 24"
- SX0407 Length: 30"

Standard Length Cantilever Arms

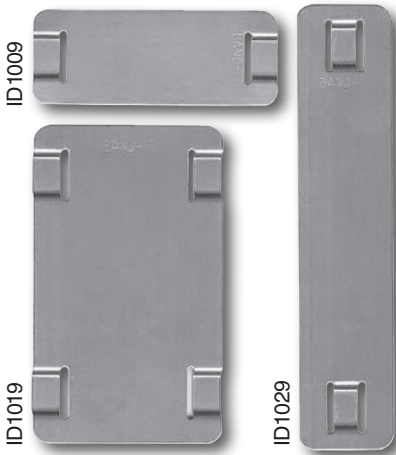
- SX0408 Length: 36"
- SX0409 Length: 42"
- SX0410 Length: 48"

Extended Length Cantilever Arms

- SX0331 Length: 54"
- SX0332 Length: 60"
- SX0333 Length: 66"
- SX0334 Length: 72"

Identification Systems

Print your own tags on 304 or 316 stainless steel and apply with Tie-Lok® Ties. ID tag imprinter is available with a choice of character sizes. Imprinter with character wheel weighs 29.5 lbs (13.4kg).

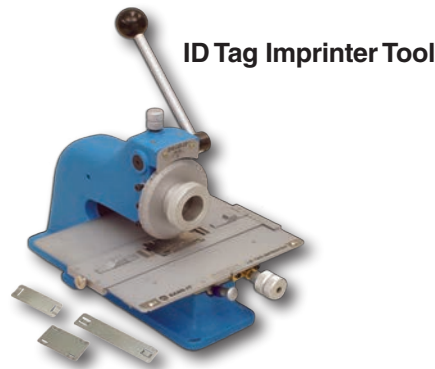


Tags

Part No.	Material	Height		Length		Thickness		Package Weight		Package Quantity
		in	mm	in	mm	in	cm	in	mm	
ID Tags										
ID1009	304 SS	.75	19	2.0	50.8	.015	.38	.5	.2	100/Box
ID1019	304 SS	.75	19	3.5	88.9	.015	.38	.8	.4	100/Box
ID1029	304 SS	1.5	38.1	2.5	63.5	.015	.38	1.2	.6	100/Box
ID4409	316 SS	.75	19	2.0	50.8	.015	.38	.5	.2	100/Box
ID4419	316 SS	.75	19	3.5	88.9	.015	.38	.8	.4	100/Box
ID4429	316 SS	1.5	38.1	2.5	63.5	.015	.38	1.2	.6	100/Box
Custom Embossed Tags*										
ID1039	304 SS	.75	19	2.0	50.8	.015	.38	.1	.1	each
ID1049	304 SS	.75	19	3.5	88.9	.015	.38	.1	.1	each
ID1059	304 SS	1.5	38.1	2.5	63.5	.015	.38	.2	.1	each
ID4609	316 SS	.75	19	2.0	50.8	.015	.38	.1	.1	each
ID4619	316 SS	.75	19	3.5	88.9	.015	.38	.1	.1	each
ID4629	316 SS	1.5	38.1	2.5	63.5	.015	.38	.2	.1	each

* Custom embossed tags available with 1/8" lettering only.

Stainless Steel Tagging System



ID Tag Imprinter Tool

Optional Letter Dial Kits

Part No.	Tool supplied with:
ID2006	3/32" character wheel
ID2026	1/16" character wheel
ID2036	1/8" character wheel
ID2046	3/16" character wheel
ID2056	1/4" character wheel

Part No.	Kit supplied with:
ID2816	1/16" character wheel
ID2826	1/8" character wheel
ID2836	3/16" character wheel
ID2846	1/4" character wheel
ID2906	3/32" character wheel

ID2859 Guide Accessory: Allows imprinting on SS Bands up to 3/4" X 0.030".



ID3009 ID Kit

Identification Kit

The BAND-IT ID Kit comes with an assortment of blank ID tags to use with the ID Tagging Systems. Includes various Tie-Lok Ties and Tie-Lok tool to fasten tags to items. Total weight is 22.7 lbs, 10.3 Kg.

Kit Contains: 1-A92079, 2-ID1029, 1-ID1019, 1-ID1009, 1-AS2119, 2-AS2129, 1-AS2139



ID4002 SS Embossing System

Stainless Steel Tape Embossing System

With the portable tape embossing tool and a roll of 304 stainless steel tape, you can quickly and easily produce I.D. tags with 3/16" letter size which can be attached with your choice of BAND-IT® ties.

Replacement Rolls: ID4059 - 1/2" X 21' - 2 pack.



Part No.	Description	Package Weight		Package Quantity
		in	mm	
Embossing System				
ID4002	SS Tape Embossing Tool Includes 2 rolls of SS tape.	2.6	1.2	each
ID4059	304 SS Tape Roll for Embossing Tool, 1/2" x 21' x .005"	0.2	0.4	each

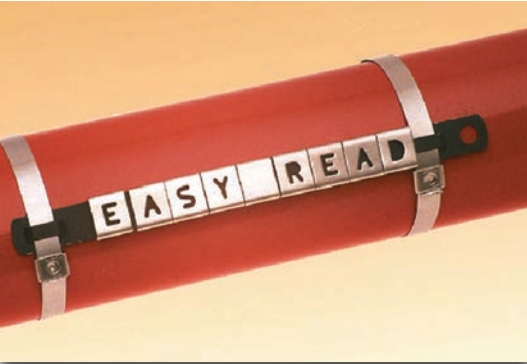
Easy Read Identification



**AE0609-100
Easy Read Kit**

The kit comes in a convenient carrying case weighing 19.5 lbs and contains 100 of each character and carriers.

Easy Read on Carriers



Easy Read on Ties



EASY READ characters slide onto any 1/4" - 3/8" tie.

- BAND-IT EASY READ letters, numbers and are symbols made from type 316 SS
- Slide directly onto Easy Carriers or cable ties to create a self-contained wrap tag
- Easy to read in dim light and inaccessible places
- Characters sold individually in bags of 100 pcs

Easy Read Characters

Part No.	Description	Package Weight		Package Quantity
		Lbs	Kg	
Easy Read Characters				
AE0109	EASY A	0.3	0.2	100/Bag
AE0119	EASY B	0.3	0.2	100/Bag
AE0129	EASY C	0.3	0.2	100/Bag
AE0139	EASY D	0.3	0.2	100/Bag
AE0149	EASY E	0.3	0.2	100/Bag
AE0159	EASY F	0.3	0.2	100/Bag
AE0169	EASY G	0.3	0.2	100/Bag
AE0179	EASY H	0.3	0.2	100/Bag
AE0189	EASY I, 1	0.3	0.2	100/Bag
AE0199	EASY J	0.3	0.2	100/Bag
AE0209	EASY K	0.3	0.2	100/Bag
AE0219	EASY L, 7	0.3	0.2	100/Bag
AE0229	EASY M, W	0.3	0.2	100/Bag
AE0239	EASY N	0.3	0.2	100/Bag
AE0249	EASY O	0.3	0.2	100/Bag
AE0259	EASY P	0.3	0.2	100/Bag
AE0269	EASY Q	0.3	0.2	100/Bag
AE0279	EASY R	0.3	0.2	100/Bag
AE0289	EASY S	0.3	0.2	100/Bag
AE0299	EASY T	0.3	0.2	100/Bag
AE0309	EASY U	0.3	0.2	100/Bag
AE0319	EASY V	0.3	0.2	100/Bag
AE0329	EASY X	0.3	0.2	100/Bag
AE0339	EASY Y	0.3	0.2	100/Bag
AE0349	EASY Z	0.3	0.2	100/Bag
AE0379	EASY 2	0.3	0.2	100/Bag
AE0389	EASY 3	0.3	0.2	100/Bag
AE0399	EASY 4	0.3	0.2	100/Bag
AE0409	EASY 5	0.3	0.2	100/Bag
AE0419	EASY 6, 9	0.3	0.2	100/Bag
AE0429	EASY 8	0.3	0.2	100/Bag
AE0359	EASY Minus/Hyphen	0.3	0.2	100/Bag
AE0369	EASY Blank	0.3	0.2	100/Bag
AE0469	EASY Plus +	0.3	0.2	100/Bag
AE0479	EASY Earth	0.3	0.2	100/Bag
AE0489	EASY Sine ~	0.3	0.2	100/Bag
AE0499	EASY Slash /	0.3	0.2	100/Bag



Apply EASY READ Characters with these 1/4" - 3/8" products:

- Carriers
- Coated BAND-IT® Ties
- Coated Ball-Lok Ties
- Coated Ball-Lokt™ Ties
- Coated Multi-Lok Ties

Easy Carriers

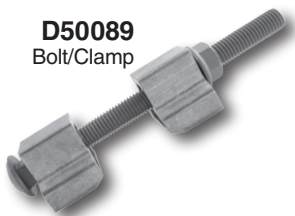
Part No.	Description	Width		Length		Package Weight		Package Quantity
		in	mm	in	mm	in	cm	
Easy Carriers								
AE0439	EASY Carrier 6	0.3	10	3.6	93	0.8	0.4	100/Bag
AE0449	EASY Carrier 10	0.3	10	5.1	131	1.3	0.6	100/Bag
AE0459	EASY Carrier 16	0.3	10	7.3	188	1.5	0.7	100/Bag

Easy Carriers are available in black Nylon 11 coated Stainless Steel only.

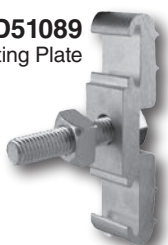
Mounting Hardware

Engineered to achieve a strong and secure grip on all components, provides superior corrosion resistance, and will sustain the hold in high vibration environments while keeping the support system compact.

- Specially designed reinforced SIGNFIX® Channel extrusions
- Convenient attachment methods
- Hex head bolts with metal and fiber washer, no nuts required
- Applied with BAND-IT® banding products
- Banding size may vary depending on application. Please contact your BAND-IT® representative for further details



D50089
Bolt/Clamp



D51089
Mounting Plate



D04099
Signal Mount,
1-1/2" NPT



D04599
Narrow Back Signal
Mount 1-1/2" NPT



Part No.	Material	Description	Package Quantity	Package Weight	
				Lbs	Kg
Bolt / Clamp					
D50089	Aluminum*	Bolt/clamp. Use with maxium 3/4" width band.	50/Box	23.7	10.8
D50489	Aluminum*	Bolt/clamp. Use with maxium 1-1/4" width band.	25/Box	33.0	15.0
D51089	Aluminum	1-1/2" (3.81 mm) x 4-3/4" (120.7 mm) with a 2" long 5/8" plated bolt.	25/Box	14.9	6.8
Mounting Plates					
D51289	Aluminum	1-1/2" (3.81 mm) x 5-1/4" (133.3 mm) with a 2" long 5/8" plated bolt.	25/Box	21.0	9.5
D51389	Aluminum	1-1/2" (3.81 mm) x 5-1/4" (133.3 mm) with a 3" long 5/8" plated bolt.	25/Box	21.0	9.5
D04099	Aluminum	Signal Mount, 1-1/2" NPT	25/Box	19.4	8.8
Signal Mount					
D04599	Aluminum	Narrow Back Signal Mount, 1-1/2" NPT	25/Box	18.3	8.3

*Bolt is a plated carriabe bolt

Mounting Brackets

Used to mount traffic signs, security devices, and enclosures. Designed to withstand wind vibration with reinforced ribs, and applied with BAND-IT® Band and Buckles, VALU-STRAP™, VALU-STRAP PLUS™, BANDFAST®, or the ULTRA-LOK® Systems.

Part No.	Material	Description	Package Quantity	Package Weight	
				Lbs	Kg
Mounting Brackets					
D00189	200/300SS	Single bolt straight leg, bracket with 304SS bolt, washer and fiber washer. 3/4" slot.	50/Box	7.0	3.2
D00299	200/300SS	5/6"-18x3/4" hex head SS Bolt, SS washer and fiber washer.	50/Box	1.3	0.6
D00499	200/300SS	Single bolt straight leg, bracket only. 3/4" slot.	50/Box	5.6	2.6
D00799	200/300SS	L-Mount, right angle bracket	50/Box	4.4	2.0
D00889	200/300SS	2 bolt straight leg, bracket with SS washer and fiber washer. 3/4" slot.	50/Box	9.2	4.2
D00999	200/300SS	2 bolt straight leg, bracket only 3/4" slot.	50/Box	7.1	3.2
D02189	200/300SS	Single bolt flared leg, bracket with SS bolt, SS washer and fiber washer. 3/4" slot.	50/Box	7.0	3.2
D02299	200/300SS	Single bolt flared leg, bracket only. 3/4" slot.	50/Box	5.5	2.5
D30288	200/300SS	5/16"-24 x 1/2" Hex Head SS bolt, washer and fiber washer.	50/Box	1.0	0.5
D31099	200/300SS	Flared leg mini-bracket with 304SS bolt and fiber washer. 1/2" slot.	50/Box	3.0	1.3
D31599	200/300SS	Straight leg mini-bracket with 304SS bolt and fiber washer. 1/2" slot.	50/Box	3.0	1.3



D31099 Flared Leg Mini-Brack-It

D31599 Straight Leg Mini-Brack-It

D02189 Single Bolt Flared leg

D00189 Single Bolt Straight Leg

D00889 2 Bolt Straight Leg

D00799 L-Mount Right Angle Brack-It

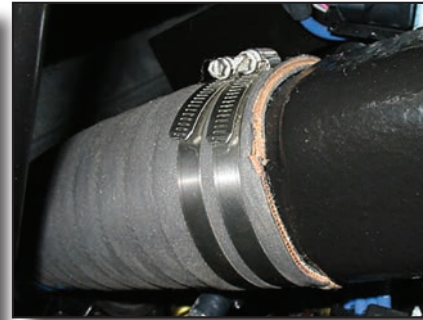
Adjustable Clamping Systems



Worm Gear Clamping System

BAND-IT's 5/16" (7.9mm) 9/16" (14.3mm) wide Stainless Steel Worm Gear Clamps offer superior corrosion resistance across a wide range of applications and industries. These reusable clamps have a smooth inside diameter that provide 360 degrees of contact and require no special tools for installation. Only a flat head screwdriver or a 5/16" hex nut driver is needed.

- 304 Stainless Steel Band
- Smooth inside diameter
- No special tools required
- 22 standard sizes available



301SS Part No.	Width		Thickness		Inside Diameter Min		Inside Diameter Max		Package Weight		Package Quantity	Application Tools
	In	mm	In	mm	In	mm	In	mm	Lbs	Kg		
Worm Gear Clamps												
V20299	5/16	7.9	.021	0.58	0.22	6	0.63	16	0.51	0.26	10/Box	Flat Head Screwdriver 5/16" Nut Driver
V20399	5/16	7.9	.021	0.58	0.31	8	0.88	22	0.60	0.27	10/Box	
V00699	9/16	14.2	0.23	0.58	0.37	10	0.87	22	0.52	0.23	10/Box	
V00899	9/16	14.2	0.23	0.58	0.43	11	1.00	25	0.52	0.23	10/Box	
V01099	9/16	14.2	0.23	0.58	0.50	13	1.12	28	0.54	0.24	10/Box	
V01299	9/16	14.2	0.23	0.58	0.50	13	1.25	32	0.55	0.25	10/Box	
V01699	9/16	14.2	0.23	0.58	0.75	19	1.50	38	0.60	0.27	10/Box	
V02099	9/16	14.2	0.23	0.58	0.87	22	1.75	44	0.65	0.29	10/Box	
V02499	9/16	14.2	0.23	0.58	1.12	28	2.00	51	0.65	0.29	10/Box	
V02899	9/16	14.2	0.23	0.58	1.12	28	2.25	57	0.70	0.32	10/Box	
V03299	9/16	14.2	0.23	0.58	1.62	41	2.50	64	0.73	0.33	10/Box	
V03699	9/16	14.2	0.23	0.58	1.87	48	2.75	70	0.80	0.36	10/Box	
V04099	9/16	14.2	0.23	0.58	2.12	54	3.00	76	0.80	0.36	10/Box	
V04499	9/16	14.2	0.23	0.58	2.31	59	3.25	83	0.84	0.38	10/Box	
V04899	9/16	14.2	0.23	0.58	2.62	67	3.50	89	0.85	0.38	10/Box	
V05299	9/16	14.2	0.23	0.58	2.87	73	3.75	95	0.90	0.40	10/Box	
V05699	9/16	14.2	0.23	0.58	3.12	79	4.00	102	0.91	0.40	10/Box	
V06499	9/16	14.2	0.23	0.58	3.50	89	4.50	114	1.24	0.56	10/Box	
V07299	9/16	14.2	0.23	0.58	4.00	102	5.00	127	1.30	0.59	10/Box	
V08099	9/16	14.2	0.23	0.58	4.50	114	5.50	140	1.36	0.61	10/Box	
V08899	9/16	14.2	0.23	0.58	5.12	130	6.00	152	1.40	0.63	10/Box	
V10499	9/16	14.2	0.23	0.58	6.12	156	7.00	178	1.51	0.68	10/Box	

Adjustable Clamping Systems



Scru-Band Rack and Housing

Scru-Band Clamping Systems

BAND-IT Scru-Seal Kit uses a rack and pinion system allowing the user to make a clamp in any size. Kit offers complete flexibility for use in almost any application. Form clamps of any diameter from continuous roll of band and tension using only a screwdriver.

Part No.	Material	Description	Package Weight		Package Quantity	Application Tools	
			lbs	Kg			
Scru-Band Clamping System							
M15099	SS	Scru-Band Housing, 301 SS-Screw 410 SS	2.8	1.3	100/box	Flat Head Screwdriver	
M15599	SS	Scru-Band Housing, 301 SS-Screw 410 SS	0.7	0.3	25/box		
M15199	SS	Scru-Band, 430SS 3/8" (9.5mm) x .025" (30.5M) (.64mm)	3.4	1.6	100'/roll		
Kits - Everything you need in a single package							
M15699	SS	Scru-Band Kit includes: 100' of Scru-Band, 25 housings, 25 slotted screws	4.0	1.8	each		
M15799	SS	Scru-Band Kit includes: 50' of Scru-Band, 10 housings, 10 slotted screws	2.1	1.0	each		
M15899	SS	Each Pak Includes: 10' of Scru-Band, 5 housings, 5 slotted screws	4.4	2.0	10 paks/box		

Designed for light duty applications.



Scru-Band Kit
M15699, M15799



Scru-Band Pak
M15899 (Shipped as 10 pack)

Scru-Seal Clamping Systems

A rack and pinion system used with band to create any size clamp. Components separately packaged for flexibility.

Part No.	Material	Description	Package Weight		Package Quantity	Application Tools
			lbs	Kg		
Scru-Seal Clamping System						
M21199	SS	10 Scru-Seal racks and 10 Housings	0.7	0.3	10/box	Flat Head Screwdriver
C13399	SS	VALU-STRAP™ Band, 3/8" x 0.015" x 100'	2.2	1.0	100'/roll	
C13499	SS	VALU-STRAP™ Band, 1/2" x 0.015" x 100'	2.9	1.3	100'/roll	5/16" Nut Driver
M21199-25	SS	25 Scru-Seal racks and 25 Housings	1.7	0.7	25/box	
M21199-100	SS	100 Scru-Seal racks and 100 Housings	7.0	3.1	100/box	
Kits - Everything you need in a single package						
M21099	SS	Scru-Seal Kit includes: 25 Scru-Seal racks, 25 housings, VALU-STRAP™ Band 3/8" x 0.015" x 100'	4.3	1.9	each	Flat Head Screwdriver
M21899	SS	Each Clamp Pak includes: 3 Scru-Seal racks, 3 housings, VALU-STRAP™ Band 3/8" x 0.015" x 10'	5.0	2.3	10 paks/box	5/16" Nut Driver

Designed for light duty applications.



Scru-Seal Kit with VALU-STRAP™
M21099



Clamp-Pak
M21899



Scru-Seal Rack & Housing

HAND TOOLS

C00169 Standard Banding Tool



Use with

- Band & Buckle
- BAND-FAST®

Junior Adapters Below

J05069 Junior® Heavy Duty Adapter



Use with

- BAND-IT® Tool on the BAND-IT® Junior® Smooth ID Preformed Clamps

J00169 Junior® Clamp Adapter



Use with

- BAND-IT® Tool on the BAND-IT® Junior® Smooth ID Preformed Clamps

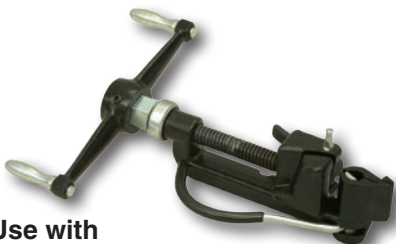
C00269 Junior® Preformed Clamp Tool



Use with

- BAND-IT® Junior® Smooth ID Preformed Clamps

C00369 Heavy Duty Banding Tool



Use with

- BAND-FAST® & Roll Band

BAND-IT's standard tool with an adapter built in for Junior® Smooth ID clamps. For use on band widths of 1/4" to 3/4" (.015" - .030" thickness).

Replacement Parts:

- C02499 - Slide Block Assembly
- C02499 - Kit, Gripper Assembly
- C05887 - Kit, Cutter Bar Assembly
- C00689 - Kit, Tension Handle, Bearing and Screw

Used only with the C00169 BAND-IT® Tool to install Junior® Smooth I.D. Preformed Clamps for hose assembly when a vise is not available.

Replacement Parts:

- J00587 - Shear Hook
- J93099 - Junior® Lock Universal Cutter Blade Kit

Replacement Parts:

- J00587 - Shear Hook
- J93099 - Junior® Lock Universal Cutter Blade Kit

Use to apply Junior® Preformed clamps and BAND-IT® Junior® Smooth ID Clamps. Tool performs best when used in a vice on band widths over 1/2".

Replacement Parts:

- C00689 - Tension Handle and Screw Kit
- C01899 - Gripper Assembly Kit
- J01499 - Handle Assembly Jr. Adapter
- J93099 - Cutter Blade Kit

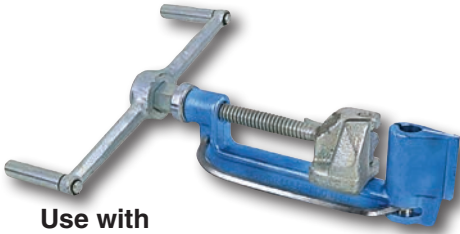
The C00369 is a heavy duty version of the C00169 tool. Primarily designed for thicker materials and is not recommended for band widths 0.015" or 0.020". This tool can be used for 0.044" X 3/4" wide Giant Band. Tool will tension beyond the limits of the 3300 lbs of force to yield 3/4" wide 201SS Giant Band.

Replacement Parts:

- C04799 - Spin Grip, External Retaining Ring, Tension Handle Bushing, Tension Handle, Set Screw, and Thrust Bearing
- C06799 - Tension Screw 5/8", Eccentric Lever Pivot Pin, Gripper Spring, Band Gripper, and Slide Block
- C05887 - Cutter Bar Handle, Vinyl Grip, Set Screw, and Cutter Bar

HAND TOOLS

G40269 Giant Banding Tool



Use with

- BAND-FAST® & Roll Band

The G40269 is the strongest BAND-IT hand tool. This tool is designed for use with ¾", 1", 1-¼" width X .044" thick Giant Band & Buckle. Tool will tension beyond the limits of the 5500 lbs of force to yield 201 Stainless Steel Giant Band material.

Replacement Parts:

- G42487 - Slide Block Assembly
- G42087 - Tension Handle Assembly
- G42287 - Cutter Bar Assembly

T30069 Center Punch Tool



Used to apply BAND-IT® 3/8" and 5/8" Center Punch Clamps, 201 Stainless Steel Band and Galvanized Carbon Steel Clamps.

Replacement Parts:

- T28088 - Head Assembly
- T28888 - Nose and Slide Assembly
- T32190 - Punch Kit
- T32290 - Gripper Kit

S03869 Center Punch Tool



Easy to use ratchet drive can be switched to use either the 3/8" wide or 5/8" wide slots of this pocket style tool.

C08569 Bantam Strapping Tool



The C08569 Bantam Strapping Tool is a light duty ratchet tool designed for for palletizing and packaging. Similar to the C07569.

C40099 Ratchet Tool



The C40099 Ratchet Tool is a ratchet tool designed for the band and buckle systems excelling in palletizing and general banding. This tool works best on coated or painted band because of its gripping mechanism.

J02069 Pok-It II Tool with Cutter



The J02069 Pok-It II Tool with Cutter has a compact design and ease of use to install 3/16" – 3/8" band and buckle and BAND-IT Jr. clamps. The ratchet design enables a quick strong tensioning for narrow band clamps.

HAND TOOLS

CB1000

Use with

- Ball-Lok Ties
- Ball-Lokt™ Ties
- Multi-Lok Ties



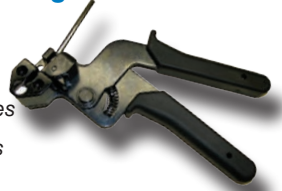
BAND-IT® CB1000 cable bundling tool is very compact and rugged! It's the ideal hand tool for installing heavy duty self locking stainless steel cable ties up to 16mm in size.

- Heavy duty 4140 Chromoly Construction can tension up to 1,000lbs
- Nose design gives flush cut-off
- X-Style winding mandrel allows easy clamp tail insertion
- Ergonomically designed handle provides greater comfort
- 3 way handle adjusts for one or two-handed tensioning

XE9229 Tensioning Tool

Use with

- Ball-Lok Ties
- Ball-Lokt™ Ties
- Multi-Lok Ties



Tensions and cuts off Ball-Lok, Ball-Lokt™ and Multi-Lok ties up to 12mm wide regardless of material or coating.

C07569 Bantam Tool

Use with

- BAND-IT Ties
- PPA Coated Band
- Ball-Lok Ties
- Ball-Lokt™ Ties
- BAND-FAST®



BAND-IT® Bantam tool is a compact, lightweight, ratchet action tool with built in cutter.

- 3 way handle adjusts for one or two-handed tensioning
- Zinc plated for corrosion resistance
- Useful in tight areas with minimal access
- Designed for easy loading and removing of material
- Use with coated and uncoated BAND-IT® ties or Coated Band up to 19mm wide.

K50289 Ball-Lok Tool

Use with

- Ball-Lok Ties
- Ball-Lokt™ Ties



Install Ball-Lok and Ball-Lokt™ stainless steel ties (up to 7.9mm wide) quickly and easily with the lightweight, portable Ball-Lok tool with adjustable tension, side loading and automatic tail cut-off.

M50389 Multi-Lok Hand Tool

Use with

- Multi-Lok Ties



Quickly, easily and consistently applies any size Multi-Lok ties. Simply adjust the Multi-Lok tool for the desired tension, slip the Multi-Lok in the slot, or side load, and squeeze the handle. When the proper tension is reached, the Multi-Lok tool automatically cuts the tail off flush with the buckle.

HAND TOOLS

A91079 Mini Tie-Lok II Tool

Use with

- 0.177" wide
(4.5mm)
Mini Tie-Lok® Ties



For applying 0.177" wide smooth ID Mini Tie-Lok® ties for cable bundling, hose bundling and identification tagging. Forms unique dimple lock with a strong locking force and cuts off the excess band flush with top of buckle so the completed lock is smooth and not sharp.

- Forms dimple lock with a strong locking force in excess of 100 pounds (45 Kg)
- Adjustable controlled tension with repeatable results
- Easy to use, lightweight, compact design

A92079 Tie-Lok® II Tool

Use with

- 1/4" wide
(6.35mm)
Tie-Lok® Ties



Applies 1/4" wide smooth ID Tie-Lok® ties used in cable bundling, hose bundling, CV boot installation and identification tagging. Locks tie with the patented Tie-Lok® and cuts off excess band flush with top of buckle so the completed lock is smooth and not sharp.

- Forms dimple lock with a strong locking force in excess of 250 pounds (130 Kg)
- Adjustable controlled tension with repeatable results
- Easy to use, lightweight, compact design

TL3800 Tie-Lok® Tool

Use with

- Tie-Lok®
Stainless Steel
Ties in 3/8" width
(9.53mm) only



The TL3800 Tie-Lok® tool is specifically designed to install 3/8" wide Tie-Lok® stainless steel ties. Repeatable, controlled tie tension. Punch depth limiter. Light weight, compact design. Cut off produces clean hidden edges.

A94079 ULTRA-LOK® Tool

Use with

- Ultra-Lok® Ties



Applies Smooth ID ULTRA-LOK® ties. Locks tie with patented ULTRA-LOK® cut-off for increased loop tensile strength.

- Tool will tension clamp up to 400lbs of loop tensile strength

AE2009 Tool



The AE2009 hand tool is used for tensioning BAND-IT® cable ties. Use with: BAND-IT Ties, Ball-lok Ties, Ball-Lokt™ Ties and Multi-Lok Ties.

AE2019 Tool



The AE2019 Tensioning Hook is used for tensioning BAND-IT® cable ties. Use with: BAND-IT Ties, Ball-lok Ties, Ball-Lokt™ Ties and Multi-Lok Ties.

POWER TOOLS

UL9010 ULTRA-LOK® Corded Tool



Use with

- Ultra-Lok® Band & Preformed Clamps

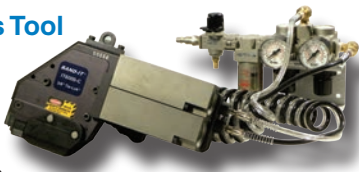
UL4000-D ULTRA-LOK® Cordless Tool



Use with

- Ultra-Lok® Band & Preformed Clamps

IT Series Tool



Use with

- BAND-IT® Tie-Lok® Ties, and Junior® Smooth ID Preformed Clamps

Ideal for hose clamping. Electric ULTRA-LOK® Tool clamps 3/4" or 1/2" ULTRA-LOK® band and ULTRA-LOK® preformed clamps. Designed for consistent repeatable tensioning. Adjustable speed and torque. Clamps can be applied four times faster than conventional clamps. Forms lock under full tension. Shear plate available to convert tool from 3/4" to 1/2" ULTRA-LOK® clamps.

Replacement Parts:

- M03990 - Adapter Clutch
- M09387 - Shear Plate for Installing 1/2" Wide UL Clamps
- M09887 - Shear Plate for Installing 3/4" Wide UL Clamps
- M09787 - Cutter Blade for Installing All UL Clamps
- C23187 - Lubricant for Tension Threads
- UL1219 - Handle Kit

Ideal for mobile installations. Now powered with a Lithium-ion battery, with longer charge and battery life, the UL4000-D battery charge lasts longer with consistent peak performance through the life of the battery.

Replacement Parts:

- M09387 - Shear Plate for Installing 1/2" Wide UL Clamps
- M09887 - Shear Plate for Installing 3/4" Wide UL Clamps
- M09787 - Cutter Blade for Installing All UL Clamps
- C23187 - Lubricant for Tension Threads
- UL1219 - Handle Kit

The IT Series Tool (with air hose and regulator) is a hand held tool used for repeatable high production environments.

- Can be fixtured into production system
- Variety of head configurations that allow installation of
 - 3/16", 1/4" and 3/8" Tie-Lok®
 - 1/4" Universal Clamps
 - 1/4" and 3/8" Jr.® Smooth ID Clamps
- Ergonomic design for ease of use by hand
- Heavy-duty cut-off and tensioning components
- Durable pneumatic system
- Easy to maintain

Available Versions.

- IT0750 For all 3/16" Mini Tie-Lok® Ties
- IT1000 For all 1/4" Tie-Lok® Ties and 1/4" Universal Clamps
- IT2000 For all 1/4" BAND-IT Junior® Clamps
- IT5000 For all 3/8" BAND-IT Junior® Clamps
- IT6000 For all 3/8" Tie-Lok® Ties

POWER TOOLS

S75099 Pneumatic Junior® Clamp Application Tool



Use with

- *BAND-IT® Junior® Smooth ID Preformed Clamps*

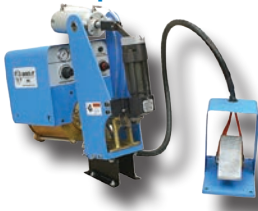
S35099 Pneumatic Junior® Clamp Automatic Air Tool



Use with

- *BAND-IT® Junior® Smooth ID Preformed Clamps*

SM1700 Pneumatic Automatic Center Punch Clamp Air Tool



Use with

- *BAND-IT® Center Punch Preformed Clamps*

The "Standard Air Tool!" The foot controlled standard air tool applies the complete range of BAND-IT Junior® and Junior® Smooth ID preformed clamps.

Replacement Parts:

- S45799 - Band Gripper Kit
- J93099 - Junior Lock Universal Cutter Blade Kit
- J00587 - Shear Hook
- S45087 - Tripper Plate

For high volume production clamping of all widths and diameter sizes of BAND-IT Junior® Smooth ID and Junior® preformed clamps. Automatically tensions and cuts off clamp tail after roll-up and lock.

Replacement Parts:

- S45799 - Band Gripper Kit
- J93099 - Junior Lock Universal Cutter Blade Kit
- S45087 - Tripper Plate

Designed to install BAND-IT® Center Punch 5/8" wide preformed clamps, made from 201 Stainless Steel and Galvanized Carbon Steel. Automatically tensions and cuts off clamp tail.

Replacement Parts:

- S45199 - CP Band Gripper Kit
- M17799 - CP Cutter Blade Kit
- S45087 - Tripper Plate

BAND-IT® Electrical Product Solutions

Product Matrix

Performance Characteristics

Speedy Install	Loop Tensile Strength	Salt Spray Resistance	UV Resistance	LSF / Zero Halogen	Temperature Extremes	Long Service Life	Vibration Resistance	Chemical Resistance
----------------	-----------------------	-----------------------	---------------	--------------------	----------------------	-------------------	----------------------	---------------------

Performance Score

Scale - Least Suitable → Most Suitable

1 2 3 4 5 **Multiple** → M

		1	2	3	4	5	Multiple	M			
Ball-Lok Ties	Fully Coated 316SS (Polyester)	5	4	5	4	5	3	4	2	3	35
	Uncoated 316SS	5	4	5	5	5	5	5	2	5	41
	Uncoated 304SS	5	4	3	5	5	5	5	2	4	38
Smooth ID Ball-Lok Ties	Fully Coated 316SS (Epoxy)	5	3	5	2	5	2	3	2	2	29
	Uncoated 316SS	5	3	5	5	5	5	5	2	5	40
	Uncoated 304SS	5	3	3	5	5	5	5	2	4	37
Ball-Lokt Ties	Fully Coated 316SS (Epoxy)	5	3	5	2	5	2	3	2	2	29
	Uncoated 316SS	5	3	5	5	5	5	5	2	5	40
	Uncoated 304SS	5	3	3	5	5	5	5	2	4	37
Multi-Lok Ties	Fully Coated (Nylon 11) 316SS	4	2	5	4	5	2	4	4	2	32
	Uncoated 316SS	4	2	5	5	5	5	5	4	5	40
BAND-IT AE Ties	Fully Coated PPA571 316SS	3	3	5	4	5	2	4	5	3	34
	Uncoated 316SS	3	3	5	5	5	5	5	5	5	41
Tie-Lok Ties (Standard & Mini)	316SS	4	2	5	5	5	5	5	5	5	41
	304SS	4	2	3	5	5	5	5	5	3	37
316SS PPS Coated Stainless Steel Band	Fully Coated PPA571 316SS	2	4	5	4	5	2	4	5	3	34
All Purpose Band	Fully Coated PPA571 316SS	2	4	5	4	5	2	4	4	3	33
	Uncoated 316SS	2	4	5	5	5	5	5	5	5	41
ULTRA-LOK®	1/4 Hard 201 SS	4	5	2	5	5	5	5	5	2	38

Application Match					Description	Approvals & Listings	Page
Marine & Offshore (Outdoor)	Marine, Chemical Plant, Industrial Complex (Indoor)	Utility Pole and Tower	Heavy Mounting Utility Pole and Tower	Mining			
Cable tray Bundling		General Fastening and Mounting					
X	X	X		X	HD Ball-Lok Ties 316SS, 0.010" Coated Black Polyester	UL	8,9
X	X	X		X	HD Ball-Lok Ties 316SS, 0.010"	UL	8,9
	X	X		X	HD Ball-Lok Ties 304SS, 0.010"	UL	8,9
	X			X	Ball-Lok Tie, 316SS, 0.010" (base metal) 0.016" (coated, Nylon 11)	DNV, Lloyds, GL, RMRS, CE	NL
X	X	X		X	Ball-Lok Tie, 316SS, 0.010"	DNV, Lloyds, GL, RMRS, CE	NL
	X	X		X	Ball-Lok Tie, 304SS, 0.010"	DNV, Lloyds, GL, RMRS, CE	NL
	X			X	Ball-Lokt™ Tie, 316SS, 0.010 CTD Black Epoxy	UL, DNV	8,9
X	X	X		X	Ball-Lokt™ Tie, 316SS, 0.010"	UL, DNV	8,9
	X	X		X	Ball-Lokt™ Tie, 304SS, 0.010"	UL, DNV	8,9
X	X	X		X	Multi-Lok Tie, 316SS, 0.011" (base metal) 0.018" (coated, Nylon 11)	DNV, Lloyds, GL, RMRS, CE, UL	11
X	X	X		X	Multi-Lok Tie, 316SS, 0.011" Thickness	DNV, Lloyds, GL, RMRS, CE, UL	11
X	X	X		X	BAND-IT® Tie, 316SS, 0.015" (base metal) 0.040" (PPA 571)	DNV, Lloyds, GL, RMRS, CE	12
X	X	X		X	BAND-IT® Tie, 316SS, 0.015" base metal Thickness	DNV, Lloyds, GL, RMRS, CE	12
X	X	X		X	Tie-Lok® Tie SID, 316SS, 0.015" Thickness	UL, DNV(UK), GL(UK), Lloyds(UK), RMRS(UK)	10
	X	X		X	Tie-Lok® Tie, SID, 304SS, 0.020" Thickness	UL, DNV(UK), GL(UK), Lloyds(UK), RMRS(UK)	10
X	X	X		X	Coated Band, 316SS, 0.015" (base metal) 0.045" (coated, PPA571) x 82.5'	DNV, Lloyds, ABS, RMRS, CE, GL	13
X	X			X	All Purpose Band, 316SS 0.030" (base metal) 0.050" (CTD, PPA571) x 82.5'	Lloyds, RMRS, GL	13
X	X			X	All Purpose Band, 316SS 0.030" (base metal) 0.050" x 82.5'		13
		X	X	X	Ultra-Lok® Band, 201SS 1/4 Hard		14

BAND-IT Certifications & Approvals



Det Norske Veritas (DNV) DNV Classification is a service which comprises the development of independent technical standards for vessels, the DNV Rules for Classification of Ships, and the verification of compliance with the rules throughout the vessel's life. The scope of Classification includes and requires that specified materials, components and systems intended for the vessel are certified in accordance with the DNV rules.

A manufacturer is defined as a company that:

- Manufactures the material/product totally, or
- Performs a part of the production that determines the quality of the material/product, or
- Does the final assembly of the product.

A manufacturer must take and acknowledge the responsibility for the delivered material/product.



American Bureau of Shipping (ABS) A classification sign and construction of new vessels and the integrity of existing vessels and marine structures.



Lloyd's Register Group A maritime classification society and independent risk management organization providing risk assessment and mitigation services and management systems certification. Historically, as Lloyd's Register of Shipping, it was a specifically maritime organization.



Russian Maritime Register of Shipping (RS) The activities of Russian Maritime Register of Shipping (RS) are aimed at providing the safety of navigation, safety of life at sea, security of ships, safe carriage of cargo, environmental safety of ships, prevention of pollution from ships, performance of authorizations issued by Administrations and customers.

RS develops and continually improves the RS rules and guidelines in compliance with requirements of the international standards to ensure the safety at sea and pollution prevention.

The RS task is both to maintain its own quality management system at the highest possible level and to promote also implementation of high technical standards in design of ships, shipbuilding and shipping industry using its unique experience in ensuring maritime safety.



Germanischer Lloyd (GL) A classification society based in the city of Hamburg, Germany. As a technical supervisory organization Germanischer Lloyd conducts safety surveys on more than 7,000 ships with over 79 Mio GT. Its technical and engineering services also include the mitigation of risks and assurance of technical compliance for oil, gas and industrial installations as well as wind energy parks.



Underwriters Laboratories (UL) An independent product safety certification organization that develops standards and test procedures for products, materials, components, assemblies, tools and equipment, chiefly dealing with product safety.

Aramco 9COM BAND-IT® is registered as an Aramco 9COM manufacturer.



ISO TS 16949 ISO/TS 16949 is designed to address quality management in the automotive supply chain. It is based on the eight quality management principles: customer focus, leadership, involvement of people, process approach, system approach to management, continual improvement, fact-based decision making, and mutually beneficial supplier relationships. In addition, ISO/TS 16949 focuses on customer specific requirements.

ISO 14001 The ISO 14000 environmental management standards exist to help organizations (a) minimize how their operations (processes etc.) negatively affect the environment (i.e. cause adverse changes to air, water, or land); (b) comply with applicable laws, regulations, and other environmentally oriented requirements, and (c) continually improve in the above.

ISO 9001 The ISO 9000 family of standards relate to quality management systems and are designed to help organizations ensure they meet the needs of customers and other stakeholders. The standards are published by ISO, the International Organization for Standardization and available through National standards bodies. ISO 9000 deals with the fundamentals of quality management systems, including the eight management principles on which the family of standards is based. ISO 9001 deals with the requirements that organizations wishing to meet the standard have to fulfill.



British Standards Institution (BSI) Is the business standards company that helps organizations all over the world make excellence a habit. We have many varied partners. These include international standards bodies, such as ISO, external consultants who help our clients and professional affiliations.



CE CE marking is a mandatory conformity mark for products placed on the market in the European Economic Area (EEA). With the CE marking on a product the manufacturer ensures that the product conforms with the essential requirements of the applicable EC directives. The letters “CE” stand for “Conformité Européenne” (“European Conformity”).



United States Coast Guard Type approval is the primary process for equipment and materials to receive Coast Guard approval. For equipment or materials to receive Type Approval, they must be demonstrated to comply with the relevant requirements in the regulations, successfully complete the specified tests, and be enrolled in a quality control or follow up program as required.



GOST-R Approval GOST (Russian: ROCT) refers to a set of technical standards maintained by the Euro-Asian Council for Standardization, Metrology and Certification (EASC, a regional standards organization operating under the auspices of the Commonwealth of Independent States (CIS).

Definitions

Corrosion Resistance - The ability of a material to withstand degradation in specific environments.

Loop Tensile Strength - The maximum amount of force, applied radially, an installed clamp/tie will withstand prior to failure.

Nylon 11 - Non-toxic polymer cable tie coating resistant to stress cracking, abrasion, impact, salt spray and typical airborne pollutants. When subjected to fire, this coating is halogen-free and produces low amounts of smoke.

Polyester - A high performance black polyester, non-toxic polymer coating for rolled band resistant to stress cracking, abrasion, impact, salt spray and typical airborne pollutants. When subjected to fire, this coating is halogen free and produces low amounts of smoke.

PPA 571 - A non-toxic polymer coating for rolled band resistant to stress cracking, abrasion, impact, salt spray and typical airborne pollutants. When subjected to fire, this coating is halogen free and produces low amounts of smoke.

Black Epoxy - Resistant to chemical and salt water environments.

Production Tool - Power tools to install band clamps and tie products consistently.

BAND-IT® Metals Data All values in table are reference only.

Material	201 Stainless Steel	201 1/4 Hard	202 Stainless Steel	301 Stainless Steel	302 Stainless Steel	304 Stainless Steel	316 Stainless Steel	317L 1/4 Hard Stainless Steel	321 Stainless Steel	200/300 Series Stainless Steel	Alloy 400	Alloy 625	Titanium GR1	
Specification														
UNS Designation	S20100	S20100	S20200	S30100	S30200	S30400	S31600	S31703	S32100	---	N04400	N06625	R50250	
ASTM	A 666	A 666	A 666	A 666	A 666	A 666	A 666	A 240	A 240	---	B 127	B 443	B 265	
Principal Alloying Elements, %														
C	.015 Max	.015 Max	.015 Max	.15 Max	.15 Max	.08 Max	.08 Max	.03 Max	.08 Max	---	.3 Max	.10 Max	.08 Max	
Mn	5.50 - 7.50	5.50 - 7.50	7.5-10.0	2.0 Max	2.0 Max	2.0 Max	2.0 Max	2.0 Max	2.0 Max	---	2.0 Max	.50 Max	---	
P	.06 Max	.06 Max	.06 Max	.045 Max	.045 Max	.045 Max	.045 Max	.045 Max	.045 Max	---	---	.015 Max	---	
S	.03 Max	.03 Max	.03 Max	.030 Max	.030 Max	.030 Max	.030 Max	.030 Max	.030 Max	---	0.024 Max	.015 Max	---	
Si	.75 Max	.75 Max	.75 Max	1.00 Max	.75 Max	.75 Max	.75 Max	.75 Max	.75 Max	---	0.5 Max	50 Max	---	
Cr	16.0-18.0	16.0-18.0	17.0-19.0	16.0-18.0	17.0-19.0	18.0-20.0	16.0-18.0	18.0-20.0	17.0-19.0	---	---	20.0-23.0	---	
Ni	3.50-5.50	3.50-5.50	4.0-6.0	6.0-8.0	8.0-10.0	8.0-10.5	10.0-14.0	11.0-15.0	9.0-12.0	---	63.0 Min	58.0 Min	---	
N	.25 Max	.25 Max	.25 Max	.10 Max	---	.10 Max	---	.10 Max	.10 Max	---	---	---	.03 Max	
O	---	---	---	---	---	---	---	---	---	---	---	---	.18 Max	
H	---	---	---	---	---	---	---	---	---	---	---	---	.015 Max	
Mo	---	---	---	---	---	---	2.0-3.0	3.0-4.0	---	---	---	8.0-10.0	---	
Cu	---	---	---	---	---	---	---	---	---	---	28.0-34.0	---	---	
Fe	---	---	---	---	---	---	---	---	---	---	2.5 Max	5.0 Max	.20 Max	
Ti	---	---	---	---	---	---	---	---	---	---	---	0.40 Max	Balance	
Zn	---	---	---	---	---	---	---	---	---	---	---	0.40 Max	Balance	
Al	---	---	---	---	---	---	---	---	---	---	---	---	---	
Physical Properties														
Density, Lb/Cu. In.	0.287	0.287	0.287	0.290	0.290	0.290	0.290	0.290	0.286	0.287	0.319	0.305	0.163	
Structure	Austenitic	Austenitic	Austenitic	Austenitic	Austenitic	Austenitic	Austenitic	Austenitic	---	Austenitic	---	---	Alpha	
Melting Range	2550 - 2650°F	2550 - 2650°F	2550 - 2650°F	2550 - 2590°F	2550 - 2590°F	2550 - 2590°F	2550 - 2590°F	2540 - 2630°F	2540 - 2630°F	2550 - 2635°F	2550 - 2650°F	2370 - 2460°F	2500 - 2550°F	2500 - 2550°F
Electrical Properties	Non-Magnetic	Non-Magnetic	Non-Magnetic	Non-Magnetic	Non-Magnetic	Non-Magnetic	Non-Magnetic	Non-Magnetic	Non-Magnetic	Non-Magnetic	Slightly Magnetic	Non-Magnetic	Non-Magnetic	
Mechanical Properties														
Rockwell Hardness	100 Rb Max	---	100 Rb Max	95 Rb Max	92 Rb Max	92 Rb Max	95 Rb Max	95 Rb Max	95 Rb Min	70-95R	68 Rb Max	88-94R	64-70R	
Ultimate Tensile Strength	95,000	125,000	90,000	75,000	75,000	75,000	75,000	115,000	75,000	75,000	70,000	120,000	35,000	
Yield Strength	45,000	75,000	38,000	30,000	30,000	30,000	40,000	75,000	30,000	30,000	28,000	60,000	20,000	
% of Elongation in 2 inches, Min	40	25	40	40	40	40	35	10	40	30	35	30	24	
Corrosion Resistance														
Mild Atmospheric and Fresh Water	Good	Good	Good	Good	Very Good	Very Good	Excellent	Excellent	Excellent	Good	Good	Good	Good	
Industrial Atmosphere	Good	Good	Good	Good	Very Good	Very Good	Very Good	Very Good	Very Good	Good	Good	Good	Good	
Marine Atmosphere	Fair	Fair	Fair	Fair	Good	Good	Very Good	Very Good	Very Good	Fair	Excellent	Excellent	Good	
Salt Water	No	No	No	No	No	No	Good	Good	Good	No	Excellent	Excellent	Good	
Mild Chemical	Fair	Fair	Fair	Fair	Good	Good	Good	Very Good	Good	Fair	Good	Good	Good	
Oxidizing Chemical	Fair	Fair	Fair	Fair	Good	Good	Good	Good	Good	Fair	Good	Good	Excellent	
Reducing Chemical	No	No	No	No	No	No	Good	Good	Good	No	Good	Good	Fair	

BAND-IT® Metals Data All values in table are reference only.

	Titanium GR2	Galvanized Carbon Steel	403 Stainless Steel	Carbon Steel (Magnus)	AL2003	Aluminum 3003	Alloy 27-7	Alloy AL6XN®	Alloy C276	Alloy 2507	UNS S32760	Alloy 2205	Alloy 718	409 Stainless Steel	430 Stainless Steel
	R50400	---	S40300	---	S32003	A93003	S31277	N08367	N10276	S32750	S32760	S32205	N07718	S40900	S43000
	B 265	A 105, A 695	A 176	---	A 240	B 209	A 240	B 688	B 462	A 240	A 240	A 240	B 637	A-240	A-240
	.08 Max	.35 Max	.15 Max	---	.03 Max	---	.5-1.5	.03 Max	.01 Max	.03 Max	.03 Max	.03 Max	.08 Max	.03 Max	0.12 Max
	---	.6-1.05	1.0 Max	---	2.0 Max	1.0-1.5	3.0 Max	---	1.0 Max	1.2 Max	1.0 Max	2.0 Max	.35 Max	1.0 Max	1.00 Max
	---	.04 Max	.04 Max	---	.03 Max	---	.03 Max	.04 Max	.04 Max	0.035 Max	0.03 Max	0.03 Max	.015 Max	0.04 Max	.04 Max
	---	.05 Max	.03 Max	---	.02 Max	---	.01 Max	.03 Max	.03 Max	0.02 Max	0.01 Max	0.02 Max	.015 Max	0.02 Max	.03 Max
	---	.10-.35	.50 Max	---	1.0 Max	.60 Max	.50 Max	1.0 Max	.08 Max	.80 Max	1.00 Max	1.00 Max	.35 Max	1.00 Max	1.00 Max
	---	---	11.5-13.0	---	19.5-22.5	---	20.5-23.0	20.0-22.0	14.5-16.5	24-26.0	24.0-26.0	22.0-23.0	17.0-21.0	10.50-11.75	16.0-18.0
	---	---	.60 Max	---	3.0-4.0	---	26.0-28.0	23.5-25.5	Balance	6.0-8.0	6.0-8.0	4.5-6.5	50.0-55.0	0.5 Max	.75 Max
	.03 Max	---	---	---	.14-.20	---	.3-.4	.18-.25	---	.24-.32	.20-.30	.14-.20	---	---	---
	0.25 Max	---	---	---	---	---	---	---	---	---	---	---	---	---	---
	.015 Max	---	---	---	---	---	---	---	---	---	---	---	---	---	---
	---	---	---	---	1.5-2.0	---	---	6.0-7.0	15.0-17.0	3.0-4.0	3.0-4.0	3.0-3.5	2.8-3.3	---	---
	---	---	---	---	---	.20 Max	---	.75 Max	---	---	---	---	---	---	---
	.30 Max	---	---	---	Balance	.70 Max	Balance	---	4.0-7.0	---	---	---	Balance	---	---
	Balance	---	---	---	---	---	---	---	---	---	---	---	.65-1.15	---	---
	Balance	---	---	---	---	.10 Max	---	---	---	---	---	---	---	---	---
	---	---	---	---	---	Balance	---	---	---	---	---	---	.2-.8	---	---
	0.163	0.283	0.282	---	0.279	0.099	0.290	0.291	0.321	0.282	0.278	0.282	0.296	0.282	0.282
	Alpha	Ferritic	Martensitic	Ferritic	Duplex	---	Austenitic	Austenitic	Duplex	Duplex	Duplex	Duplex	Duplex	Ferritic	Ferritic
	2500 - 2550°F	---	2720	---	---	1190	---	2500 - 2550°F	---	---	---	---	2200-2450	2500-2550	2500-2550
	Non-Magnetic	Magnetic	Ferromagnetic	Magnetic	Ferromagnetic	---	---	---	---	---	---	---	---	---	Magnetic
	64-70R	80-95R	96 Rb Max	---	31 Rc Max	40 Brinell	90 Rb Typ	100 Rb Max	---	32 Rc Max	290 HB max	31 Rc max	109 Rb Min	88 Rb Max	89 Rb Max
	50,000	84,000	70,000	152,500	100,000	22,000	112,000	100,000	100,000	116,000	108,000	95,000	185,000	55,000	65,000
	40,000	80,000	30,000	---	70,000	21,000	52,000	45,000	41,000	80,000	80,000	65,000	150,000	25,000	30,000
	20	5	25	---	25	8	40	30	40	15	25	25	12	20	22
	Good	Good/Fair	Good	Fair/Poor	Excellent	---	Very Good	Good	Very Good	Very Good	Very Good	Excellent	Good	Good	Good
	Good	Fair	Good	Fair	Very Good	Good	Excellent	Good	Excellent	Very Good	Very Good	Very Good	Good	Good	Good
	Good	Poor	Poor	Poor	Very Good	Good	Excellent	Excellent	Excellent	Very Good	Very Good	Very Good	Excellent	Poor	Poor
	Good	No	No	No	Good	---	Excellent	Excellent	Excellent	Very Good	Very Good	Very Good	Excellent	No	No
	Good	No	Fair	No	Good	---	Good	Good	Good	Good	Good	Good	Good	Fair	Fair
	Excellent	No	Fair	No	Good	---	Good	Good	Good	Good	Good	Good	Good	Fair	Fair
	Fair	No	Fair	No	Good	---	Good	Good	Good	Good	Good	Good	Good	Good	No

INDEX

Part No.	Page	Part No.	Page	Part No.	Page	Part No.	Page
A91079.....	24,39	AE0379.....	31	AE6049.....	25	AS4249.....	24
A92079.....	24,39	AE0389.....	31	AE6059.....	25	AS4259.....	24
A94079.....	25,39	AE0399.....	31	AE6119.....	25	AS6219.....	24
AA1118.....	28	AE0409.....	31	AE6129.....	25	AS6229.....	24
AA1128.....	28	AE0419.....	31	AE6139.....	25	AS6239.....	24
AA1138.....	28	AE0429.....	31	AE6149.....	25	AS6249.....	24
AA1148.....	28	AE0439.....	31	AE6159.....	25	AS6259.....	24
AA1158.....	28	AE0449.....	31	AE7019.....	25	AU2029.....	25
AA3118.....	28	AE0459.....	31	AE7029.....	25	AU2039.....	25
AA3128.....	28	AE0469.....	31	AE7039.....	25	AU2059.....	25
AA3138.....	28	AE0479.....	31	AE7049.....	25	AU2079.....	25
AA3148.....	28	AE0489.....	31	AE7059.....	25	AU2089.....	25
AA3158.....	28	AE0499.....	31	AE7119.....	25	AU2099.....	25
AA3168.....	28	AE0609-100.....	31	AE7129.....	25	AU2159.....	25
AA3178.....	28	AE1118.....	28	AE7139.....	25	BFES-A0830-020.....	12
AA8638.....	28	AE1128.....	28	AE7149.....	25	BFES-A0830-020-P900C.....	11
AA8648.....	28	AE1138.....	28	AE7159.....	25	BFES-A0830-024.....	12
AA8658.....	28	AE1148.....	28	AH1115.....	28	BFES-A0830-024-P900C.....	11
AA8668.....	28	AE1158.....	28	AH1125.....	28	BFES-A0830-027.....	12
AA8678.....	28	AE2009.....	28	AH1135.....	28	BFES-A0830-027-P900C.....	11
AE0109.....	31	AE2018.....	28	AH1145.....	28	BFES-A0830-034.....	12
AE0119.....	31	AE3118.....	28	AH1155.....	28	BFES-A0830-034-P900C.....	11
AE0129.....	31	AE3128.....	28	AH3115.....	28	BFES-A0830-041.....	12
AE0139.....	31	AE3138.....	28	AH3125.....	28	BFES-A0830-041-P900C.....	11
AE0149.....	31	AE3148.....	28	AH3135.....	28	BFES-A0830-048.....	12
AE0159.....	31	AE3158.....	28	AH3145.....	28	BFES-A0830-048-P900C.....	11
AE0169.....	31	AE3168.....	28	AH3155.....	28	BFES-A0830-055.....	12
AE0179.....	31	AE3178.....	28	AH3165.....	28	BFES-A0830-055-P900C.....	11
AE0189.....	31	AE4259.....	09	AH3175.....	28	BFES-A0830-069.....	12
AE0199.....	31	AE4269.....	09	AS2119.....	24	BFES-A0830-069-P900C.....	11
AE0209.....	31	AE4279.....	09	AS2129.....	24	BFES-A0830-076.....	12
AE0219.....	31	AE4329.....	08	AS2139.....	24	BFES-A0830-076-P900C.....	11
AE0229.....	31	AE4339.....	08	AS2149.....	24	BFES-A0830-090.....	12
AE0239.....	31	AE4349.....	08	AS2159.....	24	BFES-A0830-090-P900C.....	11
AE0249.....	31	AE4359.....	08	AS2219.....	24	BFES-A1230-020.....	12
AE0259.....	31	AE4369.....	08	AS2229.....	24	BFES-A1230-020-P900C.....	11
AE0269.....	31	AE4529.....	08	AS2239.....	24	BFES-A1230-024.....	12
AE0279.....	31	AE4539.....	08	AS2249.....	24	BFES-A1230-024-P900C.....	11
AE0289.....	31	AE4549.....	08	AS2259.....	24	BFES-A1230-027.....	12
AE0299.....	31	AE4559.....	08	AS4119.....	24	BFES-A1230-027-P900C.....	11
AE0309.....	31	AE4569.....	08	AS4129.....	24	BFES-A1230-034.....	12
AE0319.....	31	AE4759.....	08	AS4139.....	24	BFES-A1230-034-P900C.....	11
AE0329.....	31	AE4769.....	08	AS4149.....	24	BFES-A1230-041.....	12
AE0339.....	31	AE4779.....	08	AS4159.....	24	BFES-A1230-041-P900C.....	11
AE0349.....	31	AE6019.....	25	AS4219.....	24	BFES-A1230-048.....	12
AE0359.....	31	AE6029.....	25	AS4229.....	24	BFES-A1230-048-P900C.....	11
AE0369.....	31	AE6039.....	25	AS4239.....	24	BFES-A1230-055.....	12

INDEX

Part No.	Page	Part No.	Page	Part No.	Page	Part No.	Page
BFES-A1230-055-P900C.....	11	C17399.....	6	C41599.....	8	CP1299.....	21
BFES-A1230-069.....	12	C18189.....	6	C41699.....	8	CP12S9.....	21
BFES-A1230-069-P900C.....	11	C18389.....	6	C42499.....	8	CP1499.....	21
BFES-A1230-076.....	12	C19199.....	6	C44499.....	8	CP14S9.....	21
BFES-A1230-076-P900C.....	11	C19399.....	6	C444B9.....	8	CP1699.....	21
BFES-A1230-090.....	12	C20299.....	5	C44599.....	8	CP16S9.....	21
BFES-A1230-090-P900C.....	11	C20399.....	5	C445G9.....	8	CP1899.....	21
C00169.....	11,13,36	C203Y9.....	5	C44699.....	8	CP18S9.....	21
C00269.....	18,36	C20499.....	5	C446R9.....	8	CP2099.....	21
C00369.....	36	C204BB.....	5	C45299.....	8	CP20S9.....	21
C07569.....	11,13,38	C20499.....	5	C45399.....	8	CP2499.....	21
C08569.....	37	C20599.....	5	C45499.....	8	CP24S9.....	21
C12799.....	6	C205G9.....	5	C45599.....	8	CP2699.....	21
C12899.....	6	C20699.....	5	C45699.....	8	CP26S9.....	21
C12999.....	6	C206BB.....	5	C72099.....	5	CP2899.....	21
C13099.....	6	C206C9-P900.....	13	C72299.....	5	CP28S9.....	21
C13199.....	6	C206R9.....	5	C72499.....	5	CP3119.....	21
C13399.....	6	C25299.....	5	C72599.....	5	CP311S.....	21
C13499.....	6	C25399.....	5	C72699.....	5	CP3299.....	21
C13599.....	6	C25499.....	5	C80399.....	9	CP32S9.....	21
C13699.....	6	C25499-D900.....	13	C80499.....	9	CP3999.....	21
C144C9-P000.....	13	C25599.....	5	C80599.....	9	CP3S99.....	21
C144C9-P100.....	13	C25699.....	5	C80699.....	9	CP4S99.....	21
C144C9-P200.....	13	C25699-D900.....	13	C85399.....	9	CP5S99.....	21
C144C9-P300.....	13	C27599.....	10	C85499.....	9	CP6S99.....	21
C144C9-P302.....	13	C27699.....	10	C85599.....	9	CP7S99.....	21
C144C9-P400.....	13	C27799.....	10	C85699.....	9	CP8S99.....	21
C144C9-P500.....	13	C30399.....	7	C90399.....	8	CP9S99.....	21
C144C9-P550.....	13	C30499.....	7	C90499.....	8	D00189.....	33
C144C9-P600.....	13	C30599.....	7	C90599.....	8	D00299.....	33
C144C9-P700.....	13	C30699.....	7	C90699.....	8	D00499.....	33
C144C9-P800.....	13	C35399.....	7	C91399.....	8	D00799.....	33
C144C9-P900.....	13	C35499.....	7	C91499.....	8	D00889.....	33
C14499.....	6	C35599.....	7	C91599.....	8	D00999.....	33
C14599.....	6	C35699.....	7	C91699.....	8	D02189.....	33
C14699.....	6	C40099.....	11,37	CB1000.....	38	D02299.....	33
C14899.....	6	C40299.....	8	CP0399.....	21	D04099.....	32
C14999.....	6	C40399.....	8	CP0499.....	21	D04599.....	32
C15099.....	6	C403Y9.....	8	CP0599.....	21	D10309.....	33
C15199.....	7	C40499.....	8	CP0699.....	21	D10319.....	33
C15399.....	7	C404B9.....	8	CP0799.....	21	D10329.....	33
C15499.....	7	C40599.....	8	CP0899.....	21	D10409.....	33
C15599.....	7	C405G9.....	8	CP0999.....	21	D10419.....	33
C15699.....	7	C40699.....	8	CP1099.....	21	D10429.....	33
C16189.....	6	C406R9.....	8	CP10S9.....	21	D20309.....	33
C16389.....	6	C41399.....	8	CP1199.....	21	D20319.....	33
C17199.....	6	C41499.....	8	CP11S9.....	21	D20329.....	33

INDEX

Part No.	Page	Part No.	Page	Part No.	Page	Part No.	Page
D20409.....	33	ID4419.....	30	JS2499.....	19	JS4049.....	19
D20419.....	33	ID4429.....	30	JS2529.....	19	JS4059.....	19
D20429.....	33	ID4609.....	30	JS2539.....	19	JS4069.....	19
D30288.....	33	ID4619.....	30	JS2559.....	19	JS4079.....	19
D31099.....	33	ID4629.....	30	JS2569.....	19	JS4089.....	19
D31599.....	33	IT Series Tools.....	40	JS2579.....	19	JS4099.....	19
D40309.....	33	J00169.....	36	JS2589.....	19	JS4109.....	19
D40319.....	33	J02069.....	37	JS2599.....	19	JS4119.....	19
D40329.....	33	J05069.....	36	JS2709.....	19	JS4129.....	19
D40409.....	33	J10099.....	10	JS3019.....	19	JS4139.....	19
D40419.....	33	JS2019.....	19	JS3029.....	19	JS4149.....	19
D40429.....	33	JS2029.....	19	JS3039.....	19	JS4159.....	19
D50089.....	32	JS2039.....	19	JS3049.....	19	JS4169.....	19
D50489.....	32	JS2049.....	19	JS3059.....	19	JS4219.....	19
D51089.....	32	JS2059.....	19	JS3069.....	19	JS4279.....	19
D51289.....	32	JS2069.....	19	JS3079.....	19	JS4339.....	19
D51389.....	32	JS2079.....	19	JS3089.....	19	JS4349.....	19
G40269.....	37	JS2089.....	19	JS3099.....	19	JS4379.....	19
G43099.....	5	JS2099.....	19	JS3109.....	19	JS4459.....	19
G43199.....	5	JS2109.....	19	JS3119.....	19	JS4479.....	19
G43299.....	5	JS2119.....	19	JS3129.....	19	JS4489.....	19
G44099.....	5	JS2129.....	19	JS3139.....	19	JS4499.....	19
G44199.....	5	JS2139.....	19	JS3149.....	19	JS4559.....	19
G44299.....	5	JS2149.....	19	JS3159.....	19	JS4709.....	19
G46099.....	5	JS2159.....	19	JS3169.....	19	K50289.....	38
G46299.....	5	JS2169.....	19	JS3179.....	19	KE0128.....	26
ID1009.....	30	JS2179.....	19	JS3189.....	19	KE0138.....	26
ID1019.....	30	JS2189.....	19	JS3199.....	19	KE0148.....	26
ID1029.....	30	JS2199.....	19	JS3219.....	19	KE0158.....	26
ID1039.....	30	JS2209.....	19	JS3279.....	19	KE0168.....	26
ID1049.....	30	JS2219.....	19	JS3309.....	19	KE0178.....	26
ID1059.....	30	JS2279.....	19	JS3319.....	19	KE0188.....	26
ID2006.....	30	JS2309.....	19	JS3339.....	19	KE0328.....	26
ID2026.....	30	JS2319.....	19	JS3349.....	19	KE0338.....	26
ID2036.....	30	JS2339.....	19	JS3369.....	19	KE0348.....	26
ID2046.....	30	JS2349.....	19	JS3379.....	19	KE0358.....	26
ID2056.....	30	JS2369.....	19	JS3439.....	19	KE0368.....	26
ID2816.....	30	JS2379.....	19	JS3459.....	19	KE0378.....	26
ID2826.....	30	JS2409.....	19	JS3469.....	19	KE0388.....	26
ID2836.....	30	JS2419.....	19	JS3479.....	19	KE0828.....	26
ID2846.....	30	JS2429.....	19	JS3489.....	19	KE0848.....	26
ID2859.....	30	JS2439.....	19	JS3499.....	19	KE0858.....	26
ID2906.....	30	JS2449.....	19	JS3559.....	19	KE0888.....	26
ID3009.....	30	JS2459.....	19	JS3709.....	19	KE1128.....	26
ID4002.....	30	JS2469.....	19	JS4019.....	19	KE1138.....	26
ID4059.....	30	JS2479.....	19	JS4029.....	19	KE1148.....	26
ID4409.....	30	JS2489.....	19	JS4039.....	19	KE1158.....	26

INDEX

Part No.	Page	Part No.	Page	Part No.	Page	Part No.	Page
KE1168.....	26	L22199.....	7	SX0220-100.....	29	UL2150.....	15
KE1178.....	26	L22999.....	7	SX0405.....	29	UL2159.....	15
KE1188.....	26	L24299.....	7	SX0406.....	29	UL2169.....	15
KE1328.....	26	L24699.....	7	SX0407.....	29	UL2175.....	15
KE1338.....	26	L26399.....	7	SX0408.....	29	UL2179.....	15
KE1348.....	26	L27199.....	7	SX0409.....	29	UL2189.....	15
KE1358.....	26	L27399.....	7	SX0410.....	29	UL2199.....	15
KE1368.....	26	L28499.....	7	SX0331.....	29	UL2279.....	15
KE1378.....	26	L28899.....	7	SX0332.....	29	UL2289.....	15
KE1388.....	26	L29099.....	7	SX0333.....	29	UL2709.....	15
KT4U046-0350.....	27	L29299.....	7	SX0334.....	29	UL2799.....	15
KT4U046-0500.....	27	M15099.....	35	T30069.....	21,37	UL2839.....	15
KT6U046-0200.....	27	M15199.....	35	TL3800.....	39	UL2869.....	15
KT6U046-0350.....	27	M15599.....	35	UB2549.....	15	UL2919.....	15
KT6U046-0500.....	27	M15699.....	35	UB2569.....	15	UL4000-D.....	14,15,40
KT6B046-0200.....	27	M15799.....	35	UL1018.....	15	UL9010.....	17,40
KT6B046-0350.....	27	M15899.....	35	UL1024.....	15	V00699.....	34
KT6B046-0500.....	27	M21099.....	35	UL1028.....	15	V00899.....	34
KT4U078-0200.....	27	M21199.....	35	UL1032.....	15	V01099.....	34
KT4U078-0350.....	27	M21899.....	35	UL1036.....	15	V01299.....	34
KT4U078-0500.....	27	M50389.....	38	UL1046.....	15	V01699.....	34
KT6U078-0200.....	27	O16S99.....	11	UL1056.....	15	V02099.....	34
KT6U078-0350.....	27	O325S9.....	11	UL1070.....	15	V02499.....	34
KT6U078-0500.....	27	PB0499.....	21	UL1086.....	15	V02899.....	34
KT6B078-0200.....	27	PB0599.....	21	UL1096.....	15	V03299.....	34
KT6B078-0350.....	27	PB0699.....	21	UL1106.....	15	V03699.....	34
KT6B078-0500.....	27	PB0799.....	21	UL1116.....	15	V04099.....	34
KT6U150-0500.....	27	PB0899.....	21	UL2020.....	15	V04499.....	34
KT6U150-0600.....	27	PB0999.....	21	UL2024.....	15	V04899.....	34
KT6U150-0700.....	27	PB1099.....	21	UL2028.....	15	V05299.....	34
KT6U150-0750.....	27	PB1199.....	21	UL2032.....	15	V05699.....	34
KT6U150-0900.....	27	PB1299.....	21	UL2036.....	15	V06499.....	34
KT6B150-0500.....	27	PB1499.....	21	UL2040.....	15	V07299.....	34
KT6B150-0600.....	27	PB1699.....	21	UL2044.....	15	V08099.....	34
KT6B150-0700.....	27	PB1899.....	21	UL2048.....	15	V08899.....	34
KT6B150-0750.....	27	PB2099.....	21	UL2052.....	15	V10499.....	34
KT6B150-0900.....	27	PB2499.....	21	UL2060.....	15	V20299.....	34
L15399.....	7	PB2699.....	21	UL2068.....	15	V20399.....	34
L15499.....	7	PB2899.....	21	UL2076.....	15		
L15599.....	7	PB3299.....	21	UL2084.....	15		
L15699.....	7	S03869.....	21,37	UL2092.....	15		
L15789.....	7	S35099.....	18,41	UL2109.....	15		
L20399.....	7	S75099.....	18,41	UL2119.....	15		
L20499.....	7	SM1700.....	21,41	UL2120.....	15		
L20799.....	7	SX0073-20.....	29	UL2129.....	15		
L20899.....	7	SX0130-6.....	29	UL2139.....	15		
L21099.....	7	SX0090-8.....	29	UL2149.....	15		

BAND-IT[®]

ENGINEERED FASTENING SOLUTIONS

More Clamps

More Markets

More Solutions!

Aerospace
Automotive
Cable TV
Cable Management
Coal Power
Construction
Electrical
Government
Hose
Insulation
Offshore
Oil & Gas
Marine
Military
Municipal
Petrochemical
Power Plants
Refineries
Ship Building
Subsea
Telecommunications
Traffic
Utility



IDEX

Copyright BAND-IT[®]

A Unit of IDEX Corporation

Denver, Colorado U.S.A.

Product Solutions Guide 2017 All rights reserved.