



# FLANGE FITTINGS

*HYDRAULIC FLANGES, ADAPTERS & ACCESSORIES*







# FLANGE FITTINGS

Available in both forged and one-piece swept configurations, Brennan Industries now manufactures a full line of flange adapters for use with Brennan's expanded split and 4-bolt flange product line.

Made to endure extremely high working pressures and tensile strength, Brennan flange adapters are designed to perform in a variety of clearance applications.

Brennan flange adapters are available in connection sizes ranging from 1/2" to 4".

**Contact a Brennan representative to learn more: (888) 331-1523.**

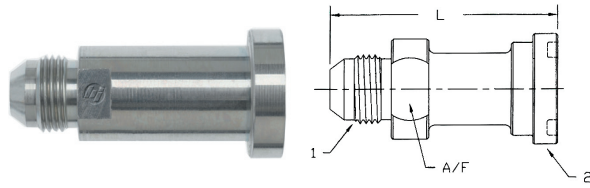
## TABLE OF CONTENTS

- 03 STRAIGHTS**
- 04 ELBOWS**
- 07 TEES & PLUGS**
- 08 HEAD CONNECTORS**
- 09 PLUG BLOCKS & PLATES**
- 19 SPLIT & CAPTIVE FLANGES**
- 22 MOUNTING KITS**
- 23 INDEX**



# STRAIGHTS

## 1700 MJ-FLANGE STRAIGHT CODE 61



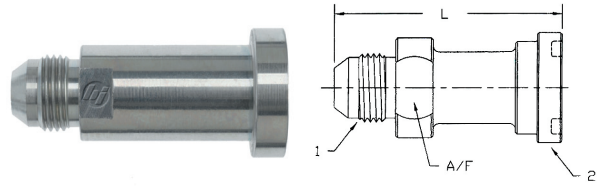
PART NO.	TUBE O.D.	1 THREAD	2 FLANGE	L (in.)	A/F (in.)
1700-08-08	1/2	3/4-16	1/2	2.600	1.000
1700-08-12	1/2	3/4-16	3/4	2.750	1.125
1700-10-10	5/8	7/8-14	5/8	3.69	.9375
1700-12-10	3/4	1 1/16-12	5/8	2.55	1.125
1700-12-12	3/4	1 1/16-12	3/4	2.750	1.375
1700-12-16	3/4	1 1/16-12	1	2.800	1.250
1700-12-20	3/4	1 1/16-12	1-1/4	2.800	1.688
1700-12-24	3/4	1 1/16-12	1-1/2	2.80	1.50
1700-16-12	1	1-5/16-12	3/4	2.750	1.375
1700-16-16	1	1-5/16-12	1	2.800	1.625
1700-16-20	1	1-5/16-12	1 1/4	2.800	1.375
1700-16-24	1	1-5/16-12	1 1/2	2.800	1.687
1700-20-16	1 1/4	1-5/8-12	1	2.800	1.625
1700-20-20	1 1/4	1-5/8-12	1 1/4	2.80	1 11/16
1700-20-24	1 1/4	1-5/8-12	1 1/2	3.375	2.125
1700-20-32	1 1/4	1-5/8-12	2	3.50	1 11/16
1700-24-16	1-1/2	1-7/8-12	1	3.130	1.875
1700-24-20	1-1/2	1-7/8-12	1 1/4	3.40	2
1700-24-24	1-1/2	1-7/8-12	1 1/2	3.50	2
1700-24-32	1-1/2	1-7/8-12	2	3.730	2.000
1700-24-40	1-1/2	2-7/8-12	2 1/2	3.97	
1700-32-24	2	2 1/2-12	1 1/2	4.20	2.622
1700-32-32	2	2-1/2-12	2	3.980	2.625
1700-32-40	2	2 1/2-12	2 1/2	3.638	2.750
1700-40-40	2 1/2	3-12	2 1/2	4.209	3.250

## 1710 MB-FLANGE STRAIGHT



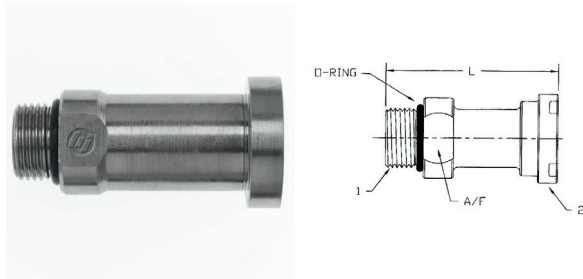
PART NO.	TUBE O.D.	THREAD	FLANGE	LLGTH	A/F
1710-08-08	1/2	3/4-16 UNF	1/2	2.490	0.875
1710-12-12	3/4	1 1/16-12 UN	3/4	2.610	1.250
1710-16-16	1	1-5/16-12 UN	1	2.61	1 1/2
1710-20-20	1 1/4	1-5/8-12 UN	1 1/4	3.13	1 7/8
1710-24-24	1 1/2	1-7/8-12 UN	1 1/2	3.140	2.125
1710-32-32	2	2-1/2-12	2	3.630	2.750

## 1800 MJ-FLANGE STRAIGHT CODE 62



PART NO.	TUBE O.D.	1 THREAD	2 FLANGE	L (in.)	A/F (in.)
1800-08-08	1/2	3/4-16	1/2	2.610	0.812
1800-08-12	1/2	3/4-16	3/4	2.75	1.125
1800-12-12	3/4	1-1/16-12	3/4	2.750	1.375
1800-12-16	3/4	1-1/16-12	1	2.800	1.625
1800-12-20	3/4	1-1/16-12	1-1/4	3.050	1.500
1800-16-12	1	1-5/16-12 UN	3/4	2.75	1 3/8
1800-16-16	1	1-5/16-12	1	2.800	1.375
1800-16-20	1	1-5/16-12 UN	1 1/4	3.05	1 3/8
1800-16-24	1	1-5/16-12	1-1/2	3.330	1.688
1800-20-16	1-1/4	1-5/8-12	1	2.800	1.625
1800-20-20	1-1/4	1-5/8-12	1 1/4	3.050	1.750
1800-20-24	1-1/4	1-5/8-12	1-1/2	3.500	2.125
1800-24-20	1-1/2	1-7/8-12	1-1/4	3.300	1.875
1800-24-24	1-1/2	1-7/8-12	1-1/2	3.500	2.125
1800-24-32	1-1/2	1-7/8-12	2	3.980	2.625
1800-32-24	2	2-1/2-12	1-1/2	4.940	2.625
1800-32-32	2	2-1/2-12	2	4.230	2.625

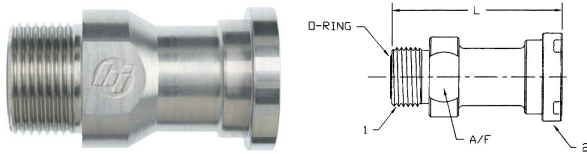
## 1810 MB-FLANGE STRAIGHT CODE 62



PART NO.	TUBE O.D.	1 THREAD	2 FLANGE	L1 (in.)	A/F (in.)
1810-08-08	1/2	3/4-16 UNF	1/2	2.50	7/8
1810-12-12	3/4	1-1/16-12	3/4	2.620	1.375
1810-16-16	1	1-5/16-12	1	2.625	1.625
1810-20-20	1 1/4	1-5/8-12 UN	1 1/4	3.00	1 7/8
1810-24-24	1 1/2	1-7/8-12 UN	1 1/2	3.40	2 1/8
1810-32-32	2	2 1/2-12 UN	2	3.75	2 3/4

# FS1700

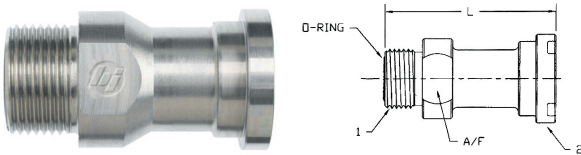
MFS-FLANGE STRAIGHT - CODE 61



PART NO.	TUBE O.D.	1 THREAD	2 FLANGE	L (in.)	A/F (in.)
FS1700-08-08	1/2	13/16-16 UN	1/2	2.450	1.125
FS1700-12-12	3/4	1-3/16-12	3/4	2.750	1.375
FS1700-12-16	3/4	1-3/16-12	1	2.800	1.250
FS1700-16-12	1	1-7/16-12	3/4	2.750	1.625
FS1700-16-16	1	1-7/16-12	1	2.800	1.500
FS1700-16-20	1	1-7/16-12	1 1/4	2.800	1.688
FS1700-20-16	1 1/4	1-11/16-12	1	2.800	1.875
FS1700-20-20	1 1/4	1-11/16-12	1 1/4	2.800	1.875
FS1700-20-24	1 1/4	1-11/16-12	1 1/2	3.500	2.000
FS1700-24-20	1 1/2	2-12	1 1/4	3.200	2.125
FS1700-24-24	1 1/2	2-12	1 1/2	3.500	2.125
FS1700-24-32	1 1/2	2-12	2	3.330	2.125

# FS1800

MFS-FLANGE STRT CODE 62

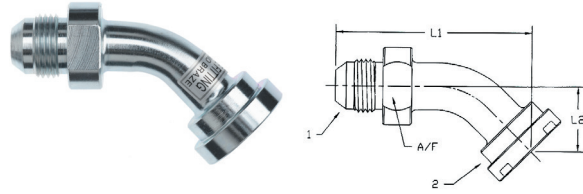


PART NO.	TUBE O.D.	1 THREAD	2 FLANGE	L (in.)	A/F (in.)
FS1800-08-08	1/2	13/16-16	1/2	2.580	0.875
FS1800-12-12	3/4	1-3/16-12	3/4	2.750	1.375
FS1800-12-16	3/4	1-3/16-12	1	2.800	1.625
FS1800-16-12	1	1-7/16-12	3/4	2.750	1.625
FS1800-16-16	1	1-7/16-12	1	3.360	1.500
FS1800-16-20	1	1-7/16-12	1-1/4	3.050	1.500
FS1800-20-16	1-1/4	1-11/16-12	1	3.200	1.750
FS1800-20-20	1-1/4	1-11/16-12	1-1/4	3.050	1.875
FS1800-20-24	1-1/4	1-11/16-12	1-1/2	3.500	2.125
FS1800-24-20	1-1/2	2-12	1-1/4	3.300	2.125
FS1800-24-24	1-1/2	2-12	1-1/2	3.500	2.125
FS1800-24-32	1-1/2	2-12	2	3.580	2.125

# ELBOWS

## 1703

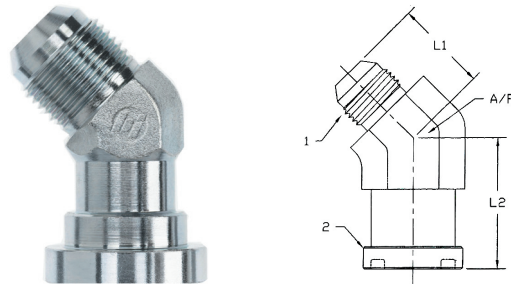
MJ-FLANGE 45 DEG ELBOW CODE 61



PART NO.	TUBE O.D.	1 THREAD	2 FLANGE	L1 (in.)	L2 (in.)	A/F (in.)
1703-08-08	1/2	3/4-16 UNF	1/2	2.72	0.91	7/8
1703-08-12	1/2	3/4-16 UNF	3/4	2.72	0.94	7/8
1703-12-12	3/4	1 1/16-12 UN	3/4	3.15	1.02	1 1/8
1703-12-16	3/4	1 1/16-12 UN	1	3.15	1.02	1 1/8
1703-12-20	3/4	1 1/16-12 UN	1 1/4	3.15	1.02	1 1/8
1703-16-12	1	1 5/16-12 UN	3/4	3.66	1.18	1 3/8
1703-16-16	1	1 5/16-12 UN	1	3.66	1.18	1 3/8
1703-16-20	1	1 5/16-12 UN	1 1/4	3.66	1.18	1 3/8
1703-16-24	1	1 5/16-12 UN	1 1/2	3.74	1.26	1 3/8
1703-20-12	1 1/4	1 5/8-12 UN	3/4	3.78	1.18	1 11/16
1703-20-16	1 1/4	1 5/8-12 UN	1	3.86	1.22	1 11/16
1703-20-20	1 1/4	1 5/8-12 UN	1 1/4	4.21	1.38	1 11/16
1703-20-24	1 1/4	1 5/8-12 UN	1 1/2	4.25	1.42	1 11/16
1703-24-16	1-1/2	1-7/8-12	1	4.165	1.200	2.00
1703-24-20	1 1/2	1 7/8-12 UN	1 1/4	4.70	1.46	2
1703-24-24	1 1/2	1 7/8-12 UN	1 1/2	4.96	1.69	2
1703-24-32	1 1/2	1 7/8-12 UN	2	5.12	1.81	2
1703-32-32	2	2 1/2-12 UN	2	6.22	2.17	2 3/4

## 1703-FG

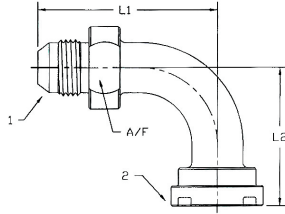
MJ-FLANGE 45 DEG CODE 61



PART NO.	TUBE O.D.	1 THREAD	2 FLANGE	L1 (in.)	L2 (in.)	A/F (in.)
1703-12-12-FG	3/4	1 1/16-12 UN	3/4	1.280	1.580	1.0625
1703-16-16-FG	1	1 5/16-12 UN	1	1.470	1.850	1.3125
1703-20-20-FG	1 1/4	1 5/8-12 UN	1 1/4	1.590	2.040	1.625
1703-24-24-FG	1 1/2	1 7/8-12 UN	1 1/2	1.78	2.38	1 7/8
1703-32-32-FG	2	2 1/2-12 UN	2	2.220	3.000	2.500

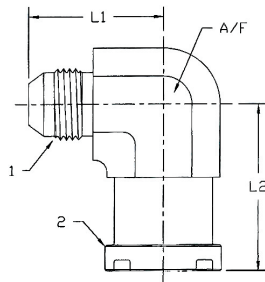


# 1704 MJ-FLANGE 90 DEG CODE 61



PART NO.	TUBE O.D.	1 THREAD	2 FLANGE	L1 (in.)	L2 (in.)	A/F (in.)
1704-08-08	1/2	3/4-16 UNF	1/2	2.32	1.81	7/8
1704-08-12	1/2	3/4-16 UNF	3/4	2.32	1.85	7/8
1704-10-10	5/8	7/8-14	5/8	2.729	2.114	.9375
1704-12-10	3/4	1-1/16-12	5/8	2.850	1.910	1.125
1704-12-12	3/4	1-1/16-12 UN	3/4	2.83	2.13	1-1/8
1704-12-16	3/4	1-1/16-12 UN	1	2.83	2.13	1-1/8
1704-12-20	3/4	1-1/16-12 UN	1-1/4	2.83	2.13	1-1/8
1704-12-24	3/4	1-1/16-12 UN	1-1/2	2.901	2.458	1.125
1704-16-12	1	1-5/8-12 UN	3/4	2.95	2.13	1-3/8
1704-16-16	1	1-5/8-12 UN	1	3.39	2.60	1-3/8
1704-16-20	1	1-5/8-12 UN	1-1/4	3.39	2.60	1-3/8
1704-16-24	1	1-5/8-12 UN	1-1/2	3.39	2.66	1-3/8
1704-20-12	1-1/4	1-5/8-12	3/4	3.052	2.26	1.6875
1704-20-16	1-1/4	1-5/8-12 UN	1	3.54	2.60	1-1/16
1704-20-20	1-1/4	1-5/8-12 UN	1-1/4	3.98	3.03	1-1/16
1704-20-24	1-1/4	1-5/8-12 UN	1-1/2	3.98	3.11	1-1/16
1704-20-32	1-1/4	1-5/8-12	2	3.976	3.504	1.688
1704-24-16	1-1/2	1-7/8-12	1	4.039	2.849	2.000
1704-24-20	1-1/2	1-7/8-12 UN	1-1/4	4.21	3.03	2
1704-24-24	1-1/2	1-7/8-12 UN	1-1/2	4.57	3.66	2
1704-24-32	1-1/2	1-7/8-12 UN	2	4.57	3.86	2
1704-32-24	2	2-1/2-12 UN	1-1/2	5.04	3.66	2-3/4
1704-32-32	2	2-1/2-12 UN	2	5.79	4.84	2-3/4

# 1704-FG MJ-FLANGE 90 DEG CODE 61

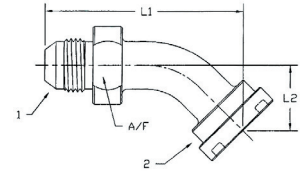
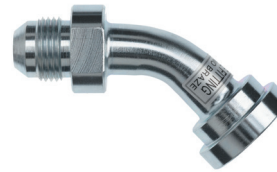


PART NO.	TUBE O.D.	1 THREAD	2 FLANGE	L1 (in.)	L2 (in.)	A/F (in.)
1704-08-08-FG	1/2	3/4-16 UNF	1/2	1.460	2.050	0.875
1704-08-12-FG	1/2	3/4-16	3/4	1.660	2.130	1.062
1704-08-24-FG	1/2	3/4-16 UNF	1-1/2	2.319	3.134	1.9218
1704-12-12-FG	3/4	1-1/16-12 UN	3/4	1.660	2.130	1.0625
1704-12-16-FG	3/4	1-1/16-12 UN	1	1.81	2.37	1-5/16
1704-12-20-FG	3/4	1-1/16-12 UN	1-1/4	2.06	2.62	1.625
1704-12-24-FG	3/4	1-1/16-12 UN	1-1/2	2.20	3.15	1-5/8
1704-16-12-FG	1	1-5/8-12	3/4	1.660	2.130	1.062
1704-16-16-FG	1	1-5/8-12 UN	1	1.811	2.370	1.3125
1704-16-20-FG	1	1-5/8-12 UN	1-1/4	2.060	2.620	1.625
1704-20-16-FG	1-1/4	1-5/8-12	1	1.810	2.370	1.312
1704-20-20-FG	1-1/4	1-5/8-12	1-1/4	2.060	2.620	1.625

Continued...

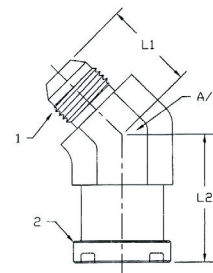
PART NO.	TUBE O.D.	1 THREAD	2 FLANGE	L1 (in.)	L2 (in.)	A/F (in.)
1704-20-24-FG	1-1/4	1-5/8-12 UN	1-1/2	2.330	3.150	1.875
1704-24-20-FG	1-1/2	1-7/8-12	1-1/4	2.060	2.620	1.625
1704-24-24-FG	1-1/2	1-7/8-12	1-1/2	2.330	3.150	1.875
1704-24-32-FG	1-1/2	1-7/8-12 UN	2	3.060	4.250	2.500
1704-32-24-FG	2	2-1/2-12	1-1/2	3.060	4.250	2.500
1704-32-32-FG	2	2-1/2-12 UN	2	3.06	4.25	2.500

# 1803 MJ-FLANGE 45 DEG CODE 62



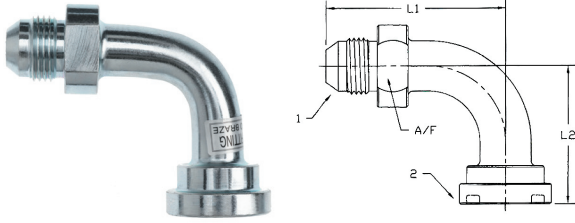
PART NO.	TUBE O.D.	1 THREAD	2 FLANGE	L1 (in.)	L2 (in.)	A/F (in.)
1803-08-08	1/2	3/4-16 UNF	1/2	2.76	0.94	7/8
1803-12-12	3/4	1-1/16-12 UN	3/4	3.31	1.14	1-1/8
1803-12-16	3/4	1-1/16-12 UN	1	3.35	1.22	1-1/8
1803-12-20	3/4	1-1/16-12	1-1/4	3.75	1.62	1.125
1803-16-12	1	1-5/16-12 UN	3/4	3.46	1.18	1-3/8
1803-16-16	1	1-5/16-12 UN	1	3.86	1.38	1-3/8
1803-16-20	1	1-5/16-12 UN	1-1/4	3.98	1.50	1-3/8
1803-16-24	1	1-5/16-12 UN	1-1/2	4.13	1.61	1-3/8
1803-20-12	1-1/4	1-5/8-12 UN	3/4	4.13	1.42	1-1/2
1803-20-16	1-1/4	1-5/8-12 UN	1	4.13	1.42	1-1/16
1803-20-20	1-1/4	1-5/8-12 UN	1-1/4	4.53	1.65	1-1/16
1803-20-24	1-1/4	1-5/8-12 UN	1-1/2	4.65	1.81	1-1/16
1803-24-20	1-1/2	1-7/8-12	1-1/4	4.875	1.400	2.000
1803-24-24	1-1/2	1-7/8-12 UN	1-1/2	5.16	1.93	2
1803-32-32	2	2-1/2-12 UN	2	6.54	2.48	2-3/4

# 1803-FG MJ-FLANGE 45 DEG CODE 62



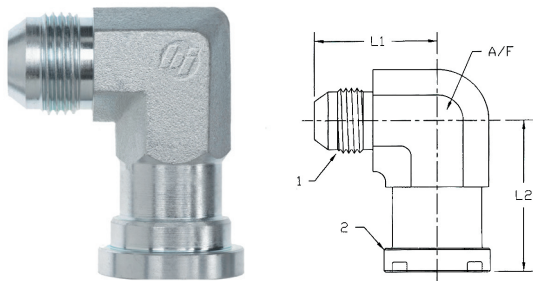
PART NO.	TUBE O.D.	1 THREAD	2 FLANGE	L1 (in.)	L2 (in.)	A/F (in.)
1803-12-12-FG	3/4	1-1/16-12 UN	3/4	1.28	1.58	1-1/16
1803-16-16-FG	1	1-5/16-12	1	1.470	1.850	1.312
1803-20-20-FG	1-1/4	1-5/8-12	1-1/4	1.590	2.040	1.625
1803-20-24-FG	1-1/4	1-5/8-12	1-1/2	4.65	1.81	1-1/16
1803-24-24-FG	1-1/2	1-7/8-12 UN	1-1/2	1.780	2.380	1-7/8

# 1804 MJ-FLANGE 90 DEG CODE 62



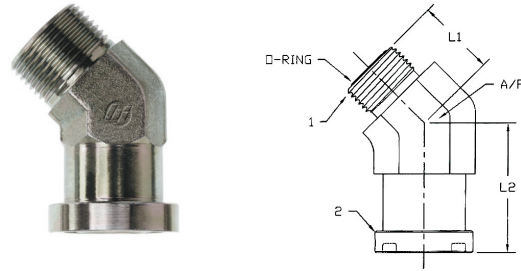
PART NO.	TUBE O.D.	1 THREAD	2 FLANGE	L1 (in.)	L2 (in.)	A/F (in.)
1804-08-08	1/2	3/4-16 UNF	1/2	2.32	1.85	7/8
1804-10-10	5/8	7/8-14	5/8	2.610	2.090	1
1804-12-12	3/4	1 1/16-12 UN	3/4	2.83	2.28	1 1/8
1804-12-16	3/4	1 1/16-12 UN	1	2.83	2.40	1 1/8
1804-12-20	3/4	1 1/16-12 UN	1 1/4	2.83	2.76	1 1/8
1804-16-12	1	1 5/16-12 UN	3/4	2.93	2.28	1 3/8
1804-16-16	1	1 5/16-12 UN	1	3.39	2.87	1 3/8
1804-16-20	1	1 5/16-12 UN	1 1/4	3.39	3.03	1 3/8
1804-16-24	1	1 5/16-12 UN	1 1/2	3.39	3.23	1 3/8
1804-20-12	1 1/4	1-5/8-12	3/4	3.22	2.60	2
1804-20-16	1 1/4	1 5/8-12 UN	1	3.54	2.87	1 11/16
1804-20-20	1 1/4	1 5/8-12 UN	1 1/4	3.98	3.46	1 11/16
1804-20-24	1 1/4	1 5/8-12 UN	1 1/2	3.98	3.66	1 11/16
1804-24-16	1 1/2	1 7/8-12 UN	1	3.94	2.87	2
1804-24-20	1 1/2	1 7/8-12 UN	1 1/4	4.33	3.46	2
1804-24-24	1 1/2	1 7/8-12 UN	1 1/2	4.57	4.02	2
1804-24-32	1-1/2	1-7/8-12	2	4.833	4.303	2.000
1804-32-32	2	2 1/2-12 UN	2	5.79	5.31	2 3/4

# 1804-FG MJ-FLANGE 90 DEG CODE 62



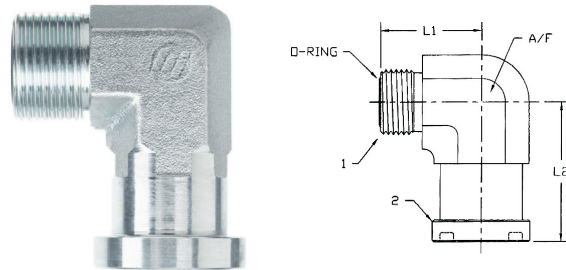
PART NO.	TUBE O.D.	1 THREAD	2 FLANGE	L1 (in.)	L2 (in.)	A/F (in.)
1804-08-08-FG	1/2	3/4-16	1/2	1.520	2.050	0.875
1804-08-12-FG	1/2	3/4-16	3/4	1.660	2.130	1.062
1804-12-12-FG	3/4	1-1/16-12	3/4	1.660	2.130	1.062
1804-12-16-FG	3/4	1-1/16-12	1	2.060	2.430	1.312
1804-16-12-FG	1	1-5/16-12	3/4	1.660	2.130	1.062
1804-16-16-FG	1	1-5/16-12	1	1.810	2.370	1.312
1804-16-20-FG	1	1 5/16-12 UN	1 1/4	2.06	2.76	1 5/16
1804-20-16-FG	1-1/4	1-5/8-12	1	1.810	2.370	1.625
1804-20-20-FG	1-1/4	1-5/8-12	1-1/4	2.060	2.760	1.625
1804-20-24-FG	1 1/4	1 5/8-12 UN	1 1/2	2.33	3.15	1 7/8
1804-24-20-FG	1 1/2	1 7/8-12 UN	1 1/4	2.19	2.76	1 5/8
1804-24-24-FG	1-1/2	1-7/8-12	1-1/2	2.330	3.150	1.875
1804-24-32-FG	1-1/2	1-7/8-12	2	3.060	4.250	2.500
1804-32-24-FG	2	2-1/2-12	1-1/2	3.060	4.250	2.625
1804-32-32-FG	2	2-1/2-12	2	3.060	4.250	2.500

# FS1703-FG MJ-FLANGE 45 DEG CODE 61



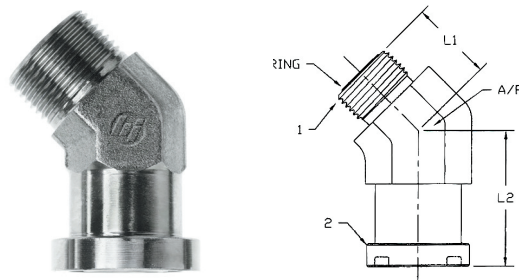
PART NO.	TUBE O.D.	1 THREAD	2 FLANGE	L1 (in.)	L2 (in.)	A/F (in.)
FS1703-12-12-FG	3/4	1-3/16-12	3/4	1.280	1.580	1.062
FS1703-12-16-FG	3/4	1-3/16-12	1	1.470	1.850	1.311
FS1703-16-16-FG	1	1-7/16-12	1	1.470	1.850	1.311
FS1703-20-20-FG	1-1/4	1-11/16-12	1-1/4	1.590	2.040	1.625
FS1703-24-24-FG	1-1/2	2-12	1-1/2	1.780	2.380	1.875

# FS1704-FG MFS-FLANGE 90 DEG CODE 61



PART NO.	TUBE O.D.	1 THREAD	2 FLANGE	L1 (in.)	L2 (in.)	A/F (in.)
FS1704-12-12-FG	3/4	1-3/16-12	3/4	1.660	2.130	1.062
FS1704-12-16-FG	3/4	1-3/16-12	1	1.810	2.370	1.438
FS1704-16-12-FG	1	1-7/16-12	3/4	1.660	2.130	1.062
FS1704-16-12-FG-BB	1	1-7/16-12	3/4	1.660	2.130	1.438
FS1704-16-16-FG	1	1-7/16-12	1	1.810	2.370	1.312
FS1704-16-20-FG	1	1-7/16-12	1-1/4	2.060	2.620	1.625
FS1704-20-16-FG	1-1/4	1-11/16-12	1	1.810	2.370	1.311
FS1704-20-20-FG	1-1/4	1-11/16-12	1-1/4	2.060	2.620	1.625
FS1704-20-24-FG	1-1/4	1-11/16-12	1-1/2	2.330	3.150	1.625
FS1704-24-20-FG	1-1/2	2-12	1-1/4	2.060	2.620	1.625
FS1704-24-24-FG	1-1/2	2-12	1-1/2	2.330	3.150	1.875

# FS1803-FG MJ-FLANGE 45 DEG CODE 62

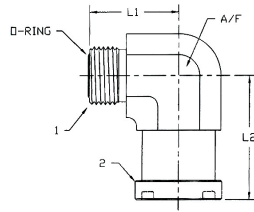
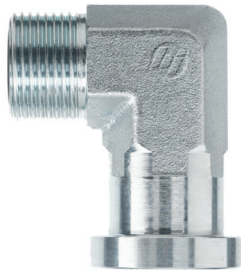


PART NO.	TUBE O.D.	1 THREAD	2 FLANGE	L1 (in.)	L2 (in.)	A/F (in.)
FS1803-12-12-FG	3/4	1-3/16-12	3/4	1.280	1.850	1.312
FS1803-16-16-FG	1	1-7/16-12	1	1.470	1.850	1.312
FS1803-20-20-FG	1-1/4	1-11/16-12	1-1/4	1.590	2.040	1.625
FS1803-24-24-FG	1-1/2	2-12	1-1/2	1.780	2.380	1.875



# FS1804-FG

MFS-FLANGE 90 DEG CODE 62

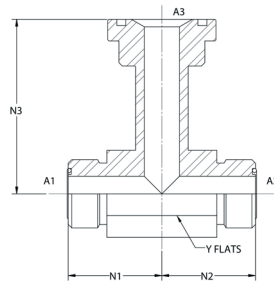
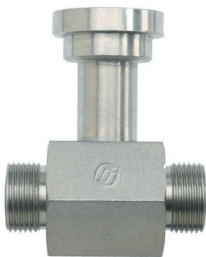


PART NO.	TUBE O.D.	1 THREAD	2 FLANGE	L1 (in.)	L2 (in.)	A/F (in.)
FS1804-12-12-FG	3/4	1-3/16-12	3/4	1.660	2.130	1.062
FS1804-12-16-FG	3/4	1-3/16-12	1	1.810	2.370	1.312
FS1804-16-12-FG	1	1-7/16-12	3/4	1.660	2.130	1.062
FS1804-16-12-FG-BB	1	1-7/16-12	3/4	1.660	2.130	1.062
FS1804-16-16-FG	1	1-7/16-12	1	1.810	2.370	1.312
FS1804-16-20-FG	1	1 7/16-12 UN	1 1/4	2.100	2.760	1.625
FS1804-20-16-FG	1-1/4	1-11/16-12	1	1.810	2.370	1.312
FS1804-20-20-FG	1-1/4	1-11/16-12	1-1/4	2.060	2.750	1.625
FS1804-20-24-FG	1-1/4	1-11/16-12	1-1/2	2.330	3.150	1.875
FS1804-24-20-FG	1-1/2	2-12	1-1/4	2.060	2.760	1.875
FS1804-24-24-FG	1-1/2	2-12	1-1/2	2.330	3.150	1.875

# TEES

## FS1805

MFS-MFS-FLANGE CODE 62

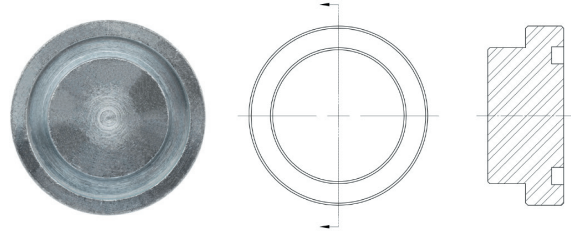


PART NO.	1 THREAD	2 THREAD	FLANGE	L1 LENGTH	L2 LENGTH	L3 LENGTH	A/F
FS1805-12-12-16	1-3/16-12	1-3/16-12	1	1.620	1.620	3.030	1.875

# PLUGS

## 1724

FLANGE PLUGS - CODE 61

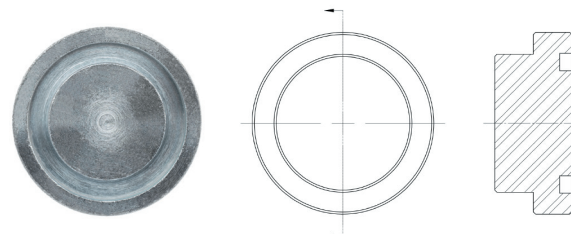


PART NO.	Flange
----------	--------

1724-08	1/2
1724-12	3/4
1724-16	1
1724-20	1 1/4
1724-24	1 1/2
1724-32	2
1724-40	2.5
1724-48	3

## 1824

FLANGE PLUGS - CODE 62



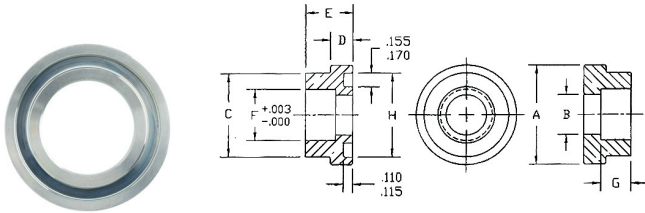
PART NO.	Flange
----------	--------

1824-08	1/2
1824-12	3/4
1824-16	1
1824-20	1-1/4
1824-24	1-1/2
1824-32	2

# HEAD CONNECTORS

## 3300-61

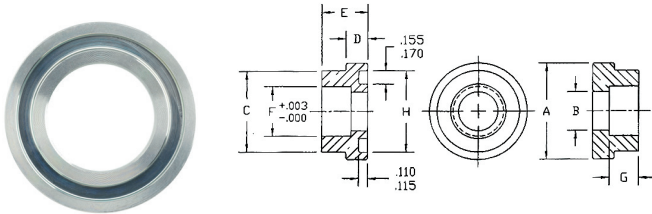
TUBE BRAZE FLANGE HEAD CONNECTOR - CODE 61 (O-RING FACE)



PART NO.	Tube Size	Flange Size	A	B	C	D	E	F	G	H
3300-61-08-08	1/2	1/2	1.188	0.406	1.00	0.265	0.50	0.502	0.312	1.000
3300-61-10-08	5/8	1/2	1.188	0.500	1.00	0.235	0.50	0.625	0.312	1.000
3300-61-12-12	3/4	3/4	1.500	0.656	1.25	0.265	0.56	0.752	0.375	1.250
3300-61-16-12	1	3/4	1.500	0.750	1.25	0.265	0.56	1.002	0.375	1.250
3300-61-16-16	1	1	1.750	0.906	1.50	0.315	0.56	1.002	0.375	1.560
3300-61-20-20	1-1/4	1-1/4	2.000	1.125	1.70	0.315	1.00	1.252	0.375	1.750
3300-61-24-20	1-1/2	1-1/4	2.000	1.250	1.70	0.315	0.56	1.502	0.375	1.750
3300-61-24-24	1-1/2	1-1/2	2.380	1.375	1.98	0.315	0.62	1.502	0.438	2.115
3300-61-28-24	1-3/4	1-1/2	2.380	1.500	1.98	0.315	0.62	1.752	0.438	2.115
3300-61-32-32	2	2	2.810	1.875	2.45	0.315	0.62	2.002	0.500	2.490
3300-61-36-32	2-1/4	2	2.810	2.000	2.45	0.375	0.62	2.252	0.500	2.490
3300-61-40-40	2-1/2	2-1/2	3.312	2.375	2.92	0.375	0.68	2.502	0.500	2.995
3300-61-44-40	2-3/4	2-1/2	3.312	2.500	2.92	0.375	0.68	2.752	0.500	2.995
3300-61-48-48	3	3	4.000	2.875	3.565	0.375	0.75	3.002	0.562	3.615

## 3300-62

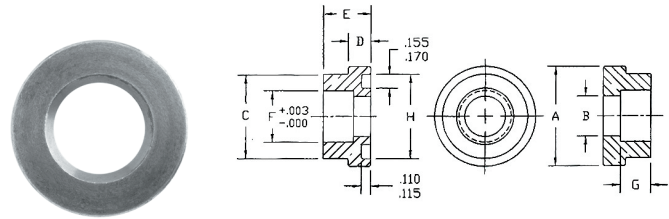
TUBE BRAZE FLANGE HEAD CONNECTOR - CODE 62 (O-RING FACE)



PART NO.	Tube Size	Flange Size	A	B	C	D	E	F	G	H
3300-62-12-12	3/4	3/4	1.625	0.656	1.250	0.345	0.69	0.752	0.500	1.250
3300-62-16-12	1	3/4	1.625	0.750	1.250	0.345	0.69	1.002	0.500	1.250
3300-62-16-16	1	1	1.875	0.810	1.500	0.375	0.81	1.002	0.625	1.560
3300-62-20-16	1-1/4	1	1.875	1.000	1.500	0.375	0.81	1.252	0.625	1.560
3300-62-20-20	1-1/4	1-1/4	2.125	1.010	1.718	0.405	1.00	1.252	0.812	1.750
3300-62-24-20	1-1/2	1-1/4	2.125	1.250	1.718	0.405	1.00	1.502	0.812	1.750
3300-62-24-24	1-1/2	1-1/2	2.500	1.250	2.000	0.495	1.19	1.502	1.000	2.115
3300-62-28-24	1-3/4	1-1/2	2.500	1.500	2.000	0.495	1.19	1.752	1.000	2.115
3300-62-32-32	2	2	3.125	1.750	2.620	0.495	1.50	2.002	1.375	2.490
3300-62-36-32	2-1/4	2	3.125	2.000	2.620	0.495	1.50	2.252	1.312	2.490

## 3301-61

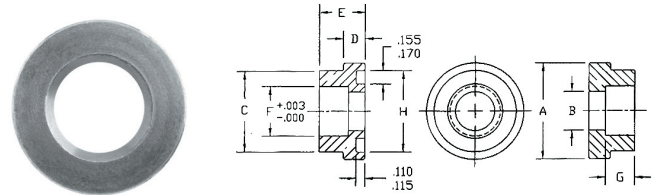
TUBE BRAZE FLANGE HEAD CONNECTOR - CODE 61 (FLAT FACE)



PART NO.	Tube Size	Flange Size	A	B	C	D	E	F	G	H
3301-61-08-08	1/2	1/2	1.188	0.406	1.00	0.265	0.50	0.502	0.312	1.000
3301-61-10-08	5/8	1/2	1.188	0.500	1.00	0.235	0.50	0.625	0.312	1.000
3301-61-12-12	3/4	3/4	1.500	0.656	1.25	0.265	0.56	0.752	0.375	1.250
3301-61-16-12	1	3/4	1.500	0.750	1.25	0.265	0.56	1.002	0.375	1.250
3301-61-16-16	1	1	1.750	0.906	1.500	0.315	0.56	1.002	0.375	1.560
3301-61-20-16	1-1/4	1	1.750	1.000	1.50	0.315	0.56	1.252	0.375	1.560
3301-61-24-20	1-1/2	1-1/4	2.000	1.250	1.70	0.315	0.56	1.502	0.375	1.750
3301-61-28-24	1-3/4	1-1/2	2.380	1.500	1.98	0.315	0.62	1.752	0.438	2.115
3301-61-32-32	2	2	2.810	1.875	2.45	0.315	0.62	2.002	0.500	2.490
3301-61-36-32	2-1/4	2	2.810	2.000	2.45	0.375	0.62	2.252	0.500	2.490
3301-61-40-40	2-1/2	2-1/2	3.312	2.375	2.92	0.375	0.68	2.502	0.500	2.995
3301-61-44-40	2-3/4	2-1/2	3.312	2.500	2.92	0.375	0.68	2.752	0.500	2.995
3301-61-48-48	3	3	4.000	2.875	3.565	0.375	0.75	3.002	0.562	3.615

## 3301-62

TUBE BRAZE FLANGE HEAD CONNECTOR - CODE 62 (FLAT FACE)



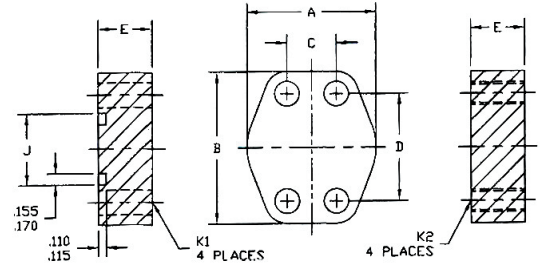
PART NO.	Tube Size	Flange Size	A	B	C	D	E	F	G	H
3301-62-12-12	3/4	3/4	1.625	0.656	1.250	0.345	0.69	0.752	0.500	1.250
3301-62-16-12	1	3/4	1.625	0.750	1.250	0.345	0.69	1.002	0.500	1.250
3301-62-16-16	1	1	1.875	0.810	1.500	0.375	0.81	1.002	0.625	1.560
3301-62-20-16	1-1/4	1	1.875	1.000	1.500	0.375	0.81	1.252	0.625	1.560
3301-62-20-20	1-1/4	1-1/4	2.125	1.010	1.718	0.405	1.00	1.252	0.812	1.750
3301-62-24-20	1-1/2	1-1/4	2.125	1.250	1.718	0.405	1.00	1.502	0.812	1.750
3301-62-24-24	1-1/2	1-1/2	2.500	1.250	2.000	0.495	1.19	1.502	1.000	2.115
3301-62-28-24	1-3/4	1-1/2	2.500	1.500	2.000	0.495	1.19	1.752	1.000	2.115
3301-62-32-32	2	2	3.125	1.750	2.000	0.495	1.50	2.002	1.375	2.490
3301-62-36-32	2-1/4	2	3.125	2.000	2.000	0.495	1.50	2.252	1.312	2.490



# PLUG BLOCKS & PLATES

## 1942-61

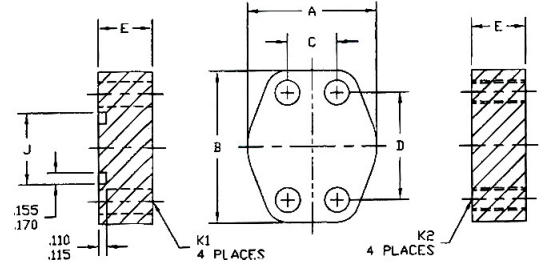
PLUG BLOCK - CODE 61 (O-RING FACE)



PART NO.	Flange Size	A	B	C	D	E	J Min	J Max	K1 Drill	K2 Thread
1942-61-08	1/2	1.813	2.125	0.688	1.500	0.750	1.000	1.005	0.344	5/16-18
1942-61-12	3/4	2.063	2.563	0.875	1.875	0.750	1.250	1.255	0.406	3/8-16
1942-61-16	1	2.313	2.750	1.031	2.063	0.880	1.560	1.565	0.406	3/8-16
1942-61-20	1-1/4	2.875	3.125	1.188	2.313	0.940	1.750	1.755	0.469	7/16-14
1942-61-24	1-1/2	3.250	3.688	1.406	2.750	1.190	2.115	2.125	0.531	1/2-13
1942-61-32	2	3.813	4.000	1.688	3.063	1.440	2.490	2.500	0.531	1/2-13
1942-61-40	2-1/2	4.281	4.500	2.000	3.500	1.820	2.995	3.005	0.531	1/2-13
1942-61-48	3	5.156	5.313	2.438	4.188	2.190	3.615	3.625	0.656	5/8-11

## 1942-62

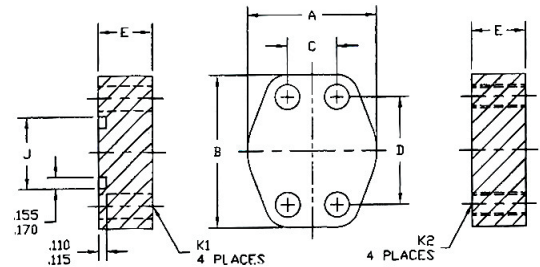
PLUG BLOCK - CODE 62 (O-RING FACE)



PART NO.	Flange Size	A	B	C	D	E	J Min	J Max	K1 Drill	K2 Thread
1942-62-12	3/4	2.500	2.950	0.937	2.000	1.250	1.245	1.255	0.406	3/8-16
1942-62-16	1	2.750	3.190	1.093	2.250	1.500	1.560	1.565	0.469	7/16-14
1942-62-20	1-1/4	3.060	3.750	1.250	2.625	1.500	1.750	1.755	0.531	1/2-13
1942-62-24	1-1/2	3.750	4.440	1.437	3.125	1.820	2.115	2.125	0.656	5/8-11
1942-62-32	2	4.500	5.250	1.750	3.812	1.750	2.490	2.500	0.781	3/4-10

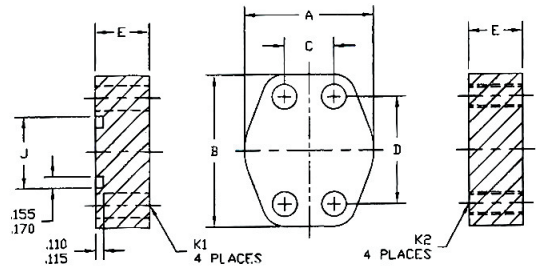
## 1943-61

PLUG BLOCK - CODE 61 (FLAT FACE)



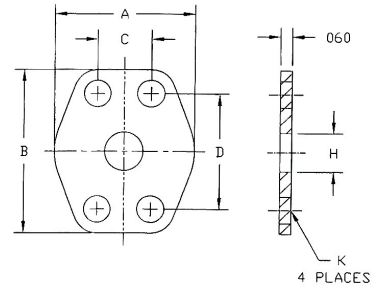
PART NO.	Flange Size	A	B	C	D	E	J Min	J Max	K1 Drill	K2 Thread
1943-61-12	3/4	2.063	2.563	0.875	1.875	0.750	1.250	1.255	0.406	3/8-16
1943-61-16	1	2.313	2.750	1.031	2.063	0.880	1.560	1.565	0.406	3/8-16
1943-61-20	1-1/4	2.875	3.125	1.188	2.313	0.940	1.750	1.755	0.469	7/16-14
1943-61-24	1-1/2	3.250	3.688	1.406	2.750	1.190	2.115	2.125	0.531	1/2-13
1943-61-32	2	3.813	4.000	1.688	3.063	1.440	2.490	2.500	0.531	1/2-13
1943-61-40	2-1/2	4.281	4.500	2.000	3.500	1.820	2.995	3.005	0.531	1/2-13
1943-61-48	3	5.156	5.313	2.438	4.188	2.190	3.615	3.625	0.656	5/8-11

# 1943-62 PLUG BLOCK - CODE 62 (FLAT FACE)



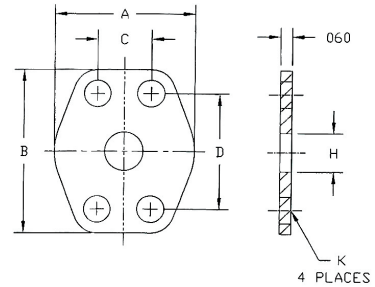
PART NO.	Flange Size	A	B	C	D	E	J Min	J Max	K1 Drill	K2 Thread
1943-62-12	3/4	2.380	2.810	0.937	2.000	1.250	1.250	1.255	0.406	3/8-16
1943-62-16	1	2.750	3.190	1.093	2.250	1.500	1.560	1.565	0.469	7/16-14
1943-62-20	1-1/4	3.060	3.750	1.250	2.625	1.430	1.750	1.755	0.531	1/2-13
1943-62-32	2	4.500	5.250	1.750	3.812	1.750	2.490	2.500	0.781	3/4-10

# 1914-61 CONNECTOR PLATE - CODE 61



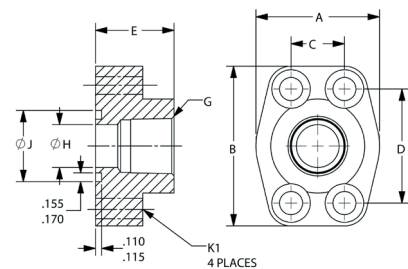
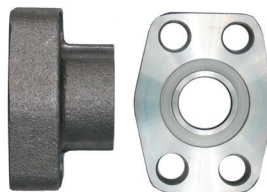
PART NO.	FLANGE SIZE	A	B	C	D	H	KDRILL
1914-61-08	1/2	1.810	2.12	0.688	1.500	0.500	0.344
1914-61-12	3/4	2.060	2.560	0.875	1.875	0.750	0.406
1914-61-16	1	2.310	2.750	1.031	2.062	1.000	0.406
1914-61-20	1 1/4	2.880	3.120	1.188	2.312	1.250	0.469
1914-61-24	1 1/2	3.250	3.690	1.406	2.750	1.500	0.531
1914-61-32	2	3.810	4.000	1.688	3.062	2.000	0.531
1914-61-40	2 1/2	4.120	4.440	2.000	3.500	2.500	0.531
1914-61-48	3	5.160	5.310	2.438	4.188	3.000	0.656

# 1914-62 CONNECTOR PLATE - CODE 62



PART NO.	FLANGE SIZE	A	B	C	D	H	KDRILL
1914-62-12	3/4	2.380	2.810	0.937	2.000	0.750	0.406
1914-62-16	1	2.750	3.190	1.093	2.250	1.000	0.469
1914-62-20	1 1/4	3.060	3.750	1.250	2.625	1.250	0.531
1914-62-24	1 1/2	3.750	4.440	1.437	3.125	1.500	0.656
1914-62-32	2	4.500	5.250	1.750	3.812	2.000	0.781

# 1927-61 NPTF PORT BLOCK - CODE 61 (O-RING FACE)



PART NO.	PIPE SIZE	FLANGE SIZE	A	B	C	D	E	G NPTF	H	J MIN	J MAX	K1 DRILL
1927-61-08-08	1/2	1/2	1.82	2.17	0.688	1.500	1.25	1/2-14	0.50	1.000	1.005	0.344
1927-61-12-12	3/4	3/4	2.06	2.69	0.875	1.875	1.25	3/4-14	0.75	1.250	1.255	0.406
1927-61-16-16	1	1	2.31	2.88	1.031	2.062	1.50	1-11/2	1.00	1.560	1.565	0.406

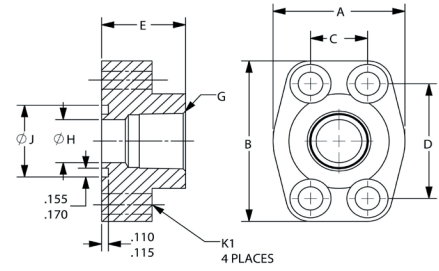
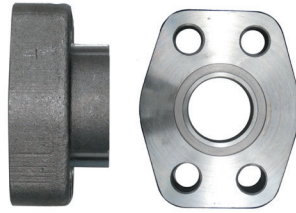
Continued...



PART NO.	PIPE SIZE	FLANGE SIZE	A	B	C	D	E	GNPTF	H	JMIN	JMAX	K1DRILL
1927-61-20-20	1 1/4	1 1/4	2.88	3.25	1.188	2.312	1.50	1 1/4-11 1/2	1.25	1.750	1.755	0.469
1927-61-24-24	1 1/2	1 1/2	3.25	3.81	1.406	2.750	1.75	1 1/2-11 1/2	1.50	2.115	2.125	0.531
1927-61-32-32	2	2	3.81	4.13	1.688	3.062	1.75	2-11 1/2	2.00	2.490	2.500	0.531
1927-61-40-40	2 1/2	2 1/2	4.28	4.63	2.000	3.500	2.00	2 1/2-8	2.50	2.995	3.005	0.531
1927-61-48-48	3	3	5.16	5.44	2.438	4.188	2.25	3-8	3.00	3.615	3.625	0.656

## 1927-62

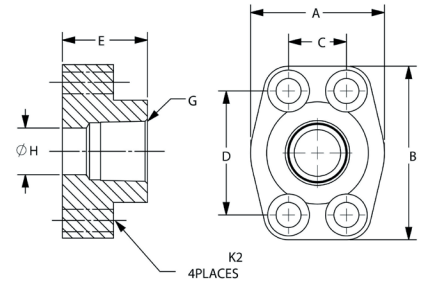
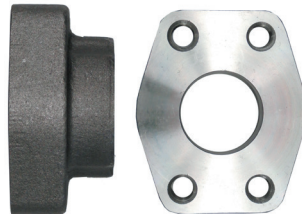
NPTF PORT BLOCK - CODE 62 (O-RING FACE)



PART NO.	PIPE SIZE	FLANGE SIZE	A	B	C	D	E	GNPTF	H	JMIN	JMAX	K1DRILL
1927-62-08-08	1/2	1/2	1.94	2.30	0.718	1.594	1.25	1/2-14	0.50	1.000	1.005	0.344
1927-62-12-12	3/4	3/4	2.38	2.81	0.937	2.000	1.25	3/4-14	0.75	1.250	1.255	0.406
1927-62-16-16	1	1	2.75	3.19	1.093	2.250	1.50	1-11 1/2	1.00	1.560	1.565	0.469
1927-62-20-20	1 1/4	1 1/4	3.06	3.75	1.25	2.625	1.50	1 1/4-11 1/2	1.25	1.750	1.755	0.531
1927-62-24-24	1 1/2	1 1/2	3.75	4.44	1.437	3.125	1.75	1 1/2-11 1/2	1.50	2.115	2.125	0.656
1927-62-32-32	2	2	4.50	5.25	1.750	3.812	1.75	2-11 1/2	2.00	2.490	2.500	0.781

## 1928-61

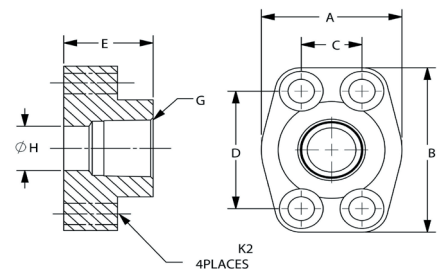
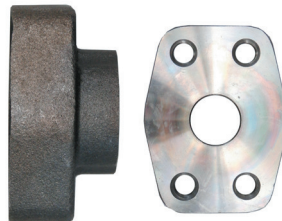
NPTF PORT BLOCK - CODE 61 (FLAT FACE)



PART NO.	PIPE SIZE	FLANGE SIZE	A	B	C	D	E	GNPTF	H	K2THD.
1928-61-08-08	1/2	1/2	1.82	2.17	0.688	1.500	1.25	1/2-14	0.50	5/16-18
1928-61-12-12	3/4	3/4	2.06	2.69	0.875	1.875	1.25	3/4-14	0.75	3/8-16
1928-61-16-16	1	1	2.31	2.88	1.031	2.062	1.50	1-11 1/2	1.00	3/8-16
1928-61-20-20	1 1/4	1 1/4	2.88	3.25	1.188	2.312	1.50	1 1/4-11 1/2	1.25	7/16-14
1928-61-24-24	1 1/2	1 1/2	3.25	3.81	1.406	2.750	1.75	1 1/2-11 1/2	1.50	1/2-13
1928-61-32-32	2	2	3.81	4.13	1.688	3.062	1.75	2-11 1/2	2.00	1/2-13
1928-61-40-40	2 1/2	2 1/2	4.28	4.63	2.000	3.500	2.00	2 1/2-8	2.50	1/2-13
1928-61-48-48	3	3	5.16	5.44	2.438	4.188	2.25	3-8	3.00	5/8-11

## 1928-62

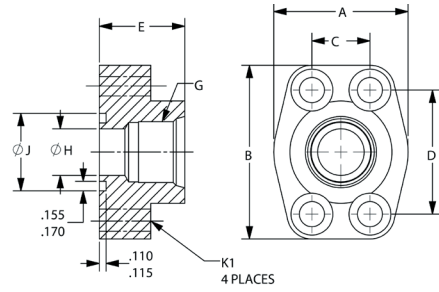
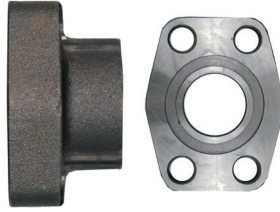
NPTF PORT BLOCK - CODE 62 (FLAT FACE)



PART NO.	PIPE SIZE	FLANGE SIZE	A	B	C	D	E	GNPTF	H	K2THD.
1928-62-08-08	1/2	1/2	1.94	2.30	0.718	1.594	1.25	1/2-14	0.50	5/16-18
1928-62-12-12	3/4	3/4	2.38	2.81	0.937	2.000	1.25	3/4-14	0.75	3/8-16
1928-62-16-16	1	1	2.75	3.19	1.093	2.250	1.50	1-11 1/2	1.00	7/16-14
1928-62-20-20	1 1/4	1 1/4	3.06	3.75	1.25	2.625	1.50	1 1/4-11 1/2	1.25	1/2-13
1928-62-24-24	1 1/2	1 1/2	3.75	4.44	1.437	3.125	1.75	1 1/2-11 1/2	1.50	5/8-11
1928-62-32-32	2	2	4.50	5.25	1.750	3.812	1.75	2-11 1/2	2.00	3/4-10

# 1929-61

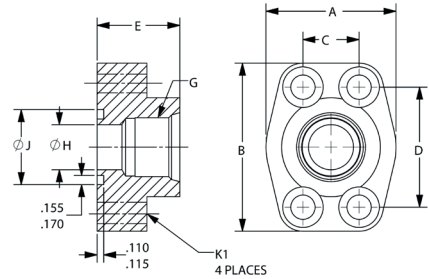
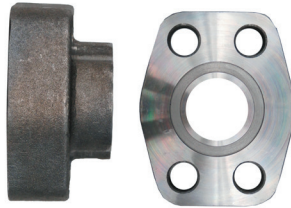
SAE PORT BLOCK - CODE 61 (O-RING FACE)



PART NO.	PIPE SIZE	FLANGE SIZE	A	B	C	D	E	G THREAD	H	J MIN	J MAX	K1 DRILL
1929-61-08-08	1/2	1/2	1.820	2.17	0.688	1.500	1.25	3/4-16	0.50	1.000	1.005	0.344
1929-61-12-12	3/4	3/4	2.060	2.69	0.875	1.875	1.25	1 1/16-12	0.75	1.250	1.255	0.406
1929-61-16-16	1	1	2.310	2.88	1.031	2.062	1.50	1 5/16-12	1.00	1.560	1.565	0.406
1929-61-20-20	1 1/4	1 1/4	2.880	3.25	1.188	2.312	1.50	1 5/8-12	1.25	1.750	1.755	0.469
1929-61-24-24	1 1/2	1 1/2	3.250	3.81	1.406	2.750	1.75	1 7/8-12	1.50	2.115	2.125	0.531
1930-61-24-24	1 1/2	1 1/2	3.250	3.81	1.406	2.750	1.75	1 7/8-12	1.50	2.115	2.125	0.531

# 1929-62

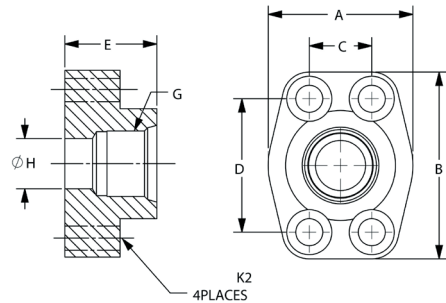
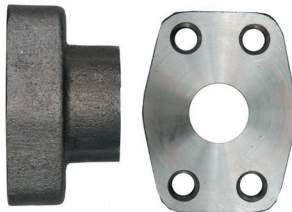
SAE PORT BLOCK - CODE 62 (O-RING FACE)



PART NO.	PIPE SIZE	FLANGE SIZE	A	B	C	D	E	G THREAD	H	J MIN	J MAX	K1 DRILL
1929-62-08-08	1/2	1/2	1.94	2.30	0.718	1.594	1.25	3/4-16	0.50	1.000	1.005	0.344
1929-62-12-12	3/4	3/4	2.38	2.81	0.937	2.000	1.25	1 1/16-12	0.75	1.250	1.255	0.406
1929-62-16-16	1	1	2.75	3.19	1.093	2.250	1.50	1 5/16-12	1.00	1.560	1.565	0.469
1929-62-20-20	1 1/4	1 1/4	3.06	3.75	1.25	2.625	1.50	1 5/8-12	1.25	1.750	1.755	0.531
1929-62-24-24	1 1/2	1 1/2	3.75	4.44	1.437	3.125	1.75	1 7/8-12	1.50	2.115	2.125	0.656
1929-62-32-32	2	2	4.50	5.25	1.750	3.812	1.75	2 1/2-12	2.00	2.490	2.50	0.781

# 1930-61

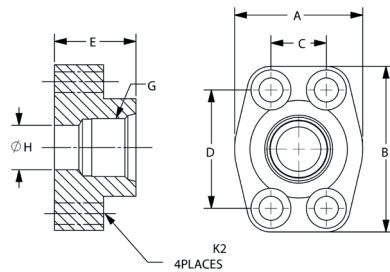
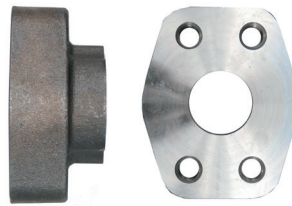
SAE PORT BLOCK - CODE 61 (FLAT FACE)



PART NO.	PIPE SIZE	FLANGE SIZE	A	B	C	D	E	G THREAD	H	K2 THD.
1930-61-08-08	1/2	1/2	1.820	2.17	0.688	1.500	1.25	3/4-16	0.50	5/16-18
1930-61-12-12	3/4	3/4	2.060	2.69	0.875	1.875	1.25	1 1/16-12	0.75	3/8-16
1930-61-16-16	1	1	2.310	2.88	1.031	2.062	1.50	1 5/16-12	1.00	3/8-16
1930-61-20-20	1 1/4	1 1/4	2.880	3.25	1.188	2.312	1.50	1 5/8-12	1.25	7/16-14

# 1930-62

SAE PORT BLOCK - CODE 62 (FLAT FACE)



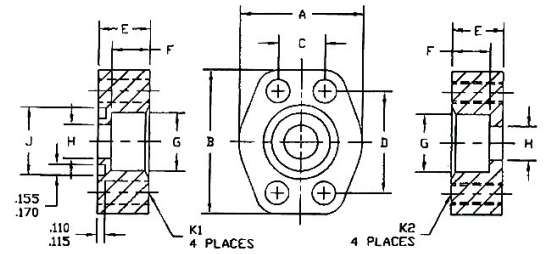
PART NO.	PIPE SIZE	FLANGE SIZE	A	B	C	D	E	G THREAD	H	K2 THD.
1930-62-08-08	1/2	1/2	1.94	2.30	0.718	1.594	1.25	3/4-16	0.50	5/16-18
1930-62-12-12	3/4	3/4	2.38	2.81	0.937	2.000	1.25	1 1/16-12	0.75	3/8-16

Continued...

PART NO.	PIPE SIZE	FLANGE SIZE	A	B	C	D	E	G	THREAD	H	K2 THD.
1930-62-16-16	1	1	2.75	3.19	1.093	2.250	1.50	15/16-12	1.00	7/16-14	
1930-62-20-20	1 1/4	1 1/4	3.06	3.75	1.25	2.625	1.50	15/8-12	1.25	1/2-13	
1930-62-24-24	1 1/2	1 1/2	3.75	4.44	1.437	3.125	1.75	17/8-12	1.50	5/8-11	
1930-62-32-32	2	2	4.50	5.25	1.750	3.812	1.75	2 1/2-12	2.00	3/4-10	

## 1933

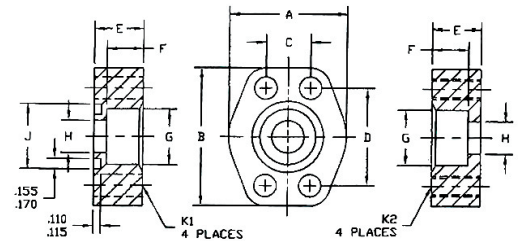
FLAT SOCKET BLOCK PIPE 500PSI (O-RING FACE)



PART NO.	Pipe Size	Flange Size	A	B	C	D	E	F	G	H	J Min	J Max	K1 Drill
1933-48-48	3	3	5.12	5.31	2.438	4.188	1.38	1.120	3.547	3.00	3.615	3.625	0.656
1933-56-56	3-1/2	3-1/2	5.50	6.00	2.750	4.750	1.44	1.190	4.047	3.50	4.095	4.115	0.656
1933-64-64	4	4	6.00	6.38	3.062	5.125	1.50	1.250	4.578	4.00	4.595	4.615	0.656
1933-80-80	5	5	7.12	7.25	3.625	6.000	1.75	1.380	5.641	5.00	5.595	5.615	0.656

## 1934

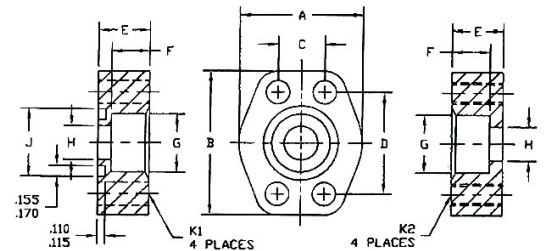
FLAT SOCKET BLOCK PIPE 500PSI (FLAT FACE)



PART NO.	Pipe Size	Flange Size	A	B	C	D	E	F	G	H	J Min	J Max	K2 Thread
1934-48-48	3	3	5.12	5.31	2.438	4.188	1.38	1.120	3.547	3.00	3.615	3.625	5/8-11
1934-56-56	3-1/2	3-1/2	5.50	6.00	2.750	4.750	1.44	1.190	4.047	3.50	4.095	4.115	5/8-11
1934-64-64	4	4	6.00	6.38	3.062	5.125	1.50	1.250	4.578	4.00	4.595	4.615	5/8-11
1934-80-80	5	5	7.12	7.25	3.625	6.000	1.75	1.380	5.641	5.00	5.595	5.615	5/8-11

## 1935-61

FLAT SOCKET BLOCK PIPE CODE 61 (O-RING FACE)

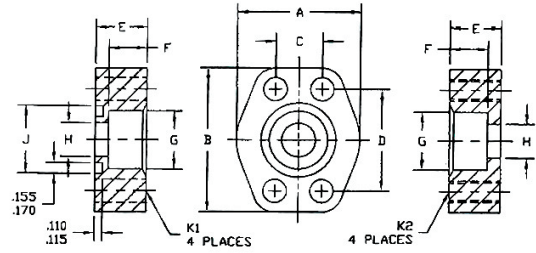


PART NO.	Pipe Size	Flange Size	A	B	C	D	E	F	G	H	J Min	J Max	K1 Drill	K2 Thread
1935-61-08-08	1/2	1/2	1.813	2.125	0.688	1.500	0.75	0.560	0.855	0.50	1.000	1.005	0.344	5/16-18
1935-61-12-12	3/4	3/4	2.063	2.563	0.875	1.875	0.75	0.560	1.062	0.75	1.250	1.255	0.406	3/8-18
1935-61-16-16	1	1	2.313	2.750	1.031	2.062	0.88	0.630	1.326	1.00	1.560	1.565	0.406	3/8-16
1935-61-20-20	1-1/4	1-1/4	2.875	3.125	1.188	2.312	0.94	0.690	1.672	1.25	1.750	1.755	0.469	7/16-14
1935-61-24-24	1-1/2	1-1/2	3.250	3.688	1.406	2.750	1.19	0.750	1.922	1.50	2.115	2.125	0.531	1/2-13
1935-61-32-32	2	2	3.813	4.000	1.688	3.062	1.38	0.875	2.406	2.00	2.490	2.500	0.531	1/2-13
1935-61-40-40	2-1/2	2-1/2	4.281	4.500	2.000	3.500	1.75	1.000	2.906	2.50	2.995	3.005	0.531	1/2-13
1935-61-48-48	3	3	5.156	5.313	2.438	4.188	2.12	1.250	3.547	3.00	3.615	3.625	0.656	5/8-11



# 1935-62

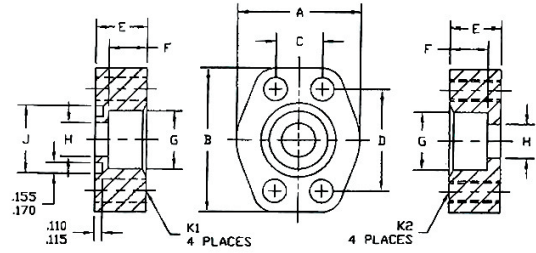
FLAT SOCKET BLOCK PIPE CODE 62 (O-RING FACE)



PART NO.	Pipe Size	Flange Size	A	B	C	D	E	F	G	H	J Min	J Max	K1 Drill	K2 Thread
1935-62-08-08	1/2	1/2	1.94	2.30	0.718	1.594	0.57	0.560	0.855	0.50	1.000	1.005	0.344	5/16-18
1935-62-12-12	3/4	3/4	2.38	2.81	0.937	2.000	1.25	0.560	1.063	0.75	1.250	1.255	0.406	3/8-16
1935-62-16-16	1	1	2.75	3.19	1.093	2.250	1.50	0.630	1.328	1.00	1.560	1.565	0.469	7/16-14
1935-62-20-20	1-1/4	1-1/4	3.06	3.75	1.250	2.625	1.50	0.690	1.672	1.25	1.750	1.755	0.531	1/2-13
1935-62-24-24	1-1/2	1-1/2	3.75	4.44	1.437	3.125	1.75	0.750	1.922	1.50	2.115	2.125	0.656	5/8-11
1935-62-32-32	2	2	4.50	5.25	1.750	3.812	1.75	0.875	2.406	2.00	2.490	2.500	0.781	3/4-10
1935-62-40-40	2-1/2	2-1/2	5.87	6.87	2.312	4.875	2.06	1.000	2.906	2.50	2.995	3.005	0.906	7/8-9
1935-62-48-48	3	3	7.00	8.50	2.812	6.000	2.62	1.250	3.547	3.00	3.615	3.625	1.156	1 1/8-7

# 1936-61

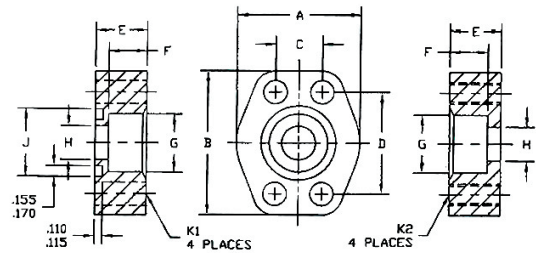
FLAT SOCKET BLOCK PIPE CODE 61 (FLAT FACE)



PART NO.	Pipe Size	Flange Size	A	B	C	D	E	F	G	H	J Min	J Max	K1 Drill	K2 Thread
1936-61-08-08	1/2	1/2	1.813	2.125	0.688	1.500	0.75	0.560	0.855	0.50	1.000	1.005	0.344	5/16-18
1936-61-12-12	3/4	3/4	2.063	2.563	0.875	1.875	0.75	0.560	1.062	0.75	1.250	1.255	0.406	3/8-16
1936-61-16-16	1	1	2.313	2.750	1.031	2.062	0.88	0.630	1.326	1.00	1.560	1.565	0.406	3/8-16
1936-61-20-20	1-1/4	1-1/4	2.875	3.125	1.188	2.312	0.94	0.690	1.672	1.25	1.750	1.755	0.469	7/16-14
1936-61-24-24	1-1/2	1-1/2	3.250	3.688	1.406	2.750	1.19	0.750	1.922	1.50	2.115	2.125	0.531	1/2-13
1936-61-32-32	2	2	3.813	4.000	1.688	3.062	1.38	0.875	2.406	2.00	2.490	2.500	0.531	1/2-13
1936-61-40-40	2-1/2	2-1/2	4.281	4.500	2.000	3.500	1.75	1.000	2.906	2.50	2.995	3.005	0.531	1/2-13
1936-61-48-48	3	3	5.156	5.313	2.438	4.188	2.12	1.250	3.547	3.00	3.615	3.625	0.656	5/8-11

# 1936-62

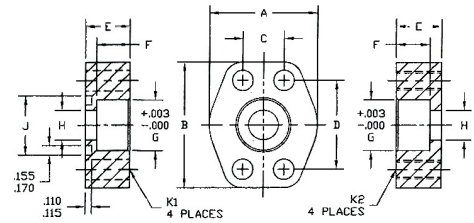
FLAT SOCKET BLOCK PIPE CODE 62 (FLAT FACE)



PART NO.	Pipe Size	Flange Size	A	B	C	D	E	F	G	H	J Min	J Max	K1 Drill	K2 Thread
1936-62-08-08	1/2	1/2	1.94	2.30	0.718	1.594	0.57	0.560	0.855	0.50	1.000	1.005	0.344	5/16-18
1936-62-12-12	3/4	3/4	2.38	2.81	0.937	2.000	1.25	0.560	1.063	0.75	1.250	1.255	0.406	3/8-16
1936-62-16-16	1	1	2.75	3.19	1.093	2.250	1.50	0.630	1.328	1.00	1.560	1.565	0.469	7/16-14
1936-62-20-20	1-1/4	1-1/4	3.06	3.75	1.250	2.625	1.50	0.690	1.672	1.25	1.750	1.755	0.531	1/2-13
1936-62-24-24	1-1/2	1-1/2	3.75	4.44	1.437	3.125	1.75	0.750	1.922	1.50	2.115	2.125	0.656	5/8-11
1936-62-32-32	2	2	4.50	5.25	1.750	3.812	1.75	0.875	2.406	2.00	2.490	2.500	0.781	3/4-10
1936-62-40-40	2-1/2	2-1/2	5.87	6.87	2.312	4.875	2.06	1.000	2.906	2.50	2.995	3.005	0.906	7/8-9
1936-62-48-48	3	3	7.00	8.50	2.812	6.000	2.62	1.250	3.547	3.00	3.615	3.625	1.156	1 1/8-7

# 1937-61

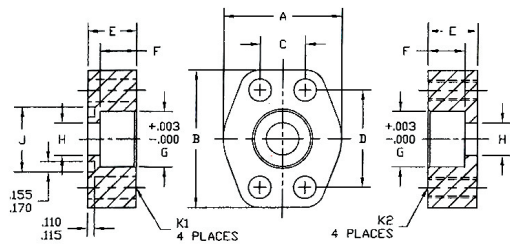
FLAT SOCKET BLOCK TUBE CODE 61 (O-RING FACE)



PART NO.	Pipe Size	Flange Size	A	B	C	D	E	F	G	H	J Min	J Max	K1 Drill	K2 Thread
1937-61-12-12	3/4	3/4	2.06	2.56	0.875	1.875	0.750	0.560	0.52	0.63	1.250	1.255	0.406	3/8-16
1937-61-16-12	1	3/4	2.06	2.56	0.875	1.875	0.750	0.560	1.002	0.75	1.250	1.255	0.406	3/8-16
1937-61-16-16	1	1	2.31	2.75	1.031	2.062	0.880	0.630	1.002	0.88	1.560	1.565	0.406	3/8-16
1937-61-20-16	1-1/4	1	2.31	2.75	1.031	2.062	0.880	0.630	1.252	1.00	1.560	1.565	0.406	3/8-16
1937-61-20-20	1-1/4	1-1/4	2.88	3.12	1.188	2.312	0.940	0.690	1.252	1.13	1.750	1.755	0.469	7/16-14
1937-61-24-20	1-1/2	1-1/4	2.88	3.12	1.188	2.312	0.940	0.690	1.502	1.25	1.750	1.755	0.469	7/16-14
1937-61-24-24	1-1/2	1-1/2	3.25	3.69	1.406	2.750	1.190	0.750	1.502	1.38	2.115	2.125	0.531	1/2-13
1937-61-28-24	1-3/4	1-1/2	3.25	3.69	1.406	2.750	1.190	0.750	1.752	1.50	2.115	2.125	0.531	1/2-13
1937-61-32-32	2	2	3.81	4.00	1.688	3.062	1.375	0.875	2.002	1.88	2.490	2.500	0.531	1/2-13
1937-61-36-32	2-1/4	2	3.81	4.00	1.688	3.062	1.375	0.875	2.252	2.00	2.490	2.500	0.531	1/2-13

# 1937-62

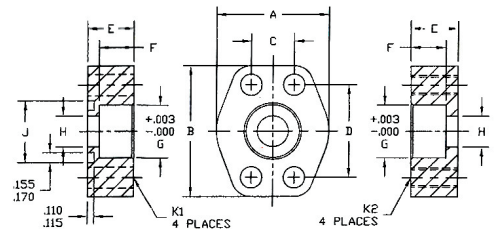
FLAT SOCKET BLOCK TUBE CODE 62 (O-RING FACE)



PART NO.	Pipe Size	Flange Size	A	B	C	D	E	F	G	H	J Min	J Max	K1 Drill	K2 Thread
1937-62-12-12	3/4	3/4	2.38	2.81	0.937	2.000	1.25	0.560	0.752	0.63	1.250	1.255	0.406	3/8-16
1937-62-16-12	1	3/4	2.38	2.81	0.937	2.000	1.25	0.560	1.002	0.75	1.250	1.255	0.406	3/8-16
1937-62-16-16	1	1	2.75	3.19	1.093	2.250	1.50	0.630	1.002	0.88	1.560	1.565	0.469	7/16-14
1937-62-20-16	1-1/4	1	2.75	3.19	1.093	2.250	1.50	0.630	1.252	1.00	1.560	1.565	0.469	7/16-14
1937-62-20-20	1-1/4	1-1/4	3.06	3.75	1.250	2.625	1.50	0.690	1.252	1.13	1.750	1.755	0.531	1/2-13
1937-62-24-20	1-1/2	1-1/4	3.06	3.75	1.250	2.625	1.50	0.690	1.502	1.25	1.750	1.755	0.531	1/2-13
1937-62-24-24	1-1/2	1-1/2	3.75	4.44	1.437	3.125	1.75	0.750	1.502	1.38	2.115	2.125	0.656	5/8-11
1937-62-28-24	1-3/4	1-1/2	3.75	4.44	1.437	3.125	1.75	0.750	1.752	1.50	2.115	2.125	0.656	5/8-11
1937-62-32-32	2	2	4.50	5.25	1.750	3.812	1.75	0.875	2.002	1.88	2.490	2.500	0.781	3/4-10
1937-62-36-32	2-1/4	2	4.50	5.25	1.750	3.812	1.75	0.875	2.252	2.00	2.490	2.500	0.781	3/4-10

# 1938-61

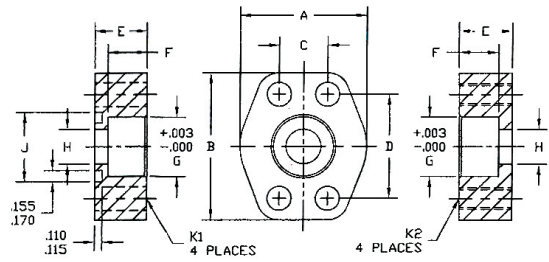
FLAT SOCKET BLOCK TUBE CODE 61 (FLAT FACE)



PART NO.	Pipe Size	Flange Size	A	B	C	D	E	F	G	H	J Min	J Max	K1 Drill	K2 Thread
1938-61-12-12	3/4	3/4	2.06	2.56	0.875	1.875	0.750	0.560	0.752	0.63	1.250	1.255	0.406	3/8-16
1938-61-16-12	1	3/4	2.06	2.56	0.875	1.875	0.750	0.560	1.002	0.75	1.250	1.255	0.406	3/8-16
1938-61-16-16	1	1	2.31	2.75	1.031	2.062	0.880	0.630	1.002	0.88	1.560	1.565	0.406	3/8-16
1938-61-20-16	1-1/4	1	2.31	2.75	1.031	2.062	0.880	0.630	1.252	1.00	1.560	1.565	0.406	3/8-16
1938-61-20-20	1-1/4	1-1/4	2.88	3.12	1.188	2.312	0.940	0.690	1.252	1.13	1.750	1.755	0.469	7/16-14
1938-61-24-20	1-1/2	1-1/4	2.88	3.12	1.188	2.312	0.940	0.690	1.502	1.25	1.750	1.755	0.469	7/16-14
1938-61-24-24	1-1/2	1-1/2	3.25	3.69	1.406	2.750	1.190	0.750	1.502	1.38	2.115	2.125	0.531	1/2-13
1938-61-28-24	1-3/4	1-1/2	3.25	3.69	1.406	2.750	1.190	0.750	1.752	1.50	2.115	2.125	0.531	1/2-13
1938-61-32-32	2	2	3.81	4.00	1.688	3.062	1.375	0.875	2.002	1.88	2.490	2.500	0.531	1/2-13
1938-61-36-32	2-1/4	2	3.81	4.00	1.688	3.062	1.375	0.875	2.252	2.00	2.490	2.500	0.531	1/2-13

# 1938-62

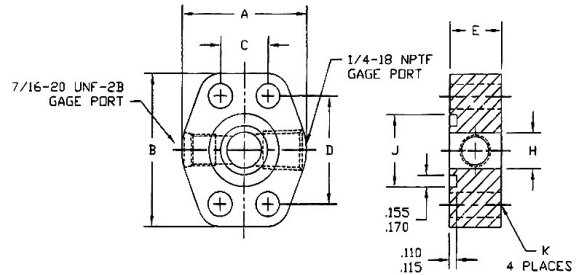
FLAT SOCKET BLOCK TUBE CODE 62 (FLAT FACE)



PART NO.	Pipe Size	Flange Size	A	B	C	D	E	F	G	H	J Min	J Max	K1 Drill	K2 Thread
1938-62-12-12	3/4	3/4	2.38	2.81	0.937	2.000	1.250	0.560	0.752	0.63	1.250	1.255	0.406	3/8-16
1938-62-16-12	1	3/4	2.38	2.81	0.937	2.000	1.25	0.560	1.002	0.75	1.250	1.255	0.406	3/8-16
1938-62-16-16	1	1	2.75	3.19	1.093	2.250	1.50	0.630	1.002	0.88	1.560	1.565	0.469	7/16-14
1938-62-20-16	1-1/4	1	2.75	3.19	1.093	2.250	1.50	0.630	1.252	1.00	1.560	1.565	0.469	7/16-14
1938-62-20-20	1-1/4	1-1/4	3.06	3.75	1.250	2.625	1.50	0.690	1.252	1.13	1.750	1.755	0.531	1/2-13
1938-62-24-20	1-1/2	1-1/4	3.06	3.75	1.250	2.625	1.50	0.690	1.502	1.25	1.750	1.755	0.531	1/2-13
1938-62-24-24	1-1/2	1-1/2	3.75	4.44	1.437	3.125	1.75	0.750	1.502	1.38	2.115	2.125	0.656	5/8-11
1938-62-28-24	1-3/4	1-1/2	3.75	4.44	1.437	3.125	1.75	0.750	1.752	1.50	2.115	2.125	0.656	5/8-11
1938-62-32-32	2	2	4.50	5.25	1.750	3.812	1.75	0.875	2.002	1.88	2.490	2.500	0.781	3/4-10
1938-62-36-32	2-1/4	2	4.50	5.25	1.750	3.812	1.75	0.875	2.252	2.00	2.490	2.500	0.781	3/4-10

# 1940-61

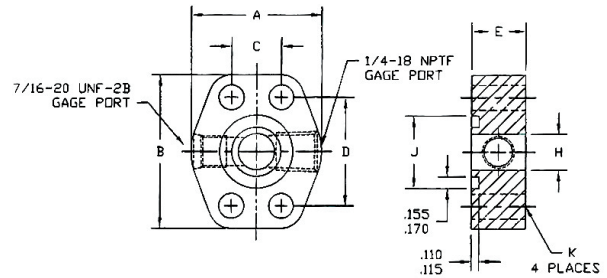
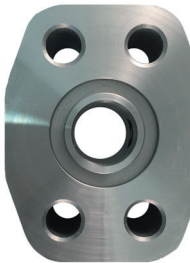
FLANGE SPACER WITH SIDE GAGE PORTS CODE 61



PART NO.	Flange Size	A	B	C	D	E	H	J	K Drill
1940-61-08	1/2	1.813	2.125	0.688	1.500	1.250	0.500	1.000	0.344
1940-61-12	3/4	2.063	2.563	0.875	1.875	1.250	0.750	1.250	0.406
1940-61-16	1	2.313	2.750	1.031	2.063	0.875	1.000	1.560	0.406
1940-61-20	1-1/4	2.875	3.125	1.188	2.313	0.937	1.250	1.750	0.469
1940-61-24	1-1/2	3.250	3.688	1.406	2.750	1.188	1.500	2.115	0.531
1940-61-32	2	3.813	4.000	1.688	3.063	1.375	2.000	2.490	0.531
1940-61-40	2-1/2	4.281	4.500	2.000	3.500	1.750	2.500	2.995	0.531
1940-61-48	3	5.156	5.313	2.438	4.188	2.125	3.000	3.615	0.656

# 1940-62

FLANGE SPACER WITH SIDE GAGE PORTS CODE 62

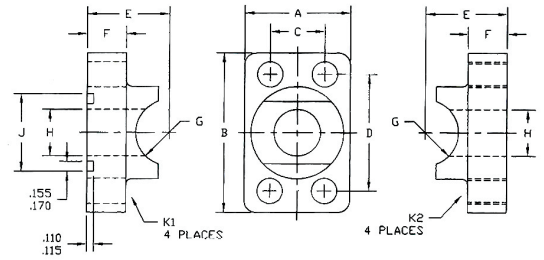


PART NO.	Flange Size	A	B	C	D	E	H	J	K Drill
1940-62-08	1/2	1.940	2.300	0.718	1.594	0.870	0.500	1.000	0.344
1940-62-12	3/4	2.500	2.950	0.937	2.000	1.250	0.750	1.250	0.406
1940-62-16	1	2.750	3.190	1.093	2.250	1.500	1.000	1.560	0.492
1940-62-20	1-1/4	3.060	3.750	1.250	2.625	1.500	1.250	1.750	0.531
1940-62-24	1-1/2	3.750	4.440	1.437	3.125	1.750	1.500	2.115	0.656
1940-62-32	2	4.500	5.250	1.750	3.812	1.750	2.000	2.490	0.781
1940-62-40	2-1/2	5.870	6.870	2.312	4.875	2.060	2.500	2.995	0.906
1940-62-48	3	7.000	8.500	2.812	6.000	2.620	3.000	3.615	1.156



# 1959-P

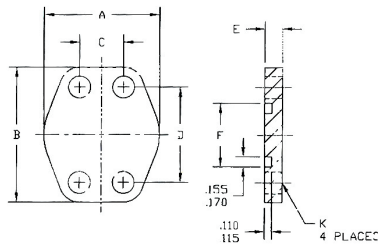
PIPE SADDLE WELD BLOCK CONNECTOR (O-RING FACE)



PART NO.	Pipe Size	Flange Size	A	B	C	D	E	F	G	H	J Min	J Max	K1 Drill
1959-P-12-12	3/4	3/4	1.690	2.560	0.875	1.875	1.310	0.630	0.532	0.750	1.250	1.255	0.406
1959-P-16-16	1	1	1.940	2.750	1.031	2.062	1.500	0.560	0.665	1.000	1.560	1.565	0.406
1959-P-20-20	1-1/4	1-1/4	2.190	3.120	1.188	2.312	1.810	0.630	0.837	1.250	1.750	1.755	0.469
1959-P-24-24	1-1/2	1-1/2	2.560	3.690	1.406	2.750	2.120	0.810	0.957	1.500	2.115	2.125	0.531
1959-P-32-32	2	2	3.060	4.000	1.688	3.062	2.620	1.060	1.200	2.000	2.490	2.500	0.531

# 1979-61

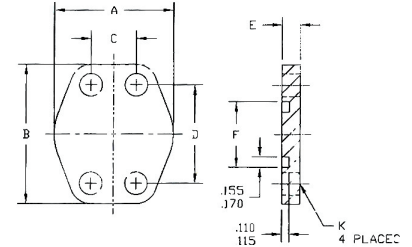
FLANGE SHIPPING PLATE - O-PSI CODE 61



PART NO.	Flange Size	A	B	C	D	E	F	K Drill
1979-61-08	1/2	1.810	2.120	0.688	1.500	0.330	1.000	0.344
1979-61-12	3/4	2.060	2.560	0.875	1.875	0.330	1.250	0.413
1979-61-16	1	2.310	2.750	1.031	2.063	0.330	1.560	0.413
1979-61-20	1-1/4	2.882	3.120	1.188	2.312	0.330	1.750	0.469
1979-61-24	1-1/2	3.250	3.690	1.406	2.750	0.330	2.115	0.531
1979-61-32	2	3.810	4.000	1.688	3.062	0.330	2.490	0.531
1979-61-48	3	5.160	5.310	2.438	4.188	0.330	3.615	0.656

# 1979-62

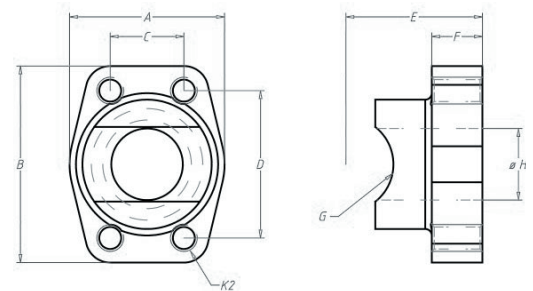
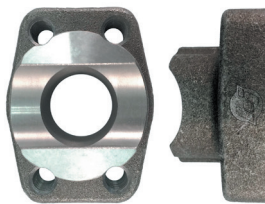
FLANGE SHIPPING PLATE - O-PSI CODE 62



PART NO.	Flange Size	A	B	C	D	E	F	K Drill
1979-62-08	1/2	1.940	2.190	0.718	1.594	0.330	1.000	0.354
1979-62-12	3/4	2.500	2.810	0.937	2.000	0.330	1.250	0.433
1979-62-16	1	2.750	3.190	1.093	2.250	0.330	1.560	0.531
1979-62-20	1-1/4	3.060	3.750	1.250	2.625	0.330	1.750	0.531
1979-62-24	1-1/2	3.750	4.440	1.437	3.125	0.330	2.115	0.689
1979-62-32	2	4.500	5.250	1.750	3.812	0.330	2.490	0.866

# 1960-P

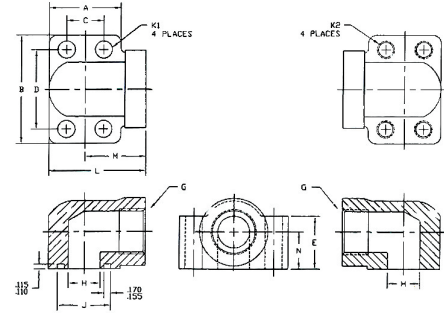
PIPE SADDLE WELD BLOCK CONNECTOR (FLAT FACE)



PART NO.	Pipe Size	Flange Size	A	B	C	D	E	F	G	H	J Min	J Max	K2 Thread
1960-P-12-12	3/4	3/4	1.690	2.560	0.875	1.875	1.310	0.630	0.532	0.750	1.250	1.255	3/8-16
1960-P-16-16	1	1	1.940	2.750	1.031	2.062	1.500	0.560	0.665	1.000	1.560	1.565	3/8-16
1960-P-20-20	1-1/4	1-1/4	2.190	3.120	1.188	2.312	1.810	0.630	0.837	1.250	1.750	1.755	7/16-14
1960-P-24-24	1-1/2	1-1/2	2.560	3.690	1.406	2.750	2.120	0.810	0.957	1.500	2.115	2.125	1/2-13
1960-P-32-32	2	2	3.060	4.000	1.688	3.062	2.620	1.060	1.200	2.000	2.490	2.500	1/2-13

# 1965-61

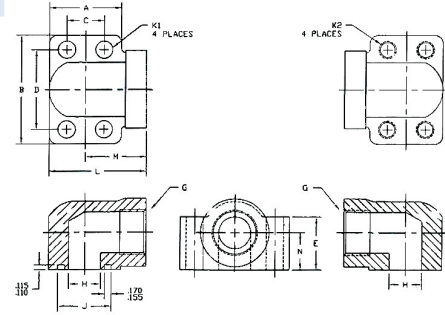
SAE PORT BLOCK 90 DEG ELBOW CODE 61 - O-RING FACE



PART NO.	Tube Size	Flange Size	A	B	C	D	E	G Thread	H	J	K1 Drill	L	M	N
1965-61-12-12	3/4	3/4	1.690	2.560	0.875	1.875	1.250	1-1/16-12	0.750	1.250	0.406	2.280	1.440	0.875
1965-61-16-16	1	1	1.940	2.750	1.031	2.062	1.500	1-5/16-12	1.000	1.560	0.406	2.620	1.660	1.062
1965-61-20-20	1-1/4	1-1/4	2.190	3.120	1.188	2.312	1.810	1-5/8-12	1.250	1.750	0.469	3.000	1.910	1.188
1965-61-24-24	1-1/2	1-1/2	2.560	3.690	1.406	2.750	2.000	1-7/8-12	1.500	2.115	0.531	3.330	2.050	1.312
1965-61-32-32	2	2	3.060	4.330	1.688	3.062	2.500	2-1/2-12	2.000	2.490	0.531	3.810	2.280	1.656
1966-61-32-32	2	2	3.060	4.330	1.688	3.062	2.500	2-1/2-12	2.000	2.490	0.531	3.810	2.280	1.656

# 1965-62

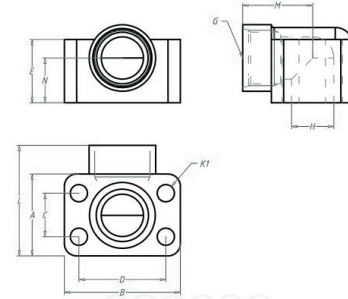
SAE PORT BLOCK 90 DEG ELBOW CODE 62 - O-RING FACE



PART NO.	Tube Size	Flange Size	A	B	C	D	E	G Thread	H	J	K1 Drill	L	M	N
1965-62-12-12	3/4	3/4	1.940	2.750	0.937	2.000	1.500	1-1/16-12	0.750	1.250	0.406	2.620	1.660	1.062
1965-62-16-16	1	1	2.190	3.120	1.093	2.250	1.810	1-5/16-12	1.000	1.560	0.492	3.000	1.910	1.188
1965-62-20-20	1-1/4	1-1/4	2.560	3.690	1.250	2.625	2.000	1-5/8-12	1.250	1.750	0.531	3.320	2.050	1.312
1965-62-24-24	1-1/2	1-1/2	3.060	4.330	1.437	3.125	2.500	1-7/8-12	1.500	2.115	0.656	3.810	2.280	1.656

# 1966-61

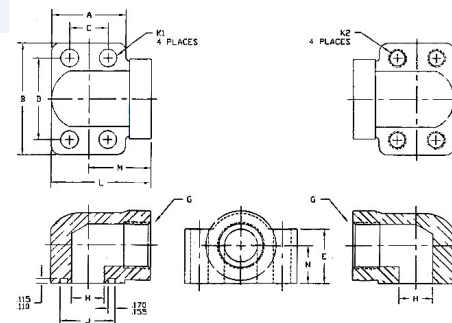
SAE PORT BLOCK 90 DEG ELBOW CODE 61 - FLAT FACE



PART NO.	Tube Size	Flange Size	A	B	C	D	E	G Thread	H	J	K1 Drill	L	M	N
1966-61-12-12	3/4	3/4	1.690	2.560	0.875	1.875	1.250	1-1/16-12	0.750	1.250	0.406	2.280	1.440	0.875
1966-61-16-16	1	1	1.940	2.750	1.031	2.062	1.500	1-5/16-12	1.000	1.560	0.406	2.620	1.660	1.062
1966-61-20-20	1-1/4	1-1/4	2.190	3.120	1.188	2.312	1.810	1-5/8-12	1.250	1.750	0.469	3.000	1.910	1.188
1966-61-24-24	1-1/2	1-1/2	2.560	3.690	1.406	2.750	2.000	1-7/8-12	1.500	2.115	0.531	3.330	2.050	1.312

# 1967-61

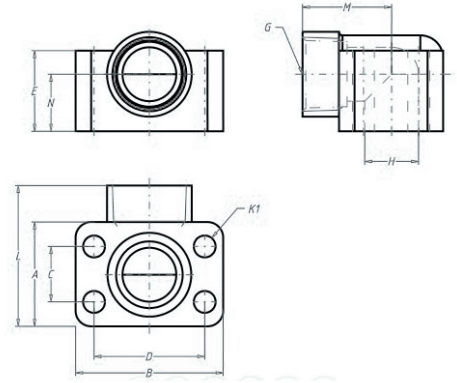
NPTF PORT BLOCK 90 DEG ELBOW CODE 61 - O-RING FACE



PART NO.	Pipe Size	Flange Size	A	B	C	D	E	G Thread	H	J	K1 Drill	L	M	N	
1967-61-12-12	3/4	3/4	1.690	2.560	0.875	1.875	1.250	3/4-14	0.750	1.250	0.406	3/8-16	2.280	1.440	0.875
1967-61-16-16	1	1	1.940	2.750	1.031	2.062	1.500	1-11/2	1.000	1.560	0.406	3/8-16	2.620	1.660	1.062
1967-61-20-20	1-1/4	1-1/4	2.190	3.120	1.188	2.312	1.810	1-1/4-11/2	1.250	1.750	0.469	7/16-14	3.000	1.910	1.188
1967-61-24-24	1-1/2	1-1/2	2.560	3.690	1.406	2.750	2.000	1-1/2-11/2	1.500	2.115	0.531	1/2-13	3.330	2.050	1.312
1967-61-32-32	2	2	3.060	4.330	1.688	3.062	2.500	2-11/2	2.000	2.490	0.531	1/2-13	3.810	2.280	1.656

# 1968-61

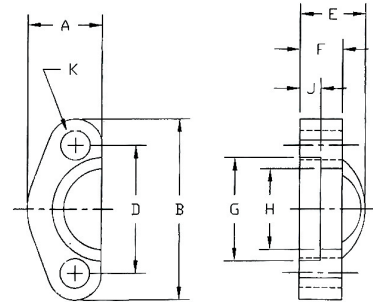
NPTF PORT BLOCK 90 DEG ELBOW CODE 61 - FLAT FACE



PART NO.	Pipe Size	Flange Size	A	B	C	D	E	G Thread	H	J	K1 Drill	L	M	N
1968-61-12-12	3/4	3/4	1.690	2.560	0.875	1.875	1.250	3/4-14	0.750	1.250	0.406	2.280	1.440	0.875
1968-61-16-16	1	1	1.940	2.750	1.031	2.062	1.500	1-11/2	1.000	1.560	0.406	2.3620	1.660	1.062
1968-61-20-20	1-1/4	1-1/4	2.190	3.120	1.188	2.312	1.810	1-1/4-11 1/2	1.250	1.750	0.469	3.000	1.910	1.188
1968-61-24-24	1-1/2	1-1/2	2.560	3.690	1.406	2.750	2.000	1-1/2-11 1/2	1.500	2.115	0.531	3.330	2.050	1.312
1968-61-32-32	2	2	3.060	4.330	1.688	3.062	2.500	2-11-1/2	2.000	2.490	0.531	3.810	2.280	1.656

# SPLIT & CAPTIVE FLANGES

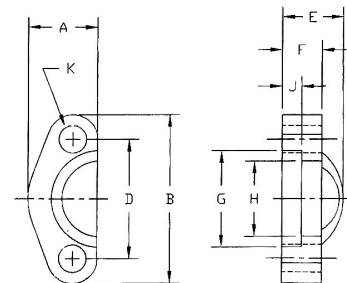
## 1951 SPLIT FLANGE CODE 61 (PAIRS)



PART NO.	Flange Kit	Flange Size	A ±.030	B ±.030	D ±.010	E ±.030	F ±.016	G ±.010	H ±.010	J ±.005	K ±.005
1951-08	1901-08	1/2	0.86	2.12	1.50	0.75	0.50	1.22	0.96	0.25	0.34
1951-12	1901-12	3/4	0.98	2.56	1.88	0.88	0.56	1.53	1.278	0.25	0.41
1951-16	1901-16-H	1	1.11	2.75	2.06	0.94	0.62	1.78	1.52	0.30	0.41
1951-20	1901-20-H	1-1/4	1.39	3.12	2.31	0.88	0.56	2.03	1.72	0.30	0.47
1951-24	1901-24-H	1-1/2	1.58	3.69	2.75	1.00	0.62	2.41	2.00	0.30	0.53
1951-32	1901-32-H	2	1.86	4.00	3.06	1.03	0.62	2.84	2.47	0.36	0.53
1951-40	1901-40-H	2-1/2	2.09	4.50	3.50	1.50	0.75	3.34	2.95	0.36	0.53
1951-48	1901-48-H	3	2.53	5.31	4.19	1.62	0.88	4.03	3.58	0.36	0.66
1951-56	1901-56-H	3-1/2	2.70	6.00	4.75	1.12	0.88	4.53	4.03	0.42	0.66
1951-64	1901-64-H	4	2.95	6.38	5.13	1.38	1.00	5.03	4.53	0.42	0.66

## 1951-H

SPLIT FLANGE HALVES CODE 61 (SINGLE HALF ONLY)

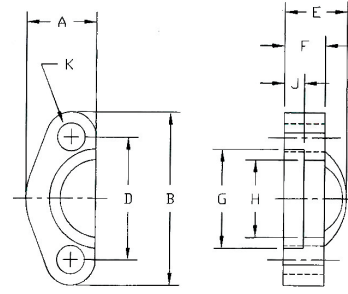


PART NO.	Flange Size	A ±.030	b ±.030	D ±.010	E ±.030	F ±.016	G ±.010	H ±.010	J ±.005	K ±.005
1951-08-H	1/2	0.86	2.12	1.50	0.75	0.50	1.22	0.96	0.25	0.34
1951-12-H	3/4	0.98	2.56	1.88	0.88	0.56	1.53	1.27	0.25	0.41
1951-16-H	1	1.11	2.75	2.06	0.94	0.62	1.78	1.52	0.30	0.41
1951-20-H	1-1/4	1.39	3.12	2.31	0.88	0.56	2.03	1.72	0.30	0.47
1951-24-H	1-1/2	1.58	3.69	2.75	1.00	0.62	2.41	2.00	0.30	0.53
1951-32-H	2	1.86	4.00	3.06	1.03	0.62	2.84	2.47	0.36	0.53
1951-40-H	2-1/2	2.09	4.50	3.50	1.50	0.75	3.34	2.95	0.36	0.53
1951-48-H	3	2.53	5.31	4.19	1.62	0.88	4.03	3.58	0.36	0.66



# 1952

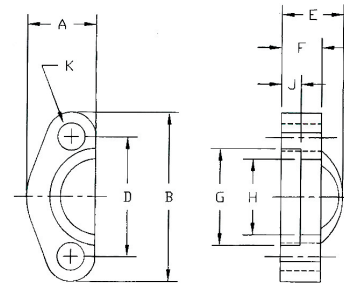
SPLIT FLANGE CODE 62 (PAIRS)



PART NO.	Flange Kit	Flange Size	A ±.030	B ±.030	D ±.010	E ±.030	F ±.016	G ±.010	H ±.010	J ±.005	K ±.005
1952-12	1902-12	3/4	1.14	2.81	2.00	1.12	0.75	1.66	1.28	0.33	0.41
1952-16	1902-16	1	1.33	3.19	2.25	1.31	0.94	1.91	1.53	0.36	0.47
1952-20	1902-20	1-1/4	1.48	3.75	2.63	1.50	1.06	2.16	1.75	0.39	0.53
1952-24	1902-24	1-1/2	1.83	4.44	3.13	1.69	1.19	2.53	2.03	0.48	0.66
1952-32	1902-32	2	2.20	5.25	3.81	2.06	1.44	3.16	2.66	0.48	0.78

# 1952-H

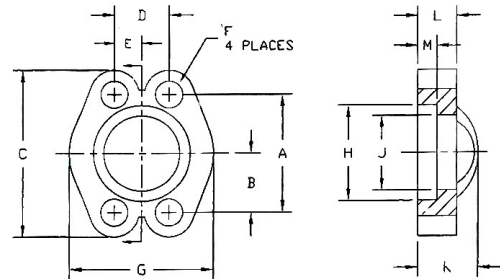
SPLIT FLANGE HALVES CODE 62 (SINGLE HALF ONLY)



PART NO.	Flange Size	A ±.030	b ±.030	D ±.010	E ±.030	F ±.016	G ±.010	H ±.010	J ±.005	K ±.005
1952-12-H	3/4	1.14	2.81	2.00	1.12	0.75	1.66	1.28	0.33	0.41
1952-16-H	1	1.33	3.19	2.25	1.31	0.94	1.91	1.53	0.36	0.47
1952-20-H	1-1/4	1.48	3.75	2.63	1.50	1.06	2.16	1.75	0.39	0.53
1952-24-H	1-1/2	1.83	4.44	3.13	1.69	1.19	2.53	2.03	0.48	0.66
1952-32-H	2	2.20	5.25	3.81	2.06	1.44	3.16	2.66	0.48	0.78

# 1903-61

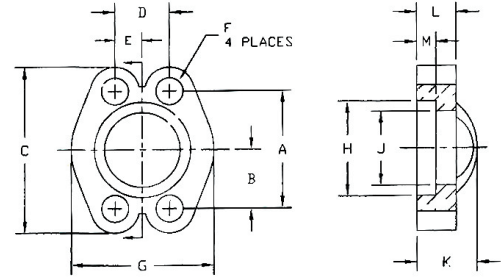
CAPTIVE FLANGE - CODE 61 (DRILLED HOLES)



PART NO.	FLANGE SIZE	A ±.010	B ±.010	C ±.030	D ±.010	E ±.010	F ±.010	F Thread	G ±.030	H ±.010	J ±.010	K ±.010	L ±.010	M ±.005
1903-61-08	1/2	1.500	0.750	2.12	0.688	0.344	0.344	5/16-18	1.81	1.219	0.955	0.75	0.50	0.245
1903-61-12	3/4	1.875	0.938	2.56	0.875	0.438	0.406	3/8-16	2.06	1.531	1.265	0.88	0.56	0.245
1903-61-16	1	2.062	1.031	2.75	1.031	0.516	0.406	3/8-16	2.31	1.781	1.515	0.94	0.62	0.295
1903-61-20	1 1/4	2.312	1.156	3.12	1.188	0.594	0.469	7/16-14	2.88	2.031	1.720	0.88	0.56	0.295
1903-61-24	1 1/2	2.750	1.375	3.69	1.406	0.703	0.531	1/2-13	3.25	2.406	2.000	1.00	0.62	0.295
1903-61-32	2	3.062	1.531	4.00	1.688	0.844	0.531	1/2-13	3.81	2.844	2.470	1.03	0.62	0.355
1903-61-40	2 1/2	3.500	1.750	4.50	2.000	1.000	0.531	1/2-13	4.28	3.344	2.950	1.50	0.75	0.355
1903-61-48	3	4.188	2.094	5.31	2.438	1.219	0.656	5/8-11	5.16	4.031	3.580	1.62	0.88	0.355
1903-61-56	3 1/2	4.750	2.375	6.00	2.750	1.375	0.656	5/8-11	5.50	4.531	4.030	1.12	0.88	0.422
1903-61-64	4	5.125	2.562	6.38	3.062	1.531	0.656	5/8-11	6.00	5.031	4.530	1.38	1.00	0.422

# 1903-62

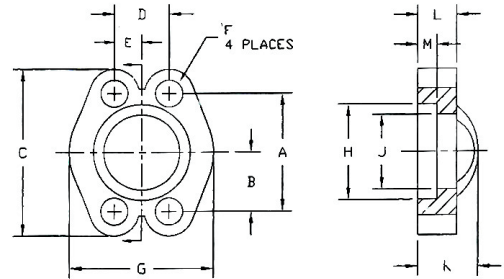
CAPTIVE FLANGE - CODE 62 (DRILLED HOLES)



PART NO.	FLANGE SIZE	A ±.010	B ±.010	C ±.030	D ±.010	E ±.010	F ±.010	F Thread	G ±.030	H ±.010	J ±.010	K ±.010	L ±.010	M ±.005
1903-62-12	3/4	2.000	1.000	2.81	0.938	0.469	0.406	3/8-16	2.38	1.656	1.280	1.12	0.75	0.325
1903-62-16	1	2.250	1.125	3.19	1.094	0.547	0.469	7/16-14	2.75	1.906	1.530	1.31	0.94	0.355
1903-62-20	1 1/4	2.625	1.313	3.75	1.250	0.625	0.531	1/2-13	3.06	2.156	1.750	1.50	1.06	0.385
1903-62-24	1 1/2	3.125	1.563	4.44	1.438	0.719	0.656	5/8-11	3.75	2.531	2.030	1.69	1.19	0.475
1903-62-32	2	3.812	1.906	5.25	1.750	0.875	0.781	3/4-10	4.50	3.156	2.660	2.06	1.44	0.475

# 1904-61

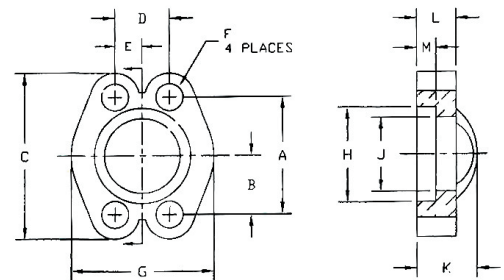
CAPTIVE FLANGE - CODE 61 (TAPPED HOLES)



PART NO.	FLANGE SIZE	A ±.010	B ±.010	C ±.030	D ±.010	E ±.010	F ±.010	F Thread	G ±.030	H ±.010	J ±.010	K ±.010	L ±.010	M ±.005
1904-61-08	1/2	1.500	0.750	2.12	0.688	0.344	0.344	5/16-18	1.81	1.219	0.955	0.75	0.50	0.245
1904-61-12	3/4	1.875	0.938	2.56	0.875	0.438	0.406	3/8-16	2.06	1.531	1.265	0.88	0.56	0.245
1904-61-16	1	2.062	1.031	2.75	1.031	0.516	0.406	3/8-16	2.31	1.781	1.515	0.94	0.62	0.295
1904-61-20	1 1/4	2.312	1.156	3.12	1.188	0.594	0.469	7/16-14	2.88	2.031	1.720	0.88	0.56	0.295
1904-61-24	1 1/2	2.750	1.375	3.69	1.406	0.703	0.531	1/2-13	3.25	2.406	2.000	1.00	0.62	0.295
1904-61-32	2	3.062	1.531	4.00	1.688	0.844	0.531	1/2-13	3.81	2.844	2.470	1.03	0.62	0.355
1904-61-40	2 1/2	3.500	1.750	4.50	2.000	1.000	0.531	1/2-13	4.28	3.344	2.950	1.50	0.75	0.355
1904-61-48	3	4.188	2.094	5.31	2.438	1.219	0.656	5/8-11	5.16	4.031	3.580	1.62	0.88	0.355
1904-61-56	3 1/2	4.750	2.375	6.00	2.750	1.375	0.656	5/8-11	5.50	4.531	4.030	1.12	0.88	0.422
1904-61-64	4	5.125	2.562	6.38	3.062	1.531	0.656	5/8-11	6.00	5.031	4.530	1.38	1.00	0.422

# 1904-62

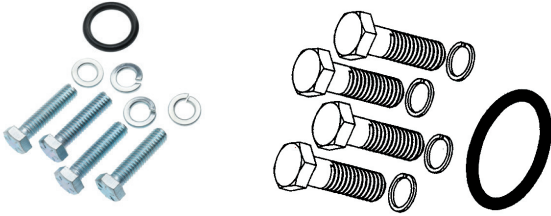
CAPTIVE FLANGE - CODE 62 (TAPPED HOLES)



PART NO.	FLANGE SIZE	A ±.010	B ±.010	C ±.030	D ±.010	E ±.010	F ±.010	F Thread	G ±.030	H ±.010	J ±.010	K ±.010	L ±.010	M ±.005
1904-62-12	3/4	2.000	1.000	2.81	0.938	0.469	0.406	3/8-16	2.38	1.656	1.280	1.12	0.75	0.325
1904-62-16	1	2.250	1.125	3.19	1.094	0.547	0.469	7/16-14	2.75	1.906	1.530	1.31	0.94	0.355
1904-62-20	1 1/4	2.625	1.313	3.75	1.250	0.625	0.531	1/2-13	3.06	2.156	1.750	1.50	1.06	0.385
1904-62-24	1 1/2	3.125	1.563	4.44	1.438	0.719	0.656	5/8-11	3.75	2.531	2.030	1.69	1.19	0.475
1904-62-32	2	3.812	1.906	5.25	1.750	0.875	0.781	3/4-10	4.50	3.156	2.660	2.06	1.44	0.475

# MOUNTING KITS

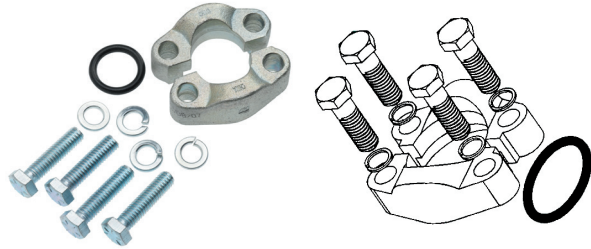
## 1900-61 HEX HEAD MOUNTING KIT - CODE 61



PART NO.	Flange Size
1900-61-08-K	1/2
1900-61-12-K	3/4
1900-61-16-K	1
1900-61-20-K	1-1/4
1900-61-24-K	1-1/2
1900-61-32-K	2
1900-61-40-K	2-1/2
1900-61-48-K	3
1900-61-56-K	3-1/2
1900-61-64-K	4

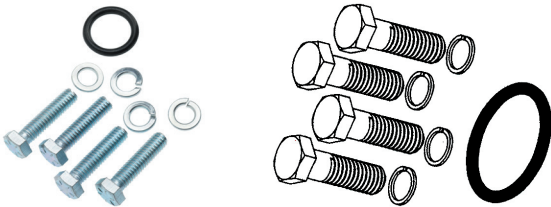
PART NO.	Flange Size
1901-24	1 1/2
1901-32	2
1901-40	2-1/2
1901-48	3
1901-56	3-1/2
1901-64	4

## 1902 SPLIT FLANGE KIT - CODE 62



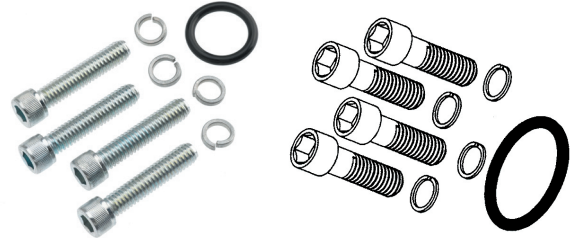
PART NO.	Flange Size
1902-08	1/2
1902-12	3/4
1902-16	1
1902-20	1 1/4
1902-24	1 1/2
1902-32	2

## 1900-62 HEX HEAD MOUNTING KIT - CODE 62



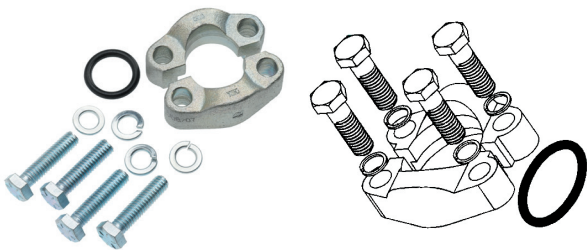
PART NO.	Flange Size
1900-62-08-K	1/2
1900-62-12-K	3/4
1900-62-16-K	1
1900-62-20-K	1-1/4
1900-62-24-K	1-1/2
1900-62-32-K	2

## 1990-61 SOCKET HEAD MOUNTING KIT - CODE 61



PART NO.	Flange Size
1990-08-05X1.50	1/2
1990-12-06X1.50	3/4
1990-16-06X1.75	1
1990-20-07X1.75	1-1/4
1990-24-08X2.00	1-1/2
1990-32-08X2.00	2
1990-40-08X2.50	2-1/2
1990-48-10X2.50	3
1990-56-10X2.75	3-1/2
1990-64-10X2.75	4

## 1901 SPLIT FLANGE KIT - CODE 61

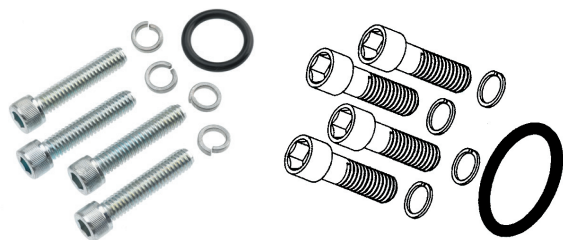


PART NO.	Flange Size
1901-08	1/2
1901-12	3/4
1901-16	1
1901-20	1 1/4

Continued...

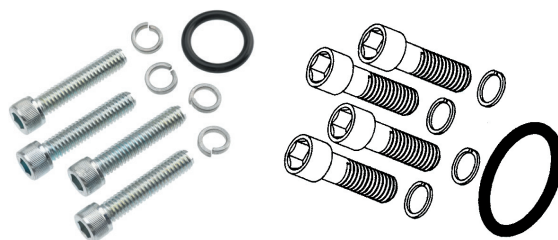


## 1990-62 SOCKET HEAD MOUNTING KIT - CODE 62



PART NO.	Flange Size
1990-08-05X2.00	1/2
1990-12-06X2.00	3/4
1990-16-07X2.50	1
1990-20-08X2.50	1-1/4
1990-24-10X3.00	1-1/2
1990-32-12X3.00	2

## 1990-M SOCKET HEAD MOUNTING KIT METRIC



PART NO.	Flange Size (mm)
1990-M08-K	8
1990-M10-K	10
1990-M12-K	12
1990-M16-K	16
1990-M20-K	20
1990-M24-K	24
1990-M30-K	30

<b>1700</b> MJ-FLANGE STRAIGHT CODE 61	PAGE: 3	<b>1936-62</b> FLAT SOCKET BLOCK PIPE CODE 62 (FLAT FACE)	PAGE: 14
<b>1703</b> MJ-FLANGE 45 DEG ELBOW CODE 61	PAGE: 4	<b>1937-61</b> FLAT SOCKET BLOCK TUBE CODE 61 (O-RING FACE)	PAGE: 15
<b>1703-FG</b> MJ-FLANGE 45 DEG CODE 61	PAGE: 4	<b>1937-62</b> FLAT SOCKET BLOCK TUBE CODE 62 (O-RING FACE)	PAGE: 15
<b>1704</b> MJ-FLANGE 90 DEG CODE 61	PAGE: 5	<b>1938-61</b> FLAT SOCKET BLOCK TUBE CODE 61 (FLAT FACE)	PAGE: 15
<b>1704-FG</b> MJ-FLANGE 90 DEG CODE 61	PAGE: 5	<b>1938-62</b> FLAT SOCKET BLOCK TUBE CODE 62 (FLAT FACE)	PAGE: 16
<b>1710</b> MB-FLANGE STRAIGHT	PAGE: 3	<b>1940-61</b> FLANGE SPACER WITH SIDE GAGE PORTS CODE 61	PAGE: 16
<b>1724</b> FLANGE PLUGS - CODE 61	PAGE: 7	<b>1940-62</b> FLANGE SPACER WITH SIDE GAGE PORTS CODE 62	PAGE: 16
<b>1800</b> MJ-FLANGE STRAIGHT CODE 62	PAGE: 3	<b>1942-61</b> PLUG BLOCK - CODE 61 (O-RING FACE)	PAGE: 9
<b>1803</b> MJ-FLANGE 45 DEG CODE 62	PAGE: 5	<b>1942-62</b> PLUG BLOCK - CODE 62 (O-RING FACE)	PAGE: 9
<b>1803-FG</b> MJ-FLANGE 45 DEG CODE 62	PAGE: 5	<b>1943-61</b> PLUG BLOCK - CODE 61 (FLAT FACE)	PAGE: 9
<b>1804</b> MJ-FLANGE 90 DEG CODE 62	PAGE: 6	<b>1943-62</b> PLUG BLOCK - CODE 62 (FLAT FACE)	PAGE: 10
<b>1804-FG</b> MJ-FLANGE 90 DEG CODE 62	PAGE: 6	<b>1951</b> SPLIT FLANGE CODE 61 (PAIRS)	PAGE: 19
<b>1810</b> MB-FLANGE STRAIGHT CODE 62	PAGE: 3	<b>1951-H</b> SPLIT FLANGE HALVES CODE 61 (SINGLE HALF ONLY)	PAGE: 19
<b>1824</b> FLANGE PLUGS - CODE 62	PAGE: 7	<b>1952</b> SPLIT FLANGE CODE 62 (PAIRS)	PAGE: 20
<b>1900-61</b> HEX HEAD MOUNTING KIT - CODE 61	PAGE: 22	<b>1952-H</b> SPLIT FLANGE HALVES CODE 62 (SINGLE HALF ONLY)	PAGE: 20
<b>1900-62</b> HEX HEAD MOUNTING KIT - CODE 62	PAGE: 22	<b>1959-P</b> PIPE SADDLE WELD BLOCK CONNECTOR (O-RING FACE)	PAGE: 17
<b>1900-M</b> HEX HEAD MOUNTING KIT - METRIC	PAGE:	<b>1960-P</b> PIPE SADDLE WELD BLOCK CONNECTOR (FLAT FACE)	PAGE: 17
<b>1901</b> SPLIT FLANGE KIT - CODE 61	PAGE: 22	<b>1965-61</b> SAE PORT BLOCK 90 DEG ELBOW CODE 61 - O-RING FACE	PAGE: 18
<b>1902</b> SPLIT FLANGE KIT - CODE 62	PAGE: 22	<b>1965-62</b> SAE PORT BLOCK 90 DEG ELBOW CODE 62 - O-RING FACE	PAGE: 18
<b>1903-61</b> CAPTIVE FLANGE - CODE 61 (DRILLED HOLES)	PAGE: 20	<b>1966-61</b> SAE PORT BLOCK 90 DEG ELBOW CODE 61 - FLAT FACE	PAGE: 18
<b>1903-62</b> CAPTIVE FLANGE - CODE 62 (DRILLED HOLES)	PAGE: 21	<b>1967-61</b> NPTF PORT BLOCK 90 DEG ELBOW CODE 61 - O-RING FACE	PAGE: 18
<b>1904-61</b> CAPTIVE FLANGE - CODE 61 (TAPPED HOLES)	PAGE: 21	<b>1968-61</b> NPTF PORT BLOCK 90 DEG ELBOW CODE 61 - FLAT FACE	PAGE: 19
<b>1904-62</b> CAPTIVE FLANGE - CODE 62 (TAPPED HOLES)	PAGE: 21	<b>1979-61</b> FLANGE SHIPPING PLATE - 0-PSI CODE 61	PAGE: 17
<b>1914-61</b> CONNECTOR PLATE - CODE 61	PAGE: 10	<b>1979-62</b> FLANGE SHIPPING PLATE - 0-PSI CODE 62	PAGE: 17
<b>1914-62</b> CONNECTOR PLATE - CODE 62	PAGE: 10	<b>1990-61</b> SOCKET HEAD MOUNTING KIT - CODE 61	PAGE: 22
<b>1927-61</b> NPTF PORT BLOCK - CODE 61 (O-RING FACE)	PAGE: 10	<b>1990-62</b> SOCKET HEAD MOUNTING KIT - CODE 62	PAGE: 23
<b>1927-62</b> NPTF PORT BLOCK - CODE 62 (O-RING FACE)	PAGE: 11	<b>1990-M</b> SOCKET HEAD MOUNTING KIT METRIC	PAGE: 23
<b>1928-61</b> NPTF PORT BLOCK - CODE 61 (FLAT FACE)	PAGE: 11	<b>3300-61</b> TUBE BRAZE FLANGE HEAD - CODE 61 (O-RING FACE)	PAGE: 8
<b>1928-62</b> NPTF PORT BLOCK - CODE 62 (FLAT FACE)	PAGE: 11	<b>3300-62</b> TUBE BRAZE FLANGE HEAD - CODE 62 (O-RING FACE)	PAGE: 8
<b>1929-61</b> SAE PORT BLOCK - CODE 61 (O-RING FACE)	PAGE: 12	<b>3301-61</b> TUBE BRAZE FLANGE HEAD - CODE 61 (FLAT FACE)	PAGE: 8
<b>1929-62</b> SAE PORT BLOCK - CODE 62 (O-RING FACE)	PAGE: 12	<b>3301-62</b> TUBE BRAZE FLANGE HEAD - CODE 62 (FLAT FACE)	PAGE: 8
<b>1930-61</b> SAE PORT BLOCK - CODE 61 (FLAT FACE)	PAGE: 12	<b>FS1700</b> MFS-FLANGE STRAIGHT - CODE 61	PAGE: 4
<b>1930-62</b> SAE PORT BLOCK - CODE 62 (FLAT FACE)	PAGE: 12	<b>FS1703-FG</b> MJ-FLANGE 45 DEG CODE 61	PAGE: 6
<b>1933</b> FLAT SOCKET BLOCK PIPE 500PSI (O-RING FACE)	PAGE: 13	<b>FS1704-FG</b> MFS-FLANGE 90 DEG CODE 61	PAGE: 6
<b>1934</b> FLAT SOCKET BLOCK PIPE 500PSI (FLAT FACE)	PAGE: 13	<b>FS1800</b> MFS-FLANGE STRT CODE 62	PAGE: 4
<b>1935-61</b> FLAT SOCKET BLOCK PIPE CODE 61 (O-RING FACE)	PAGE: 13	<b>FS1803-FG</b> MJ-FLANGE 45 DEG CODE 62	PAGE: 6
<b>1935-62</b> FLAT SOCKET BLOCK PIPE CODE 62 (O-RING FACE)	PAGE: 14	<b>FS1804-FG</b> MFS-FLANGE 90 DEG CODE 62	PAGE: 7
<b>1936-61</b> FLAT SOCKET BLOCK PIPE CODE 61 (FLAT FACE)	PAGE: 14	<b>FS1805</b> MFS-MFS-FLANGE CODE 62	PAGE: 7

## US DISTRIBUTION CENTERS

**ATLANTA** TOLL FREE: 800.458.1988  
FAX: 770.987.0926

**CLEVELAND** TOLL FREE: 800.331.1523  
FAX: 440.248.9375

**DALLAS** TOLL FREE: 800.443.9937  
FAX: 972.660.6638

**HOUSTON** TOLL FREE: 800.443.9937  
FAX: 713.808.9477

**LOS ANGELES** TOLL FREE: 800.942.5321  
FAX: 949.595.0933

**SEATTLE** TOLL FREE: 800.445.7107  
FAX: 253.826.4884

## CANADIAN DISTRIBUTION CENTERS

**CALGARY** TOLL FREE: 844.379.9300  
FAX: 403.279.4583

**MONTREAL** PHONE: 514.339.1139  
FAX: 514.339.2601

**TORONTO** TOLL FREE: 855.267.9013  
FAX: 905.673.8788

**VANCOUVER** PHONE: 604.420.6540  
FAX: 604.420.6545

**WINNIPEG** PHONE: 204.694.8068  
FAX: 204.694.8113

## INT'L DISTRIBUTION CENTERS

**BIRMINGHAM, UK** PHONE: 01922 650039  
FAX: 01922 626179

**SHANGHAI, CN** PHONE: +86 21 57391155  
FAX: 86 21 57390688



### CORPORATE HEADQUARTERS

6701 Cochran Road  
Solon, Ohio 44139 USA

### DOMESTIC MANUFACTURING

26420 Century Corners Parkway  
Cleveland, Ohio 44132 USA

PHONE: 440.248.1880

TOLL FREE: 888.331.1523

FAX: 440.248.7282

### CANADIAN MANUFACTURING

290 Courtneypark Drive East  
Mississauga, ON – L5T 2S5

PHONE: 905.564.2600

TOLL FREE: 905.612.0400

FAX: 905.564.2619



[brennaninc.com](http://brennaninc.com)