



Refining Industry

Fluid transfer solutions



Continental.
Worldwide. World-class. World-changing.





Continental is a world leader in industrial rubber and plastic products and has the largest global footprint of any rubber products manufacturer. Our knowledge and expertise allow us to deliver the most innovative and highest quality products on the market. Plus, our extensive problem-solving experience across multiple industries and applications enables us to share innovations over our entire product offering. Which means we can deliver unexpected solutions and advanced improvements in situations where others can't.

Continental offers a full breadth of industrial rubber products including:

- › Industrial Hose
- › Conveyor Belts
- › Power Transmission Belts
- › Hydraulic Hose and Fittings
- › Air Springs
- › Rubber Track





BUILD YOUR OWN ASSEMBLIES

	APPLICATION	CUSTOMIZATION	CONTINENTAL RECOMMENDED FITTINGS
FLEXSTEEL 250 EPDM-20			Campbell Female Ground Joint Wing Nut, Female Ground Joint Low Profile Nut, Male NPT, Male NPT Swivel
FLEXSTEEL 250 STEAM			Campbell Female Ground Joint Wing Nut, Female Ground Joint Low Profile Nut, Male NPT, Male NPT Swivel
FLEXSTEEL 250 CB STEAM			Bolt-on Style Only
FLEXSTEEL 250 CB EXTREME CRIMP STEAM			Campbell Female Ground Joint Wing Nut, Female Ground Joint Low Profile Nut, Male NPT, Male NPT Swivel
HYDROCARBON DRAIN - BRAIDED			Continental B2 Male NPT, Campbell Air Hammer Coupling
HYDROCARBON DRAIN - HAND-BUILT			Campbell Air Hammer Coupling
FABCHEM			Continental Insta-Lock™, Campbell ChemJoint™
EXTREMEFLEX PETROLEUM TRANSFER			Continental Insta-Lock™
FLEXDOCK 225			Custom factory assemblies with built-in ends: fixed or floating flanges. Contact customer service for additional options.
NITROGEN SERVICE HOSE			Continental UC Male NPTF, Campbell Bowes/Thor
GORILLA			Continental UC Male NPTF
FRONTIER			Continental UC Male NPTF

Full color and branding customization available upon request.

Pushing the boundaries of what's possible.

Continental is recognized worldwide as a leader in the design, manufacture and supply of technically advanced hose for the oil and gas refinery industry. We continue to create new developments for the field by incorporating advanced technology into our products by pushing the boundaries of what's possible. Our products will always meet or exceed the highest specifications, the strictest environmental mandates and perform in the most extreme conditions.

APPLICATION AREAS



Crimp Specs Available

Crimp Spec Location	3/16"	1/4"	3/8"	1/2"	5/8"	3/4"	1"	1 1/4"	1 1/2"	2"	2 1/2"	3"	3 1/2"	4"	6"	12"
INH Assembly Manual						✓	✓									
INH Assembly Manual				✓		✓	✓	+	+	✓						
N/A				+		+	+	+	+	+						
INH Assembly Manual						✓										
INH Assembly Manual and Campbell Crimp Specs for Air Hammer Couplings						✓	✓									
Campbell Crimp Specs						✓										
INH Assembly Manual				✓		✓	✓	✓	✓	✓	✓	✓	✓	✓		
INH Assembly Manual				✓		✓	✓	✓	✓	✓	✓	✓	✓	✓	✓	
Built-in										✓	✓	✓	✓	✓	✓	✓
INH Assembly Manual and Campbell Crimp Specs for Bowes/Thor						✓										
INH Assembly Manual		✓	✓	✓	✓	✓	✓	✓	✓	✓						
INH Assembly Manual	✓	✓	✓	✓	✓	✓	✓	✓	✓	✓						

+ Size Available

✓ Size and Crimp Specs Available

Ready2Go Assemblies Available

The Right Solutions.

Exactly where you need them.

CRUDE



ATMOSPHERIC DISTILLATION



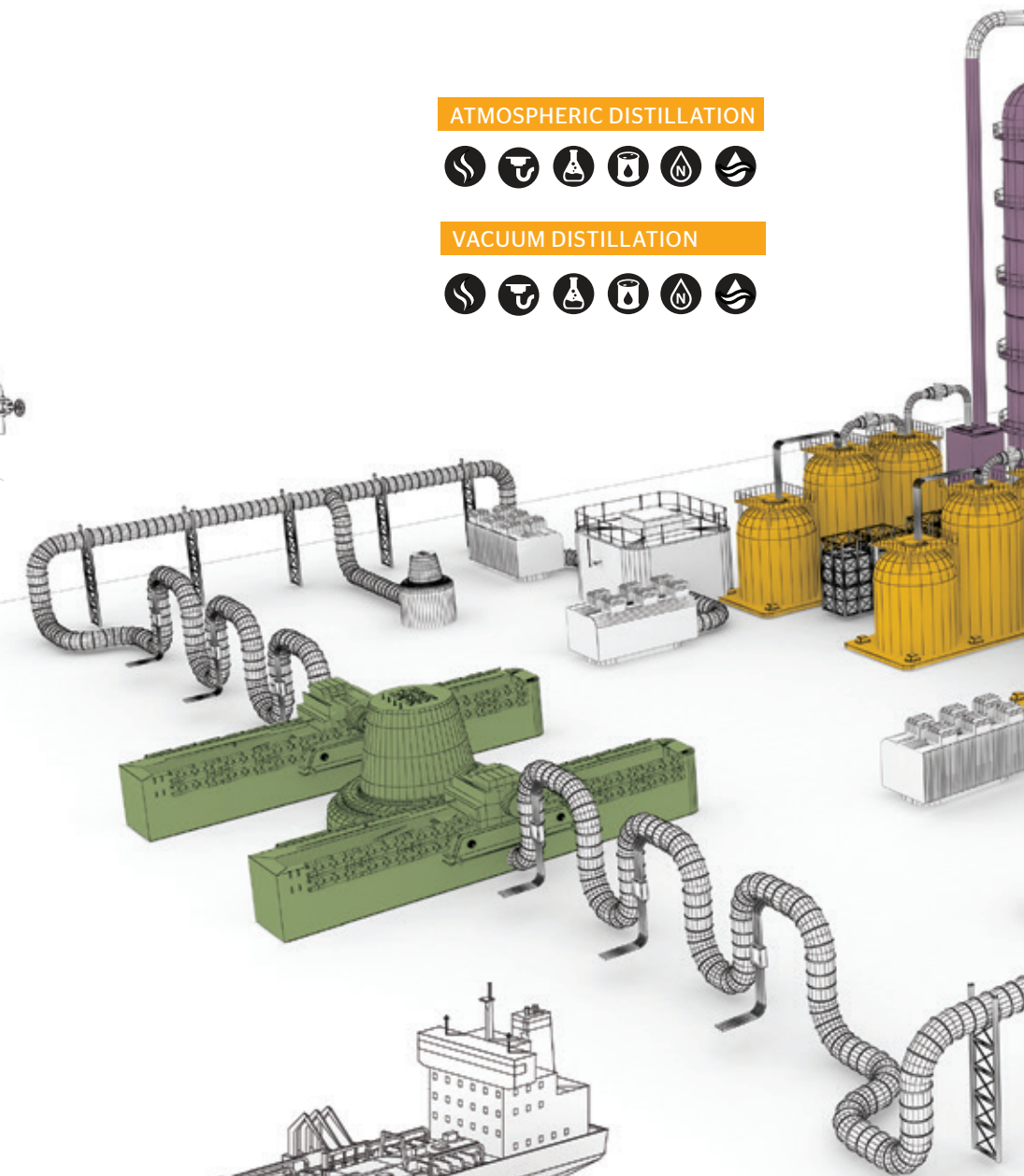
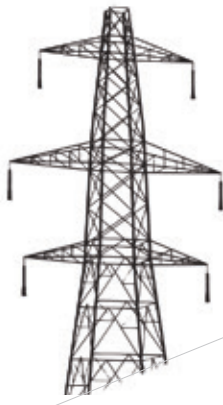
VACUUM DISTILLATION



COKER



UTILITIES



TERMINAL



APPLICATION AREAS



Steam



Hydrocarbon
Drain



Chemical



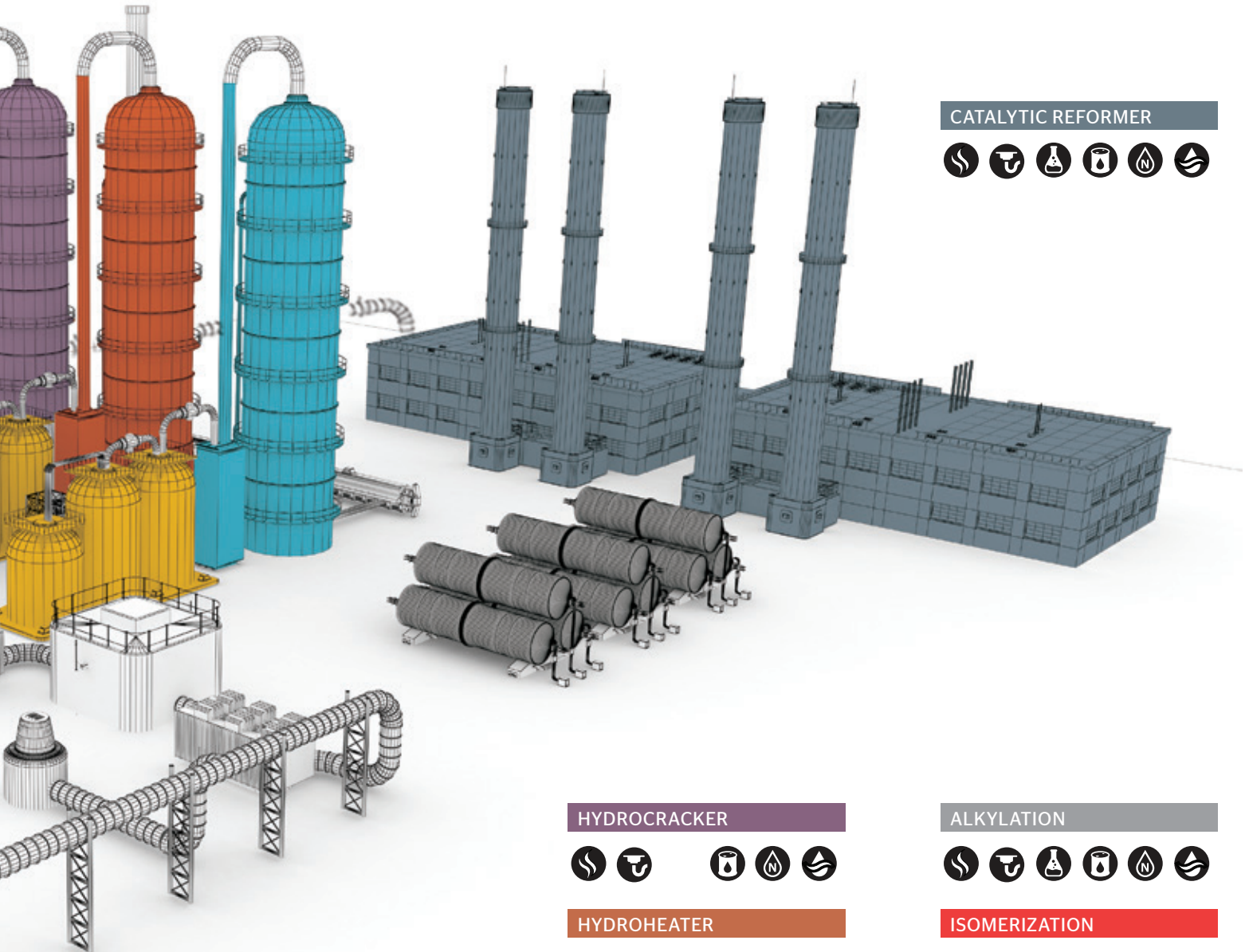
Petroleum



Nitrogen



Air & Water



CATALYTIC REFORMER



HYDROCRACKER



HYDROHEATER



FCC FEED HYDROTREATER



TANK FARM



ALKYLATION



ISOMERIZATION



FLUID CATALYTIC CRACKER



WASTEWATER





Steam

Atmospheric Distillation
 Vacuum Distillation
 Hydrocracker
 Hydrotreater
 Coker
 Alkylation
 Isomerization
 FCC Feed Hydrotreater
 Fluid Catalytic Cracker
 Catalytic Reformer
 Tank Farm
 Wastewater
 Utilities



Flexsteel® 250 EPDM-20

Application: The Flexsteel® 250 EPDM-20 features the superior performance of the Flexsteel 250 Steam Hose series enhanced with the increased design ratio of 20:1. This exceeds the ARPM safety standard and makes steam operations more secure and user-friendly. The hose has a maximum operating pressure of 250 psi with a temperature range of -40°F to 450°F.

- › Qualified crimped solution, proven safety and cost advantages over bolt-on style coupled assemblies
- › Best performing steam hose on the market for steam endurance testing
- › 20:1 safety factor, twice the ARPM recommendation for steam hose

Tube: Pyrosyn® synthetic rubber

Cover: Red Wrapped Pyrosyn®, pin-pricked

Reinforcement: Braided steel wire
 (3/4" and larger have two steel wire braids)

Temperature: -40°F to 450°F (-40°C to 232°C)

Couplings: Campbell Female

Ground Joint Wing Nut, Female

Ground Joint Low Profile Nut,
 Male NPT, Male NPT Swivel

Order Code: 539-486



Coupled assemblies available.

SAP #	ID		Nom. OD		Max. WP		Weight	
	in.	mm	in.	mm	psi	MPa	lb./ft.	kg/m
20559161	3/4	19.1	1.28	32.5	250	1.72	0.59	0.83
20736602	1	25.4	1.63	41.4	250	1.72	0.95	1.43

Hose design ratio (burst pressure) 20:1.



Flexsteel® 250 Steam

Application: Flexsteel® 250 is for cleaning, heat control, fire prevention, pumping, thawing, blow-out service, steam pumps and hoists in open-end or permanent installation operations. It is used in refineries, shipyards, chemical plants, steel mills, foundries and heavy industrial applications where high strength is required and where severe environmental conditions are encountered.

- › Crimped solution, proven safety and cost advantages over bolt-on style coupled assemblies
- › Superior performance for steam exposure testing
- › Exceeds 10:1 ARPM recommended safety factor

Tube: Pyrosyn® synthetic rubber

Cover: Black or red Pyrosyn®, pin-pricked

Reinforcement: One or two steel wire braids

Temperature: -40°F to 450°F (-40°C to 232°C)

Couplings: Campbell Female Ground Joint
 Wing Nut, Female Ground Joint Low Profile Nut,
 Male NPT, Male NPT Swivel

Order Codes:

539-070 (black)

539-076 (red)

539-470 (black wrapped)

539-476 (red wrapped)

559-201 (2" black wrapped)

559-202 (2" red wrapped)



Coupled assemblies available.

SAP #		ID		Nom. OD		Max. WP		Weight			
Black	Red	Black Wrapped	Red Wrapped	in.	mm	in.	mm	psi	MPa	lb./ft.	kg/m
20023390	20136859	20575082	20767531	1/2	12.7	1.06	26.9	250	1.72	0.45	0.67
20023401	20023462	20757055	20757277	3/4	19.1	1.28	32.5	250	1.72	0.56	0.83
20023419	20024994	20760526	20590425	1	25.4	1.63	41.4	250	1.72	0.91	1.35
		20615488	20620044	1¼	31.8	1.88	47.8	250	1.72	1.02	1.52
		20575082	20620048	1½	38.1	2.12	53.8	250	1.72	1.23	1.83
		20766307	20766308	2	50.8	2.58	65.5	250	1.72	1.60	2.38

Hose design ratio (burst pressure) 10:1.



Flexsteel® 250 CB Steam

Application: Flexsteel® 250 CB is used for cleaning, heat control, fire prevention, pumping, thawing, blowout service, steam pumps and hoists in open-end or permanent installation operations. It is used in refineries, shipyards, chemical plants, steel mills, foundries and heavy industrial applications where high strength is required and where severe environmental conditions are encountered.

- › Pure chlorobutyl tube compound
- › Exceeds 10:1 ARPM recommended safety factor
- › Superior performance for steam exposure testing

Tube: Chlorobutyl synthetic rubber

Cover: Red or black Pyrosyn®, pin-pricked

Reinforcement: Braided steel wire (3/4" and larger have two steel wire braids)

Temperature: -40°F to 425°F (-40°C to 218°C)

Couplings: Bolt-on Style Couplings

Order Codes:

539-170 (¾" black)

539-176 (½"-1" red)

581-176 (1¼"-2" red)



Coupled assemblies available.

SAP #		ID		Nom. OD		Max. WP		Weight	
Red	Black	in.	mm	in.	mm	psi	MPa	lb./ft.	kg/m
20050829		1/2	12.7	1.00	25.4	250	1.72	0.40	0.60
20024094	20050195	3/4	19.1	1.31	33.3	250	1.72	0.64	0.95
20045991		1	25.4	1.56	39.6	250	1.72	0.77	1.15
20045770		1¼	31.8	1.75	44.5	250	1.72	1.06	1.58
20046224		1½	38.1	2.00	50.8	250	1.72	1.42	2.11
20046225		2	50.8	2.50	63.5	250	1.72	1.71	2.54

Hose design ratio (burst pressure) 10:1.



Flexsteel® 250 CB Extreme Crimp Steam

Application: Continental is pleased to announce the Flexsteel® 250 CB Extreme Crimp Steam Hose, the only Continental chlorobutyl steam hose with an enhanced over-the-cover crimp coupling solution. The hose is rated to a maximum operating pressure of 250 psi, and its temperature range is -40°F to 425°F (-40°C to 218°C), up to 450°F intermittent, with a 10:1 design ratio.

- › Pure chlorobutyl tube compound
- › Crimped solution, proven safety and cost advantages over Campbell bolt-on style coupled assemblies
- › Exceeds 10:1 ARPM recommended safety factor

Tube: Chlorobutyl synthetic rubber

Cover: Red or black Pyrosyn®, pin-pricked

Reinforcement: Two-braid steel wire

Temperature: -40°F to 425°F (-40°C to 218°C), up to 450°F intermittent

Couplings: Campbell Female Ground Joint

Wing Nut, Female Ground Joint Low Profile Nut, Male NPT, Male NPT Swivel

Order Codes:

539-870-024 (black)

539-876-024 (red)



Coupled assemblies available.

SAP #		ID		Nom. OD		Max. WP		Weight	
Red	Black	in.	mm	in.	mm	psi	MPa	lb./ft.	kg/m
20645689	20637404	3/4	19.1	1.28	32.5	250	1.72	250	1.72

Hose design ratio (burst pressure) 10:1.



Hydrocarbon Drain

Atmospheric Distillation
 Vacuum Distillation
 Hydrocracker
 Hydrotreater
 Coker
 Alkylation
 Isomerization
 FCC Feed Hydrotreater
 Fluid Catalytic Cracker
 Catalytic Reformer



Hydrocarbon Drain Hose® - Braided

Application: This is a heavy-duty hose designed for hydrocarbon drain service. It is designed to clean out the hot residue created during steam cleaning and withstand harsh high heat and oil environments.

- › 10:1 safety factor, over twice the ARPM recommendation
- › Over-the-cover crimp solution with B2 fittings
- › Compatible with Campbell air hammer fittings to eliminate cross threading

Tube: Black nitrile

Cover: Blue chlorosulfonated polyethylene

Reinforcement: One-wire braid

Temperature: -40°F to 275°F (-40°C to 135°C)

Couplings: Continental B2 Male NPT,
Campbell Air Hammer Couplings

Order Codes:

547-819 (blue)

547-816 (green)



Coupled assemblies available.

SAP #	ID		OD		Max. WP		Weight		
	Blue	Green	in.	mm	in.	mm	psi	MPa	lb./ft.
20177678	20276495	3/4	19.1	1.10	27.94	300	0.43	0.14	0.21
20221522		1	25.4	1.42	36.07	300	0.69	0.20	0.30

Hose design ratio (burst pressure) 10:1.

Note: Not designed for steam service. Use Flexsteel® 250 Steam for steam service requirements.



Hydrocarbon Drain Hose® - Hand-Built

Application: This is a heavy-duty hose designed for use in hydrocarbon drain service.

- › Exceeds the ARPM recommendation safety factor
- › 350°F maximum temperature rating

Tube: Black nitrile

Cover: Blue Wingprene®

Reinforcement: Two spiral-ply steel wires

Temperature: -25°F to 350°F (-32°C to 177°C)

Couplings: Campbell Air Hammer Couplings

Order Code: 543-729

SAP #	ID		OD		Max. WP	Weight
	Blue	in.	mm	in.		
20264356		3/4	19.1	1.33	33.86	0.63
20467694		1	25.4	1.58	40.14	0.78
20326679		1½	38.1	2.25	57.2	1.57
20276441		2	50.8	2.77	70.36	2.01

Hose design ratio (burst pressure) 4:1.

Note: Not designed for steam service. Use Flexsteel® 250 Steam for steam service requirements.



Fabchem® (UHMWPE) Tube

Application: A significant improvement to our chemical hose line, Fabchem® handles the majority of common industrial chemicals in pressure, gravity flow and suction service.

- › Extremely versatile, handling 98% of all chemicals
 - › 212°F maximum temperature rating
 - › Crimp specs available with Insta-Lock™ cam & groove couplings
 - › Conductive version available: Fabchem®-C
- Order Code 546-498, full specifications in INH full-line catalog

Tube: Ultra-high molecular weight polyethylene (UHMWPE)

Cover: Green EPDM synthetic rubber with bright orange longitudinal stripe, corrugated (wrapped impression)

Reinforcement: Spiral-plyed synthetic fabric with double wire helix

Temperature: -40°F to 212°F (-40°C to 100°C)

Couplings: Continental Insta-Lock™, Campbell ChemJoint™

Order Codes:

546-065 (green)

546-533 (purple)

546-555 (blue)

546-716 (ARC - Abrasion-Resistant Cover)

SAP #				ID		Nom. OD		Max. WP		Bend Radius		Vacuum HG		Weight	
Green	Purple	Blue	ARC	in.	mm	in.	mm	psi	MPa	in.	mm	in.	mm	lb./ft.	kg/m
20018477		20617876		1/2	12.7	0.95	24.1	200	1.38	3	76	29	737	0.33	0.49
20018478		20617877		3/4	19.1	1.22	31.0	200	1.38	4	89	29	737	0.46	0.68
20018481	20673999	20243623		1	25.4	1.47	37.3	200	1.38	4	102	29	737	0.60	0.89
20018485				1¼	31.8	1.73	43.9	200	1.38	4	102	29	737	0.73	1.09
20018488	20674040	20385256		1½	38.1	1.97	50.0	200	1.38	5	127	29	737	0.84	1.25
20018493	20674041	20598926	20018718	2	50.8	2.55	64.8	200	1.38	6	152	29	737	1.22	1.82
20018496				2½	63.5	3.14	79.8	200	1.38	8	203	29	737	1.78	2.65
20018498			20018720	3	76.2	3.63	92.2	200	1.38	9	229	29	737	2.11	3.14
20018502			20018722	4	101.6	4.67	118.6	200	1.38	10	254	29	737	2.81	4.18

Hose design ratio (burst pressure) 4:1.



Chemical

Atmospheric Distillation
 Vacuum Distillation
 Hydrotreater
 Coker
 Alkylation
 Isomerization
 FCC Feed Hydrotreater
 Fluid Catalytic Cracker
 Catalytic Reformer
 Wastewater
 Utilities





Petroleum

Atmospheric Distillation
 Vacuum Distillation
 Hydrocracker
 Hydrotreater
 Coker
 Alkylation
 Isomerization
 FCC Feed Hydrotreater
 Fluid Catalytic Cracker
 Catalytic Reformer
 Wastewater
 Utilities
 Docking



ExtremeFlex™ Petroleum Transfer

Application: This hose is an extremely flexible and lightweight drop hose for use in tank truck and in-plant operation to transfer diesel, ethanol, gasoline, oil and petroleum-based products with up to 50% aromatic content. It has a corrugated construction for lower drag coefficient and superior abrasion resistance.

- › Double helix construction provides lightweight construction and extreme flexibility
- › Compatible with a variety of petroleum products, up to 50% aromatics
- › Colored cover abrasion wear indicator layer

Tube: Black nitrile synthetic rubber, ARPM Class A (High Oil Resistance)

Cover: Black Chemivic synthetic (corrugated)

Reinforcement: Spiral-plyed synthetic fabric with double wire helix

Temperature: -40°F to 200°F (-40°C to 93°C)

Couplings: Continental Insta-Lock™

Order Code:
543-216

SAP #	ID	Nom. OD		Max. WP		Bend Radius		Vacuum HG		Weight		
		in.	mm	in.	mm	psi	MPa	in.	mm	in.	mm	lb./ft.
20459042	3/4	19.1	1.20	30.5	250	1.72	.75	19	29	737	0.44	0.65
20459043	1	25.4	1.45	36.8	250	1.72	1	25	29	737	0.55	0.81
20459044	1½	38.1	1.91	48.5	250	1.72	1.5	38	29	737	0.73	1.08
20459045	2	50.8	2.43	61.8	250	1.72	2	51	29	737	0.96	1.43
20459046	2½	63.5	3.00	76.1	200	1.37	2.5	64	29	737	1.41	2.10
20459047	3	76.2	3.50	88.8	200	1.37	3	76	29	737	1.69	2.51
20459048	4	101.6	4.56	115.7	150	1.03	4	101	29	737	2.42	3.61
20546328	6	152.4	6.62	168.4	150	1.03	6	152	29	737	4.43	2.01

Hose design ratio (burst pressure) 4:1.



Flexdock® 225

Application: Flexdock® 225 is built with a corrugated cover to provide flexibility in petroleum transfer service. A variety of tube compounds are available to tailor the chemical and hydrocarbon resistance of the hose to the type of material handled.

- › Corrugated cover to provide flexibility in large bore petroleum transfer service
- › Variety of tube compounds are available to tailor the chemical and hydrocarbon resistance
- › Approved by major operators and the U.S. Coast Guard

Tube: Nitrile synthetic rubber for up to 50% aromatics. Also available with a Flosyn® tube for up to 100% aromatics

Cover: Black Wingprene® synthetic cover, corrugated, wrapped finish

Reinforcement: Spiral-ply heavy-duty synthetic fabric with double wire helix

Temperature: -25°F to 200°F (-32°C to 93°C)

Couplings: Standard built-in steel nipple

Order Codes:

541-532 (nitrile tube)

541-534 (Flosyn® tube)

Flexdock® 225 Nitrile

SAP #	ID		Nom. OD		Max. WP		Bend Radius		Vacuum HG		Weight	
	in.	mm	in.	mm	psi	MPa	in.	mm	in.	mm	lb./ft.	kg/m
	2	50.8	2.93	74.5	225	1.55	8.0	203	29	737	2.38	3.54
20346713	3	76.2	3.96	100.5	225	1.55	11.0	279	29	737	3.47	5.16
20655171	4	101.6	5.25	133.5	225	1.55	15.0	381	29	737	6.19	9.21
	5	127.0	6.31	160.4	225	1.55	20.0	508	29	737	7.77	11.57
20032061	6	152.4	7.32	185.8	225	1.55	22.0	559	29	737	9.37	13.95
20476794	8	203.4	9.41	238.9	225	1.55	30.0	762	29	737	13.64	20.30
20098252	10	254.0	11.61	295.0	225	1.55	40.0	1016	29	737	20.29	30.20
20704428	12	305.4	13.70	348.0	225	1.55	60.0	1524	29	737	24.87	37.01

Flexdock® 225 Flosyn®

SAP #	ID		Nom. OD		Max. WP		Bend Radius		Vacuum HG		Weight	
	in.	mm	in.	mm	psi	MPa	in.	mm	in.	mm	lb./ft.	kg/m
20424276	3	76.2	3.99	101.3	225	1.55	11.0	279	29	737	3.82	5.69
20054995	4	101.6	5.17	131.4	225	1.55	15.0	381	29	737	6.16	9.16
20054996	6	152.4	7.31	185.6	225	1.55	22.0	559	29	737	9.94	14.79
20129447	8	203.4	9.40	238.7	225	1.55	30.0	762	29	737	14.40	21.42
20139283	10	254.0	11.52	292.6	225	1.55	40.0	1016	29	737	20.46	30.44
20424277	12	305.4	13.72	348.5	225	1.55	60.0	1524	29	737	26.54	39.49

Hose design ratio (burst pressure) 4:1.

Note: Factory-coupled hose manufactured according to the code of Federal Regulations Standard 33 CFR 154.500 and 33 CFR 156.170.



Nitrogen

Atmospheric Distillation
 Vacuum Distillation
 Hydrocracker
 Hydrotreater
 Coker
 Alkylation
 Isomerization
 FCC Feed Hydrotreater
 Fluid Catalytic Cracker
 Catalytic Reformer
 Utilities



Nitrogen Service Hose

Application: Nitrogen Service Hose is for in-plant nitrogen service at petrochemical, refineries and general manufacturing.

- › Built specifically for nitrogen service in plant with a temp rating of -40°F to 210°F for excellent durability
- › Specifically formulated compounds to handle nitrogen air in the tube and ozone resistance in the cover for longer life
- › Crimped with Campbell's Boves/Thor fitting for the safest nitrogen assembly on the market (no cross contamination)

Tube: EPDM synthetic rubber

Cover: Yellow or blue EPDM synthetic rubber

Reinforcement: Four-spiral polyester

Temperature: -40°F to 210°F (-40°C to 99°C)

Couplings: Continental UC Male NPTF,
Campbell Boves/Thor

Order Codes:

569-516 (yellow)

569-562 (blue)

SAP #		ID		Nom. OD		Max. WP		Weight	
Yellow	Blue	in.	mm	in.	mm	psi	MPa	lb./ft.	kg/m
20026847	20315149	3/4	19.1	1.15	29.2	300	2.07	0.42	0.62

Hose design ratio (burst pressure) 4:1.





Gorilla®

Application: A premium-quality, multipurpose industrial hose with a wide range of applications in factories, construction, agriculture, quarries, mines, railroads, the oil and gas industry and shipbuilding. All sizes are crush-resistant and rated at 500 psi (3.4 MPa) maximum working pressure. The premium Carbryn™ cover offers the most superior abrasion resistance of air and multipurpose hose. Non-conductive, minimum electrical resistance greater than 1 megohm per inch of hose length at 1000 Volts DC.

- › Carbryn™ cover for superior abrasion resistance
- › Highest oil resistance in both tube and cover for long life span
- › Crush-resistant with aramid reinforcement for durability

Tube: Nitrile synthetic rubber, ARPM Class A (High Oil Resistance)

Cover: Yellow Carbryn™ synthetic rubber, ARPM Class A (High Oil Resistance), MSHA approved

Reinforcement: Spiral aramid yarn, 2" is braided synthetic yarn

Temperature: -20°F to 210°F (-29°C to 99°C)

Couplings: Continental UC Male NPTF

Order Codes:

569-035

536-446 (2")

SAP #	ID		Nom. OD		Max. WP		Weight	
	in.	mm	in.	mm	psi	MPa	lb./ft.	kg/m
20026239	1/4	6.4	0.61	15.5	500	3.45	0.17	0.25
20026256	3/8	9.5	0.73	18.6	500	3.45	0.22	0.33
20026273	1/2	12.7	0.89	22.6	500	3.45	0.28	0.42
20026289	5/8	15.9	1.06	26.9	500	3.45	0.35	0.52
20026290	3/4	19.1	1.19	30.2	500	3.45	0.41	0.61
20026304	1	25.4	1.50	37.8	500	3.45	0.58	0.86
20026306	1¼	31.8	1.77	45.6	500	3.45	0.79	1.18
20026309	1½	38.1	2.04	51.8	500	3.45	0.86	1.27
20023183	2	50.8	2.62	66.6	500	3.45	1.22	1.82

Hose design ratio (burst pressure) 4:1.



Air & Water

Atmospheric Distillation

Vacuum Distillation

Hydrocracker

Hydrotreater (*air only*)

Coker

Alkylation

Isomerization

FCC Feed Hydrotreater

Fluid Catalytic Cracker

Catalytic Reformer

Tank Farm

Wastewater

Utilities



Air & Water

Atmospheric Distillation
 Vacuum Distillation
 Hydrocracker
 Hydrotreater
 Coker
 Alkylation
 Isomerization
 FCC Feed Hydrotreater
 Fluid Catalytic Cracker
 Catalytic Reformer
 Tank Farm
 Wastewater
 Utilities



Frontier™

Application: An economical air and water hose, Frontier™ is for a wide range of industrial, construction and agricultural applications. Available in 200, 250 and 300 psi working pressures.

- › Good ozone resistance for longer life
- › Economical hose that can withstand the job and last longer than competitors
- › Available in black, red, yellow, green and blue for full-line dedication and no cross contamination

Tube: EPDM synthetic rubber, ARPM Class C (Limited Oil Resistance)

Cover: Black, red, yellow, green or blue EPDM synthetic rubber Class C (Limited Oil Resistance)

Reinforcement: Spiral synthetic yarn, 2" is braided

Temperature: -40°F to 210°F (-40°C to 99°C)

Couplings: Continental UC Male NPTF

Order Codes: See charts

Frontier™ 200

Order Codes: 536-035 (2" black), 536-040 (2" red), 569-009 (black), 569-011 (red), 569-038 (yellow), 569-547 (blue)

SAP #				ID		Nom. OD		Max. WP		Weight	
Black	Red	Blue	Yellow	in.	mm	in.	mm	psi	MPa	lb./ft.	kg/m
20025544	20025733		20709043	3/16	4.8	0.44	11.2	200	1.38	0.08	0.12
20025553	20025735	20026919	20654587	1/4	6.4	0.50	12.7	200	1.38	0.09	0.13
20025565	20025748	20026920		5/16	7.9	0.58	14.7	200	1.38	0.12	0.18
20025572	20025750	20338093	20026337	3/8	9.5	0.67	17.0	200	1.38	0.15	0.22
20025591	20025773	20026921	20026353	1/2	12.7	0.81	20.6	200	1.38	0.20	0.30
20025610	20025787	20026923		5/8	15.9	0.97	24.6	200	1.38	0.27	0.40
20025619	20025799	20026925	20026358	3/4	19.1	1.12	28.5	200	1.38	0.34	0.51
20025714	20025966	20026928	20026361	1	25.4	1.44	36.8	200	1.38	0.54	0.80
20025649	20025826	20736320	20026364	1¼	31.8	1.73	44.0	200	1.38	0.75	1.12
20025655	20025834	20340494	20026366	1½	38.1	1.98	50.3	200	1.38	0.86	1.28
20022897	20022939			2	50.8	2.50	63.5	200	1.38	1.16	1.73

Hose design ratio (burst pressure) 4:1.

Frontier™ 250

Order Codes: 569-010 (black), 569-012 (red), 569-039 (yellow), 569-506 (green), 569-548 (blue)

SAP #					ID		Nom. OD		Max. WP		Weight	
Black	Red	Yellow	Green	Blue	in.	mm	in.	mm	psi	MPa	lb./ft.	kg/m
20025667	20025844	20026368	20742873	20742876	1/4	6.4	0.53	13.5	250	1.72	0.11	0.16
20025670	20025865				5/16	7.9	0.59	15.0	250	1.72	0.13	0.19
20025674	20025869	20026374	20742874	20617089	3/8	9.5	0.70	17.8	250	1.72	0.17	0.25
20025685	20025899	20026375	20026807	20617190	1/2	12.7	0.84	21.3	250	1.72	0.22	0.33
20025695	20025922	20026376			5/8	15.9	0.98	24.9	250	1.72	0.27	0.40
20025701	20025932	20026379	20026809	20026929	3/4	19.1	1.14	29.0	250	1.72	0.35	0.52

Hose design ratio (burst pressure) 4:1.

Frontier™ 300

Order Codes: 569-516 (yellow), 569-557 (red), 569-560 (green), 569-559 (black), 569-562 (blue)

SAP #				ID		Nom. OD		Max. WP		Weight	
Red	Yellow	Green	Black	in.	mm	in.	mm	psi	MPa	lb./ft.	kg/m
20026960			20026997	1/4	6.4	0.53	13.5	300	2.07	0.10	0.15
20026971	20127382	20761181	20027001	3/8	9.5	0.70	17.8	300	2.07	0.17	0.25
20026980	20127385	20761182	20027003	1/2	12.7	0.84	21.3	300	2.07	0.22	0.33
20026985	20026845	20048519	20183079	3/4	19.1	1.15	29.2	300	2.07	0.37	0.55
20026992	20026859	20048546	20027011	1	25.4	1.48	37.3	300	2.07	0.58	0.86

Hose design ratio (burst pressure) 4:1.

Hose Maintenance and Inspection Guide

Routine maintenance and inspection of hose saves money by reducing the chance of costly repairs and downtime, while increasing the potential for longer hose life. It also ensures a safe work environment and reduces the chance of hazardous spills.

Hose 101 - The Basics

- › Always use the proper hose and coupling selection → “STAMPED”
- › Always follow manufacturer assembly instructions
- › Always follow ARPM maintenance and storage guidelines
- › Make sure the hose is properly grounded, if applicable

DAILY INSPECTION CHECKLIST

- Hose cover damage
- Stiffness or hardening (i.e., cracking)
- Changes in hose color
- Cover blisters or bubbles
- Kinked, crushed or flattened hose
- Leakage
- Exposed or damaged hose reinforcement
- Movement of the hose from fittings

PERIODIC INSPECTION CHECKLIST

- Inspect hose tube for hardness, color change, cracks, blisters and erosion
- Visually inspect for leakage
 - Note: Never inspect a hose for leaks by running your hands over it while it is under pressure
- Hydrostatic Pressure Testing
 - a. Always use WATER for pressure testing
 - b. Test at regular intervals
 - c. Essential for hose in hazardous applications
- Check the hose for electrical continuity if applicable

Continental offers customized hose maintenance training classes.

Please refer to INH Training Module 23 for additional Hose Maintenance, Safety and Troubleshooting tips.

STAR Distributor

Every Continental STAR Distributor takes industrial hose to the next level with the facilities, equipment, training and knowledge that set new hose assembly standards. They also adhere to all NAHAD and ARPM standards. Additionally, all STAR distributors are independently audited by Underwriters Laboratories.





A Quantum Leap in Crimping.

Continental 

The new crimper controller from Continental is a huge leap forward. No more hunting through manuals to find the right specs. To crimp a fitting onto a hose, simply use our touchscreen interface. Save presets, access tech support and back up your data to the cloud with the touch of a button.

The Future of Crimping Is Here.

Visit CrimpCloud.com to learn more.

CrimplQ™ Controller

Continental's CrimplQ™ Controller is powered by Continental Fluid Solutions technology, which provides direct access to all crimping features and information. It supports a user-friendly interface to guide new and advanced users through the crimping process quickly and easily.

- WiFi-enabled for support, updates, reporting and cloud connectivity



ContiTech

Industrial Fluid Solutions

Market segment
Industrial Hose

Contact
ContiTech
703 S. Cleveland Massillon Road
Fairlawn, OH 44333-3023 U.S.A.
1-800-235-4632
www.contitech.us

Your local contact
www.contitech.de/contactlocator

Canada
1-888-275-4397

Mexico
1-800-439-7373

ContiTech. Smart Solutions Beyond Rubber

The ContiTech division of the Continental Corporation is one of the world's leading industry specialists. As a technology partner, our name is synonymous with expertise in development and materials for components made of natural rubber and plastics and also in combination with other materials such as metal, fabrics or silicone. By integrating electronic components, we are also generating solutions for the future.

Beyond products, systems and services, we also provide holistic solutions and have a formative influence on the industrial infrastructure. We see digitalization and current trends as an opportunity to work with our customers to add sustainable value - for both sides and for good.