

Hydraulic Couplings: E-Series

Interchange Data

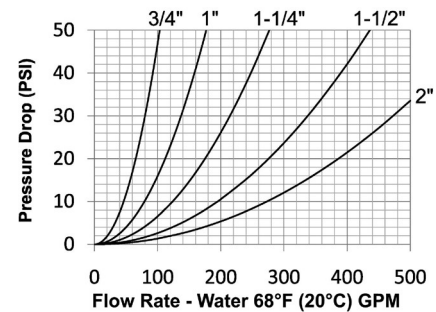
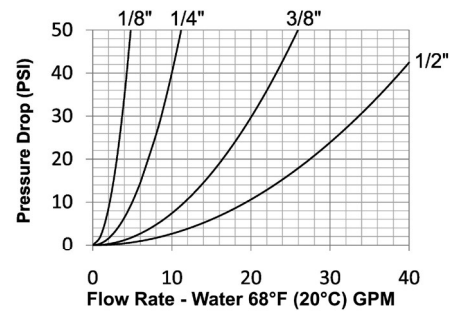
- Straight-through pressure-wash interchange
- Parker ST-Series, Foster FST-Series, Hansen ST-Series

Seal Components

- Nitrile (Buna-N) seals are standard, providing a temperature range of -40°F to 250°F (-40°C to 121°C)

Materials

- Machined components are manufactured using solid steel, brass, or 303 stainless steel bar stock
- Stainless steel balls, retaining rings, and springs maximize corrosion resistance and extend service life
- Steel componentry is plated using ROHS-compliant trivalent chrome
- 1-1/4" to 2" brass couplers have steel sleeves as standard to maximize service life, hardened to resist deformation
- Steel plugs are hardened to provide heavy-duty performance



Rated Pressure Chart

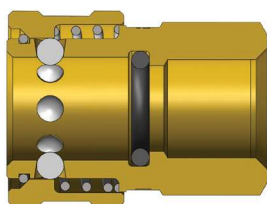
| Body Size | E-Series Straight-Through Interchange (Connected) | | | | | | | | | | | |
|-----------|---|-----|--------|-------|--------------------|-----|--------|-------|----------------------------------|-----|--------|-------|
| | Brass Coupler/Steel Plug | | | | Brass Coupler/Plug | | | | 303 Stainless Steel Coupler/Plug | | | |
| | Max. Working | | Burst | | Max. Working | | Burst | | Max. Working | | Burst | |
| | PSI | Bar | PSI | Bar | PSI | Bar | PSI | Bar | PSI | Bar | PSI | Bar |
| 1/8" | 2,600 | 179 | 10,400 | 717 | 2,500 | 172 | 10,000 | 689 | 4,200 | 290 | 16,800 | 1,158 |
| 1/4" | 5,500 | 379 | 22,000 | 1,517 | 5,200 | 359 | 20,800 | 1,434 | 6,700 | 462 | 26,800 | 1,848 |
| 3/8" | 3,500 | 241 | 14,000 | 966 | 2,700 | 186 | 10,800 | 745 | 5,500 | 379 | 22,000 | 1,517 |
| 1/2" | 2,700 | 186 | 10,800 | 745 | 2,200 | 152 | 8,800 | 607 | 3,000 | 207 | 12,000 | 827 |
| 3/4" | 2,700 | 186 | 10,800 | 745 | 1,700 | 117 | 6,800 | 469 | 3,000 | 207 | 12,000 | 827 |
| 1" | 2,000 | 138 | 8,000 | 552 | 1,200 | 83 | 4,800 | 331 | 1,700 | 117 | 6,800 | 469 |
| 1-1/4" | 2,000 | 138 | 8,000 | 552 | 1,700 | 117 | 6,800 | 469 | 2,000 | 138 | 8,000 | 552 |
| 1-1/2" | 2,000 | 138 | 8,000 | 552 | 1,400 | 97 | 5,600 | 386 | 2,000 | 138 | 8,000 | 552 |
| 2" | 2,000 | 138 | 8,000 | 552 | 1,400 | 97 | 5,600 | 386 | 2,000 | 138 | 8,000 | 552 |

Technical Specifications

| Body Size | Interchange Standards | | | | Functional Parameters | | | | |
|-----------|-----------------------|-----------------|-------------------------|---------------------|-----------------------|---------------|------------|----------------|------------------|
| | U.S. Military | U.S. Government | International Standards | ANSI/NFPA Standards | Locking Ball Quantity | Air Inclusion | Fluid Loss | Vacuum inch HG | Flow ΔP = 15 PSI |
| 1/8" | - | - | - | - | 6 | N/A | N/A | N/R | 3 GPM |
| 1/4" | - | - | - | - | 6 | N/A | N/A | N/R | 6 GPM |
| 3/8" | - | - | - | - | 8 | N/A | N/A | N/R | 14 GPM |
| 1/2" | - | - | - | - | 8 | N/A | N/A | N/R | 24 GPM |
| 3/4" | - | - | - | - | 8 | N/A | N/A | N/R | 58 GPM |
| 1" | - | - | - | - | 8 | N/A | N/A | N/R | 100 GPM |
| 1-1/4" | - | - | - | - | 8 | N/A | N/A | N/R | 150 GPM |
| 1-1/2" | - | - | - | - | 8 | N/A | N/A | N/R | 250 GPM |
| 2" | - | - | - | - | 8 | N/A | N/A | N/R | 350 GPM |

Available Options

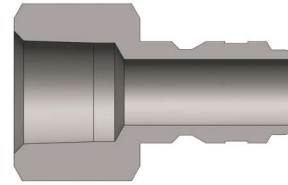
| Body Size | Standard Seal Options | | | | Kalrez® Seal Options | | | Other Options | |
|-----------|-----------------------|------|-------------|----------|----------------------|------|------|---------------|-----------|
| | FKM | EPDM | Mil-Nitrile | Silicone | 4079 | 6375 | 7075 | Sleeve-Lock | Oxy-Clean |
| 1/8" | F- | P- | M- | S- | N/A | N/A | N/A | -LS | -C1 |
| 1/4" | F- | P- | M- | S- | N/A | N/A | N/A | -LS | -C1 |
| 3/8" | F- | P- | M- | S- | N/A | N/A | N/A | -LS | -C1 |
| 1/2" | F- | P- | M- | S- | N/A | N/A | N/A | -LS | -C1 |
| 3/4" | F- | P- | M- | S- | N/A | N/A | N/A | -LS | -C1 |
| 1" | F- | P- | M- | S- | N/A | N/A | N/A | -LS | -C1 |
| 1-1/4" | F- | P- | M- | S- | N/A | N/A | N/A | -LS | -C1 |
| 1-1/2" | F- | P- | M- | S- | N/A | N/A | N/A | -LS | -C1 |
| 2" | F- | P- | M- | S- | N/A | N/A | N/A | -LS | -C1 |



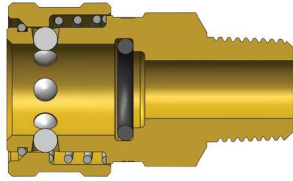
E-Series Straight-Through Interchange Coupler (Female Threads)

| Body Size | E-Series Straight-Through Interchange Coupler (Female Threads) | | | | | | | |
|-----------|--|----------------------|---------------|--------|------|------------|-------|----------|
| | Part Detail | | | Length | | Maximum OD | | Hex inch |
| | Part # | Threads | Material | inch | mm | inch | mm | |
| 1/8" | 1EF1-B | 1/8" - 27 NPTF | brass | 1.01 | 25.7 | 0.65 | 16.5 | 9-16" |
| | 1EF1-S | 1/8" - 27 NPTF | 303 stainless | 1.01 | 25.7 | 0.65 | 16.5 | 9/16" |
| 1/4" | 2EF2-B | 1/4" - 18 NPTF | brass | 1.40 | 35.6 | 0.96 | 24.4 | 13/16" |
| | 2EF2-S | 1/4" - 18 NPTF | 303 stainless | 1.40 | 35.6 | 0.96 | 24.4 | 13/16" |
| | 2EBF2-B | 1/4" - 19 BSPP | brass | 1.40 | 35.6 | 0.96 | 24.4 | 13/16" |
| 3/8" | 3EF3-B | 3/8" - 18 NPTF | brass | 1.60 | 40.6 | 1.13 | 28.7 | 1" |
| | 3EF3-S | 3/8" - 18 NPTF | 303 stainless | 1.60 | 40.6 | 1.13 | 28.7 | 1" |
| | 3EBF3-B | 3/8" - 19 BSPP | brass | 1.60 | 40.6 | 1.13 | 28.7 | 1" |
| 1/2" | 4EF4-B | 1/2" - 14 NPTF | brass | 1.96 | 49.8 | 1.27 | 32.3 | 1-1/8" |
| | 4EF4-S | 1/2" - 14 NPTF | 303 stainless | 1.96 | 49.8 | 1.27 | 32.3 | 1-1/8" |
| | 4EBF4-B | 1/2" - 14 BSPP | brass | 1.96 | 49.8 | 1.27 | 32.3 | 1-1/8" |
| 3/4" | 6EF6-B | 3/4" - 14 NPTF | brass | 2.10 | 53.3 | 1.65 | 41.9 | 1-1/2" |
| | 6EF6-S | 3/4" - 14 NPTF | 303 stainless | 2.10 | 53.3 | 1.65 | 41.9 | 1-1/2" |
| | 6EBF6-B | 3/4" - 14 BSPP | brass | 2.10 | 53.3 | 1.65 | 41.9 | 1-1/2" |
| 1" | 8EF8-B | 1" - 11-1/2 NPTF | brass | 2.36 | 59.9 | 2.02 | 51.3 | 1-3/4" |
| | 8EF8-S | 1" - 11-1/2 NPTF | 303 stainless | 2.36 | 59.9 | 2.02 | 51.3 | 1-3/4" |
| | 8EBF8-B | 1" - 11 BSPP | brass | 2.36 | 59.9 | 2.02 | 51.3 | 1-3/4" |
| 1-1/4" | 10EF10-B | 1-1/4" - 11-1/2 NPTF | brass | 2.36 | 59.9 | 2.59 | 65.8 | 2-1/4" |
| | 10EF10-S | 1-1/4" - 11-1/2 NPTF | 303 stainless | 2.36 | 59.9 | 2.59 | 65.8 | 2-1/4" |
| 1-1/2" | 12EF12-B | 1-1/2" - 11-1/2 NPTF | brass | 2.89 | 73.4 | 3.18 | 80.8 | 2-3/4" |
| | 12EF12-S | 1-1/2" - 11-1/2 NPTF | 303 stainless | 2.89 | 73.4 | 3.18 | 80.8 | 2-3/4" |
| 2" | 16EF16-B | 2" - 11-1/2 NPTF | brass | 3.00 | 76.2 | 4.04 | 102.6 | 3-1/2" |
| | 16EF16-S | 2" - 11-1/2 NPTF | 303 stainless | 3.00 | 76.2 | 4.04 | 102.6 | 3-1/2" |

Hydraulic Couplings: E-Series

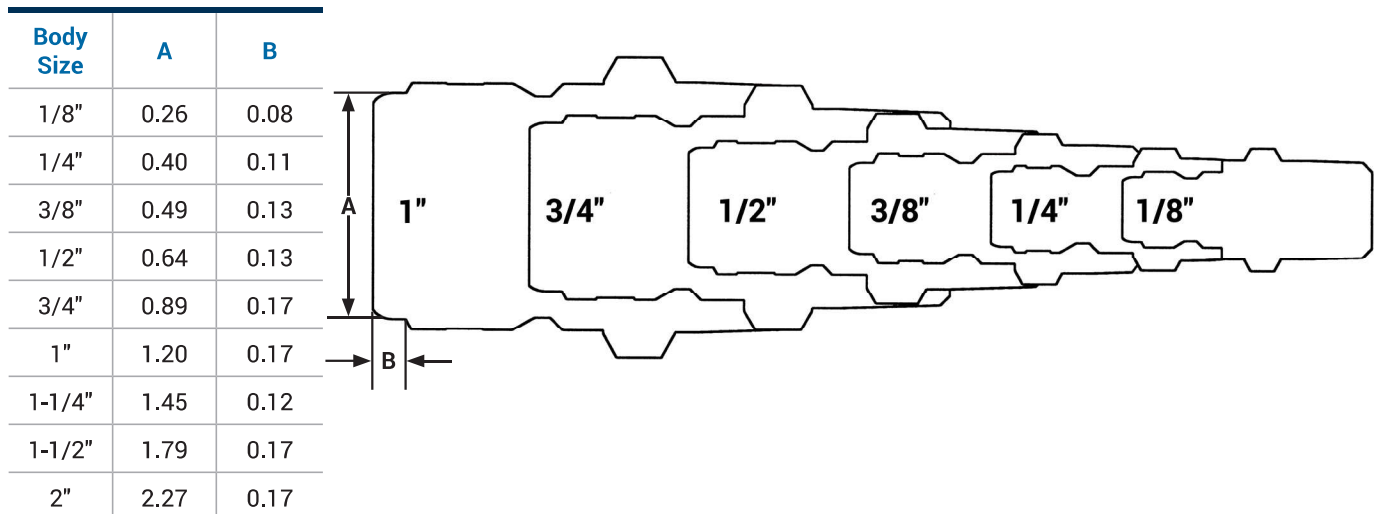


| Body Size | E-Series Straight-Through Interchange Plug (Female Threads) | | | | | | | |
|-----------|---|----------------------|---------------|--------|------|------------|------|----------|
| | Part Detail | | | Length | | Maximum OD | | Hex inch |
| | Part # | Threads | Material | inch | mm | inch | mm | |
| 1/8" | E1F1 | 1/8" - 27 NPTF | steel | 0.98 | 24.9 | 0.65 | 16.5 | 9/16" |
| | E1F1-B | 1/8" - 27 NPTF | brass | 0.98 | 24.9 | 0.65 | 16.5 | 9/16" |
| | E1F1-S | 1/8" - 27 NPTF | 303 stainless | 0.98 | 24.9 | 0.65 | 16.5 | 9/16" |
| 1/4" | E2F2 | 1/4" - 18 NPTF | steel | 1.47 | 37.3 | 0.79 | 20.1 | 11/16" |
| | E2F2-B | 1/4" - 18 NPTF | brass | 1.47 | 37.3 | 0.79 | 20.1 | 11/16" |
| | E2F2-S | 1/4" - 18 NPTF | 303 stainless | 1.47 | 37.3 | 0.79 | 20.1 | 11/16" |
| | E2BF2-B | 1/4" - 19 BSPP | brass | 1.47 | 37.3 | 0.79 | 20.1 | 11/16" |
| 3/8" | E3F3 | 3/8" - 18 NPTF | steel | 1.60 | 40.6 | 1.01 | 25.7 | 7/8" |
| | E3F3-B | 3/8" - 18 NPTF | brass | 1.60 | 40.6 | 1.01 | 25.7 | 7/8" |
| | E3F3-S | 3/8" - 18 NPTF | 303 stainless | 1.60 | 40.6 | 1.01 | 25.7 | 7/8" |
| | E3BF3-B | 3/8" - 19 BSPP | brass | 1.60 | 40.6 | 1.01 | 25.7 | 7/8" |
| 1/2" | E4F4 | 1/2" - 14 NPTF | steel | 1.82 | 46.2 | 1.16 | 29.5 | 1" |
| | E4F4-B | 1/2" - 14 NPTF | brass | 1.82 | 46.2 | 1.16 | 29.5 | 1" |
| | E4F4-S | 1/2" - 14 NPTF | 303 stainless | 1.82 | 46.2 | 1.16 | 29.5 | 1" |
| | E4BF4-B | 1/2" - 14 BSPP | brass | 1.82 | 46.2 | 1.16 | 29.5 | 1" |
| 3/4" | E6F6 | 3/4" - 14 NPTF | steel | 2.05 | 52.1 | 1.37 | 34.8 | 1-3/16" |
| | E6F6-B | 3/4" - 14 NPTF | brass | 2.05 | 52.1 | 1.37 | 34.8 | 1-3/16" |
| | E6F6-S | 3/4" - 14 NPTF | 303 stainless | 2.05 | 52.1 | 1.37 | 34.8 | 1-3/16" |
| | E6BF6-B | 3/4" - 14 BSPP | brass | 2.05 | 52.1 | 1.37 | 34.8 | 1-3/16" |
| 1" | E8F8 | 1" - 11-1/2 NPTF | steel | 2.36 | 59.9 | 1.73 | 43.9 | 1-1/2" |
| | E8F8-B | 1" - 11-1/2 NPTF | brass | 2.36 | 59.9 | 1.73 | 43.9 | 1-1/2" |
| | E8F8-S | 1" - 11-1/2 NPTF | 303 stainless | 2.36 | 59.9 | 1.73 | 43.9 | 1-1/2" |
| | E8BF8-B | 1" - 11 BSPP | brass | 2.36 | 59.9 | 1.73 | 43.9 | 1-1/2" |
| 1-1/4" | E10F10 | 1-1/4" - 11-1/2 NPTF | steel | 2.47 | 62.7 | 2.31 | 58.7 | 2" |
| | E10F10-B | 1-1/4" - 11-1/2 NPTF | brass | 2.47 | 62.7 | 2.31 | 58.7 | 2" |
| | E10F10-S | 1-1/4" - 11-1/2 NPTF | 303 stainless | 2.47 | 62.7 | 2.31 | 58.7 | 2" |
| 1-1/2" | E12F12 | 1-1/2" - 11-1/2 NPTF | steel | 2.74 | 69.6 | 2.60 | 66.0 | 2-1/4" |
| | E12F12-B | 1-1/2" - 11-1/2 NPTF | brass | 2.74 | 69.6 | 2.60 | 66.0 | 2-1/4" |
| | E12F12-S | 1-1/2" - 11-1/2 NPTF | 303 stainless | 2.74 | 69.6 | 2.60 | 66.0 | 2-1/4" |
| 2" | E16F16 | 2" - 11-1/2 NPTF | steel | 3.00 | 76.2 | 3.03 | 77.0 | 2-5/8" |
| | E16F16-B | 2" - 11-1/2 NPTF | brass | 3.00 | 76.2 | 3.03 | 77.0 | 2-5/8" |
| | E16F16-S | 2" - 11-1/2 NPTF | 303 stainless | 3.00 | 76.2 | 3.03 | 77.0 | 2-5/8" |

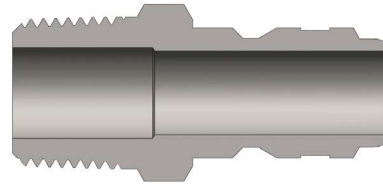
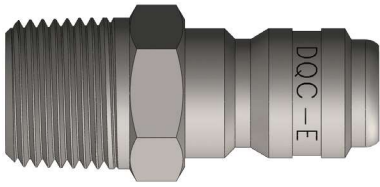


| Body Size | E-Series Straight-Through Interchange Coupler (Male Threads) | | | | | | | |
|-----------|--|----------------------|---------------|--------|------|------------|-------|----------|
| | Part Detail | | | Length | | Maximum OD | | Hex inch |
| | Part # | Threads | Material | inch | mm | inch | mm | |
| 1/8" | 1EM1-B | 1/8" - 27 NPTF | brass | 1.01 | 25.7 | 0.65 | 16.5 | 9/16" |
| | 1EM1-S | 1/8" - 27 NPTF | 303 stainless | 1.01 | 25.7 | 0.65 | 16.5 | 9/16" |
| 1/4" | 2EM2-B | 1/4" - 18 NPTF | brass | 1.66 | 42.2 | 0.96 | 24.4 | 13/16" |
| | 2EM2-S | 1/4" - 18 NPTF | 303 stainless | 1.66 | 42.2 | 0.96 | 24.4 | 13/16" |
| 3/8" | 3EM3-B | 3/8" - 18 NPTF | brass | 1.70 | 43.2 | 1.13 | 28.7 | 1" |
| | 3EM3-S | 3/8" - 18 NPTF | 303 stainless | 1.70 | 43.2 | 1.13 | 28.7 | 1" |
| 1/2" | 4EM4-B | 1/2" - 14 NPTF | brass | 2.00 | 50.8 | 1.27 | 32.3 | 1-1/8" |
| | 4EM4-S | 1/2" - 14 NPTF | 303 stainless | 2.00 | 50.8 | 1.27 | 32.3 | 1-1/8" |
| 3/4" | 6EM6-B | 3/4" - 14 NPTF | brass | 2.24 | 56.9 | 1.65 | 41.9 | 1-1/2" |
| | 6EM6-S | 3/4" - 14 NPTF | 303 stainless | 2.24 | 56.9 | 1.65 | 41.9 | 1-1/2" |
| 1" | 8EM8-B | 1" - 11-1/2 NPTF | brass | 2.61 | 66.3 | 2.02 | 51.3 | 1-3/4" |
| | 8EM8-S | 1" - 11-1/2 NPTF | 303 stainless | 2.61 | 66.3 | 2.02 | 51.3 | 1-3/4" |
| 1-1/4" | 10EM10-B | 1-1/4" - 11-1/2 NPTF | brass | 2.91 | 73.9 | 2.59 | 65.8 | 2-1/4" |
| 1-1/2" | 12EM12-B | 1-1/2" - 11-1/2 NPTF | brass | 3.44 | 87.4 | 3.18 | 80.8 | 2-3/4" |
| 2" | 16EM16-B | 2" - 11-1/2 NPTF | brass | 3.70 | 94.0 | 4.04 | 102.6 | 3-1/2" |

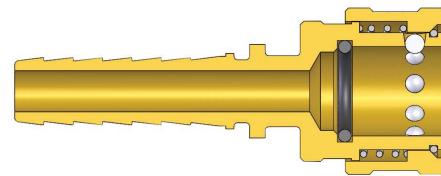
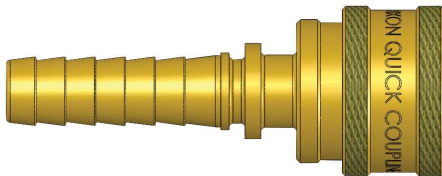
E-Series Profiles



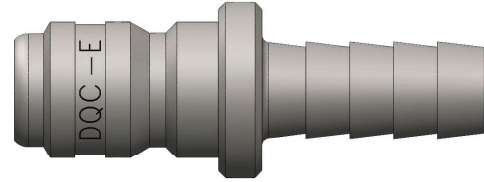
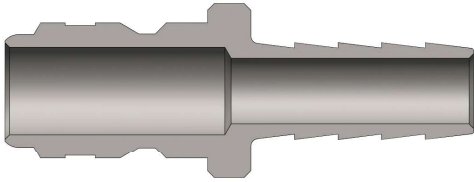
Hydraulic Couplings: E-Series



| Body Size | E-Series Straight-Through Interchange Plug (Male Threads) | | | | | | | |
|-----------|---|----------------------|---------------|--------|------|------------|------|----------|
| | Part Detail | | | Length | | Maximum OD | | Hex inch |
| | Part # | Threads | Material | inch | mm | inch | mm | |
| 1/8" | E1M1 | 1/8" - 27 NPTF | steel | 1.15 | 29.2 | 0.58 | 14.7 | 1/2" |
| | E1M1-B | 1/8" - 27 NPTF | brass | 1.15 | 29.2 | 0.58 | 14.7 | 1/2" |
| | E1M1-S | 1/8" - 27 NPTF | 303 stainless | 1.15 | 29.2 | 0.58 | 14.7 | 1/2" |
| 1/4" | E2M2 | 1/4" - 18 NPTF | steel | 1.50 | 38.1 | 0.65 | 16.5 | 9/16" |
| | E2M2-B | 1/4" - 18 NPTF | brass | 1.50 | 38.1 | 0.65 | 16.5 | 9/16" |
| | E2M2-S | 1/4" - 18 NPTF | 303 stainless | 1.50 | 38.1 | 0.65 | 16.5 | 9/16" |
| 3/8" | E3M3 | 3/8" - 18 NPTF | steel | 1.69 | 42.9 | 0.79 | 20.1 | 11/16" |
| | E3M3-B | 3/8" - 18 NPTF | brass | 1.69 | 42.9 | 0.79 | 20.1 | 11/16" |
| | E3M3-S | 3/8" - 18 NPTF | 303 stainless | 1.69 | 42.9 | 0.79 | 20.1 | 11/16" |
| 1/2" | E4M4 | 1/2" - 14 NPTF | steel | 1.91 | 48.5 | 1.01 | 25.7 | 7/8" |
| | E4M4-B | 1/2" - 14 NPTF | brass | 1.91 | 48.5 | 1.01 | 25.7 | 7/8" |
| | E4M4-S | 1/2" - 14 NPTF | 303 stainless | 1.91 | 48.5 | 1.01 | 25.7 | 7/8" |
| 3/4" | E6M6 | 3/4" - 14 NPTF | steel | 2.25 | 57.2 | 1.23 | 31.2 | 1-1/16" |
| | E6M6-B | 3/4" - 14 NPTF | brass | 2.25 | 57.2 | 1.23 | 31.2 | 1-1/16" |
| | E6M6-S | 3/4" - 14 NPTF | 303 stainless | 2.25 | 57.2 | 1.23 | 31.2 | 1-1/16" |
| 1" | E8M8 | 1" - 11-1/2 NPTF | steel | 2.45 | 62.2 | 1.59 | 40.4 | 1-3/8" |
| | E8M8-B | 1" - 11-1/2 NPTF | brass | 2.45 | 62.2 | 1.59 | 40.4 | 1-3/8" |
| | E8M8-S | 1" - 11-1/2 NPTF | 303 stainless | 2.45 | 62.2 | 1.59 | 40.4 | 1-3/8" |
| 1-1/4" | E10M10 | 1-1/4" - 11-1/2 NPTF | steel | 2.80 | 71.1 | 2.02 | 51.3 | 1-3/4" |
| | E10M10-B | 1-1/4" - 11-1/2 NPTF | brass | 2.80 | 71.1 | 2.02 | 51.3 | 1-3/4" |
| 1-1/2" | E12M12 | 1-1/2" - 11-1/2 NPTF | steel | 3.38 | 85.9 | 2.60 | 66.0 | 2-1/4" |
| | E12M12-B | 1-1/2" - 11-1/2 NPTF | brass | 3.38 | 85.9 | 2.60 | 66.0 | 2-1/4" |
| 2" | E16M16 | 2" - 11-1/2 NPTF | steel | 3.58 | 90.9 | 3.03 | 77.0 | 2-5/8" |
| | E16M16-B | 2" - 11-1/2 NPTF | brass | 3.58 | 90.9 | 3.03 | 77.0 | 2-5/8" |



| Body Size | E-Series Straight-Through Interchange Coupler (Hose Barb) | | | | | | | |
|-----------|---|---------|----------|--------|-------|------------|------|----------|
| | Part Detail | | | Length | | Maximum OD | | Hex inch |
| | Part # | Hose ID | Material | inch | mm | inch | mm | |
| 1/4" | 2ES2-B | 1/4" | brass | 2.06 | 52.2 | 1.00 | 25.4 | - |
| 3/8" | 3ES3-B | 3/8" | brass | 2.03 | 51.6 | 1.13 | 28.6 | - |
| 1/2" | 4ES4-B | 1/2" | brass | 3.45 | 87.6 | 1.34 | 34.0 | - |
| 3/4" | 6ES6-B | 3/4" | brass | 3.64 | 92.3 | 1.64 | 41.7 | - |
| 1" | 8ES8-B | 1" | brass | 4.58 | 116.2 | 1.99 | 50.5 | - |



| Body Size | E-Series Straight-Through Interchange Plug (Hose Barb) | | | | | | | |
|-----------|--|---------|----------|--------|------|------------|------|----------|
| | Part Detail | | | Length | | Maximum OD | | Hex inch |
| | Part # | Hose ID | Material | inch | mm | inch | mm | |
| 1/4" | E2S2 | 1/4" | steel | 1.90 | 48.3 | 0.56 | 14.2 | - |
| | E2S2-B | 1/4" | brass | 1.90 | 48.3 | 0.56 | 14.2 | - |
| 3/8" | E3S3 | 3/8" | steel | 2.03 | 51.6 | 0.63 | 16.0 | - |
| | E3S3-B | 3/8" | brass | 2.03 | 51.6 | 0.63 | 16.0 | - |
| 1/2" | E4S4 | 1/2" | steel | 2.09 | 53.1 | 0.75 | 19.1 | - |
| | E4S4-B | 1/2" | brass | 2.09 | 53.1 | 0.75 | 19.1 | - |
| 3/4" | E6S6 | 3/4" | steel | 2.28 | 57.9 | 1.13 | 28.7 | - |
| | E6S6-B | 3/4" | brass | 2.28 | 57.9 | 1.13 | 28.7 | - |
| 1" | E8S8 | 1" | steel | 3.28 | 83.3 | 1.38 | 35.1 | - |
| | E8S8-B | 1" | brass | 3.28 | 83.3 | 1.38 | 35.1 | - |

| Body Size | E-Series Straight-Through Interchange Coupler Seal Kits | | | |
|-----------|---|---------------|---------------|-------------------|
| | Part Detail | | | Seal Kit Contents |
| | Part # | Coupler Style | Seal Material | |
| 1/4" | 2E-SKIT | all | Nitrile | body O-ring |
| | F-2E-SKIT | all | FKM | body O-ring |
| | P-2E-SKIT | all | EPDM | body O-ring |
| 3/8" | 3E-SKIT | all | Nitrile | body O-ring |
| | F-3E-SKIT | all | FKM | body O-ring |
| | P-3E-SKIT | all | EPDM | body O-ring |
| 1/2" | 4E-SKIT | all | Nitrile | body O-ring |
| | F-4E-SKIT | all | FKM | body O-ring |
| | P-4E-SKIT | all | EPDM | body O-ring |
| 3/4" | 6E-SKIT | all | Nitrile | body O-ring |
| | F-6E-SKIT | all | FKM | body O-ring |
| | P-6E-SKIT | all | EPDM | body O-ring |
| 1" | 8E-SKIT | all | Nitrile | body O-ring |
| | F-8E-SKIT | all | FKM | body O-ring |
| | P-8E-SKIT | all | EPDM | body O-ring |
| 1-1/4" | 10E-SKIT | all | Nitrile | body O-ring |
| | F-10E-SKIT | all | FKM | body O-ring |
| | P-10E-SKIT | all | EPDM | body O-ring |
| 1-1/2" | 12E-SKIT | all | Nitrile | body O-ring |
| | F-12E-SKIT | all | FKM | body O-ring |
| | P-12E-SKIT | all | EPDM | body O-ring |
| 2" | 16E-SKIT | all | Nitrile | body O-ring |
| | F-16E-SKIT | all | FKM | body O-ring |
| | P-16E-SKIT | all | EPDM | body O-ring |