

# ***Hose and Fittings for the Food and Beverage Industries***

**Bakeries**

**Bottling Plants**

**Breweries**

**Canneries**

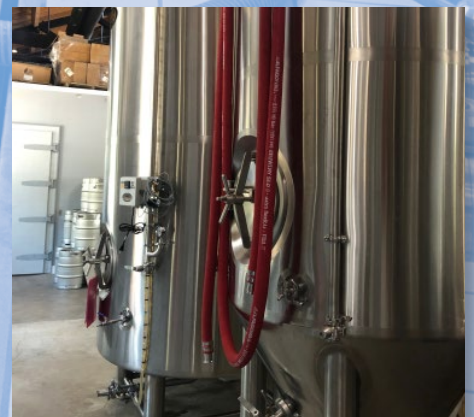
**Dairies**

**Distilleries**

**Food Packaging Plants**

**Meat and Poultry Plants**

**Wineries**



**Kuriyama of America, Inc.**



**EDITION 1019**

# Hose and Fittings for the Food and Beverage Industries

## Index

### Facilities Wash Down Hoses

Alfagomma® T350LL/LH Series.....	17
Alfagomma® T351LL/LG Series.....	17

### Food Grade Bulk Material Handling Hoses

Alfagomma® T720LG Series.....	19
Alfagomma® T714LG Series.....	19
Alfagomma® T760LE Series.....	19
Hose Tec® Stainless Steel, Lined Hose Assemblies.....	20
Hose Tec® Stainless Steel, Unlined Hose Assemblies.....	20
Tigerflex™ 2020™ Series.....	18
Tigerflex™ Voltbuster™ VLT-SD™ Series.....	18

### Food Grade Dry Material Handling Hoses

Tigerflex™ 2001™ Series.....	15
Tigerflex™ Voltbuster™ VOLT™ Series.....	15
Tigerflex™ WE™ Series.....	14
Tigerflex™ WT™ Series.....	14

### Food Grade Ducting Hoses

Flexair™ Urevent™ URE-CL™ Series.....	16
Flexair™ Urevent™ UREH-CL™ Series.....	16
Tigerflex™ GTFE™ Series.....	16

### Food Grade Liquid Transfer Hoses

Alfagomma® T405LL/LB Series.....	5
Alfagomma® T410LL/LB Series.....	4
Alfagomma® T426LB Series.....	5
Alfagomma® T455LL Series.....	5
Alfagomma® The BREWT™ T422LH Series.....	4
Kuri Tec® Clearbraid® K3130 Series.....	7
Kuri Tec® Clearbraid® K3150 Series.....	6
Kuri Tec® Clearbraid® Oil K3550 Series.....	8
Kuri Tec® Polyspring® K7160 Series.....	9
Kuri Tec® Polyspring® Oil K7560 Series.....	8
Kuri Tec® Polywire® K7130 Series.....	9
Kuri Tec® Polywire® Plus K7300 Series.....	10
Tigerflex™ FT™ Series.....	3
Tigerflex™ MILK™ Series.....	3
Tigerflex™ WSTF™ Series.....	3

### Food Grade Liquid Transfer Tubing

Kuri Tec® 2600 Series.....	13
Kuri Tec® K050 Series.....	12
Kuri Tec® K018 Series.....	13
Kuri Tec® Klearon™ 73 K010 Series.....	11

### Hose Clamps

Center Punch Clamps (Carbon Steel).....	32
Center Punch Clamps (Stainless).....	32

Ducting Hose Bridge Clamps (Flexair™).....	30
Ducting Hose Bridge Clamps (Tigerflex™).....	30
Kuri-Clamp™ Mini Worm Gear Clamps.....	31
Kuri-Clamp™ Standard Duty Worm Gear Clamps.....	31
Spiral Double Bolt Clamps (Carbon Steel).....	30
Spiral Double Bolt Clamps (Stainless).....	30

### Industrial Couplings

Part A Male Adapter x Female NPT.....	26
Part B Female Coupler x Male NPT.....	26
Part C Female Coupler x Hose Shank.....	26
Part D Female Coupler x Female NPT.....	27
Part E Male Adapter x Hose Shank.....	27
Part F Male Adapter x Male NPT.....	27

### KuriKrimp™ Ferrules

CRF-SS Series.....	29
--------------------	----

### Sanitary Ferrules

SCF-SS Series.....	28
--------------------	----

### Sanitary Fittings & Accessories

Hex Wrenches.....	23
Sanitary Clamps.....	22
Sanitary Hex Nut.....	23
Sanitary Hose Bumpers.....	22
Sanitary Hose Risers.....	22
Sanitary I-Line Clamps.....	23
Sanitary Fitting Bevel Seat x Hose Shank.....	23
Sanitary Fitting Female I-Line x Hose Shank.....	23
Sanitary Fitting Tri-Clamp x Hose Shank.....	21
Sanitary Fitting Tri-Clamp x Long Hose Shank.....	21
Sanitary Fitting Tri-Clamp x Short Hose Shank.....	21
Sanitary Tri-Clamp End Cap.....	22

### Sanitary Gaskets

Sanitary Buna-N Bevel Seat Gasket - Black.....	25
Sanitary Buna-N I-Line Gasket - Black.....	25
Sanitary Buna-N Tri-Clamp Gasket - Black.....	24
Sanitary Buna-N Tri-Clamp Gasket - White.....	24
Sanitary EPDM Bevel Seat Gasket - Black.....	25
Sanitary EPDM I-Line Gasket - Black.....	25
Sanitary EPDM Tri-Clamp Gasket - Black.....	24
Sanitary FKM Tri-Clamp Gasket - Black.....	24

### Sheet Rubber

FDA Silicone Sheet.....	34
FDA White Nitrile Sheet.....	33

Because we continually examine ways to improve our products, we reserve the right to alter specifications without notice.



# Hose and Fittings for the Food and Beverage Industries

## Food Grade Liquid Transfer Hoses

### Tigerflex™ Food Grade Liquid Suction Hose

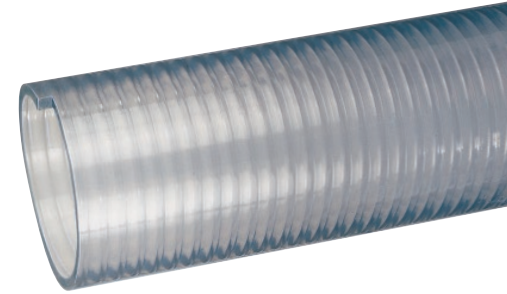
**General Applications:** Food grade liquids such as water, wine and juice

**Construction:** Food grade PVC tube with rigid PVC helix.

**Service Temperature Range:** -4°F (-20°C) to +150°F (+65°C)

**Compliances:** 3-A, FDA, Phthalate Free, RoHS, USDA

Part Number	Hose Inner Diameter (in)	Working Pressure (psi) at 68°F	Length (ft)	Weight (lbs/ft)
FT075X100	3/4	115	100	0.17
FT100X100	1	100	100	0.24
FT125X100	1 1/4	90	100	0.44
FT150X100	1 1/2	85	100	0.50
FT200X100	2	85	100	0.71
FT250X100	2 1/2	65	100	0.94
FT300X100	3	55	100	1.14
FT400X100/60	4	50	100/60	1.91
FT500X50/20	5	40	50/20	2.41
FT600X20	6	30	20	3.28
FT800X20	8	25	20	5.67



### Tigerflex™ Food Grade Liquid Suction & Discharge Hose

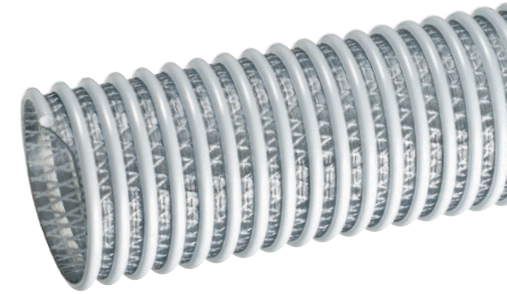
**General Applications:** Food grade liquids such as water, wine and juice

**Construction:** Food grade PVC tube, rigid PVC helix and fabric reinforcement.

**Service Temperature Range:** -4°F (-20°C) to +150°F (+65°C)

**Compliances:** 3-A, FDA, Phthalate Free, RoHS, USDA

Part Number	Hose Inner Diameter (in)	Working Pressure (psi) at 68°F	Length (ft)	Weight (lbs/ft)
WSTF150X100	1 1/2	110	100	0.42
WSTF200X100	2	100	100	0.74
WSTF300X100/20	3	100	100/20	1.13
WSTF400X100/20	4	75	100/20	1.74
WSTF600X100/20	6	70	100/20	3.88



### Tigerflex™ Food Grade Liquid Suction Hose

**General Applications:** Milk and dairy product transfer

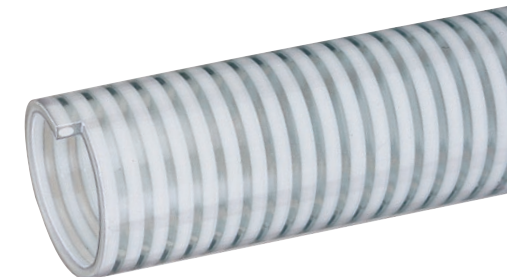
**Construction:** Food grade PVC tube with rigid PVC helix.

**Service Temperature Range (MILK Series):** -4°F (-20°C) to +150°F (+65°C)

**Service Temperature Range (MILK-LT Series):** -40°F (-40°C) to +150°F (+65°C)

**Compliances:** 3-A, FDA, Phthalate Free, RoHS, USDA

Part Number	Hose Inner Diameter (in)	Working Pressure (psi) at 68°F	Length (ft)	Weight (lbs/ft)
MILK150X100	1 1/2	75	100	0.45
MILK200X100	2	75	100	0.63
MILK250X100	2 1/2	55	100	0.81
MILK300X100	3	55	100	1.18
MILK-LT150X100	1 1/2	75	100	0.45
MILK-LT200X100	2	75	100	0.65
MILK-LT250X100	2 1/2	55	100	0.84
MILK-LT300X100	3	55	100	1.20



Because we continually examine ways to improve our products, we reserve the right to alter specifications without notice.

# Hose and Fittings for the Food and Beverage Industries

## Food Grade Liquid Transfer Hoses (Alcohols)

### Alfagomma® THE BREWT™ Suction & Discharge Brewery Hose

**General Applications:** Specially designed for wine, beer and spirits up to 95 proof

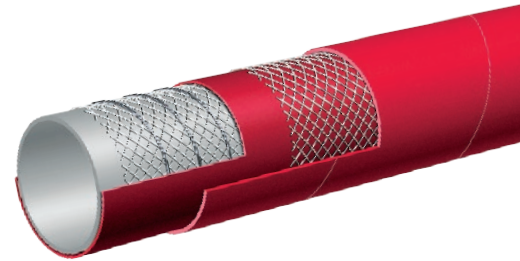
**Construction:** White, food grade Chlorobutyl tube, high tensile textile cords, steel helix wire and NR/EPDM cover.

**Service Temperature Range:** -22°F (-30°C) to +226°F (+108°C)

**Compliances:** 3-A, FDA, Phthalate Free



Part Number	Nominal ID		Nominal OD		Working Pressure (psi) at 70°F	Length (ft)	Weight (lbs/ft)
	(in)	(mm)	(in)	(mm)			
T422LH100X100	1	25	1.38	35	150	100	0.47
T422LH125X100	1 1/4	32	1.65	42	150	100	0.58
T422LH150X100	1 1/2	38	1.89	48	150	100	0.67
T422LH200X100	2	51	2.40	61	150	100	0.88
T422LH250X100	2 1/2	63	3.00	76	150	100	1.59
T422LH300X100	3	76	3.54	90	150	100	2.04
T422LH400X100	4	102	4.57	116	150	100	2.67



### Alfagomma® Crush Resistant Food & Beverage Suction & Discharge Hose

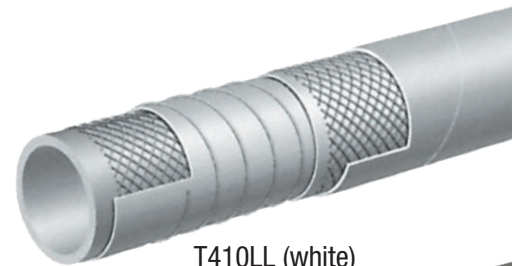
**General Applications:** Specially designed for wine, beer and spirits up to 95 proof

**Construction:** White, food grade Chlorobutyl tube, high tensile textile cords, PET helix and EPDM cover.

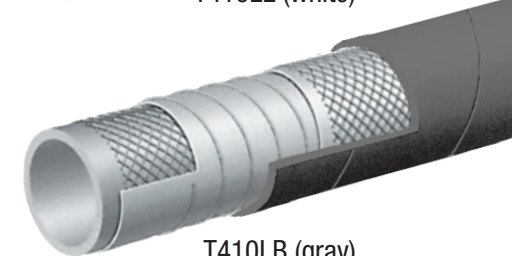
**Service Temperature Range:** -22°F (-30°C) to +226°F (+108°C)

**Compliances:** 3-A, FDA, Phthalate Free

Part Number	Nominal ID		Nominal OD		Working Pressure (psi) at 70°F	Length (ft)	Weight (lbs/ft)
	(in)	(mm)	(in)	(mm)			
T410LL100X100	1	25	1.46	37	240	100	0.60
T410LB100X100	1	25	1.46	37	240	100	0.60
T410LL150X100	1 1/2	38	2.05	52	240	100	1.00
T410LL200X100	2	51	2.56	65	240	100	1.29
T410LB200X100	2	51	2.56	65	240	100	1.29
T410LL300X100	3	76	3.62	92	240	100	2.23
T410LB300X100	3	76	3.62	92	240	100	2.23



T410LL (white)



T410LB (gray)

Because we continually examine ways to improve our products, we reserve the right to alter specifications without notice.



# Hose and Fittings for the Food and Beverage Industries

## Food Grade Liquid Transfer Hoses (Oily Liquids)

### Alfagomma® Liquid Food Suction & Discharge Hose

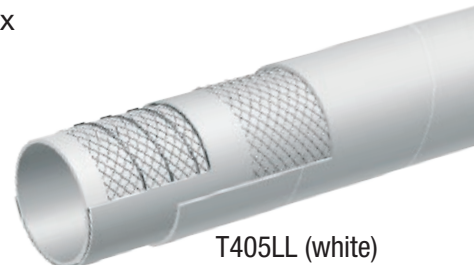
**General Applications:** Transfer of oily food and beverage

**Construction:** White, food grade NBR tube, high tensile textile cords, steel helix wire and NBR/PVC cover.

**Service Temperature Range:** -22°F (-30°C) to +212°F (+100°C)

**Compliances:** 3-A, FDA, Phthalate Free

Part Number	Nominal ID		Nominal OD		Working Pressure (psi) at 70°F	Length (ft)	Weight (lbs/ft)
	(in)	(mm)	(in)	(mm)			
T405LL100X100	1	25	1.46	37	150	100	0.61
T405LL150X100	1 1/2	38	1.97	50	150	100	0.84
T405LB150X100	1 1/2	38	1.97	50	150	100	0.84
T405LL200X100	2	51	2.48	63	150	100	1.08
T405LB200X100	2	51	2.48	63	150	100	1.08
T405LL300X100	3	76	3.46	88	150	100	1.71
T405LB300X100	3	76	3.46	88	150	100	1.71
T405LL400X100	4	102	4.57	116	150	100	2.36
T405LB400X100	4	102	4.57	116	150	100	2.36



T405LL (white)



T405LB (gray)

### Alfagomma® Corrugated, Liquid Food Suction & Discharge Hose

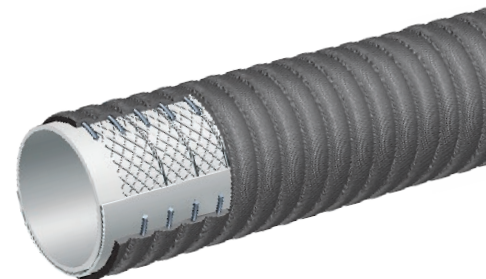
**General Applications:** Transfer of oily food and beverage

**Construction:** White, food grade NBR tube, high tensile textile cords, steel helix wire and NBR/PVC cover.

**Service Temperature Range:** -22°F (-30°C) to +176°F (+80°C)

**Compliances:** 3-A, FDA, Phthalate Free

Part Number	Nominal ID		Nominal OD		Working Pressure (psi) at 70°F	Length (ft)	Weight (lbs/ft)
	(in)	(mm)	(in)	(mm)			
T426LB300X100	3	76	3.62	92	150	100	1.84
T426LB400X100	4	102	4.65	118	150	100	2.69



### Alfagomma® Liquid Food Discharge Hose

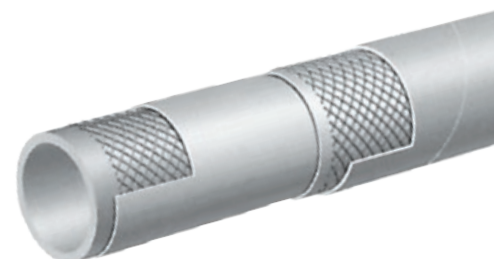
**General Applications:** Transfer of oily food and beverage

**Construction:** White, food grade NBR tube, high tensile textile cords and NBR/PVC blend cover.

**Service Temperature Range:** -22°F (-30°C) to +176°F (+80°C)

**Compliances:** 3-A, FDA, Phthalate Free

Part Number	Nominal ID		Nominal OD		Working Pressure (psi) at 70°F	Length (ft)	Weight (lbs/ft)
	(in)	(mm)	(in)	(mm)			
T455LL150X100	1 1/2	38	1.89	48	150	100	0.60
T455LL200X100	2	51	2.48	63	150	100	0.95
T455LL300X100	3	76	3.46	88	150	100	1.38



Because we continually examine ways to improve our products, we reserve the right to alter specifications without notice.

# Hose and Fittings for the Food and Beverage Industries

## Food Grade Liquid Transfer Hoses

### Kuri Tec® Clearbraid® Yarn Reinforced Food & Beverage Hose

**General Applications:** Transfer of potable water, liquid foods and beverages

**Construction:** Food grade PVC with yarn reinforcement.

**Service Temperature Range:** +25°F (-4°C) to +150°F (+65°C)

**Compliances:** 3A, FDA, NSF, Phthalate Free, RoHS, USDA, USP Class VI



CERTIFIED UNDER STANDARD 51



Part Number	Nominal ID		Nominal OD		Working Pressure (psi) at 70°F	Length (ft)	Weight (lbs/ft)
	(in)	(mm)	(in)	(mm)			
K3150-03X100	3/16	4.8	0.375	9.5	250	100	0.04
K3150-03X300	3/16	4.8	0.375	9.5	250	300	0.04
K3150-04X100	1/4	6.5	0.438	11.1	250	100	0.06
K3150-04X300	1/4	6.5	0.438	11.1	250	300	0.06
K3150-05X100	5/16	7.9	0.531	13.5	250	100	0.08
K3150-05X300	5/16	7.9	0.531	13.5	250	300	0.08
K3150-06X100	3/8	9.5	0.594	15.1	225	100	0.09
K3150-06X300	3/8	9.5	0.594	15.1	225	300	0.09
K3150-08X100	1/2	12.7	0.750	19.1	200	100	0.13
K3150-08X300	1/2	12.7	0.750	19.1	200	300	0.13
K3150-10X100	5/8	15.9	0.891	22.6	200	100	0.18
K3150-10X200	5/8	15.9	0.891	22.6	200	200	0.18
K3150-12X100	3/4	19.1	1.031	26.2	150	100	0.22
K3150-12X200	3/4	19.1	1.031	26.2	150	200	0.22
K3150-16X100	1	25.4	1.300	33.0	125	100	0.30
K3150-16X200	1	25.4	1.300	33.0	125	200	0.30
K3150-20X50	1 1/4	31.8	1.620	41.1	100	50	0.45
K3150-20X100	1 1/4	31.8	1.620	41.1	100	100	0.45
K3150-24X50	1 1/2	38.1	1.938	49.2	100	50	0.64
K3150-24X100	1 1/2	38.1	1.938	49.2	100	100	0.64
K3150-32X50	2	50.8	2.490	63.2	75	50	0.94
K3150X32X100	2	50.8	2.490	63.2	75	100	0.94
K3150-MM04X100	0.157	4	0.354	9.0	250	100	0.04
K3150-MM06X100	0.236	6	0.433	11.0	250	100	0.06
K3150-MM08X100	0.315	8	0.531	13.5	250	100	0.08
K3150-MM10X100	0.394	10	0.630	16.0	225	100	0.10
K3150-MM12X100	0.472	12	0.709	19.0	200	100	0.12
K3150-MM19X100	0.748	19	1.024	26.0	150	100	0.21



Because we continually examine ways to improve our products, we reserve the right to alter specifications without notice.

# Hose and Fittings for the Food and Beverage Industries

## Food Grade Liquid Transfer Hoses

### Kuri Tec® Clearbraided® Heavy Duty Yarn Reinforced PVC Food & Beverage Hose

**General Applications:** Transfer of potable water, liquid foods and beverages

**Construction:** Food grade PVC with yarn reinforcement.

**Service Temperature Range:** +25°F (-4°C) to +150°F (+65°C)

**Compliances:** 3-A, FDA, NSF, Phthalate Free, RoHS, UL, USDA , USP Class VI



CERTIFIED UNDER STANDARD 51



Part Number	Nominal ID		Nominal OD		Working Pressure (psi) at 70°F	Length (ft)	Weight (lbs/ft)
	(in)	(mm)	(in)	(mm)			
K3130-02X100	1/8	3.2	0.328	8.3	350	100	0.04
K3130-02X300	1/8	3.2	0.328	8.3	350	300	0.04
K3130-03X100	3/16	4.8	0.406	10.3	350	100	0.06
K3130-03X300	3/16	4.8	0.406	10.3	350	300	0.06
K3130-04X100	1/4	6.5	0.500	12.7	350	100	0.08
K3130-04X300	1/4	6.5	0.500	12.7	350	300	0.08
K3130-05X100	5/16	7.9	0.563	14.3	275	100	0.09
K3130-05X300	5/16	7.9	0.563	14.3	275	300	0.09
K3130-06X100	3/8	9.5	0.625	15.9	275	100	0.11
K3130-06X300	3/8	9.5	0.625	15.9	275	300	0.11
K3130-08X100	1/2	12.7	0.813	20.7	250	100	0.17
K3130-08X300	1/2	12.7	0.813	20.7	250	300	0.17
K3130-10X100	5/8	15.9	1.000	25.4	225	100	0.26
K3130-10X200	5/8	15.9	1.000	25.4	225	200	0.26
K3130-12X100	3/4	19.1	1.125	28.6	200	100	0.30
K3130-12X200	3/4	19.1	1.125	28.6	200	200	0.30
K3130-16X100	1	25.4	1.375	34.9	150	100	0.38
K3130-16X200	1	25.4	1.375	34.9	150	200	0.38
K3130-20X50	1 1/4	31.8	1.750	44.5	125	50	0.64
K3130-20X100	1 1/4	31.8	1.750	44.5	125	100	0.64
K3130-24X50	1 1/2	38.1	2.000	50.8	100	50	0.75
K3130-24X100	1 1/2	38.1	2.000	50.8	100	100	0.75
K3130-32X50	2	50.8	2.500	63.5	75	50	0.96
K3130-32X100	2	50.8	2.500	63.5	75	100	0.96



Because we continually examine ways to improve our products, we reserve the right to alter specifications without notice.





# Hose and Fittings for the Food and Beverage Industries

## Food Grade Liquid Transfer Hoses

### Kuri Tec® Clearbraided® Oil Yarn Reinforced Food & Beverage Hose

**General Applications:** Transfer of oily food products such as olive, sunflower, soybean and peanut oils

**Construction:** Oil resistant food grade PVC with yarn reinforcement.

**Service Temperature Range:** +25°F (-4°C) to +150°F (+65°C)

**Compliances:** FDA, NSF, Phthalate Free, RoHS

## CLEARBRAID® OIL



Part Number	Nominal ID		Nominal OD		Working Pressure (psi) at 70°F	Length (ft)	Weight (lbs/ft)
	(in)	(mm)	(in)	(mm)			
K3550-04X100	1/4	6.5	0.438	11.1	250	100	0.06
K3550-06X100	3/8	9.5	0.594	15.1	225	100	0.09
K3550-08X100	1/2	12.7	0.750	19.1	200	100	0.13
K3550-12X100	3/4	19.1	1.031	26.2	150	100	0.22
K3550-16X100	1	25.4	1.300	33.0	125	100	0.30
K3550-20X100	1 1/4	31.8	1.620	41.1	100	100	0.46
K3550-24X100	1 1/2	38.1	1.938	49.2	100	100	0.64
K3550-32X100	2	50.8	2.490	63.2	75	100	0.94



### Kuri Tec® Polyspring® Oil Wire Reinforced Food & Beverage Vacuum, Suction & Transfer Hose

**General Applications:** Transfer of oily food products such as olive, sunflower, soybean and peanut oils (vacuum rated at 29.9 Hg (in))

**Construction:** Oil resistant food grade PVC with steel wire helix.

**Service Temperature Range:** +25°F (-4°C) to +150°F (+65°C)

**Compliances:** FDA, NSF, Phthalate Free, RoHS

## POLYSPRING® OIL



Part Number	Nominal ID		Nominal OD		Working Pressure (psi) at 70°F	Length (ft)	Weight (lbs/ft)
	(in)	(mm)	(in)	(mm)			
K7560-08X100	1/2	12.7	0.750	19.1	100	100	0.08
K7560-12X100	3/4	19.1	1.031	26.2	70	100	0.12
K7560-16X100	1	25.4	1.297	32.9	70	100	0.16
K7560-20X100	1 1/4	31.8	1.609	40.9	70	100	0.27
K7560-24X100	1 1/2	38.1	1.860	47.2	50	100	0.31
K7560-32X100	2	50.8	2.391	60.7	50	100	0.44
K7560-24X50	2 1/2	63.5	3.000	76.2	50	50	0.72
K7560-32X50	3	76.2	3.500	88.9	50	50	0.84



\*Clearbraided® Oil and Polyspring® Oil exhibit up to 3 times better oil resistance than standard PVC hoses. Meets ARPM (Association for Rubber Products Manufacturers) Class A (High Oil Resistance)

Because we continually examine ways to improve our products, we reserve the right to alter specifications without notice.



# Hose and Fittings for the Food and Beverage Industries

## Food Grade Liquid Transfer Hoses

### Kuri Tec® Polyspring® Wire Reinforced Food & Beverage Vacuum, Suction & Transfer Hose

**General Applications:** Transfer of potable water, liquid foods and beverages (vacuum rated at 29.9 Hg (in))

**Construction:** Food grade PVC with steel wire helix.

**Service Temperature Range:** +25°F (-4°C) to +150°F (+65°C)

**Compliances:** 3A, FDA, NSF, Phthalate Free, RoHS, USDA, USP Class VI



CERTIFIED UNDER STANDARD 51

Part Number	Nominal ID		Nominal OD		Working Pressure (psi) at 70°F	Length (ft)	Weight (lbs/ft)
	(in)	(mm)	(in)	(mm)			
K7160-04X50	1/4	6.4	0.460	11.7	150	50	0.07
K7160-04X100	1/4	6.4	0.460	11.7	150	100	0.07
K7160-06X50	3/8	9.5	0.600	15.2	100	50	0.11
K7160-06X100	3/8	9.5	0.600	15.2	100	100	0.11
K7160-08X50	1/2	12.7	0.750	19.1	100	50	0.15
K7160-08X100	1/2	12.7	0.750	19.1	100	100	0.15
K7160-10X50	5/8	15.9	0.891	22.6	100	50	0.19
K7160-10X100	5/8	15.9	0.891	22.6	100	100	0.19
K7160-12X50	3/4	19.1	1.031	26.2	70	50	0.24
K7160-12X100	3/4	19.1	1.031	26.2	70	100	0.24
K7160-16X50	1	25.4	1.297	32.9	70	50	0.33
K7160-16X100	1	25.4	1.297	32.9	70	100	0.33
K7160-20X50	1 1/4	31.8	1.609	40.9	70	50	0.50
K7160-24X50	1 1/2	38.1	1.860	47.2	50	50	0.58
K7160-32X50	2	50.8	2.391	60.7	50	50	0.84
K7160-36X50	2 1/4	57.2	2.750	69.9	50	50	1.16
K7160-40X50	2 1/2	63.5	3.000	76.2	50	50	1.38
K7160-48X25	3	76.2	3.500	88.9	50	25	1.62
K7160-48X50	3	76.2	3.500	88.9	50	50	1.62



### Kuri Tec® Polywire® Heavy Duty, Wire Reinforced Food & Beverage Vacuum, Suction & Transfer Hose

**General Applications:** Transfer of potable water, liquid foods and beverages (vacuum rated at 29.9 Hg (in))

**Construction:** Food grade PVC with steel wire helix.

**Service Temperature Range:** +25°F (-4°C) to +150°F (+65°C)

**Compliances:** 3-A, FDA, NSF, Phthalate Free, RoHS, UL, USDA, USP Class VI



CERTIFIED UNDER STANDARD 51

Part Number	Nominal ID		Nominal OD		Working Pressure (psi) at 70°F	Length (ft)	Weight (lbs/ft)
	(in)	(mm)	(in)	(mm)			
K7130-04X100	1/4	6.4	0.500	12.7	250	100	0.10
K7130-06X100	3/8	9.5	0.625	15.9	150	100	0.13
K7130-08X100	1/2	12.7	0.813	20.7	150	100	0.21
K7130-10X100	5/8	15.9	1.000	25.4	150	100	0.30
K7130-12X100	3/4	19.1	1.125	28.6	150	100	0.36
K7130-16X100	1	25.4	1.375	34.9	100	100	0.44
K7130-20X50	1 1/4	31.8	1.750	44.5	100	50	0.74
K7130-24X50	1 1/2	38.1	2.000	50.8	100	50	0.84
K7130-32X50	2	50.8	2.500	63.5	100	50	1.12



Because we continually examine ways to improve our products, we reserve the right to alter specifications without notice.



# Hose and Fittings for the Food and Beverage Industries

## Food Grade Liquid Transfer Hoses

### Kuri Tec® Polywire® Plus Food & Beverage Vacuum, Suction, Pressure & Transfer Hose

**General Applications:** Transfer of potable water, liquid foods and beverages (vacuum rated at 29.9 Hg (in))

**Construction:** Food grade PVC with steel wire helix & yarn reinforcement.

**Service Temperature Range:** +15°F (-9°C) to +150°F (+65°C)

**Compliances:** 3A, FDA, NSF, Phthalate Free, RoHS, USDA



CERTIFIED UNDER STANDARD 51

Part Number	Nominal ID		Nominal OD		Working Pressure (psi) at 70°F	Length (ft)	Weight (lbs/ft)
	(in)	(mm)	(in)	(mm)			
K7300-08X25	1/2	12.7	0.906	23.0	250	25	0.26
K7300-08X50	1/2	12.7	0.906	23.0	250	50	0.26
K7300-08X100	1/2	12.7	0.906	23.0	250	100	0.26
K7300-12X25	3/4	19.1	1.196	30.4	225	25	0.40
K7300-12X50	3/4	19.1	1.196	30.4	225	50	0.40
K7300-12X100	3/4	19.1	1.196	30.4	225	100	0.40
K7300-16X25	1	25.4	1.464	37.2	225	25	0.53
K7300-16X50	1	25.4	1.464	37.2	225	50	0.53
K7300-16X100	1	25.4	1.464	37.2	225	100	0.53
K7300-20X25	1 1/4	31.8	1.780	45.2	175	25	0.74
K7300-20X50	1 1/4	31.8	1.780	45.2	175	50	0.74
K7300-24X25	1 1/2	38.1	2.030	51.6	175	25	0.86
K7300-24X50	1 1/2	38.1	2.030	51.6	175	50	0.86
K7300-32X25	2	50.8	2.600	66.0	150	25	1.28
K7300-32X50	2	50.8	2.600	66.0	150	50	1.28



Because we continually examine ways to improve our products, we reserve the right to alter specifications without notice.





# Hose and Fittings for the Food and Beverage Industries

## Food Grade Liquid Transfer Tubing

### Kuri Tec® Klearon™ 73 Clear Food Grade PVC Tubing

**General Applications:** Transfer of potable water, liquid foods and beverages

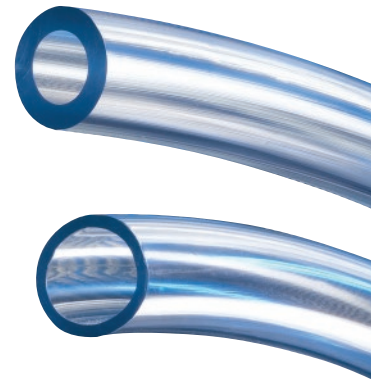
**Construction:** 73 Shore "A" durometer, food grade PVC tube.

**Service Temperature Range:** +25°F (-4°C) to +150°F (+65°C)

**Compliances:** 3-A, FDA, Phthalate Free, NSF, RoHS, UL, USDA, USP



CERTIFIED UNDER STANDARD 51



Available in different wall thicknesses for different pressure requirements.

Part Number	Nominal ID		Nominal OD		Nominal Wall		Working Pressure (psi) at 70°F (20°C)	Standard Length Ctn/Coils (ft)	Weight (lbs/ft)
	(in)	(mm)	(in)	(mm)	(in)	(mm)			
K010-0204X100	1/8	3.2	1/4	6.4	1/16	1.6	65	100	0.020
K010-0304X100	3/16	4.8	1/4	6.4	1/32	0.8	50	100	0.012
K010-0305X100	3/16	4.8	5/16	7.9	1/16	1.6	55	100	0.027
K010-0306X100	3/16	4.8	3/8	9.5	3/32	2.4	60	100	0.045
K010-0406X100	1/4	6.4	3/8	9.5	1/16	1.6	55	100	0.034
K010-0407X100	1/4	6.4	7/16	11.1	3/32	2.4	58	100	0.055
K010-0408X100	1/4	6.4	1/2	12.7	1/8	3.2	60	100	0.080
K010-0507X100	5/16	7.9	7/16	11.1	1/16	1.6	50	100	0.040
K010-0508X100	5/16	7.9	1/2	12.7	3/32	2.4	55	100	0.065
K010-0509X100	5/16	7.9	9/16	14.3	1/8	3.2	60	100	0.094
K010-0608X100	3/8	9.5	1/2	12.7	1/16	1.6	45	100	0.047
K010-0609X100	3/8	9.5	9/16	14.3	3/32	2.4	50	100	0.075
K010-0610X100	3/8	9.5	5/8	15.9	1/8	3.2	55	100	0.107
K010-0709X100	7/16	11.1	9/16	14.3	1/16	1.6	35	100	0.060
K010-0810X100	1/2	12.7	5/8	15.9	1/16	1.6	30	100	0.060
K010-0811X100	1/2	12.7	11/16	17.5	3/32	2.4	40	100	0.095
K010-0812X100	1/2	12.7	3/4	19.1	1/8	3.2	45	100	0.134
K010-1012X100	5/8	15.9	3/4	19.1	1/16	1.6	25	100	0.082
K010-1013X100	5/8	15.9	13/16	20.6	3/32	2.4	35	100	0.116
K010-1014X100	5/8	15.9	7/8	22.2	1/8	3.2	40	100	0.161
K010-1216X100	3/4	19.1	1	25.4	1/8	3.2	35	100	0.188
K010-1218X100	3/4	19.1	1 1/8	28.6	3/16	4.8	40	100	0.300
K010-1220X100	3/4	19.1	1 1/4	31.8	1/4	6.4	45	100	0.429
K010-1418X100	7/8	22.2	1 1/8	28.6	1/8	3.2	30	100	0.214
K010-1420X100	7/8	22.2	1 1/4	31.8	3/16	4.8	35	100	0.341
K010-1620X100	1	25.4	1 1/4	31.8	1/8	3.2	25	100	0.241
K010-1622X100	1	25.4	1 3/8	34.9	3/16	4.8	30	100	0.382
K010-1624X100	1	25.4	1 1/2	38.1	1/4	6.4	35	100	0.536
K010-2024X100	1 1/4	31.8	1 1/2	38.1	1/8	3.2	20	50	0.148
K010-2026X100	1 1/4	31.8	1 5/8	41.3	3/16	4.8	30	50	0.231
K010-2028X100	1 1/4	31.8	1 3/4	44.5	1/4	6.4	40	50	0.322
K010-2430X100	1 1/2	38.1	1 7/8	47.6	3/16	4.8	30	50	0.271
K010-2432X100	1 1/2	38.1	2	50.8	1/4	6.4	35	50	0.375
K010-3240X50	2	50.8	2 1/2	63.5	1/4	6.4	35	50	0.482

Because we continually examine ways to improve our products, we reserve the right to alter specifications without notice.



# Hose and Fittings for the Food and Beverage Industries

## Food Grade Liquid Transfer Tubing

### Kuri Tec® Clear PVC Tubing

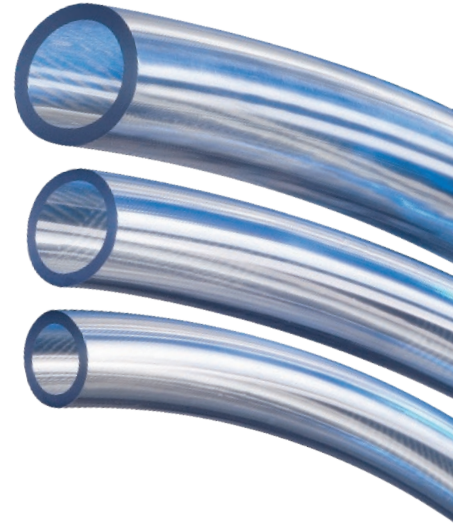
**General Applications:** Transfer of potable water, liquid foods and beverages

**Construction:** 75 Shore "A" durometer, food grade PVC.

**Service Temperature Range:** +25°F (-4°C) to +150°F (+65°C)

**Compliances:** FDA, Phthalate Free, RoHS

Part Number	Nominal ID		Nominal OD		Working Pressure (psi) at 68°F	Length (ft)	Weight (lbs/ft)
	(in)	(mm)	(in)	(mm)			
K050-0204X100	1/8	3.2	1/4	6.4	65	100	0.020
K050-0305X100	3/16	4.8	5/16	7.9	55	100	0.027
K050-0406X100	1/4	6.4	3/8	9.5	55	100	0.034
K050-0408X100	1/4	6.4	1/2	12.7	60	100	0.080
K050-0507X100	5/16	7.9	7/16	11.1	50	100	0.040
K050-0608X100	3/8	9.5	1/2	12.7	45	100	0.047
K050-0609X100	3/8	9.5	9/16	14.3	50	100	0.075
K050-0610X100	3/8	9.5	5/8	15.9	55	100	0.107
K050-0810X100	1/2	12.7	5/8	15.9	30	100	0.060
K050-0812X100	1/2	12.7	3/4	19.1	45	100	0.134
K050-1013X100	5/8	15.9	13/16	20.6	35	100	0.116
K050-1014X100	5/8	15.9	7/8	22.2	40	100	0.161
K050-1216X100	3/4	19.1	1	25.4	35	100	0.188
K050-1418X100	7/8	22.2	1 1/8	28.6	30	100	0.214
K050-1620X100	1	25.4	1 1/4	31.8	25	100	0.241
K050-2024X50	1 1/4	31.8	1 1/2	38.1	20	50	0.296
K050-2430X50	1 1/2	38.1	1 7/8	47.6	30	50	0.542
K050-2432X50	1 1/2	38.1	2	50.8	35	50	0.750
K050-3240X50	2	50.8	2 1/2	63.5	35	50	0.964



Because we continually examine ways to improve our products, we reserve the right to alter specifications without notice.



# Hose and Fittings for the Food and Beverage Industries

## Food Grade Liquid Transfer Tubing

### Kuri Tec® Extra Flexible, Clear PVC Tubing

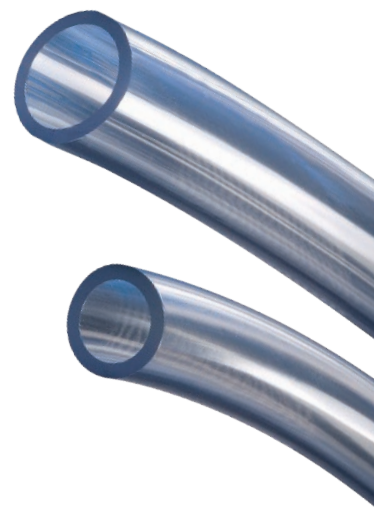
**General Applications:** Transfer of potable water, liquid foods and beverages

**Construction:** 68 Shore "A" durometer, food grade PVC.

**Service Temperature Range:** +25°F (-4°C) to +150°F (+65°C)

**Compliances:** FDA, Phthalate Free, RoHS

Part Number	Nominal ID		Nominal OD		Working Pressure (psi) at 70°F	Length (ft)	Weight (lbs/ft)
	(in)	(mm)	(in)	(mm)			
K018-0204X100	1/8	3.2	1/4	6.4	65	100	0.020
K018-0305X100	3/16	4.8	5/16	7.9	55	100	0.027
K018-0306X100	3/16	4.8	3/8	9.5	60	100	0.045
K018-0406X100	1/4	6.4	3/8	9.5	55	100	0.034
K018-0407X100	1/4	6.4	7/16	11.1	58	100	0.055
K018-0507X100	5/16	7.9	7/16	11.1	50	100	0.040
K018-0508X100	5/16	7.9	1/2	12.7	55	100	0.065
K018-0608X100	3/8	9.5	1/2	12.7	45	100	0.047
K018-0609X100	3/8	9.5	9/16	14.3	50	100	0.075
K018-0709X100	7/16	11.1	9/16	14.3	35	100	0.053
K018-0810X100	1/2	12.7	5/8	15.9	30	100	0.060
K018-1013X100	5/8	15.9	13/16	20.6	35	100	0.116



### Kuri Tec® Clear, Ether-Based Polyurethane Tubing

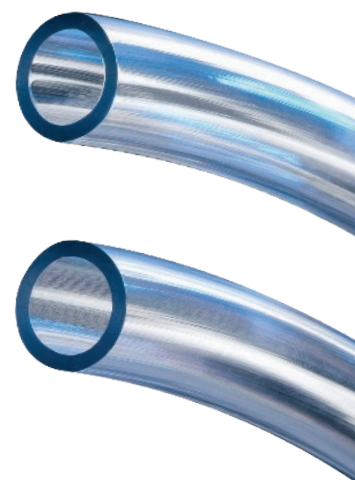
**General Applications:** Transfer of oily liquid foods such as olive, sunflower and soybean oils

**Construction:** 85 Shore "A" food grade, ether-based polyurethane.

**Service Temperature Range:** -40°F (-40°C) to +175°F (+80°C)

**Compliances:** FDA, Phthalate Free, RoHS

Part Number	Nominal ID		Nominal OD		Working Pressure (psi) at 70°F	Length (ft)	Weight (lbs/ft)
	(in)	(mm)	(in)	(mm)			
2600-0204X100	1/8	3.2	1/4	6.4	100	100	0.020
2600-0305X100	3/16	4.8	5/16	7.9	75	100	0.030
2600-0406X100	1/4	6.4	3/8	9.5	60	100	0.035
2600-0507X100	5/16	7.9	7/16	11.1	50	100	0.040
2600-0608X100	3/8	9.5	1/2	12.7	45	100	0.050
2600-0812X100	1/2	12.7	3/4	19.1	60	100	0.130



Because we continually examine ways to improve our products, we reserve the right to alter specifications without notice.

# Hose and Fittings for the Food and Beverage Industries

## Food Grade Dry Material Handling Hoses

### Tigerflex™ Food Grade PVC Material Handling Hose

**General Applications:** Food processing, manufacturing, pharmaceuticals, plastics, poultry

**Construction:** Food grade PVC tube with rigid PVC helix.

**Service Temperature Range:** -4°F (-20°C) to +150°F (+65°C)

**Compliances:** 3A, FDA, Phthalate Free, RoHS, USDA

Part Number	Hose Inner Diameter (in)	Working Pressure (psi) at 68°F	Length (ft)	Weight (lbs/ft)
WT100X100/50	1	55	100/50	0.21
WT125X100/50	1 1/4	50	100/50	0.28
WT150X100/50	1 1/2	50	100/50	0.35
WT200X100/50	2	40	100/50	0.56
WT225X100/50	2 1/4	40	100/50	0.65
WT250X100/50	2 1/2	40	100/50	0.77
WT300X100/50	3	40	100/50	1.10
WT350X100/50	3 1/2	35	100/50	1.48
WT400X100/50	4	35	100/50	1.80
WT400x100/50	4	35	100/50	1.80
WT500X50/20	5	30	50/20	2.34
WT600X50/20	6	30	50/20	3.70
WT800X50/20	8	20	50/20	5.53
WT45MX100/50	45 mm	45	100/50	0.44
WT57MX100/50	57 mm	40	100/50	0.64
WT60MX100/50	60 mm	40	100/50	0.71



### Tigerflex™ Food Grade PVC Material Handling Hose with Grounding Wire

**General Applications:** Food processing, manufacturing, pharmaceuticals, plastics, poultry

**Construction:** Food grade PVC tube with rigid PVC helix and grounding wire.

**Service Temperature Range:** -4°F (-20°C) to +150°F (+65°C)

**Compliances:** FDA, Phthalate Free, RoHS, USDA

Part Number	Hose Inner Diameter (in)	Working Pressure (psi) at 68°F	Length (ft)	Weight (lbs/ft)
WE125X100/50	1 1/4	50	100/50	0.33
WE150X100/50	1 1/2	50	100/50	0.43
WE200X100/50	2	40	100/50	0.58
WE225X100/50	2 1/4	40	100/50	0.65
WE250X100/50	2 1/2	40	100/50	0.89
WE300X100/50	3	40	100/50	1.25
WE350X100/50	3 1/2	35	100/50	1.55
WE400X100/50	4	35	100/50	1.93
WE500X50/20	5	30	50/20	2.40
WE600X50/20	6	30	50/20	3.70
WE800X50/20	8	20	50/20	5.62
WE45MX100/50	45 mm	45	100/50	0.46
WE57MX100/50	57 mm	40	100/50	0.64
WE60MX100/50	60 mm	40	100/50	0.71



Because we continually examine ways to improve our products, we reserve the right to alter specifications without notice.



# Hose and Fittings for the Food and Beverage Industries

## Food Grade Dry Material Handling Hoses (High Abrasion)

### Tigerflex™ Food Grade Polyurethane Lined Material Handling Hose with Grounding Wire

**General Applications:** Food processing, manufacturing, pharmaceuticals, plastics

**Construction:** Food grade, abrasion resistant polyurethane liner, PVC helix, with PVC cover and grounding wire.

**Service Temperature Range:** -40°F (-40°C) to +150°F (+65°C)

**Compliances:** FDA, Phthalate Free, RoHS

Part Number	Hose Inner Diameter (in)	Working Pressure (psi) at 68°F	Length (ft)	Weight (lbs/ft)
2001-150X60	1 1/2	50	60	0.48
2001-200X60	2	40	60	0.67
2001-250X60	2 1/2	40	60	0.92
2001-300X60	3	40	60	1.35
2001-400X60	4	35	60	2.17
2001-500X20	5	35	20	2.77
2001-600X20	6	30	20	3.90
2001-800X20	8	30	20	6.65



### Tigerflex™ Voltbuster™ Highly Static Dissipative Polyurethane Material Handling Hose with Grounding Wire

**General Applications:** Food processing, manufacturing, pharmaceuticals, plastics

**Construction:** Food grade, abrasion resistant polyurethane tube, PVC helix and grounding wire.

**Service Temperature Range:** -40°F (-40°C) to +150°F (+65°C)

**Compliances:** FDA, Phthalate Free, RoHS

Part Number	Hose Inner Diameter (in)	Working Pressure (psi) at 68°F	Length (ft)	Weight (lbs/ft)
VOLT150X100	1 1/2	40	100	0.31
VOLT150X60	1 1/2	40	60	0.31
VOLT200X100	2	40	100	0.61
VOLT200X60	2	40	60	0.61
VOLT250X100	2 1/2	40	100	0.76
VOLT300X100	3	40	100	0.91
VOLT400X100	4	35	100	1.70
VOLT400X20	4	35	20	1.70
VOLT500X20	5	35	20	2.13
VOLT600X20	6	30	20	2.53
VOLT800X20	8	30	20	3.30



Because we continually examine ways to improve our products, we reserve the right to alter specifications without notice.

# Hose and Fittings for the Food and Beverage Industries

## Food Grade Ducting Hoses

### Flexair™ Urevent™ Food Grade Polyurethane Ducting/Material Handling Hose

**General Applications:** In plant transfer of dry materials and powders

**Construction:** Food grade, ether polyurethane tube with steel wire helix.

**Service Temperature Range:** -65°F (-54°C) to +225°F (+107°C)

**Compliances:** FDA, Phthalate Free, ROHS

Part Number	Hose Inner Diameter (in)	Working Pressure (psi) at 68°F	Length (ft)	Weight (lbs/ft)
URE-CL200X25	2	31	25	0.36
URE-CL250X25	2 1/2	31	25	0.40
URE-CL300X25	3	30	25	0.44
URE-CL400X25	4	26	25	0.62
URE-CL500X25	5	22	25	0.65
URE-CL600X25	6	20	25	0.84
URE-CL800X25	8	14	25	1.40
URE-CL1000X25	10	11	25	1.93
URE-CL1200X25	12	10	25	2.26

### Flexair™ Urevent™ Heavy Duty Food Grade Polyurethane Material Handling Hose

**General Applications:** In plant transfer of dry materials and powders

**Construction:** Food grade, ether polyurethane tube with steel wire helix.

**Service Temperature Range:** -65°F (-54°C) to +225°F (+107°C)

**Compliances:** FDA, Phthalate Free, ROHS

Part Number	Hose Inner Diameter (in)	Working Pressure (psi) at 68°F	Length (ft)	Weight (lbs/ft)
UREH-CL400X25	4	26	25	0.73
UREH-CL500X25	5	22	25	0.84
UREH-CL600X25	6	20	25	1.20
UREH-CL800X25	8	14	25	1.67
UREH-CL1000X25	10	11	25	2.03
UREH-CL1200X25	12	10	25	2.47

### Tigerflex™ Food Grade Ducting/Light Material Handling Hose

**General Applications:** Ducting, ventilation and fume removal

**Construction:** Food grade, PVC tube with rigid PVC helix and grounding wire.

**Service Temperature Range:** -4°F (-20°C) to +150°F (+65°C)

**Compliances:** 3-A, FDA, Phthalate Free, RoHS, USDA

Part Number	Hose Inner Diameter (in)	Working Pressure (psi) at 68°F	Length (ft)	Weight (lbs/ft)
GTFE150X100	1 1/2	20	100	0.23
GTFE200X100	2	15	100	0.30
GTFE250X100	2 1/2	10	100	0.39
GTFE300X100	3	10	100	0.50
GTFE400X100	4	8	100	0.77
GTFE600X50	6	6	50	1.08
GTFE800X50	8	4	50	1.74



Because we continually examine ways to improve our products, we reserve the right to alter specifications without notice.

# Hose and Fittings for the Food and Beverage Industries

## Facilities Washdown Hoses

### Alfagomma® T350LL/LH Washdown Hose

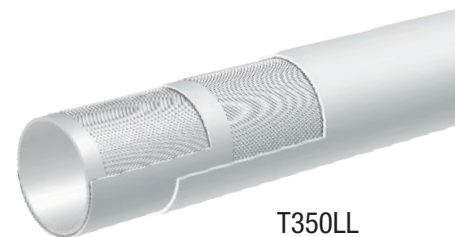
**General Applications:** General washdown service, using hot water or low pressure saturated steam

**Construction:** White EPDM tube, high tensile textile cords and EPDM cover.

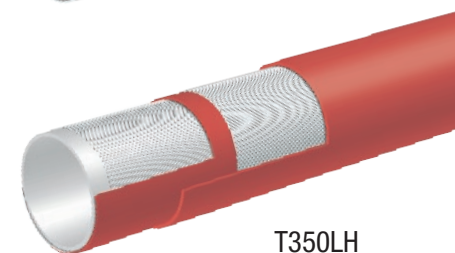
**Service Temperature Range:** Water -40°F (-40°C) to +248°F (+120°C), Steam to +330°F (+165°C)

**Compliances:** 3-A, FDA, Phthalate Free, RoHS

Part Number	Nominal ID		Nominal OD		Working Pressure (psi)		Length (ft)	Weight (lbs/ft)
	(in)	(mm)	(in)	(mm)	Water	Steam		
T350LL050X200	1/2	13	0.91	23	225	90	200	0.27
T350LL062X200	5/8	16	1.02	26	225	90	200	0.31
T350LL075X200	3/4	19	1.22	31	225	90	200	0.44
T350LH075X200	3/4	19	1.22	31	225	90	200	0.44
T350LL100X200	1	25	1.46	37	225	90	200	0.54
T350LH100X200	1	25	1.46	37	225	90	200	0.54
T350LL125X200	1 1/4	32	1.81	46	225	90	200	0.63
T350LL150X200	1 1/2	38	2.05	52	225	90	200	0.74
T350LL200X200	2	51	2.64	67	225	90	200	1.12



T350LL



T350LH



### Alfagomma® T351LL/LG Washdown Hose with Tapered Nozzle

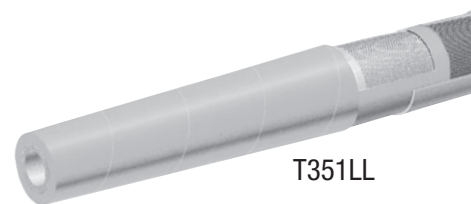
**General Applications:** General washdown service, using hot water or cold water

**Construction:** White EPDM tube, high tensile textile cords and EPDM cover.

**Service Temperature Range:** -40°F (-40°C) to +248°F (+120°C)

**Compliances:** 3-A, FDA, Phthalate Free, RoHS

Part Number	Nominal ID		Nominal OD		Working Pressure (psi) at 70°F	Length (ft)	Weight (lbs/ft)
	(in)	(mm)	(in)	(mm)			
T351LL075X50	3/4	19	1.22	31	150	50	0.44
T351LG075X50	3/4	19	1.22	31	150	50	0.44
T351LL100X50	1	25	1.46	37	150	50	0.54
T351LG100X50	1	25	1.46	37	150	50	0.54
T351LL125X50	1 1/4	32	1.81	46	150	50	0.78
T351LG125X50	1 1/4	32	1.81	46	150	50	0.78
T351LL150X50	1 1/2	38	2.05	52	150	50	0.91
T351LG150X50	1 1/2	38	2.05	52	150	50	0.91



T351LL



T351LG

Because we continually examine ways to improve our products, we reserve the right to alter specifications without notice.



# Hose and Fittings for the Food and Beverage Industries

## Food Grade Bulk Material Handling Hoses (High Abrasion)

### Tigerflex™ Heavy Duty Fabric Reinforced Bulk Material Handling Hose

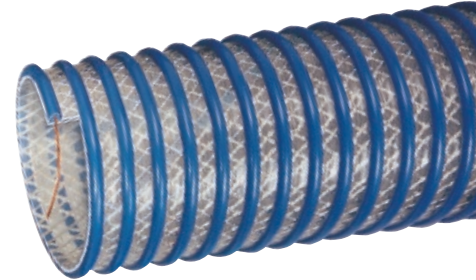
**General Applications:** Bulk truck and railcar unloading, heavy duty material handling

**Construction:** Food grade polyurethane, polyester fabric reinforcement, rigid PVC helix and grounding wire.

**Service Temperature Range:** -40°F (-40°C) to +150°F (+65°C)

**Compliances:** FDA, Phthalate Free, RoHS, USDA

Part Number	Hose Inner Diameter (in)	Working Pressure (psi) at 68°F	Length (ft)	Weight (lbs/ft)
2020-200X100	2	80	100	0.94
2020-300X100	3	70	100	1.20
2020-400X100	4	65	100	1.60
2020-400X20	4	65	20	1.60
2020-500X20	5	45	20	2.45
2020-600X20	6	40	20	2.86
2020-800X20	8	35	20	4.69



### Tigerflex™ Voltbuster™ Heavy Duty Fabric Reinforced Bulk Material Handling Hose

**General Applications:** Bulk truck and railcar unloading, heavy duty material handling

**Construction:** Food grade polyurethane, polyester fabric reinforcement, rigid PVC helix and grounding wire.

**Service Temperature Range:** -40°F (-40°C) to +150°F (+65°C)

**Compliances:** FDA, Phthalate Free, RoHS

Part Number	Hose Inner Diameter (in)	Working Pressure (psi) at 68°F	Length (ft)	Weight (lbs/ft)
VLT-SD200X100	2	75	100	0.77
VLT-SD300X100	3	70	100	1.22
VLT-SD400X100	4	65	100	1.85
VLT-SD400X20	4	65	20	1.85
VLT-SD500X20	5	45	20	2.43
VLT-SD600X20	6	40	20	3.05



Because we continually examine ways to improve our products, we reserve the right to alter specifications without notice.

# Hose and Fittings for the Food and Beverage Industries

## Food Grade Bulk Material Handling Hoses (High Abrasion)

### Alfagomma® T720LG Food Suction & Discharge Hose

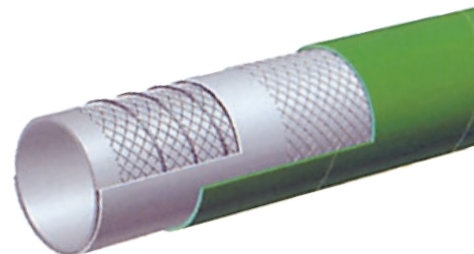
**General Applications:** Transfer of abrasive materials such as grains and flour

**Construction:** 3/16" thick natural rubber tube with static wire, high tensile textile cords, steel helix wire and SBR/EPDM cover.

**Service Temperature Range:** -22°F (-30°C) to +176°F (+80°C)

**Compliances:** FDA, Phthalate Free, RoHS

Part Number	Nominal ID		Nominal OD		Working Pressure (psi) at 70°F	Length (ft)	Weight (lbs/ft)
	(in)	(mm)	(in)	(mm)			
T720LG200X100	2	51	2.64	67	150	100	1.23
T720LG300X100	3	76	3.62	92	150	100	1.91
T720LG400X100/50	4	102	4.65	118	150	100/50	2.63
T720LG500X50/20	5	127	5.71	145	75	50/20	3.81
T720LG600X50/20	6	152	6.69	170	75	50/20	4.72
T720LG800X20	8	203	8.78	223	75	20	7.01



### Alfagomma® T714LG Corrugated Food Suction & Discharge Hose

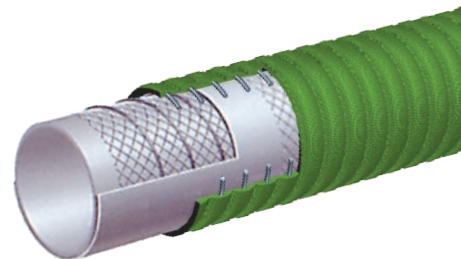
**General Applications:** Transfer of abrasive materials such as grains and flour

**Construction:** 3/16" thick natural rubber tube with static wire, high tensile textile cords, steel wire helix and NR/EPDM cover.

**Service Temperature Range:** -22°F (-30°C) to +176°F (+80°C)

**Compliances:** FDA, Phthalate Free, RoHS

Part Number	Nominal ID		Nominal OD		Working Pressure (psi) at 70°F	Length (ft)	Weight (lbs/ft)
	(in)	(mm)	(in)	(mm)			
T714LG500X50/20	5	127	5.63	143	75	50/20	3.80
T714LG600X50/20	6	152	6.85	174	75	50/20	4.75
T714LG800X20	8	203	8.94	227	75	20	7.01



### Alfagomma® T760LE Food Discharge Hose

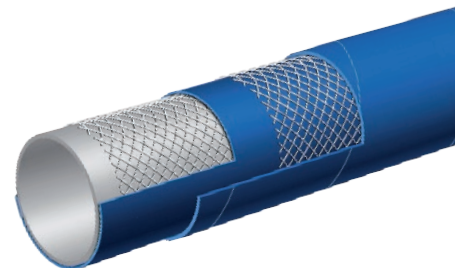
**General Applications:** Discharge or delivery of dry bulk food products

**Construction:** 3/16" thick natural rubber tube with static wire, high tensile textile cords and SBR/EPDM cover.

**Temperature Range:** -22°F (-30°C) to +176°F (+80°C)

**Compliances:** FDA, Phthalate Free, RoHS

Part Number	Nominal ID		Nominal OD		Working Pressure (psi) at 70°F	Length (ft)	Weight (lbs/ft)
	(in)	(mm)	(in)	(mm)			
T760LE400X100	4	102	4.65	118	75	100	2.12



Because we continually examine ways to improve our products, we reserve the right to alter specifications without notice.

# Hose and Fittings for the Food and Beverage Industries

## Food Grade Bulk Material Handling Hoses (High Abrasion)

### Hose Tec® Stainless Steel, Unlined Bulk Material Transfer Hose Assemblies

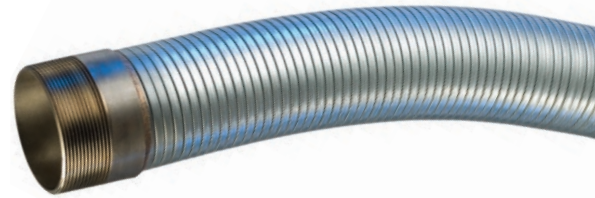
**General Applications:** Bulk truck and railcar unloading, heavy duty material handling

**Construction:** Stainless steel tube with stainless steel ends.

**Maximum Service Temperature:** +1500°F (+815°C)

**Hose Ends:** Male NPT

Part Number	Hose Inner Diameter (in)	Length (ft)	Weight (lbs/ft)
HTS4200-300X10TOE	3	10	2.20
HTS4200-400X10TOE	4	10	2.80
HTS4200-500X10TOE	5	10	3.40
HTS4200-600X10TOE	6	10	4.20



### Hose Tec® Stainless Steel, Lined Bulk Material Transfer Hose Assemblies

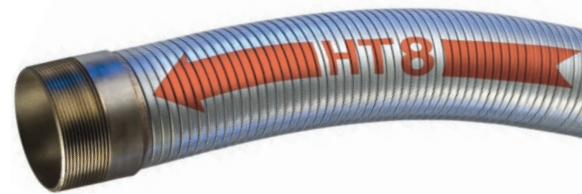
**General Applications:** Bulk truck and railcar unloading, heavy duty material handling

**Construction:** Stainless steel tube with stainless steel ends.

**Maximum Service Temperature:** +1500°F (+815°C)

**Hose Ends:** Male NPT

Part Number	Hose Inner Diameter (in)	Length (ft)	Weight (lbs/ft)
HTSS5180-400X10TOE	4	10	3.80
HTSS5180-400X12TOE	4	12	3.75
HTSS5180-400X15TOE	4	15	3.73
HTSS5180-400X19TOE	4	19	3.68
HTSS5180-500X15TOE	5	15	5.00
HTSS5180-600X10TOE	6	10	6.20



Because we continually examine ways to improve our products, we reserve the right to alter specifications without notice.



# Hose and Fittings for the Food and Beverage Industries

## Sanitary Fittings

### TCS-SS, RHAS-SS, and BHAS-SS

#### Features and Advantages:

- Corrosion resistant 316L stainless steel.
- Smooth 32 Ra food contact finish surface.
- Compliant with 3-A 63-03 and certified to 3-A RPSCQL 62-02
- Uses SPHDS, DPHDS or DBS series clamps. (pg 22)



### Sanitary Crimp Fitting Tri-Clamp x Hose Shank

Size (in)	Part Number
1	TCS-SS100
1 1/2	TCS-SS150
2	TCS-SS200
2 1/2	TCS-SS250
3	TCS-SS300
4	TCS-SS400

### Sanitary Clamp Fitting Tri-Clamp x Short Hose Shank

Fitting End Size (in)	Hose Shank Size (in)	Part Number
1	3/8	RHAS-SS100038
1	1/2	RHAS-SS100050
1	3/4	RHAS-SS100075
1	1	RHAS-SS100
1 1/2	1/2	RHAS-SS150050
1 1/2	3/8	RHAS-SS150062
1 1/2	3/4	RHAS-SS150075
1 1-2	1	RHAS-SS150100
1 1/2	1 1/2	RHAS-SS150
2	1 1/2	RHAS-SS200150
2	2	RHAS-SS200
2 1/2	2 1/2	RHAS-SS250
3	3	RHAS-SS300
4	4	RHAS-SS400



### Sanitary Clamp Fitting Tri-Clamp x Long Hose Shank

Size (in)	Part Number
1	BHAS-SS100
1 1/2	BHAS-SS150
2	BHAS-SS200
3	BHAS-SS300
4	BHAS-SS400



*Kuriyama Sanitary Hose Assemblies are certified to 3A Sanitary Standards.*

Because we continually examine ways to improve our products, we reserve the right to alter specifications without notice.



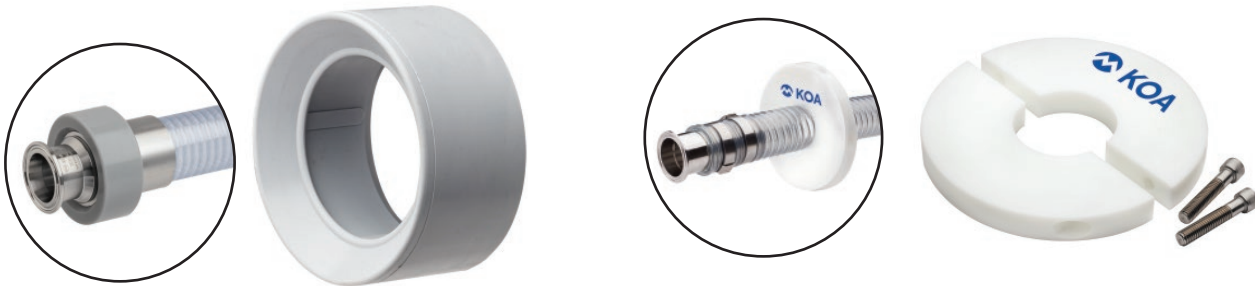
# Hose and Fittings for the Food and Beverage Industries

## Sanitary Fittings



Sanitary Clamps (for Tri-Clamp Fittings)

Size (in)	Single Pin Part Number	Double Pin Part Number	Bolted Part Number
1 & 1 1/2	SPHDS150	DPHDS150	DBS150
2	SPHDS200	DPHDS200	DBS200
2 1/2	SPHDS250	DPHDS250	—
3	SPHDS300	DPHDS300	DBS300
4	SPHDS400	DPHDS400	DBS400



Sanitary Hose Bumpers

Size (in)	Part Number
1 1/2	SHB150
2	SHB200
2 1/2	SHB250
3	SHB300

Sanitary Hose Risers

Hose Shank Size (in)	Fits Hose (in)	Part Number
1 1/2	1.80 - 2.15	SHR150
2	2.10 - 2.35	SHR150200
2 1/2	2.65 - 2.90	SHR250
3	3.30 - 3.75	SHR200300
4	4.55 - 5.31	SHR400



Sanitary Tri-clamp End Cap

Fitting End Size (in)	Cap End Size (in)	Part Number
1 & 1 1/2	1 1/2	TCSC-SS100150
2	2	TCSC-SS200
2 1/2	2 1/2	TCSC-SS250
3	3	TCSC-SS300
4	4	TCSC-SS400

- Corrosion resistant 316L stainless steel.
- Smooth 32 Ra food contact finish surface.
- Certified to 3-A 63-03

Because we continually examine ways to improve our products, we reserve the right to alter specifications without notice.

# Hose and Fittings for the Food and Beverage Industries

## Sanitary Fittings



**Sanitary SS316 Bevel Seat x Hose Shank**

Size (in)	Part Number
1	FBS-SS100
1 1/2	FBS-SS150
2	FBS-SS200
2 1/2	FBS-SS250
3	FBS-SS300
4	FBS-SS400



**Sanitary Hex Nut (for FBS-SS Series)**

Size (in)	Part Number
1	HNS100
1 1/2	HNS150
2	HNS200
2 1/2	HNS250
3	HNS300
4	HNS400



**Single Side Hex Wrench  
(for use with HNS hex nut)**

Hose Shank Size (in)	Part Number
1	SSHW100
1 1/2	SSHW150
2	SSHW200
2 1/2	SSHW250
3	SSHW300
4	SSHW400



**Double Side Hex Wrench  
(for use with HNS hex nut)**

Hose Shank Size (in)	Part Number
1 x 1 1/2	TSHW100150
2 x 3	TSHW200300



**Sanitary SS316 Female I-Line x Hose Shank**

Hose Shank Size (in)	Part Number
1 1/2	FILS-SS150
2	FILS-SS200
3	FILS-SS300
4	FILS-SS400



**Sanitary I-line Clamps (for FILS-SS Series)**

Hose Shank Size (in)	Part Number
1 1/2	SPILC150
2	SPILC200
3	SPILC300
4	SPILC400

Because we continually examine ways to improve our products, we reserve the right to alter specifications without notice.



# Hose and Fittings for the Food and Beverage Industries

## Sanitary Gaskets

### Sanitary Buna-N Tri-Clamp Gasket Black

**Color Code:** ● (1 Red Dot)

**Certification:** 3A 18-03 sanitary standard

**Temperature Range:** -65°F (-54°C) to +210°F (+99°C)

Part Number	Size (in)	Weight Each (lbs)	Standard Carton
BUNA-40MPU100	1	0.012	25
BUNA-40MPU150	1 1/2	0.013	25
BUNA-40MPU200	2	0.014	25
BUNA-40MPU250	2 1/2	0.018	25
BUNA-40MPU300	3	0.020	25
BUNA-40MPU400	4	0.030	25



### Sanitary Buna-N Tri-Clamp Gasket White

**Color Code:** ● (1 Red Dot)

**Certification:** 3A 18-03 sanitary standard

**Temperature Range:** -65°F (-54°C) to +210°F (+99°C)

Part Number	Size (in)	Weight Each (lbs)	Standard Carton
BUNA-40MPUW100	1	0.012	25
BUNA-40MPUW150	1 1/2	0.013	25
BUNA-40MPUW200	2	0.014	25
BUNA-40MPUW250	2 1/2	0.018	25
BUNA-40MPUW300	3	0.022	25
BUNA-40MPUW400	4	0.034	25



### Sanitary EPDM Tri-Clamp Gasket Black

**Color Code:** ● ● ● (3 Green Dots)

**Certification:** 3A 18-03 sanitary standard

**Temperature Range:** -60°F (-51°C) to +300°F (+149°C)

Part Number	Size (in)	Weight Each (lbs)	Standard Carton
EPDM-40MPE100	1	0.012	25
EPDM-40MPE150	1 1/2	0.013	25
EPDM-40MPE200	2	0.014	25
EPDM-40MPE250	2 1/2	0.016	25
EPDM-40MPE300	3	0.020	25
EPDM-40MPE400	4	0.030	25



### Sanitary FKM Tri-Clamp Gasket Black

**Color Code:** ○ ● (1 White/1 Yellow Dot)

**Certification:** 3A 18-03 sanitary standards

**Temperature Range:** -20°F (-29°C) to +350°F (+177°C)

Part Number	Size (in)	Weight Each (lbs)	Standard Carton
FKM-40MPSFY100	1	0.013	25
FKM-40MPSFY150	1 1/2	0.014	25
FKM-40MPSFY200	2	0.018	25
FKM-40MPSFY300	3	0.030	25
FKM-40MPSFY400	4	0.046	25



Because we continually examine ways to improve our products, we reserve the right to alter specifications without notice.

# Hose and Fittings for the Food and Beverage Industries

## Sanitary Gaskets

### Sanitary Buna-N Bevel Seat Gasket Black

**Color Code:** ● (1 Red Dot)

**Certification:** 3A 18-03 sanitary standard

**Temperature Range:** -65°F (-54°C) to +210°F (+99°C)

Part Number	Size (in)	Weight Each (lbs)	Standard Carton
BUNA-40BS0100	1	0.008	25
BUNA-40BS0150	1 1/2	0.014	25
BUNA-40BS0200	2	0.018	25
BUNA-40BS0250	2 1/2	0.018	25
BUNA-40BS0300	3	0.034	25
BUNA-40BS0400	4	0.038	25



### Sanitary EPDM Bevel Seat Gasket Black

**Color Code:** ● ● ● (3 Green Dots)

**Certification:** 3A 18-03 sanitary standard

**Temperature Range:** -60°F (-51°C) to +300°F (+149°C)

Part Number	Size (in)	Weight Each (lbs)	Standard Carton
EPDM-40BSE100	1	0.008	25
EPDM-40BSE150	1 1/2	0.014	25
EPDM-40BSE200	2	0.018	25
EPDM-40BSE250	2 1/2	0.026	25
EPDM-40BSE300	3	0.034	25
EPDM-40BSE400	4	0.038	25



### Sanitary Buna-N I-Line Gasket Black

**Color Code:** ● (1 Red Dot)

**Certification:** 3A 18-03 sanitary standard

**Temperature Range:** -65°F (-54°C) to +210°F (+99°C)

Part Number	Size (in)	Weight Each (lbs)	Standard Carton
BUNA-40IH150	1 1/2	0.006	25
BUNA-40IH200	2	0.007	25
BUNA-40IH300	3	0.012	25
BUNA-40IH400	4	0.016	25



### Sanitary EPDM I-Line Gasket Black

**Color Code:** ● ● ● (3 Green Dots)

**Certification:** 3A 18-03 sanitary standard

**Temperature Range:** -60°F (-51°C) to +300°F (+149°C)

Part Number	Size (in)	Weight Each (lbs)	Standard Carton
EPDM-40IE150	1 1/2	0.006	25
EPDM-40IE200	2	0.008	25
EPDM-40IE300	3	0.014	25
EPDM-40IE400	4	0.018	25



Because we continually examine ways to improve our products, we reserve the right to alter specifications without notice.

# Hose and Fittings for the Food and Beverage Industries

## Industrial Couplings



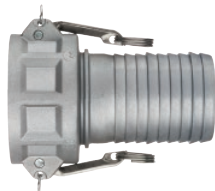
### Part A Male Adapter x Female NPT

Size (in)	Aluminum	Stainless Steel	Brass
	Part Number	Part Number	Part Number
2	AL-A200	SS-A200	BR-A200
3	AL-A300	SS-A300	BR-A300
4	AL-A400	SS-A400	BR-A400
6	AL-A600	SS-A600	BR-A600
8	AL-A800	-	-



### Part B Female Coupler x Male NPT

Size (in)	Aluminum	Stainless Steel	Brass
	Part Number	Part Number	Part Number
2	AL-B200	SS-B200	BR-B200
3	AL-B300	SS-B300	BR-B300
4	AL-B400	SS-B400	BR-B400
6	AL-B600	SS-B600	BR-B600
8	AL-B800	-	-



### Part C Female Coupler x Hose Shank

Size (in)	Aluminum	Stainless Steel	Brass
	Part Number	Part Number	Part Number
2	AL-C200	SS-C200	BR-C200
3	AL-C300	SS-C300	BR-C300
4	AL-C400	SS-C400	BR-C400
6	AL-C600	SS-C600	BR-C600
8	AL-C800	-	-

Because we continually examine ways to improve our products, we reserve the right to alter specifications without notice.



# Hose and Fittings for the Food and Beverage Industries

## Industrial Couplings



**Part D Female Coupler x Female NPT**

Size (in)	Aluminum	Stainless Steel	Brass
	Part Number	Part Number	Part Number
2	AL-D200	SS-D200	BR-D200
3	AL-D300	SS-D300	BR-D300
4	AL-D400	SS-D400	BR-D400
6	AL-D600	SS-D600	BR-D600
8	AL-D800	-	-



**Part E Male Adapter x Hose Shank**

Size (in)	Aluminum	Stainless Steel	Brass
	Part Number	Part Number	Part Number
2	AL-E200	SS-E200	BR-E200
3	AL-E300	SS-E300	BR-E300
4	AL-E400	SS-E400	BR-E400
6	AL-E600	SS-E600	BR-E600
8	AL-E800	-	-



**Part F Male Adapter x Male NPT**

Size (in)	Aluminum	Stainless Steel	Brass
	Part Number	Part Number	Part Number
2	AL-F200	SS-F200	BR-F200
3	AL-F300	SS-F300	BR-F300
4	AL-F400	SS-F400	BR-F400
6	AL-F600	SS-F600	BR-F600
8	AL-F800	-	-

Because we continually examine ways to improve our products, we reserve the right to alter specifications without notice.

# Hose and Fittings for the Food and Beverage Industries

## Sanitary Ferrules

### SCF-SS Series

#### Sanitary 304 Stainless Steel Crimp Ferrules

- Smooth 64RA surface finish
- Designed for use with TCS-SS, FBS-SS, FILS-SS and TES-SS series fittings



Part Number	Hose ID (in)	Ferrule ID (in)	Wall Thickness (in)	Length (in)	Weight Each (lbs)	Standard Carton
SCF-SS10146	1	1.46	0.108	2.28	0.29	126
SCF-SS10153	1	1.53	0.108	2.28	0.31	144
SCF-SS10157	1	1.57	0.108	2.28	0.33	144
SCF-SS10161	1	1.61	0.108	2.28	0.35	144
SCF-SS10165	1	1.65	0.108	2.28	0.36	144
SCF-SS10173	1	1.73	0.108	2.28	0.37	96
SCF-SS15201	1 1/2	2.01	0.118	2.36	0.46	105
SCF-SS15206	1 1/2	2.06	0.118	2.36	0.49	90
SCF-SS15210	1 1/2	2.10	0.118	2.36	0.49	90
SCF-SS15215	1 1/2	2.15	0.118	2.36	0.51	72
SCF-SS15220	1 1/2	2.20	0.118	2.36	0.53	72
SCF-SS15228	1 1/2	2.28	0.118	2.36	0.55	72
SCF-SS15236	1 1/2	2.36	0.118	2.36	0.60	72
SCF-SS20248	2	2.48	0.128	2.80	0.68	60
SCF-SS20256	2	2.56	0.128	2.80	0.68	60
SCF-SS20264	2	2.64	0.128	2.80	0.73	60
SCF-SS20268	2	2.68	0.128	2.80	0.75	60
SCF-SS20273	2	2.73	0.128	2.80	0.77	45
SCF-SS20279	2	2.79	0.128	2.80	0.80	45
SCF-SS20287	2	2.87	0.128	2.80	0.84	45
SCF-SS20295	2	2.95	0.128	2.80	0.88	36
SCF-SS25300	2 1/2	3.00	0.138	3.25	0.95	12
SCF-SS25307	2 1/2	3.07	0.138	3.25	0.98	12
SCF-SS25315	2 1/2	3.15	0.138	3.25	1.02	12
SCF-SS25323	2 1/2	3.23	0.138	3.25	1.06	12
SCF-SS25331	2 1/2	3.31	0.138	3.25	1.10	12
SCF-SS25339	2 1/2	3.39	0.138	3.25	1.14	12
SCF-SS25346	2 1/2	3.46	0.138	3.25	1.18	12
SCF-SS30354	3	3.54	0.138	3.94	1.23	24
SCF-SS30360	3	3.60	0.138	3.94	1.30	24
SCF-SS30368	3	3.68	0.138	3.94	1.43	12
SCF-SS30374	3	3.74	0.138	3.94	1.54	12
SCF-SS30382	3	3.82	0.138	3.94	1.70	12
SCF-SS30390	3	3.90	0.138	3.94	1.81	12
SCF-SS30398	3	3.98	0.138	3.94	1.96	12
SCF-SS30409	3	4.09	0.138	3.94	2.07	12
SCF-SS40457	4	4.57	0.158	4.19	2.20	12
SCF-SS40465	4	4.65	0.158	4.19	2.36	12
SCF-SS40472	4	4.72	1.580	4.19	2.51	12
SCF-SS40480	4	4.80	0.158	4.19	2.71	12
SCF-SS40488	4	4.88	0.158	4.19	2.91	12
SCF-SS40496	4	4.96	0.158	4.19	3.09	8
SCF-SS40508	4	5.08	0.158	4.19	3.26	8
SCF-SS40520	4	5.20	0.158	4.19	3.46	8
SCF-SS40531	4	5.31	0.158	4.19	3.64	8

Because we continually examine ways to improve our products, we reserve the right to alter specifications without notice.

# Hose and Fittings for the Food and Beverage Industries

## KuriKrimp™ Ferrules

### CRF-SS Series

#### Kuri-Crimp™ 304 Stainless Steel Crimp Ferrules

- Designed for use with TCS-SS, FBS-SS, FILS-SS and TES-SS series fittings



Part Number	Hose ID (in)	Ferrule ID (in)	Wall Thickness (in)	Length (in)	Weight Each (lbs)	Standard Carton
CRF-SS10108	1	1.50	0.059	2.29	0.20	200
CRF-SS10109	1	1.56	0.059	2.29	0.21	200
CRF-SS10110	1	1.63	0.059	2.29	0.21	200
CRF-SS10111	1	1.69	0.059	2.29	0.23	200
CRF-SS10112	1	1.75	0.059	2.29	0.23	200
CRF-SS10113	1	1.81	0.059	2.29	0.24	200
CRF-SS15200	1 1/2	2.00	0.059	2.36	0.27	128
CRF-SS15202	1 1/2	2.12	0.059	2.36	0.29	128
CRF-SS15204	1 1/2	2.25	0.059	2.36	0.29	80
CRF-SS15206	1 1/2	2.39	0.059	2.36	0.30	80
CRF-SS15208	1 1/2	2.50	0.059	2.36	0.35	80
CRF-SS20209	2	2.56	0.059	2.79	0.40	80
CRF-SS20210	2	2.62	0.059	2.79	0.43	80
CRF-SS20211	2	2.68	0.059	2.79	0.43	80
CRF-SS20213	2	2.81	0.059	2.79	0.44	80
CRF-SS20215	2	2.94	0.059	2.79	0.46	80
CRF-SS25302	2 1/2	3.12	0.059	3.11	0.56	60
CRF-SS25304	2 1/2	3.25	0.059	3.11	0.58	60
CRF-SS25306	2 1/2	3.39	0.059	3.11	0.60	60
CRF-SS25308	2 1/2	3.50	0.059	3.11	0.62	60
CRF-SS30309	3	3.56	0.098	3.94	1.27	40
CRF-SS30310	3	3.62	0.098	3.94	1.29	40
CRF-SS30312	3	3.75	0.098	3.94	1.31	40
CRF-SS30313	3	3.81	0.098	3.94	1.33	40
CRF-SS30315	3	3.94	0.098	3.94	1.36	40
CRF-SS30400	3	4.00	0.098	3.94	1.40	40
CRF-SS40409	4	4.56	0.098	4.19	1.57	30
CRF-SS40410	4	4.63	0.098	4.19	1.59	30
CRF-SS40411	4	4.68	0.098	4.19	1.74	30
CRF-SS40412	4	4.75	0.098	4.19	1.76	30
CRF-SS40413	4	4.81	0.098	4.19	1.78	30
CRF-SS40414	4	4.88	0.098	4.19	1.82	30
CRF-SS40500	4	5.00	0.098	4.19	1.86	30
CRF-SS40501	4	5.06	0.098	4.19	1.89	30

Because we continually examine ways to improve our products, we reserve the right to alter specifications without notice.





# Hose and Fittings for the Food and Beverage Industries

## Hose Clamps



**Zinc Plated Carbon Steel Spiral Double Bolt Clamp (For Counterclockwise Spiral Hoses)  
Designed for Corrugated Tigerflex™ Hoses**

**Stainless Steel 304 Spiral Double Bolt Clamp (For Counterclockwise Spiral Hoses)  
Designed for Corrugated Tigerflex™ Hoses**

Part Number	Size (in)	Torque (ft lbs)	Weight Each (lbs)	Standard Carton
SDBC-1.5	1 1/2	6	0.18	100
SDBC-2	2	6	0.36	100
SDBC-2.25	2 1/4	6	0.40	100
SDBC-2.5	2 1/2	8	0.48	100
SDBC-3	3	8	0.66	70
SDBC-3.5	3 1/2	8	0.70	70
SDBC-4	4	24	1.02	40
SDBC-5	5	24	1.76	30
SDBC-6	6	30	2.00	20
SDBC-8	8	30	2.76	10
SDBC-10	10	30	3.46	10
SDBC-12	12	30	4.14	10

Part Number	Size (in)	Torque (ft lbs)	Weight Each (lbs)	Standard Carton
SDBC-SS-1.5	1 1/2	6	0.20	100
SDBC-SS-2	2	6	0.40	100
SDBC-SS-2.5	2 1/2	6	0.53	70
SDBC-SS-3	3	8	0.73	70
SDBC-SS-3.5	3 1/2	8	0.77	40
SDBC-SS-4	4	24	1.12	40
SDBC-SS-5	5	24	1.94	30
SDBC-SS-6	6	30	2.20	20
SDBC-SS-8	8	30	3.04	10
SDBC-SS-10	10	30	3.81	10
SDBC-SS-12	12	30	4.55	10



**Bridge Clamp for Tigerflex™ Ducting Hoses  
300 Stainless Worm Gear Band  
(Designed For Counterclockwise Spiral Hoses)**

**Bridge Clamp for Flexair™ Ducting Hoses  
300 Stainless Worm Gear Band  
(Designed For Clockwise Spiral Hoses)**

Part Number	Size (in)	Size Range (in)	Weight Each (lbs)	Standard Carton
DCLPL250	2 1/2	2 3/8 - 2 3/4	0.086	200
DCLPL300	3	2 7/8 - 3 3/8	0.093	200
DCLPL400	4	3 1/2 - 4 1/2	0.130	200
DCLPL500	5	4 3/8 - 5 1/4	0.143	200
DCLPL600	6	5 1/4 - 6 1/4	0.167	200
DCLPL700	7	6 1/4 - 7 1/4	0.175	200
DCLPL800	8	7 3/8 - 8 3/8	0.207	100
DCLPL1000	10	9 1/4 - 10 1/4	0.242	100
DCLPL1200	12	11 1/4 - 12 1/4	0.284	100

Part Number	Size (in)	Size Range (in)	Weight Each (lbs)	Standard Carton
DCLPR250	2 1/2	2 3/8 - 2 3/4	0.086	200
DCLPR300	3	2 7/8 - 3 3/8	0.093	200
DCLPR400	4	3 1/2 - 4 1/2	0.130	200
DCLPR500	5	3 1/2 - 4 1/2	0.143	200
DCLPR600	6	4 1/4 - 5 1/4	0.167	200
DCLPR700	7	5 1/4 - 6 1/4	0.175	200
DCLPR800	8	7 3/8 - 8 3/8	0.207	100
DCLPR1000	10	9 1/4 - 10 1/4	0.242	100
DCLPR1200	12	11 1/4 - 12 1/4	0.284	100

Because we continually examine ways to improve our products, we reserve the right to alter specifications without notice.

# Hose and Fittings for the Food and Beverage Industries

## Hose Clamps

### Kuri-Clamp™ Standard Duty Worm Gear Clamp

Stainless Steel Band & Housing with Carbon Steel Screw



Part Number	Size Range (in)	Pieces Per Box	Band Width (in)	Torque Rating (in/lbs)	Weight Per Box (lbs)
WGC-CS06	7/16 - 25/32	10	1/2	25-37	0.60
WGC-CS08	1/2 - 29/32	10	1/2	25-37	0.60
WGC-CS10	9/16 - 1 1/16	10	1/2	25-37	0.60
WGC-CS12	11/16 - 1 1/4	10	1/2	25-37	0.60
WGC-CS16	13/16 - 1 1/2	10	1/2	25-37	0.70
WGC-CS20	13/16 - 1 3/4	10	1/2	25-37	0.70
WGC-CS24	1 1/16 - 2	10	1/2	25-37	0.80
WGC-CS28	1 5/16 - 2 1/4	10	1/2	25-37	0.80
WGC-CS32	1 9/16 - 2 1/2	10	1/2	25-37	0.80
WGC-CS36	1 13/16 - 2 3/4	10	1/2	25-37	0.90
WGC-CS40	2 1/16 - 3	10	1/2	25-37	0.90
WGC-CS44	2 5/16 - 3 1/4	10	1/2	25-37	0.90
WGC-CS48	2 9/16 - 3 1/2	10	1/2	25-37	1.00
WGC-CS52	2 13/16 - 3 3/4	10	1/2	25-37	1.10
WGC-CS56	3 1/16 - 4	10	1/2	25-37	1.10
WGC-CS60	3 5/16 - 4 1/4	10	1/2	25-37	1.20
WGC-CS64	3 9/16 - 4 1/2	10	1/2	25-37	1.20
WGC-CS72	1 7/8 - 5	10	1/2	25-37	1.30
WGC-CS80	2 1/2 - 5 1/2	10	1/2	25-37	1.40
WGC-CS88	3 1/8 - 6	10	1/2	25-37	1.40
WGC-CS96	3 5/8 - 6 1/2	10	1/2	25-37	1.50
WGC-CS104	4 1/8 - 7	10	1/2	25-37	1.50

\* CLAMPS ONLY SOLD IN BOX QUANTITIES

### Kuri-Clamp™ Standard Duty Worm Gear Clamp

Stainless Steel Band, Housing, & Screw



Part Number	Size Range (in)	Pieces Per Box	Band Width (in)	Torque Rating (in/lbs)	Weight Per Box (lbs)
WGC-SS06	7/16 - 25/32	10	1/2	30-45	0.60
WGC-SS08	1/2 - 29/32	10	1/2	30-45	0.60
WGC-SS10	9/16 - 1 1/16	10	1/2	30-45	0.60
WGC-SS12	11/16 - 1 1/4	10	1/2	30-45	0.60
WGC-SS16	13/16 - 1 1/2	10	1/2	30-45	0.70
WGC-SS20	13/16 - 1 3/4	10	1/2	30-45	0.70
WGC-SS24	1 1/16 - 2	10	1/2	30-45	0.80
WGC-SS28	1 5/16 - 2 1/4	10	1/2	30-45	0.80
WGC-SS32	1 9/16 - 2 1/2	10	1/2	30-45	0.80
WGC-SS36	1 13/16 - 2 3/4	10	1/2	30-45	0.90
WGC-SS40	2 1/16 - 3	10	1/2	30-45	0.90
WGC-SS44	2 5/16 - 3 1/4	10	1/2	30-45	0.90
WGC-SS48	2 9/16 - 3 1/2	10	1/2	30-45	1.00
WGC-SS52	2 13/16 - 3 3/4	10	1/2	30-45	1.10
WGC-SS56	3 1/16 - 4	10	1/2	30-45	1.10
WGC-SS60	3 5/16 - 4 1/4	10	1/2	30-45	1.20
WGC-SS64	3 9/16 - 4 1/2	10	1/2	30-45	1.20
WGC-SS72	1 7/8 - 5	10	1/2	30-45	1.30
WGC-SS80	2 1/2 - 5 1/2	10	1/2	30-45	1.40
WGC-SS88	3 1/8 - 6	10	1/2	30-45	1.40
WGC-SS96	3 5/8 - 6 1/2	10	1/2	30-45	1.50
WGC-SS104	4 1/8 - 7	10	1/2	30-45	1.50

\* CLAMPS ONLY SOLD IN BOX QUANTITIES

### Kuri-Clamp™ Mini Worm Gear Clamp

Stainless Steel Band & Housing with Carbon Steel Screw



Part Number	Size Range (in)	Pieces Per Box	Band Width (in)	Torque Rating (in/lbs)	Weight Per Box (lbs)
WGC-MCS04	7/32 - 5/8	10	5/16	10-15	0.20
WGC-MCS06	7/16 - 25/32	10	5/16	10-15	0.20
WGC-MCS08	1/2 - 29/32	10	5/16	10-15	0.20
WGC-MCS10	9/16 - 1 1/16	10	5/16	10-15	0.20
WGC-MCS12	11/16 - 1 1/4	10	5/16	10-15	0.30

\* CLAMPS ONLY SOLD IN BOX QUANTITIES

### Kuri-Clamp™ Mini Worm Gear Clamp

Stainless Steel Band, Housing, & Screw



Part Number	Size Range (in)	Pieces Per Box	Band Width (in)	Torque Rating (in/lbs)	Weight Per Box (lbs)
WGC-MSS04	7/32 - 5/8	10	5/16	10-15	0.20
WGC-MSS06	7/16 - 25/32	10	5/16	10-15	0.20
WGC-MSS08	1/2 - 29/32	10	5/16	10-15	0.20
WGC-MSS10	9/16 - 1 1/16	10	5/16	10-15	0.20
WGC-MSS12	11/16 - 1 1/4	10	5/16	10-15	0.30

\* CLAMPS ONLY SOLD IN BOX QUANTITIES

Because we continually examine ways to improve our products, we reserve the right to alter specifications without notice.

# Hose and Fittings for the Food and Beverage Industries

## Hose Clamps



### Galvanized Carbon Steel Center Punch Clamp

Part Number	Size (in)	Pieces Per Box	Band Width (in)	Weight Per Box (lbs)	Standard Box
CPCS03	13/16	100	3/8	3.60	1
CPCS31	1 3/8	100	3/8	4.60	1
CPCS04	1	100	5/8	8.30	1
CPCS05	1 1/4	100	5/8	8.70	1
CPCS06	1 1/2	100	5/8	9.70	1
CPCS07	1 3/4	100	5/8	10.60	1
CPCS08	2	100	5/8	11.50	1
CPCS09	2 1/4	100	5/8	12.60	1
CPCS10	2 1/2	50	5/8	6.80	1
CPCS11	2 3/4	50	5/8	7.30	1
CPCS12	3	50	5/8	7.70	1
CPCS14	3 1/2	50	5/8	8.70	1
CPCS16	4	25	5/8	4.90	1
CPCS18	4 1/2	25	5/8	5.50	1
CPCS20	5	25	5/8	5.90	1
CPCS24	6	25	5/8	6.80	1
CPCS26	6 1/2	25	5/8	7.10	1
CPCS28	7	25	5/8	7.40	1
CPCS32	8	25	5/8	8.20	1

\*CLAMPS ARE SOLD IN BOX QUANTITIES ONLY.

### 201 Stainless Steel Center Punch Clamp

Part Number	Size (in)	Pieces Per Box	Band Width (in)	Weight Per Box (lbs)	Standard Box
CPSS03	13/16	100	3/8	3.60	1
CPSS31	1 3/8	100	3/8	4.60	1
CPSS04	1	100	5/8	8.30	1
CPSS05	1 1/4	100	5/8	8.70	1
CPSS06	1 1/2	100	5/8	9.70	1
CPSS07	1 3/4	100	5/8	10.60	1
CPSS08	2	100	5/8	11.50	1
CPSS09	2 1/4	100	5/8	12.60	1
CPSS10	2 1/2	50	5/8	6.80	1
CPSS11	2 3/4	50	5/8	7.30	1
CPSS12	3	50	5/8	7.70	1
CPSS14	3 1/2	50	5/8	8.70	1
CPSS16	4	25	5/8	4.90	1
CPSS18	4 1/2	25	5/8	5.50	1
CPSS20	5	25	5/8	5.90	1
CPSS24	6	25	5/8	6.80	1
CPSS26	6 1/2	25	5/8	7.10	1
CPSS28	7	25	5/8	7.40	1
CPSS32	8	25	5/8	8.20	1

\*CLAMPS ARE SOLD IN BOX QUANTITIES ONLY.

Because we continually examine ways to improve our products, we reserve the right to alter specifications without notice.



# Hose and Fittings for the Food and Beverage Industries

## Sheet Rubber

### General Properties of Nitrile<sup>†</sup>

- Excellent resistance to petroleum-based fluids.
- Good physical properties.

<sup>†</sup> Properties shown based on Rubber Manufacturers Association Sheet Rubber Handbook, second edition.



### SPECIFICATIONS:

Food grade white nitrile sheet, made from FDA-approved materials (Title 21 Food and Drug S 177.26000)

**Style W60:** 60 Duro hardness (Shore Durometer A)

**Common Name:** Nitrile, Buna-N

**Polymer:** Nitrile-Butadiene

**ISO/ASTM Designation:** NBR

Style	ASTM Specification (SI units)	Temp. Range	Durometer	Tensile Strength (psi)	Elongation (%)	Finish
W60	D 2000 M1BG 610	-31°F to +230°F	55 – 65	1450	300%	Plate

### ORDERING INFORMATION:

Part Number	Gauge x Width (in)	Avg. Length (Linear Ft/Roll)	Approx. Lbs/Roll
W60-02x36x50	1/16 x 36	50	69
W60-02x36x67	1/16 x 36	67	92
W60-03x36x67	3/32 x 36	67	137
W60-04x36x36	1/8 x 36	36	98
W60-04x36x50	1/8 x 36	50	136
W60-06x36x18	3/16 x 36	18	74
W60-06x36x50	3/16 x 36	50	205
W60-08x36x18	1/4 x 36	18	98
W60-08x36x50	1/4 x 36	50	272
W60-02x48x36	1/16 x 48	36	66
W60-02x48x50	1/16 x 48	50	92
W60-04x48x36	1/8 x 48	36	131
W60-04x48x50	1/8 x 48	50	182
W60-06x48x18	3/16 x 48	18	98
W60-06x48x50	3/16 x 48	50	270
W60-08x48x18	1/4 x 48	18	131
W60-08x48x50	1/4 x 48	50	363

Because we continually examine ways to improve our products, we reserve the right to alter specifications without notice.

# Hose and Fittings for the Food and Beverage Industries

## Sheet Rubber

### FDA SILICONE SHEET

#### General Properties of Silicone†

- Very good resistance to ozone, UV light and aging.
- Good physical properties.

† Properties shown based on Rubber Manufacturers Association Sheet Rubber Handbook, second edition.

#### SPECIFICATIONS:

Food grade red silicone sheet: In compliance with FDA 21 CFR Part 177

Style SILFG: 60 Duro hardness (Shore Durometer A)

Common Name: Silicone

Polymer: Polydimethylsiloxane

ISO/ASTM Designation: FE

Style	ASTM Specification (SI units)	Temp. Range	Durometer	Tensile Strength (psi)	Elongation (%)	Finish
SILFG	D 2000 M4FC608 B37 E016 G11 EC 1935/2004	-76°F to +446°F	55 – 65	1450	500%	Plate

#### ORDERING INFORMATION:

Part Number	Gauge x Width (in)	Avg. Length (Linear Ft/Roll)	Approx. Lbs/Roll
SILFG-01x36x35	1/32 x 36	35	22
SILFG-02x36x35	1/16 x 36	35	44
SILFG-03x36x35	3/32 x 36	35	67
SILFG-04x36x35	1/8 x 36	35	89
SILFG-06x36x35	3/16 x 36	35	133
SILFG-08x36x35	1/4 x 36	35	178
SILFG-01x48x35	1/32 x 48	35	30
SILFG-02x48x35	1/16 x 48	35	59
SILFG-03x48x35	3/32 x 48	35	89
SILFG-04x48x35	1/8 x 48	35	118
SILFG-06x48x35	3/16 x 48	35	178
SILFG-08x48x35	1/4 x 48	35	237

Because we continually examine ways to improve our products, we reserve the right to alter specifications without notice.





# Cautionary Statement

All Products sold and distributed by Kuriyama of America, Inc. are in the nature of commodities and they are sold by published specifications and not for particular purposes, uses or applications. Purchaser shall first determine their suitability for the intended purposes, uses or applications and shall either conduct its own engineering studies or tests, or retain qualified engineers, consultants or testing laboratories and consult with them before determining the proper use, suitability or propriety of the merchandise or Products for the intended purposes, uses or applications.

Kuriyama of America, Inc. (Seller) does not recommend the Products for any particular purpose, use or application, and the Purchaser or user thereof shall assume full responsibility for the suitability, propriety, use and application of the Products. Purchaser shall follow all instructions contained in Seller's catalogs, brochures, technical bulletins and other documents regarding the Products. The Products, including but not limited to, hose, tubing or couplings, may fail due to the use or conveyance of substances at elevated or lowered temperatures or at excessive pressure, the conveyance of abrasive, injurious, flammable, explosive or damaging substances.

Hose or tubing used in bent configurations will be subjected to increased abrasion. Hose clamps or couplings may loosen after initial installation and all sections of hose and tubing including connections, couplings, clamps, conductivity and bonding should be inspected frequently, regularly and consistently, and should be replaced, adjusted or re-tightened for the avoidance of leakage, for the prevention of injuries or damages, and for general safety purposes. Except as indicated in its Limited Warranty, Seller shall not be liable or responsible for direct or indirect injuries or damages caused by or attributed to the failure or malfunction of any Products sold or distributed by it.

Purchasers or users of the Products should frequently and consistently undertake inspections and protective measures with respect to the use and application of Products, which should include the examination of tube and cover, conditions of the hose or tubing, and the identification, repair or replacement of sections showing cracking, blistering, separations, internal and external abrasions, leaking or slipped couplings or connections and make proper proof tests.

## Limited Warranty

The Products sold or distributed by Seller are warranted to its customers to be free from defects in material and workmanship at the time of shipment by us, subject to the following provisions. ALL WARRANTY CLAIMS SHALL BE MADE WITHIN SIX (6) MONTHS AFTER SELLER SHIPPED THE PRODUCTS. SELLER'S LIABILITY HEREUNDER IS LIMITED AT SELLER'S EXCLUSIVE DISCRETION, TO 1) THE PURCHASE PRICE OF ANY PRODUCTS PROVING DEFECTIVE; 2) REPAIR OF ANY DEFECTIVE PRODUCT OR PART THEREOF; OR 3) REPLACEMENT OF ANY DEFECTIVE PRODUCT OR PART UPON ITS AUTHORIZED RETURN TO SELLER.

THIS WARRANTY IS IN LIEU OF AND EXCLUDES ALL OTHER WARRANTIES, EXPRESSED, IMPLIED, STATUTORY, OR OTHERWISE CREATED UNDER APPLICABLE LAW INCLUDING, BUT NOT LIMITED TO, THE WARRANTY OF MERCHANTABILITY AND THE WARRANTY OF FITNESS FOR A PARTICULAR PURPOSE. IN NO EVENT SHALL SELLER OR THE MANUFACTURER OF THE PRODUCT BE LIABLE FOR SPECIAL, INCIDENTAL, OR CONSEQUENTIAL DAMAGES, INCLUDING LOSS OF PROFITS, WHETHER OR NOT CAUSED BY OR RESULTING FROM THE NEGLIGENCE OF SELLER AND/OR THE MANUFACTURER OF THE PRODUCT, UNLESS SPECIFICALLY PROVIDED HEREIN. IN ADDITION, THIS WARRANTY SHALL NOT APPLY TO ANY PRODUCTS OR PORTIONS THEREOF WHICH HAVE BEEN SUBJECTED TO ABUSE, MISUSE, IMPROPER INSTALLATION, MAINTENANCE, OR OPERATION, ELECTRICAL FAILURE OR ABNORMAL CONDITIONS, AND TO PRODUCTS WHICH HAVE BEEN TAMPERED WITH, ALTERED, MODIFIED, REPAIRED, REWORKED BY ANYONE NOT APPROVED BY SELLER, OR USED IN ANY MANNER INCONSISTENT WITH THE PROVISIONS OF THE CAUTIONARY STATEMENT ABOVE OR ANY INSTRUCTIONS OR SPECIFICATIONS PROVIDED WITH OR FOR THE PRODUCT.

09/17/18 REV

Distributed by:



## Kuriyama of America, Inc.

Headquarters, Sales Office and Warehouse Location

360 E. State Parkway, Schaumburg, IL 60173-5335

Phone: (847) 755-0360 • Toll-free FAX: (800) 800-0320

International FAX: (847) 885-0996

Web Site: <http://www.kuriyama.com>

E-Mail: [sales@kuriyama.com](mailto:sales@kuriyama.com)



Visit us  
[www.kuriyama.com](http://www.kuriyama.com)  
on the Web!

The trademarks contained in this publication are trademarks of Kuriyama of America, Inc.

## CONTACT OUR SALES/WAREHOUSE LOCATIONS BELOW WHICH SERVE YOUR AREA

### SOUTHWEST WAREHOUSE KURIYAMA OF AMERICA, INC. HOUSTON

200 PORTWALL STREET, SUITE 100  
HOUSTON, TX 77029

Phone: (713) 674-8212

Toll Free Phone: (800) 501-6808

FAX: (713) 674-5214

Toll Free FAX: (800) 800-5214

### WESTERN WAREHOUSE KURIYAMA OF AMERICA, INC. SANTA FE SPRINGS

10749 SHOEMAKER AVENUE  
SANTA FE SPRINGS, CA 90670-4039

Phone: (562) 941-4507

FAX: (562) 941-8940

Toll-Free FAX: (800) 326-8940

### SOUTHEAST WAREHOUSE FORTNEY SALES CO., INC.

4221 CANTRELL ROAD NW  
ACWORTH, GA 30101

PHONE: (770) 427-6528

FAX: (770) 423-9249

Toll Free FAX: (800) 423-9249

Web Site: [www.fortneysales.com](http://www.fortneysales.com)

E-Mail: [sales@fortneysales.com](mailto:sales@fortneysales.com)

### EASTERN WAREHOUSE EASTERN RUBBER & PLASTICS CO., INC.

100 GOLDMAN DR.  
PLUMSTED INDUSTRIAL PARK

CREAM RIDGE, NJ 08514

Phone: (609) 758-0100

FAX: (609) 758-0102

Toll Free FAX: (800) 445-7138

Web Site: [www.easternrubber.com](http://www.easternrubber.com)

E-Mail: [sales@easternrubber.com](mailto:sales@easternrubber.com)

## IN MEXICO:

KURIYAMA DE MÉXICO S DE RL DE CV  
AV JOSE PALOMO MARTINEZ NO 520-20  
BODEGA 5

PARQUE INDUSTRIAL OMOLAP

APODACA, N.L. CP:66633, MÉXICO

Phone: (81) 1086-1870 O 71

Toll-Free: (within Mexico) 01-800-822-52-00

FAX: (81) 1086-1869

Internet: [www.kuriyama.com](http://www.kuriyama.com)

Correo Electronico: [ventas@kuriyama.com](mailto:ventas@kuriyama.com)



[kuriyama.com/50years](http://kuriyama.com/50years)

