

Operating Instructions

Series D9000 Spring Driven Hose Reels

Stainless Steel Medium Pressure Model Numbers:

D9200 OMS D9300 OMS
D9200 OMS-S D9300 OMS-S



Dimensions

	A	26 3/8"
	B	26 1/4"
	C	22 1/4"
	D	7 3/4"
	E	12"
	F	24 1/8"
	G	4 3/4"

SAFETY

1. Models designed for fuel are coded with the prefix "F" i.e., "FD9400 OMS." Check name plate on the reel before installing.
2. Do not use reel at higher pressures or temperatures than listed on the back of this bulletin.
3. Remove all spring tension before beginning disassembly process.
4. Reel spring motor case is permanently sealed. Any attempt to remove the spring motor may cause serious injury.

RECOMMENDED MAINTENANCE

It is recommended to disassemble, inspect and re-lube the swivel every 3 months. Disassemble, wipe off and inspect the swivel body and stem for any evidence of galling on the metal-to-metal contact (bearing) areas. If evidence of galling is found, the swivel should be replaced. If the swivel shows no evidence of galling, re-lube the swivel with anti-seize lubricant on the bearing areas of the swivel components and reassemble the components. The swivel should be pressure tested to insure the o-rings are seated properly and that there is no evidence of leaking. Attach the swivel assembly to the reel and test the hose reel assembly for leaks at the threaded connections. It is up to the customer to insure that the lubricant used is compatible with the media they are running through the hose reel assembly.

INSTALLATION:

The swivel union is packed separately in the reel carton, use teflon tape to assure a satisfactory seal. A flexible hose connection must be used between the hose reel inlet and the source of supply to prevent possible misalignment and binding. Non flexible connections will void the warranty, pressure rating of inlet hose must be equal to or more than the pressure rating of the reel. Consult Reelcraft for proper spring when installing reels above 16 ft.

LUBRICATION:

Hose reel spring and bearings are factory lubricated and require no further lubrication. All mating moving parts are to be lubricated with Perma Bond or Locktite anti-seize compound.

REPLACING HOSE:

1. Wind spool flange clockwise-facing swivel-until spring is tight.
2. Back off three turns and latch.
3. Insert hose through roller guide.
4. Connect hose fitting to female outlet ell.

ADJUSTMENTS:

To adjust spring tension, add or remove wraps of hose from the spool, one wrap at a time until desired tension is obtained.

REPAIRS:

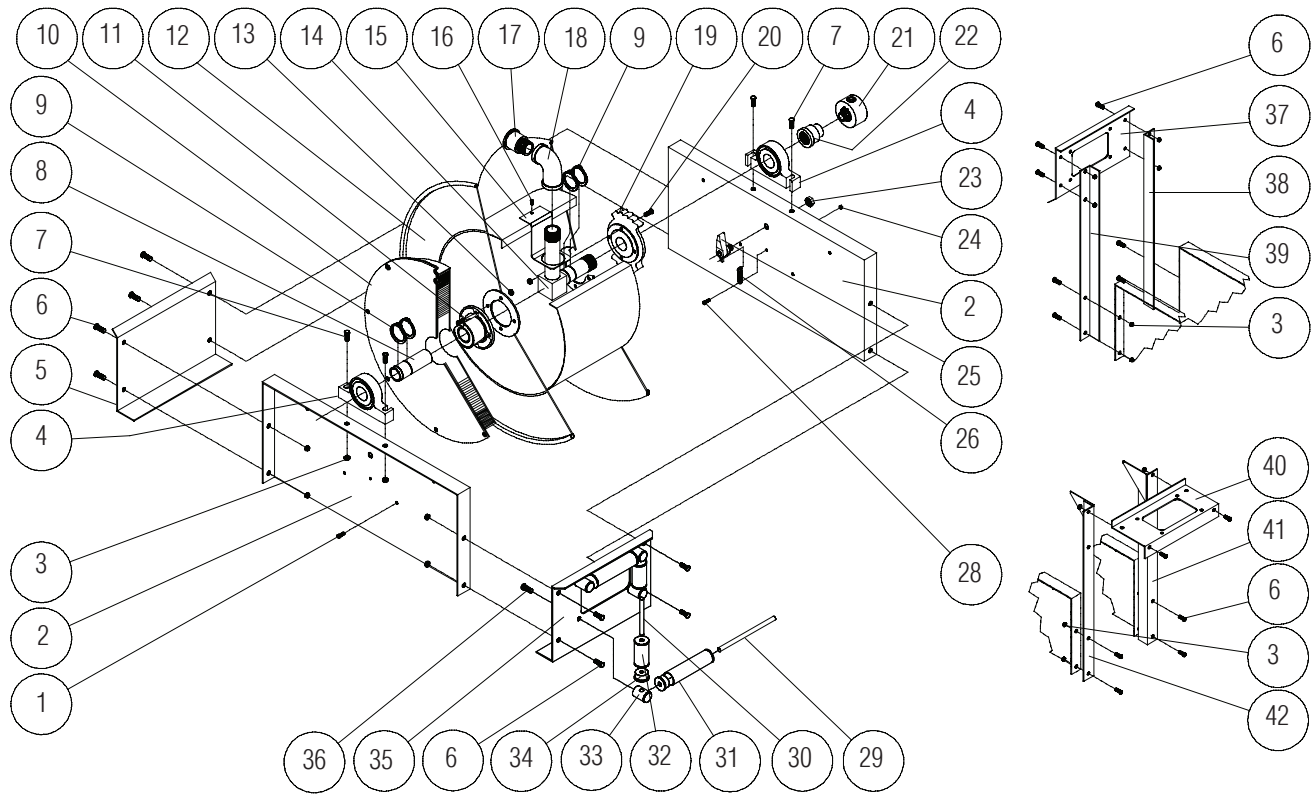
Extensive repairs should be performed only by an authorized serviceman or factory to avoid damage which may void your warranty. Remove all spring tension before beginning disassembly process.

MODIFICATION:

Hose latching mechanism can be removed for constant tension applications.

Form# 525-787 Rev: 8/2019

Series D9000 Spring Driven Hose Reels



Item #	Part #	# Req	Description	Item #	Part #	# Req	Description	Item #	Part #	# Req	Description
1	S45-41	4	1/4-20 x 1/2" Mach. Screw	15	260279	1	Outlet Support	31	260264	2	Guide Roller Tube - Long
2	260277	2	Side Frame	16	S48-117	1	#10 x 1/2" Drilling Screw	32	260265	2	Guide Roller Tube - Short
3	S73-6	12	3/8-16 Hex Flange Nut	17	S260225	1	Bushing	33	260267	4	Guide Roller Post
5	260278	1	End Frame Support	18	S163-16	1	90° Femail F.P.T. Ell	34	S270017	8	Guide Roller Bushing
6	S55-2	8	3/8-16 x 5/8" Mach. Screw	20	S73-4	8	1/4-20 x 5/8" Hex Screw	35	260266	1	Roller Support
7	S55-8	4	3/8-16 x 1 3/4" Screw	23	S74-108	1	1/2-20 Hex Jam Flange Nut	36	S347-50	4	5/16-18 x 1/2" Hex Screw
8	260273	1	Support Shaft	24	S95-22	1	10-32 x 3/8" Nyloc Nut	37	260363	1	Guide Roller Plate SW
9	S147-31	6	Snap Ring	25	S600069-1	1	Latch Pawl Assembly	38	260346	1	SW Support RH
10	S600071	1	Spring & Case Ass'y	26	S260067	1	Latch Spring	39	260346	1	SW Support LH
12	600072	1	Sheave Assembly	28	S392-2	1	10-32 Shoulder Screw	40	260363	1	Guide Roller Plate TW
13	S45-50	4	5/16-18 Hex Cap Screw	29	260268	2	Guide Roller Pin - Long	41	262193	1	Riser Assembly TW
14	261047	1	1" Inlet Shaft	30	260269	2	Guide Roller Pin - Short	42	263194	1	Riser Assembly TW

Item #	Description	# Req	D9200 OMS	D9300 OMS	D9200 OMS-S	D9300 OMS-S
4	Pillow Block Assembly	2	S270058	S270058	600665	600665
11	Spring Arbor	1	S270002	S270002	260364	260364
19	Latch Ratchet	1	S270001	S270001	261049	261049
21	Swivel Assembly	1	S600092-2	S600091-2	S600092-2	S600091-2
22	Coupling Reducer	1	S292-5	S292-6	S292-5	S292-6
25	Latch Pawl Assembly	1	S600069-1	S600069-1	S600069	S600069
--	Working pressure	--	3000 PSI	3000 PSI	3000 PSI	3000 PSI
--	Max. temperature	--	210° F	210° F	210° F	210° F